



Low Embodied Carbon
Carbon Neutral

M | Backlit 9" x 36" PRODUCT SPECIFICATIONS



COLLECTION	Material Paradox
STYLE NUMBER	10468
PRODUCT TYPE	Plank
CONSTRUCTION	Multi-Level Pattern Loop
FIBER TYPE	EcoSolution Q100™ Nylon
DYE METHOD	100% Solution Dyed
PRIMARY BACKING	Non-Woven Synthetic
SECONDARY BACKING	EcoWorx® Tile
TRAFFIC RATING	Severe
PROTECTIVE TREATMENTS	SSP® Shaw Soil Protection
GSA APPROVED PRODUCT	Yes

PRODUCT SIZE
AREA PER BOX
PIECES PER BOX
GAUGE
STITCHES
FINISHED PILE THICKNESS
AVERAGE DENSITY
TOTAL THICKNESS
TUFTED YARN WEIGHT

US Units
9 inches x 36 inches
45 ft ²
20
1/12 inches
10 per inches
0.141 inches
6128 oz/yd ³
0.286 inches
24 oz/yd ²

Metric Units
22.86 cm x 91.44 cm
4.18 m ²
47.24 per 10 cm
39.37 per 10 cm
3.58 mm
0.23 g/cm ³
7.26 mm
813.74 g/m ²

Performance Testing

PILL TEST	Pass
RADIANT PANEL	Class I
NBS SMOKE	Less than 450
ELECTROSTATIC PROPENSITY	Less than 3.5 kv
CRI GREENLABEL PLUS	GLP9968
ADA COMPLIANCE	>0.6, meets the recommended static coefficient of friction for ADA walking surfaces and accessible routes

Test Reports may be included or listed by the manufacturing/inventory style number as opposed to the noted selling style number.

Warranty

Lifetime Commercial Limited

Please visit patcraft.com for the most current warranty information.



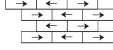
Low Embodied Carbon
+ Carbon Neutral

M | Backlit 9" x 36"

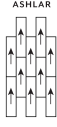
Installation Methods



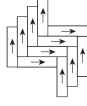
Monolithic



Brick



Ashlar



Herringbone



Stagger

[Installation Guidelines](#)

[Maintenance Guidelines](#)

Environmental Specifications

RECYCLABILITY	100% recyclable
EMBODIED CARBON (CRADLE TO GATE)	4.98 Kg CO ₂ /M ²
LIFE-CYCLE CARBON EMISSIONS	Carbon Neutral

This product is carbon neutral through the purchase of verified offsets, and is manufactured in a carbon neutral facility.

Materials

Ingredients

DOES NOT CONTAIN does not contain PVC, phthalates or PBD/PBDE

Recycled Content

TOTAL RECYCLED CONTENT (BY WEIGHT)	61%
PRE-CONSUMER	61%
POST-CONSUMER	0%
COUNTRY OF ORIGIN (MANUFACTURER)	US

Meets or exceeds all local and national regulations in country of manufacture. Manufactured in an ISO9001 & ISO14001 certified facility or equivalent. Recycled content is calculated using system allocation, mass balance, and direct insertion. The actual recycled content in this product will likely vary. For more information email info@patcraft.com.

Third Party Certifications

CRADLE TO CRADLE CERTIFIED®	Silver Level (Version 4.0)
HEALTH PRODUCT DECLARATION (HPD)	1,000 ppm Disclosure
ENVIRONMENTAL PRODUCT DECLARATION (EPD)	3rd Party Certified in Accordance with ISO14044, ISO14025 & EN15804
DECLARE	LBC Compliant
NSF 140	Gold
CRI GREEN LABEL PLUS (GLP)	GLP9968
ENVIRONMENTAL GUARANTEE	Free transport and recycling within the United States and Canada.
PRODUCT PACKAGING	100% Recyclable
USGBC LEED	contributes
BUILDING RESEARCH ESTABLISHMENT	certified
GOOD ENVIRONMENTAL CHOICE AUSTRALIA	certified



Low Embodied Carbon
+ Carbon Neutral

patcraft®

M | Backlit 9" x 36"



Specifications are subject to nominal manufacturing variances. Material supply and/or manufacturing processes may necessitate specification changes without notice. This carpet is an exclusive design and may not be duplicated in any manner. Use of this design in the creation of another carpet design is also strictly prohibited. Visit patcraft.com/testing for more information.

PATCRAFT.COM / @PATCRAFTFLOORS / 800.241.4014
© 2023 Shaw Industries Group, Inc., a Berkshire Hathaway Company

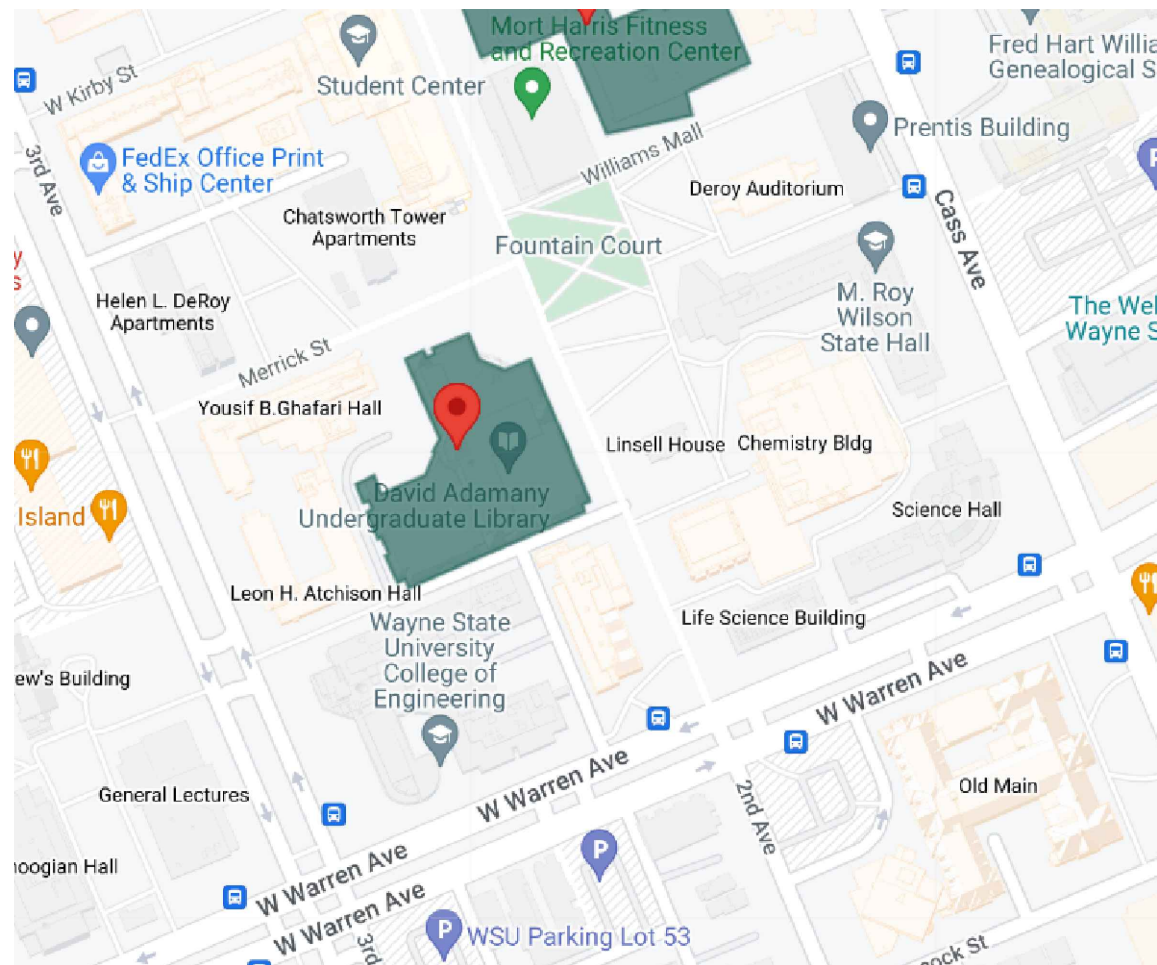
TRANSFORMSPACE

For reference purposes only if printed or downloaded.

WAYNE STATE UNIVERSITY

UGL BUILDING HONORS COLLEGE CARPET REPLACEMENT

WSU PROJECT REQUEST: 096-403107



DRAWING INDEX	
G. 1	TITLE SHEET
A. 1	FLOORING PLAN- THIRD FLOOR



DRAWING TITLE
UGL HONORS COLLEGE
CARPET FLOORING REPLACEMENT

GENERAL NOTES
DISCLAIMER: WAYNE STATE UNIVERSITY, FACILITIES PLANNING AND MANAGEMENT MAKES THESE DOCUMENTS AVAILABLE ON AN "AS IS" BASIS. THESE DOCUMENTS WERE CREATED USING AUTOCAD FROM AUTODESK AND ARE ACCURATE FOR SPACE MANAGEMENT, "FLOOR PLAN" USE. THE USERS WILL HOLD HARMLESS WSU, ITS OFFICERS, AGENTS, AND EMPLOYEES FROM DAMAGES OR COST, INCLUDING REASONABLE ATTORNEY'S FEES, ARISING FROM THE USE OF THESE DRAWINGS. DO NOT TREAT THESE DOCUMENTS AS ACCURATE, IT IS EXPECTED THAT CONTRACTORS WILL CONDUCT FIELD VISITS FOR OBSERVATION AND MEASUREMENTS.

NO.	REVISION/ISSUE	DATE
1	FOR BIDDING	4/9/2024

FIRM NAME AND ADDRESS
WAYNE STATE UNIVERSITY
FACILITIES PLANNING AND MANAGEMENT
DESIGN & CONSTRUCTION SERVICES
5454 CASS AVENUE
DETROIT, MI 48202

PROJECT NAME AND ADDRESS
UGL HONORS COLLEGE FLOORING
5155 GULLEN MALL,
DETROIT, MI 48202

PROJECT NUMBER	SHEET
096-403107	G1
DATE 04/9/2024	



DRAWING TITLE
 UGL HONORS COLLEGE
 CARPET FLOORING REPLACEMENT

Legend

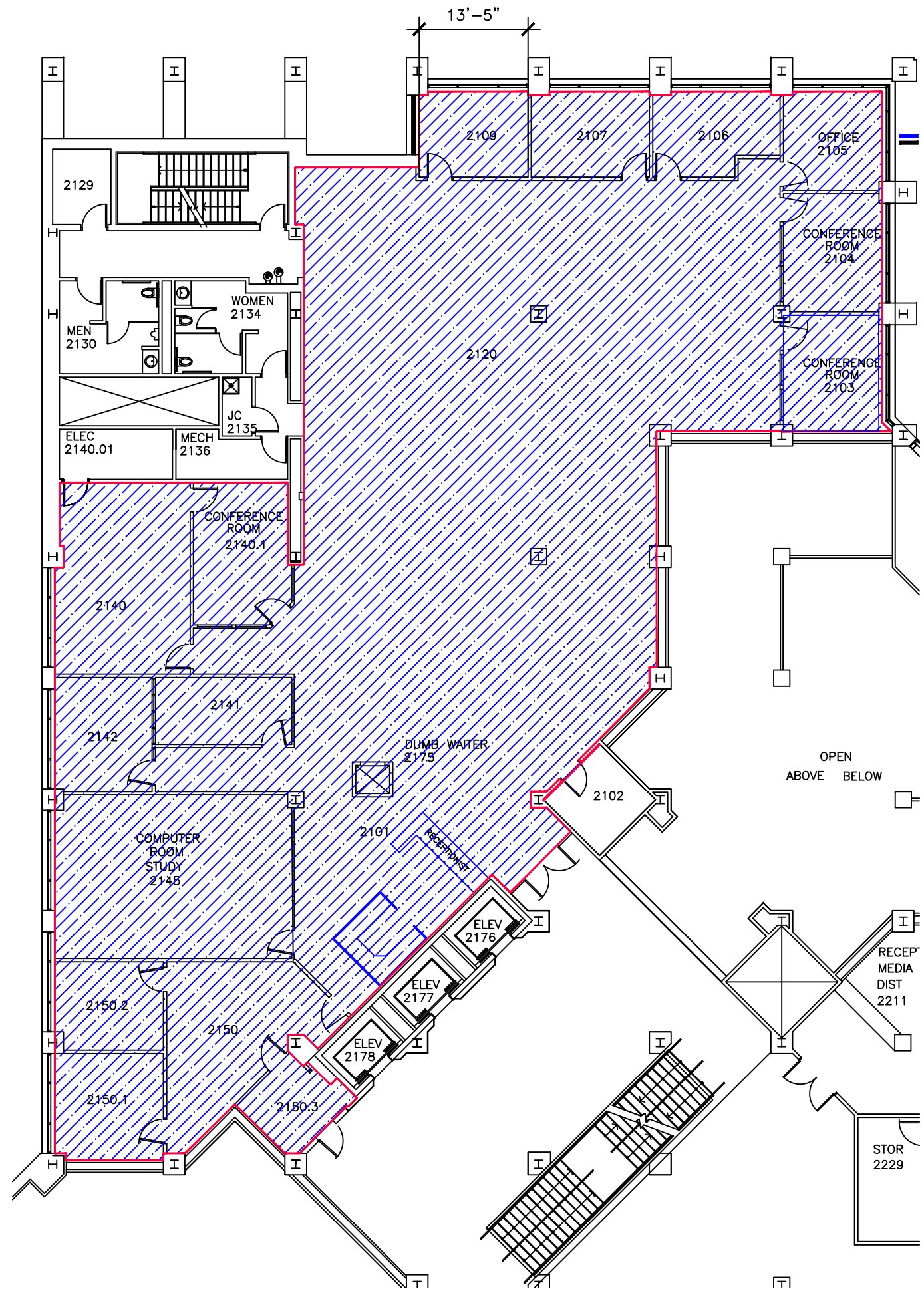
- Remove and replace with New Carpet
- Patcraft - Backlit (9"x36") 10468 Color Uplight
- Wall Base- Roppe 4" 100 Black cove base

GENERAL NOTES

1. ALL DIMENSIONS SHOWN ARE FOR REFERENCE ONLY. CONTRACTOR IS RESPONSIBLE TO VERIFY ALL MEASUREMENTS IN FIELD.
2. WORK WILL BE CONDUCTED IN AN OCCUPIED BUILDING/REGULAR HOURS. NOISY WORK TO BE PLANNED FOR MINIMAL IMPACT. CONTACT WITH THE OCCUPANTS SHOULD BE MINIMAL.
3. WSU DOES NOT PROVIDE PARKING. COST OF PARKING IS CONTRACTORS RESPONSIBILITY.
4. ANY ADDITIONAL WORK REQUESTED. MUST BE APPROVED BY WSU PROJECT MANAGER IN WRITING.
5. CONTRACTOR IS RESPONSIBLE FOR CLEANUP.
6. INSTALL TRANSITION STRIP OR REDUCER BETWEEN NEWLY INSTALLED FLOORING AND ADJOINING FLOORING AS REQUIRED PER SITE CONDITIONS.
7. FINAL FINISH FLOORING HEIGHT TO MATCH ADJOINING FLOORING.
8. PRE DEMO WALK THROUGH IS REQUIRED.
9. BUILDING IS OCCUPIED DURING CONSTRUCTION, WORK TO BE SCHEDULED AROUND CLASSES.
10. THE CONTRACTOR SHALL BE RESPONSIBLE FOR BARRICADES/ENCLOSURES AS REQUIRED TO ASSURE PUBLIC, CONTRACTOR, EMPLOYEE, AND WORKER PROTECTION AT AREAS OF CONSTRUCTION.
11. ANY ADDITIONAL WORK REQUESTED. MUST BE APPROVED BY WSU PROJECT MANAGER IN WRITING.
12. CONTRACTOR IS RESPONSIBLE FOR CLEANUP. WORK AREA MUST BE LEFT IN CLEAN CONDITION AS IT WAS PRIOR TO START OF WORK.
13. CONTRACTOR WILL BE RESPONSIBLE FOR ANY PAINTING DAMAGE DURING SITE WORK. WALLS TO BE TO BE PROTECTED AND WHILE DEMOLITION OF WALL BASE.
14. RECYCLE THE OLD CARPET FOR SUSTAINABILITY.

FLOOR PLAN

SCALE: 1/16" = 1'-0"



GENERAL NOTES
 DISCLAIMER: WAYNE STATE UNIVERSITY, FACILITIES PLANNING AND MANAGEMENT MAKES THESE DOCUMENTS AVAILABLE ON AN "AS IS" BASIS. THESE DOCUMENTS WERE CREATED USING AUTOCAD FROM AUTODESK ADN ARE ACCURATE FOR SPACE MANAGEMENT, "FLOOR PLAN" USE. THE USERS WILL HOLD HARMLESS WSU, ITS OFFICERS, AGENTS, AND EMPLOYEES FROM DAMAGES OR COST, INCLUDING REASONABLE ATTORNEY'S FEES, ARISING FROM THE USE OF THESE DRAWINGS. DO NOT TREAT THESE DOCUMENTS AS ACCURATE, IT IS EXPECTED THAT CONTRACTORS WILL CONDUCT FIELD VISITS FOR OBSERVATION AND MEASUREMENTS.

--	--	--

NO.	REVISION/ISSUE	DATE
1	FOR BIDDING	4/9/2024

FIRM NAME AND ADDRESS
 WAYNE STATE UNIVERSITY
 FACILITIES PLANNING AND MANAGEMENT
 DESIGN & CONSTRUCTION SERVICES
 5454 CASS AVENUE
 DETROIT, MI 48202

PROJECT NAME AND ADDRESS
 UGL HONORS COLLEGE FLOORING
 5155 GULLEN MALL,
 DETROIT, MI 48202

PROJECT NUMBER 096-403107	SHEET A1
DATE 04/9/2024	