



Computing & Network Services  
5925 Woodward – Detroit, MI 48202  
Tel. 313- 577-1955 Fax 313-577-5577

**Request for Price Quote & Statement of Work**

Date 05-29-2013  
SOW # 290  
TSR # T.B.D.  
Order # T.B.D.

Project name: Skillman Building Rewire Project  
Building number/name 510 - Skillman Building  
Building address: 100 E Palmer  
Number of floors/involved : 3 MDF Basement 008 Prints Supplied yes  
Form submitted by: Pete Garabedian Work to be Completed By:  
Walk through date/time: Date Quote Response due back to WSU:  
Note: Please return all floor plans with your Bid Response/Proposal:

**Bidder information**

Company name:  
Address:  
City: State: MI Zip:  
Person submitting Quote: Position:  
Tel # Fax # e-mail  
Walk-thru Attendees:

**Description of Work Requested by WSU**

All work shall conform to Wayne State University Standards for Communications Infrastructure and Specifications dated October 31, 2012 which can be reviewed & downloaded at:  
<http://www.computing.wayne.edu/docs/ws-u-communications-standards.pdf>

**Details & clarifications will be discussed at the mandatory prebid meeting**

**Bid requirements:**

- 1) Pricing detail must be filled out completely, or this price quote will not be accepted.
- 2) RCDD person on full time payroll to manage the on onsite installation of this project
- 3) All pre bid, bid & bid award processes will include at least 1 person from WSU's /C&IT's IT Customer Services Group, Merrill Palmer Institute & WSU project manager.

**Description**

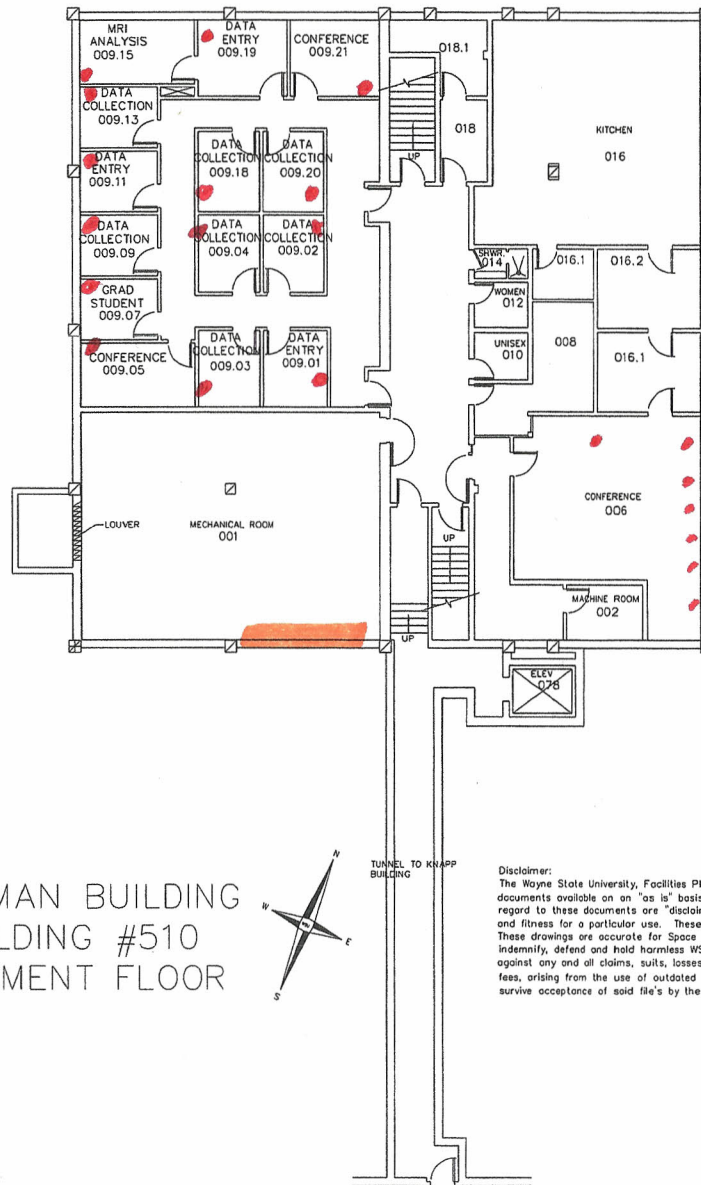
WSU needs to replace the old CAT 3 & CAT 5 voice/data cabling at Skillman Building # 510. This amounts to installing 60 dual voice/data jacks at locations shown on the spread sheet & prints circled in red. In addition to this, the installation contractor will move and cross connect the voice lines from the old jack to the new jack in the MDF and IDFs to the new horizontal cable. This will require a coordinated cutover with the WSU project manager. This will include a minimum of one IT person from Merrill Palmer Institute, C&IT network engineering & telecomm. departments. WSU Electronic Technicians will connect the data patch panel ports to the network switches. All of the old voice and data cabling must be removed from the jack back to the communication room after the voice & data cutover is completed.

**Horizontal Cabling**

In the basement install 1 dual voice/data jacks per office or lab room at locations listed in the Skillman\_Location\_Spreadsheet.xlsx provided. Jack locations shown on the print. This amounts to a total of 35) dual voice/data jacks. Voice & data terminates on seperate patch panels in the communication rack. All voice/data connections terminate in communication room 008.

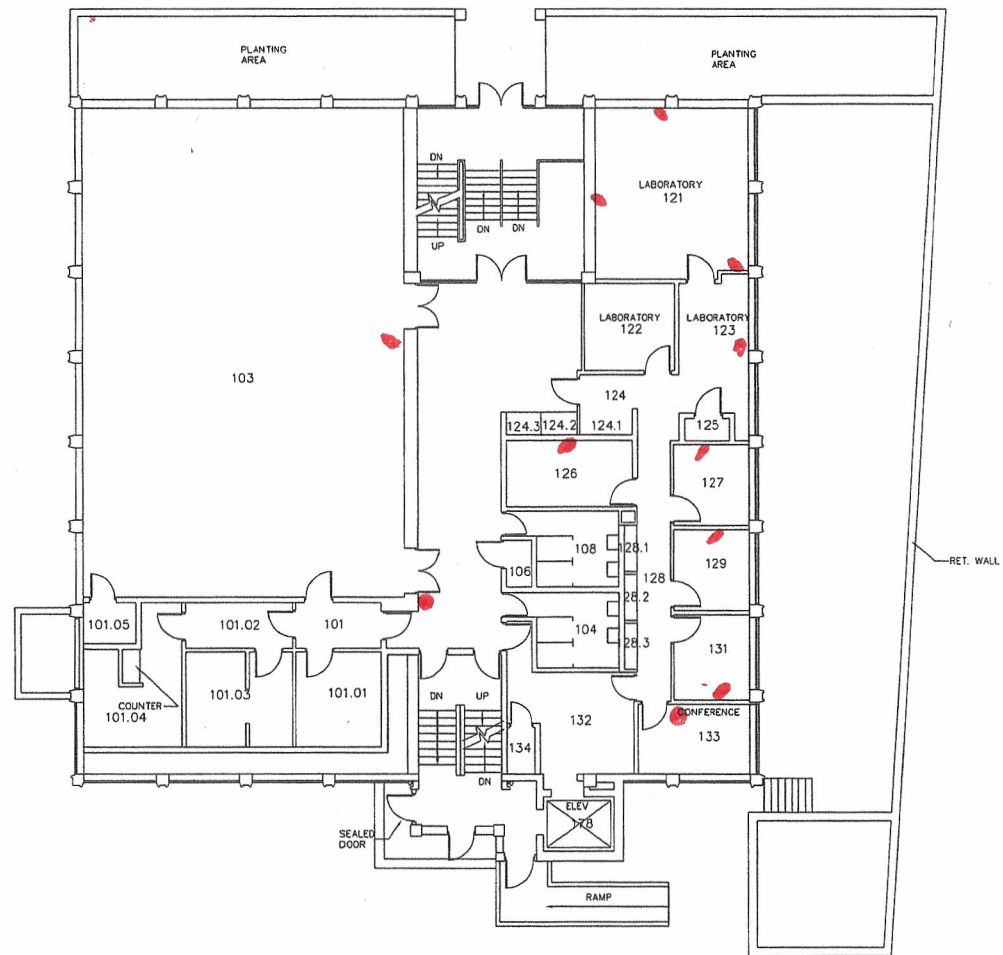
On the 1st Floor install 1 dual voice/data jacks per office or lab room at locations listed in the Skillman\_Location\_Spreadsheet.xlsx provided. Jack locations shown on the print. This amounts to a total of 11 dual voice/data jacks. Voice & data terminates on seperate patch panels in the communication rack. All 1st floor connections terminate in the basement MDF communication room 008. Add 2) 1 voice / 1 data jacks per floor, could be anywhere in the room. These are the rooms we didn't have access to during our audit process of the building. Total voice / data jacks = 13

On the 2nd Floor install 1 dual voice/data jacks per office or lab room at locations listed in the Skillman\_Location\_Spreadsheet.xlsx provided. Jack locations shown on the print. This amounts to a total of 3 dual voice/data jacks. Voice & data terminates on seperate patch panels in the communication rack. All 2nd floor connections terminate in the basement MDF communication room 008. Add 9) 1 voice / 1 data jacks per floor, could be anywhere in the room. These are the rooms we didn't have access to during our audit process of the building. Total voice / data jacks = 12



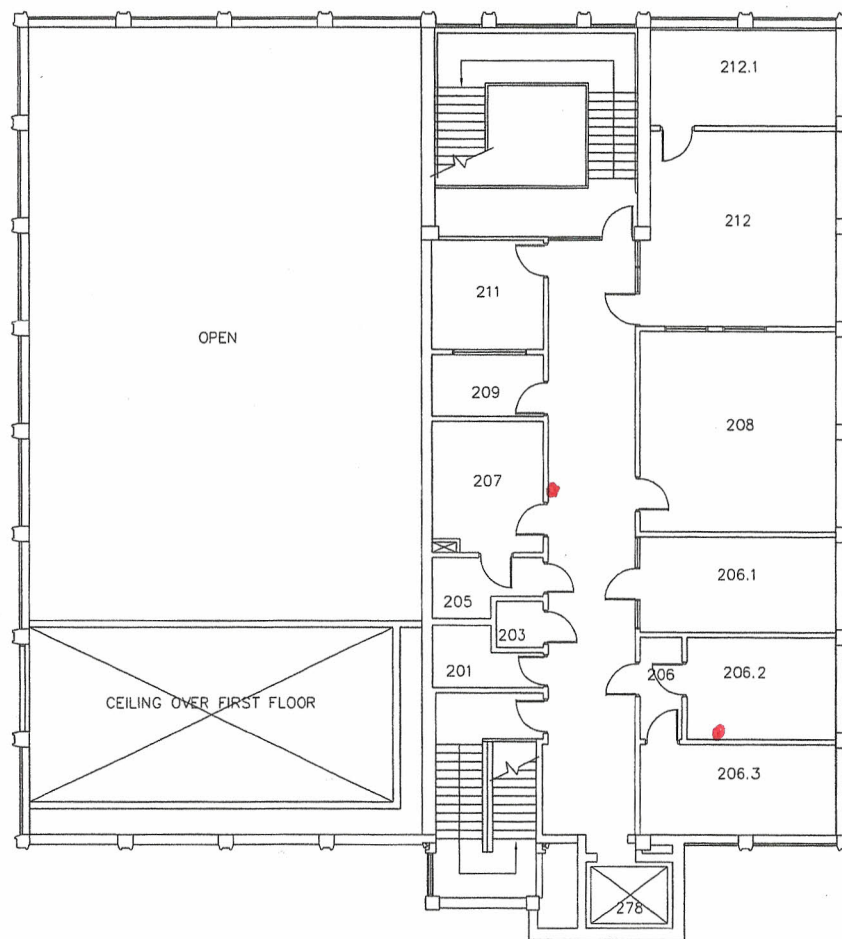
# SKILLMAN BUILDING BUILDING #510 BASEMENT FLOOR

**Disclaimer:**  
The Wayne State University, Facilities Planning and Management (WSU-FPM) makes these documents available on an "as is" basis. All warranties and representations of any kind with regard to these documents are "disclaimed", including the implied warranties of merchant ability and fitness for a particular use. These Drawings were created using AutoCAD from AutoDesk. These drawings are accurate for Space Management, "Floor Plan" use. The Receiver agrees to indemnify, defend and hold harmless WSU, its officers, agents, and employees from and against any and all claims, suits, losses, damages or cost, including reasonable attorney's fees, arising from the use of outdated design file drawings, and such indemnification shall survive acceptance of said file's by the receiver.

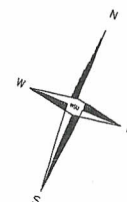


SKILLMAN BUILDING  
BUILDING #510  
FIRST FLOOR





SKILLMAN BUILDING  
BUILDING #510  
SECOND FLOOR



# Wayne State University Substandard Communication Cabling Building Audit Spreadsheet

Room Number	Voice			Data			Notes/Comments
	CAT3	CAT 5	CAT6	CAT 3	CAT 5	CAT6	
1	0	0	0	0	0	1	No Access
2	-	-	-	-	-	-	
6	0	0	0	0	0	7	
6.1	0	0	0	0	0	6	
8	0	0	0	0	0	0	
9	0	0	0	0	0	0	
9.1	0	0	1	0	0	3	
9.2	0	0	1	0	0	3	
9.3	0	0	1	0	0	3	
9.4	0	0	1	0	0	3	
9.5	0	0	1	0	0	3	
9.7	0	0	1	0	0	3	
9.9	0	0	1	0	0	3	
9.11	0	0	1	0	0	3	
9.13	0	0	1	0	0	3	
9.15	0	0	1	0	0	3	
9.17	0	0	0	0	0	0	
9.18	0	0	1	0	0	1	
9.19	0	0	1	0	0	1	
9.2	0	0	1	0	0	1	
9.21	0	0	1	0	0	1	
14	0	0	0	0	0	0	
18	0	0	0	0	0	0	
Totals	0	0	14	0	0	48	

# Wayne State University Substandard Communication Cabling Building Audit Spreadsheet

Room Number	Voice			Data			Notes/Comments
	CAT3	CAT 5	CAT6	CAT 3	CAT 5	CAT6	
Lobby	1	0	0	0	0	0	Lobby
102	0	0	0	0	0	0	
105	1	0	0	0	0	0	
105.1	0	0	0	0	0	0	
106	-	-	-	-	-	-	No Access
121	0	0	3	0	0	3	
122	-	-	-	-	-	-	No Access
123	0	0	1	0	0	1	
124	0	0	0	0	0	0	
124.1	0	0	0	0	0	0	
125	0	0	0	0	0	0	
126	0	0	1	0	0	1	
127	0	0	1	0	0	1	
129	0	0	1	0	0	1	
131	0	0	1	0	0	1	
132	0	0	0	0	0	0	
133	0	0	1	0	0	1	
Totals	2	0	9	0	0	9	

# Wayne State University Substandard Communication Cabling Building Audit Spreadsheet

Room Number	CAT3	CAT 5	CAT6	CAT 3	CAT 5	CAT6	Notes/Comments
Lobby	1	0	0	0	0	0	
201	0	0	0	0	0	0	
203	0	0	0	0	0	0	
205	0	0	0	0	0	0	
206	0	0	0	0	0	0	No Access
206.1	-	-	-	-	-	-	No Access
206.2	1	0	0	1	0	0	
206.3	-	-	-	-	-	-	No Access
207	-	-	-	-	-	-	No Access
208	-	-	-	-	-	-	No Access
209	-	-	-	-	-	-	No Access
211	-	-	-	-	-	-	No Access
212	-	-	-	-	-	-	No Access
212.1	-	-	-	-	-	-	No Access
Totals	2	0	0	1	0	0	