



# WAYNE STATE UNIVERSITY

Facilities Planning & Management - Design & Construction Services

## CSC TELECOM ELECTRICAL UPGRADE

VOIP - Phase 2A Includes : 048 Cohn, 026 Purdy Library, 027 Kresge Library, 034 Student Center, 155 Alex Manoogian, 001 Old Main

WSU PROJECT NO. 193 - 2 4 8 4 5 2  
B I D S September 30, 2015

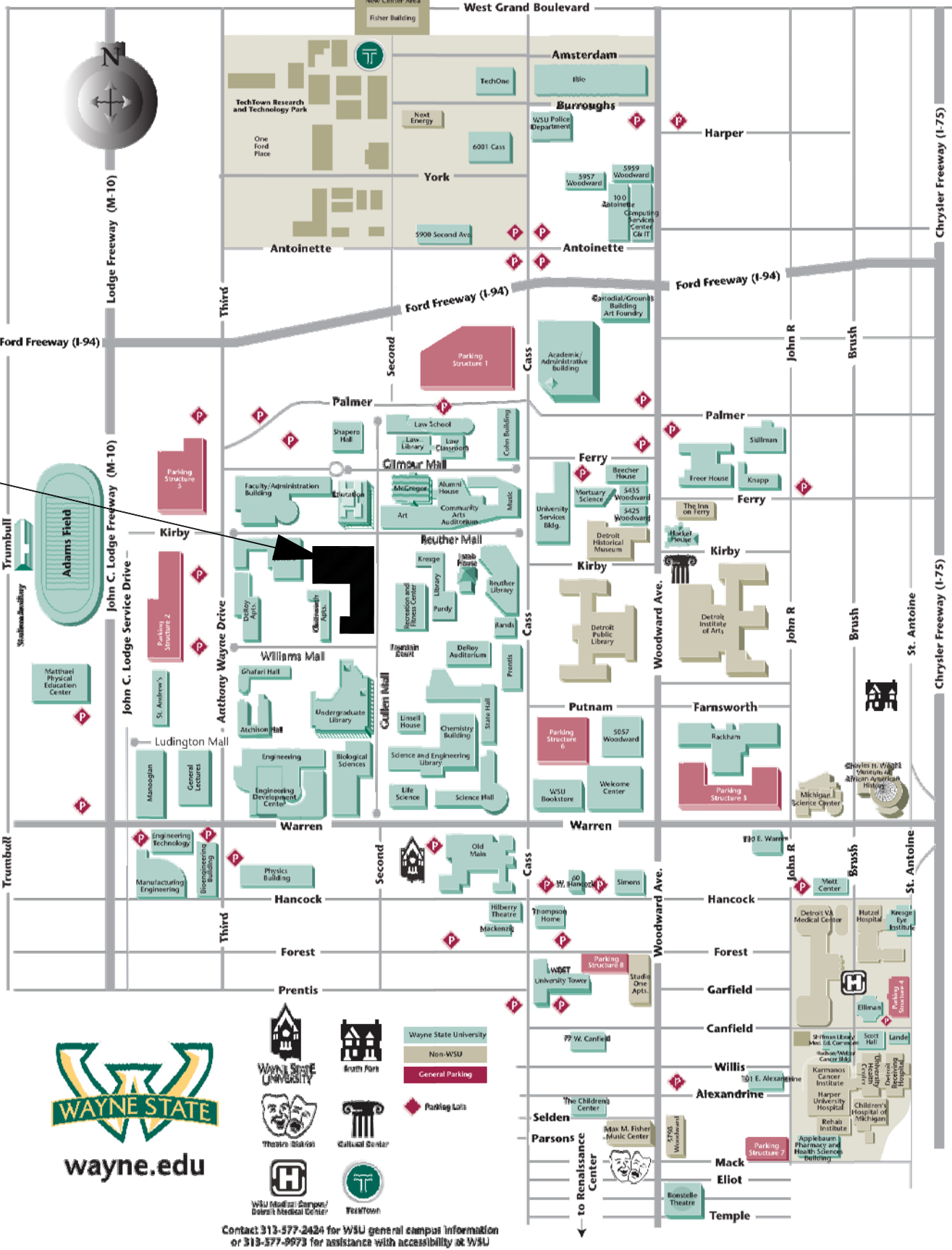
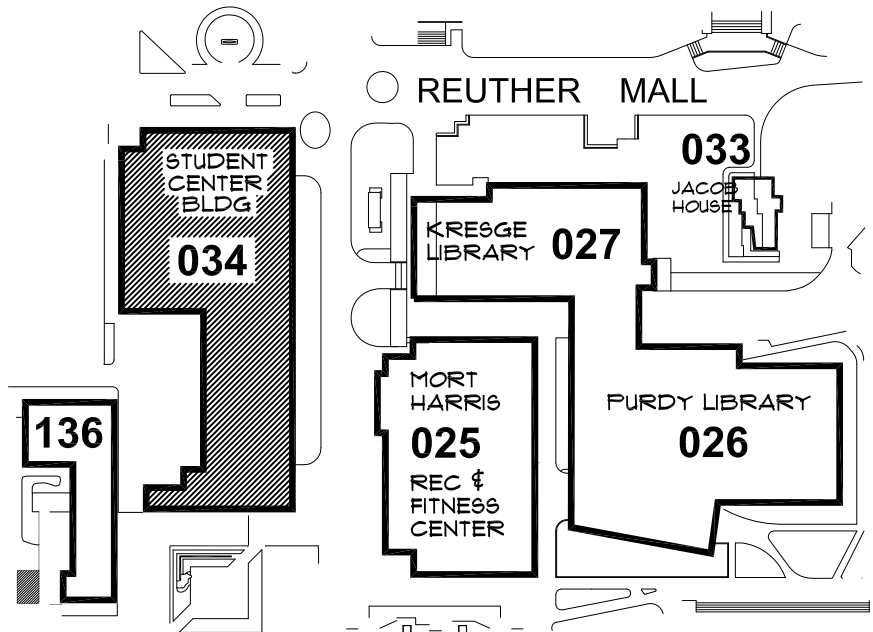
034 - Student Center Building  
5221 Gullen Mall  
Detroit, Michigan 48202

GPS : 42.358134, - 83.070899

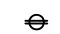
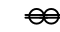

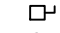
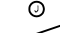


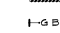

### INDEX OF DRAWINGS

SHEET #	DESCRIPTION
CVR	PROJECT COVER SHEET
E-0	ELECTRICAL STANDARDS AND NOTES
E-1	BASEMENT FLOOR POWER PLAN
E-2	FIRST FLOOR POWER PLAN
E-3	SECOND FLOOR POWER PLAN
E-4	THIRD FLOOR POWER PLAN
E-5	FOURTH FLOOR POWER PLAN
E-6	FIFTH FLOOR POWER PLAN
E-7	SIXTH FLOOR POWER PLAN
E-8	SEVENTH FLOOR POWER PLAN

Project Location : Student Center Building



ELECTRICAL SYMBOL LIST

	DUPLEX RECEPTACLE
	QUAD RECEPTACLE
	SPECIAL RECEPTACLE AS NOTED
	NON-FUSIBLE DISCONNECT SWITCH
	JUNCTION BOX
	BRANCH CIRCUIT PANELBOARD
	TRANSFORMER
	DISTRIBUTION PANEL
	GROUND BUS

ELECTRICAL ABBREVIATIONS LIST

A	AMPERES	NEC	NATIONAL ELECTRICAL CODE
A.F.F.	ABOVE FINISH FLOOR	NF	NON - FUSIBLE
C	CONDUIT	NTS	NOT TO SCALE
CB	CIRCUIT BREAKER	OC	ON CENTER
CKT	CIRCUIT	P	POLE
DISC	DISCONNECT	PH	PHASE
DP	DISTRIBUTION PANEL	PL	PLASTER
EC	ELECTRICAL CONTRACTOR	RECEPT.	RECEPTACLE
ELEC	ELECTRICAL	RP	RECEPTACLE PANEL
EMT	ELECTRICAL METALLIC TUBING	SCHED	SCHEDULE
FU	FUSE	SW	SWITCH
G / GRD	GROUND	TB	TERMINAL BOX
JB	JUNCTION BOX	TELECOM	TELECOMMUNICATIONS
KV	KILOVOLT	U. O. N.	UNLESS OTHERWISE NOTED
KVA	KILOVOLT - AMPERES	V	VOLTS
LP	LIGHTING PANEL	W	WIRE
LDP	LIGHTING DISTRIBUTION PANEL	WP	WEATHERPROOF
MAX	MAXIMUM	XFMR	TRANSFORMER
MIN	MINIMUM	XP	EXPLOSION PROOF
MISC.	MISCELLANEOUS	( E )	EXISTING
N	NEUTRAL	( R )	RELOCATED

VOIP - PHASE 2 Building and Rooms

FP & M PROJECT PHASE	BUILDING NAME	ROOM NUMBER	208 VOLT SINGLE PHASE 30 AMP CIRCUIT/ L6-30R	NOTES
2 A	STUDENT CENTER BUILDING	547.1 647.1 747.1	YES YES YES	

NOTE : HEIGHT OF FINISH FLOOR TO FINISH FLOOR ABOVE :

FLOOR	ELEVATION	F FLR. TO F FLR. ABOVE
07	103' - 5"	
06	170' - 8"	14' - 9"
05	158' - 8"	12' - 0"
04	146' - 8"	12' - 0"
03	134' - 8"	12' - 0"
02	112' - 0"	22' - 8"
01	100' - 0"	12' - 0"
BSMT	86' - 0"	14' - 0"

SCOPE OF WORK

THE CONTRACTOR SHALL PROVIDE LABOR AND MATERIALS FOR THE FOLLOWING SCOPE OF WORK :

1. PROVIDE 30 AMP 208 VOLT 2-POLE SINGLE PHASE WITH GROUND, FROM EXISTING RECEPTACLE PANEL TERMINATED INTO A L6-30R NEMA RECEPTACLE IN IT CLOSET ( AS DESIGNATED IN VOIP - PHASE 2 BUILDING AND ROOM SCHEDULE ) COMPLETE WITH DISCONNECTED SWITCH IN IT CLOSET. EXACT LOCATION OF L6-30R OUTLET TO BE FIELD COORDINATED WITH C & IT. ELECTRICAL CONTRATOR TO INSTALL OWNER-FURNISHED PDU/POWER STRIP, EXACT LOCATION TO BE FIELD COORDINATED WITH C & IT.

2. THE CONTRACTOR SHALL REWORK EXISTING CIRCUITS IN RECEPTACLE PANELS TO ALLOW FOR THE INSTALLATION OF ONE ( 1 ) NEW 30A 2 POLE CIRCUIT BREAKER.

3. PROVIDE 3/4 C-4-#10 EMT IN ELECTRICAL ROOM AND THE DATA ROOM, BETWEEN THE ROOMS ABOVE THE CEILING WILL BE #10 / 4 CONDUCTOR MC CABLE AND PROPERLY SUPPORTED.

4. INSTALL A 30A 1PH 250V NON FUSED DISCONNECT LOCKABLE SWITCH IN DATA ROOM NEXT TO A 30A 1PH 250V TWISTLOCK RECEPTACLE.

5. THE CONTRACTOR SHALL PROPERLY FIRE STOP ALL PENETRATIONS RELATED TO THEIR WORK.

6. ALL WORK TO BE COMPLETED MONDAY THRU FRIDAY FROM 7:00 AM TO 3:30 PM.

7. IF RECEPTACLE PANEL "RP" IS FULL THE CONTRACTOR SHALL LOCATE AN ALTERNATE RECEPTACLE PANEL WITHIN 150'-0" OF THE DATA ROOM.

8. THE CONTRACTOR SHALL PROVIDE A LABEL WITH THE RECEPTACLE PANEL DESIGNATION AND CIRCUIT NUMBER AT THE DEVICE.

9. AT THE RECEPTACLE PANEL AND INSTALL LABELS FOR ALL CHANGES AND THE 2 POLE BREAKER FEEDING THE DATA CIRCUIT.

10. THE CONTRACTOR SHALL PROVIDE ALL NEW 2 POLE AND DA CIRCUIT BREAKERS TO MATCH EXISTING PANELBOARDS.

11. RECEPTACLE PANEL DESIGNATION ON THE DRAWINGS IS NOT NECESSARILY THE RECEPTACLE PANEL DESIGNATION IN THE FIELD. FOR LABELING USE THE RECEPTACLE PANEL DESIGNATION IN THE FIELD.

12. ALL CONDUIT TO BE ABOVE FINISHED CEILING. EXISTING CEILINGS ARE EITHER OPEN OR LAY IN OR U.O.N..

WAYNE STATE  
UNIVERSITY

REVISIONS :

WAYNE STATE UNIVERSITY - Facilities Planning & Management  
CSC TELECOM ELECTRICAL UPGRADE

Electrical Standards and Notes

SHEET :

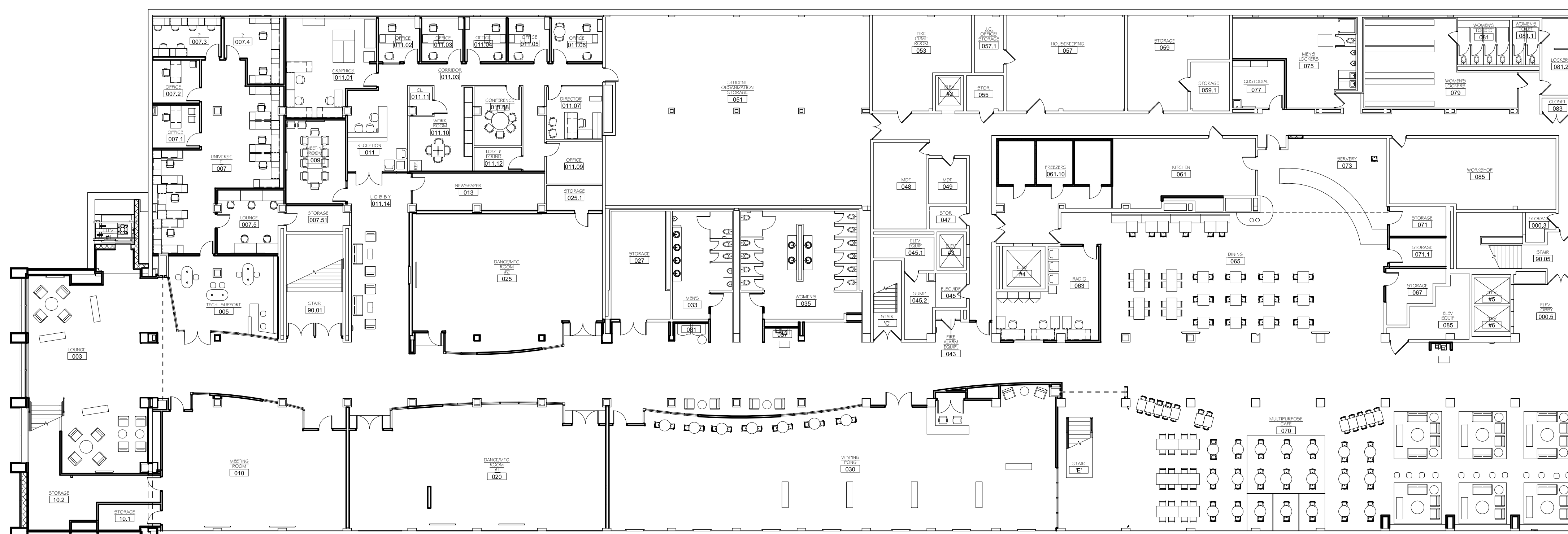
PROJECT TITLE :  
034 - Student Center Bldg  
VOIP - Phase 2A

DATE :  
Sept., 30, 2015  
ISSUE :  
BIDS

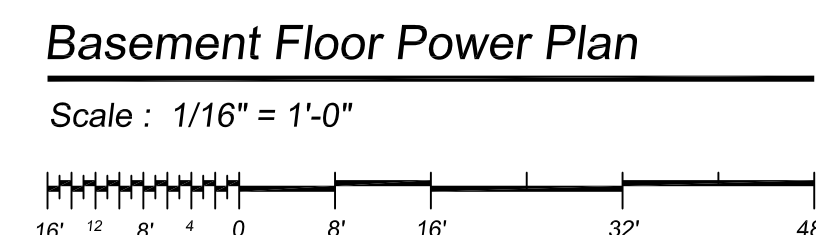
PROJECT NUMBER  
#193-248452

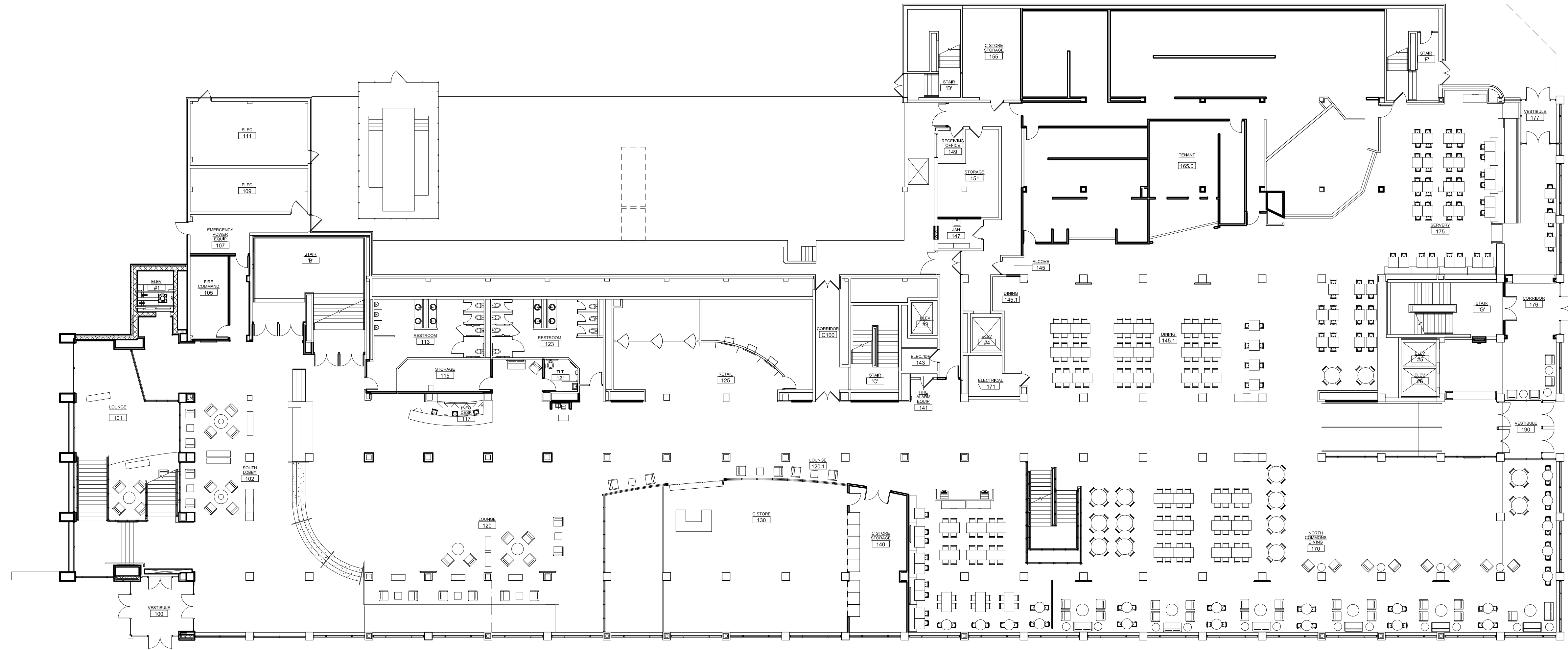
SHEET NO :

E-O

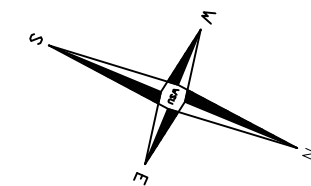


DISCLAIMER:  
WAYNE STATE UNIVERSITY, FACILITIES PLANNING AND MANAGEMENT  
MAKES THESE DOCUMENTS AVAILABLE ON AN "AS IS" BASIS.  
THESE DRAWINGS WERE CREATED USING AUTOCAD FROM AUTODESK AND  
ARE ACCURATE FOR SPACE MANAGEMENT, "FLOOR PLAN" USE. THE USERS  
WILL HOLD HARMLESS WSU, ITS OFFICERS, AGENTS, AND EMPLOYEES  
FROM DAMAGES OR COST, INCLUDING REASONABLE ATTORNEYS FEES,  
ARISING FROM THE USE OF THESE DRAWINGS.





STUDENT CENTER BUILDING  
BUILDING #034  
FIRST FLOOR PLAN

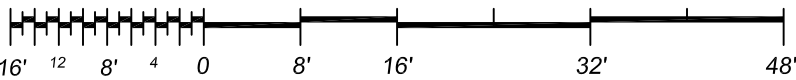


DISCLAIMER:  
WAYNE STATE UNIVERSITY, FACILITIES PLANNING AND MANAGEMENT  
MAKES THESE DOCUMENTS AVAILABLE ON AN "AS IS" BASIS.  
THESE DRAWINGS WERE CREATED USING AUTOCAD FROM AUTODESK AND  
ARE ACCURATE FOR SPACE MANAGEMENT, FLOOR PLAN USE. THE USERS  
WILL HOLD HARMLESS WSU, ITS OFFICERS, AGENTS, AND EMPLOYEES  
FROM DAMAGES OR COST, INCLUDING REASONABLE ATTORNEYS FEES,  
ARISING FROM THE USE OF THESE DRAWINGS.



First Floor Power Plan

Scale : 1/16" = 1'-0"



WAYNE STATE UNIVERSITY - Facilities Planning & Management  
CSC TELECOM ELECTRICAL UPGRADE

PROJECT TITLE :  
034 Student Center Bldg  
VOIP - Phase 2A

SHEET :  
First Floor Power Plan

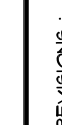
REVISIONS :

DATE :  
Sept. 30, 2015  
ISSUE :  
BIDS

PROJECT NUMBER  
#193-248452

SHEET NO.  
E-2

WAYNE STATE  
UNIVERSITY

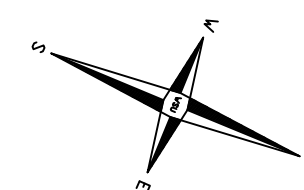


**SHEET :**

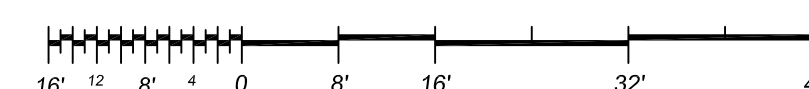
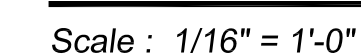
PROJECT TITLE :

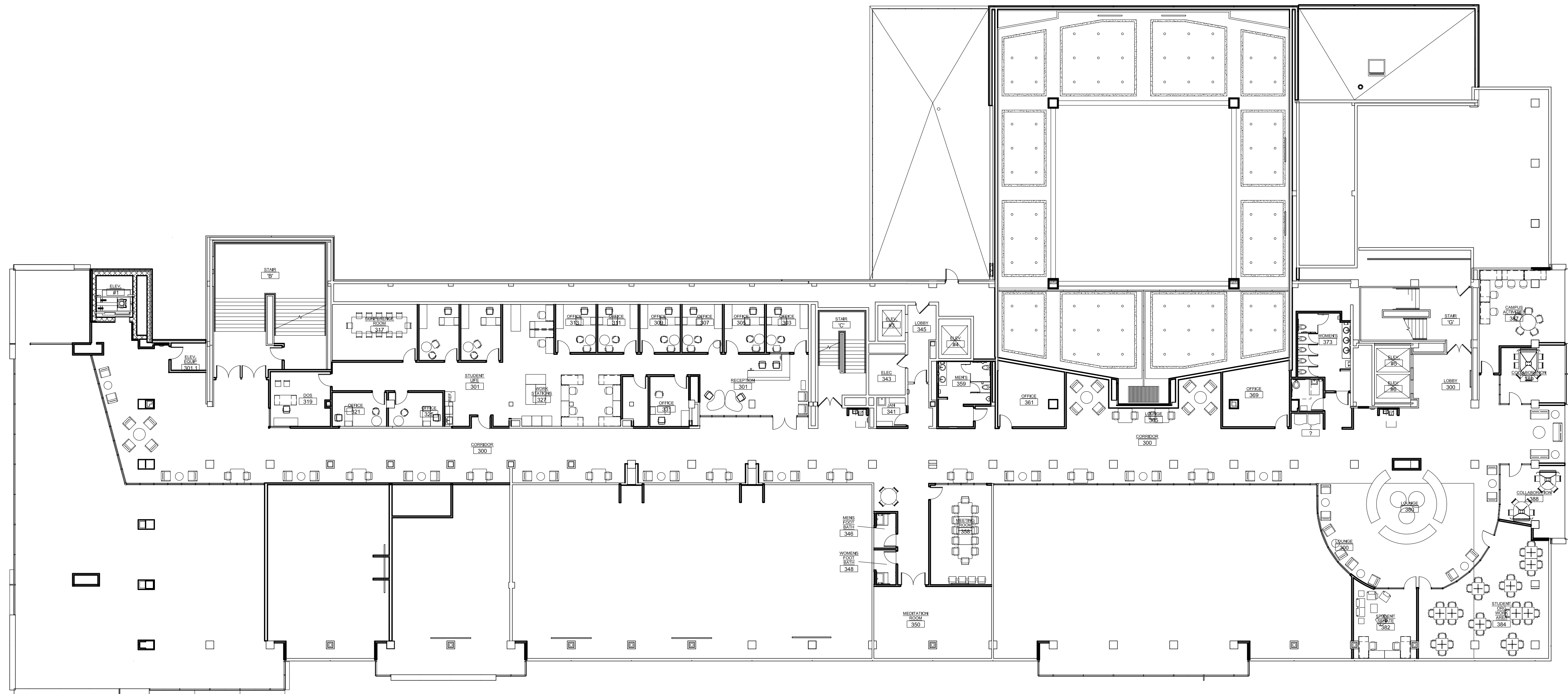
SHEET NO.

\_\_\_\_\_

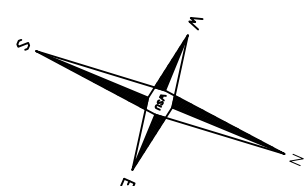


DISCLAIMER:  
WAYNE STATE UNIVERSITY, FACILITIES PLANNING AND MANAGEMENT  
MAKES THESE DOCUMENTS AVAILABLE ON AN "AS IS" BASIS.  
THESE DRAWINGS WERE CREATED USING AUTOCAD FROM AUTODESK AND  
ARE ACCURATE FOR SPACE MANAGEMENT, FLOOR PLAN USE. THE USER  
WILL HOLD HARMLESS WSU, ITS OFFICERS, AGENTS, AND EMPLOYEES  
FROM DAMAGES OR COST, INCLUDING REASONABLE ATTORNEYS FEES,  
ARISING FROM THE USE OF THESE DRAWINGS.





STUDENT CENTER BUILDING  
BUILDING #034  
THIRD FLOOR PLAN

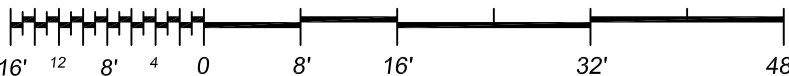


DISCLAIMER:  
WAYNE STATE UNIVERSITY, FACILITIES PLANNING AND MANAGEMENT  
MAKES THESE DOCUMENTS AVAILABLE ON AN 'AS IS' BASIS.  
THESE DRAWINGS WERE CREATED USING AUTOCAD FROM AUTODESK AND  
ARE ACCURATE FOR SPACE MANAGEMENT, FLOOR PLAN USE. THE USERS  
WILL HOLD HARMLESS WSU, ITS OFFICERS, AGENTS, AND EMPLOYEES  
FROM DAMAGES OR COST, INCLUDING REASONABLE ATTORNEY'S FEES,  
ARISING FROM THE USE OF THESE DRAWINGS.



Third Floor Power Plan

Scale : 1/16" = 1'-0"



WAYNE STATE UNIVERSITY - Facilities Planning & Management  
CSC TELECOM ELECTRICAL UPGRADE

PROJECT TITLE :  
034 Student Center Bldg  
VOIP - Phase 2A

SHEET :  
Third Floor Power Plan

REVISIONS:


DATE :  
Sept. 30, 2015

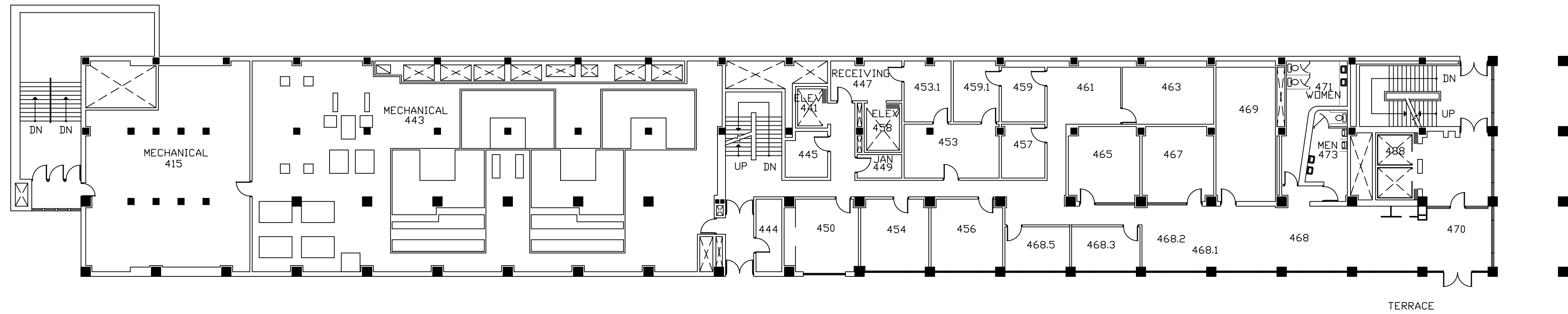
ISSUE :  
BIDS

PROJECT NUMBER  
#193-248452

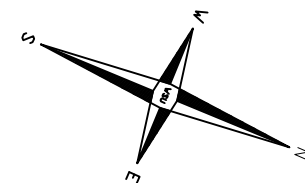
SHEET NO.

E-4

WAYNE STATE  
UNIVERSITY



STUDENT CENTER BUILDING  
BUILDING #034  
FOURTH FLOOR PLAN

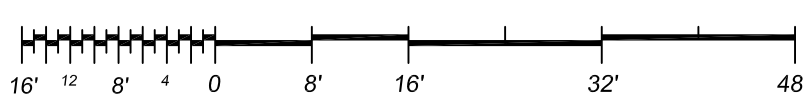


DISCLAIMER:  
WAYNE STATE UNIVERSITY, FACILITIES PLANNING AND MANAGEMENT  
MAKES THESE DOCUMENTS AVAILABLE ON AN 'AS IS' BASIS.  
THESE DRAWINGS WERE CREATED USING AUTOCAD FROM AUTODESK, AND  
ARE ACCURATE FOR SPACE MANAGEMENT, FLOOR PLAN USE. THE USERS  
WILL HOLD HARMLESS WSU, ITS OFFICERS, AGENTS, AND EMPLOYEES  
FROM DAMAGES OR COST, INCLUDING REASONABLE ATTORNEY'S FEES,  
ARISING FROM THE USE OF THESE DRAWINGS.



Fourth Floor Power Plan

Scale : 1/16" = 1'-0"



WAYNE STATE UNIVERSITY - Facilities Planning & Management  
CSC TELECOM ELECTRICAL UPGRADE

PROJECT TITLE :  
034 Student Center Bldg  
VOIP - Phase 2A

SHEET :  
Fourth Floor Power Plan

REVISIONS:

WAYNE STATE  
UNIVERSITY

DATE :  
Sept. 30, 2015

ISSUE :  
BIDS

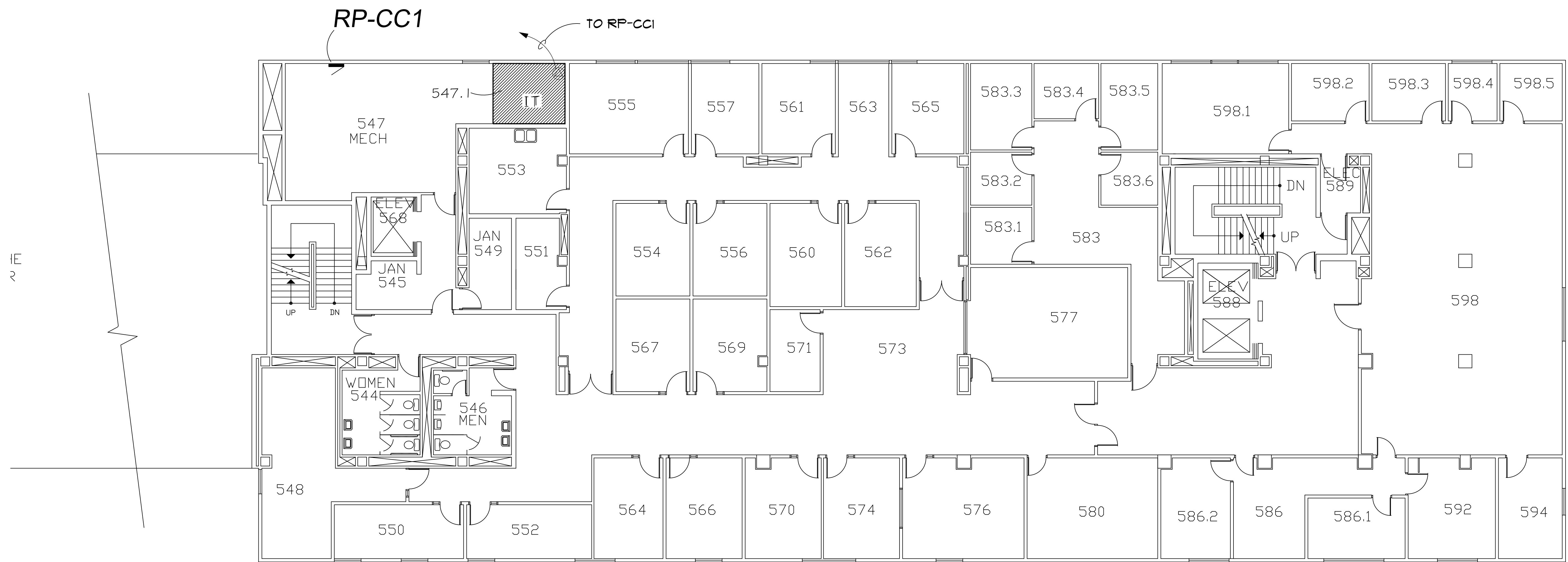
PROJECT NUMBER  
#193-248452

SHEET NO.

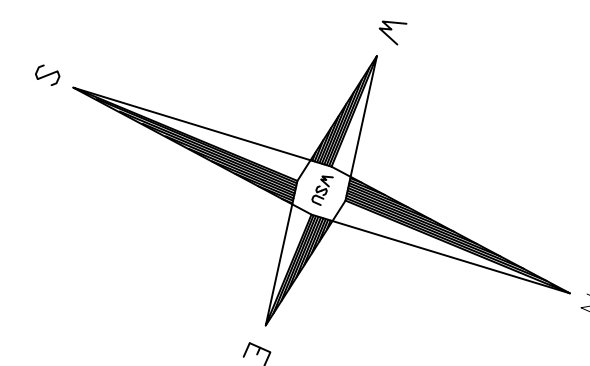
E-5


WAYNE STATE UNIVERSITY - Facilities Planning & Management	Fifth Floor Power Plan
CSC TELECOM ELECTRICAL UPGRADE	
PROJECT TITLE :	034 - Student Center Bldg
SHEET :	VOIP - Phase 2A

DATE :	Sept. 30, 2015
ISSUE :	BIDS
PROJECT NUMBER :	#193-248452
SHEET NO :	E-6



STUDENT CENTER BUILDING  
BUILDING #034  
FIFTH FLOOR PLAN

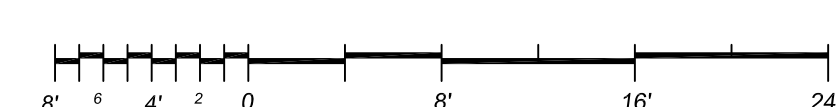


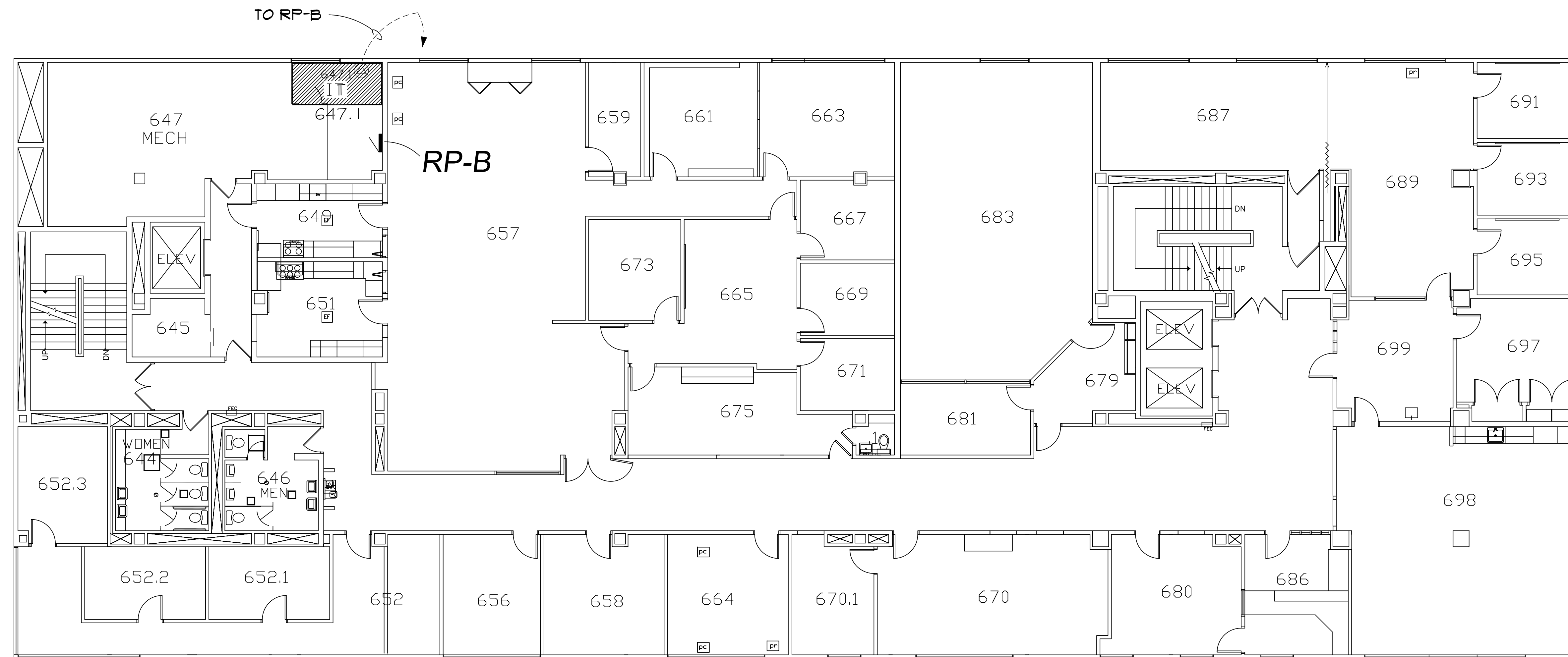
DISCLAIMER:  
WAYNE STATE UNIVERSITY, FACILITIES PLANNING AND MANAGEMENT  
MAKES THESE DOCUMENTS AVAILABLE ON AN "AS IS" BASIS.  
THESE DRAWINGS WERE CREATED USING AUTOCAD FROM AUTODESK AND  
ARE ACCURATE FOR SPACE MANAGEMENT, 'FLOOR PLAN' USE. THE USERS  
WILL HOLD HARMLESS WSU, ITS OFFICERS, AGENTS, AND EMPLOYEES  
FROM DAMAGES OR COST, INCLUDING REASONABLE ATTORNEY'S FEES,  
ARISING FROM THE USE OF THESE DRAWINGS.



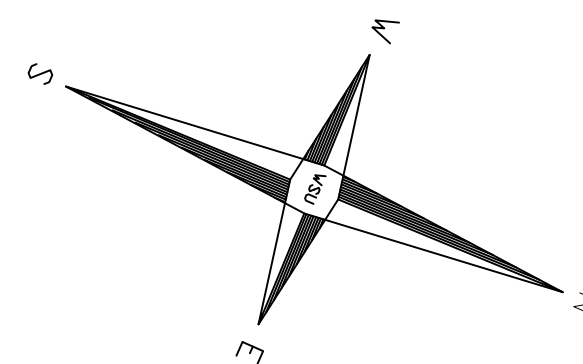
Fifth Floor Power Plan

Scale : 1/8" = 1'-0"

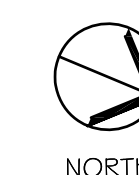




STUDENT CENTER BUILDING  
BUILDING #034  
SIXTH FLOOR PLAN

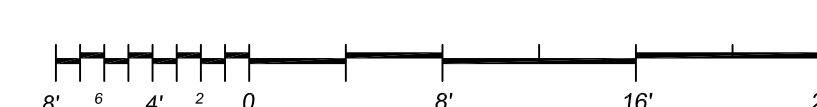


DISCLAIMER:  
WAYNE STATE UNIVERSITY, FACILITIES PLANNING AND MANAGEMENT  
MAKES THESE DOCUMENTS AVAILABLE ON AN "AS IS" BASIS.  
THESE DRAWINGS WERE CREATED USING AUTOCAD FROM AUTODESK AND  
ARE ACCURATE FOR SPACE MANAGEMENT, 'FLOOR PLAN' USE. THE USERS  
WILL HOLD HARMLESS WSU, ITS OFFICERS, AGENTS, AND EMPLOYEES  
FROM DAMAGES OR COST, INCLUDING REASONABLE ATTORNEY'S FEES,  
ARISING FROM THE USE OF THESE DRAWINGS.



Sixth Floor Power Plan

Scale : 1/8" = 1'-0"



WAYNE STATE UNIVERSITY - Facilities Planning & Management  
CSC TELECOM ELECTRICAL UPGRADE

034 - Student Center Bldg  
VOIP - Phase 2A

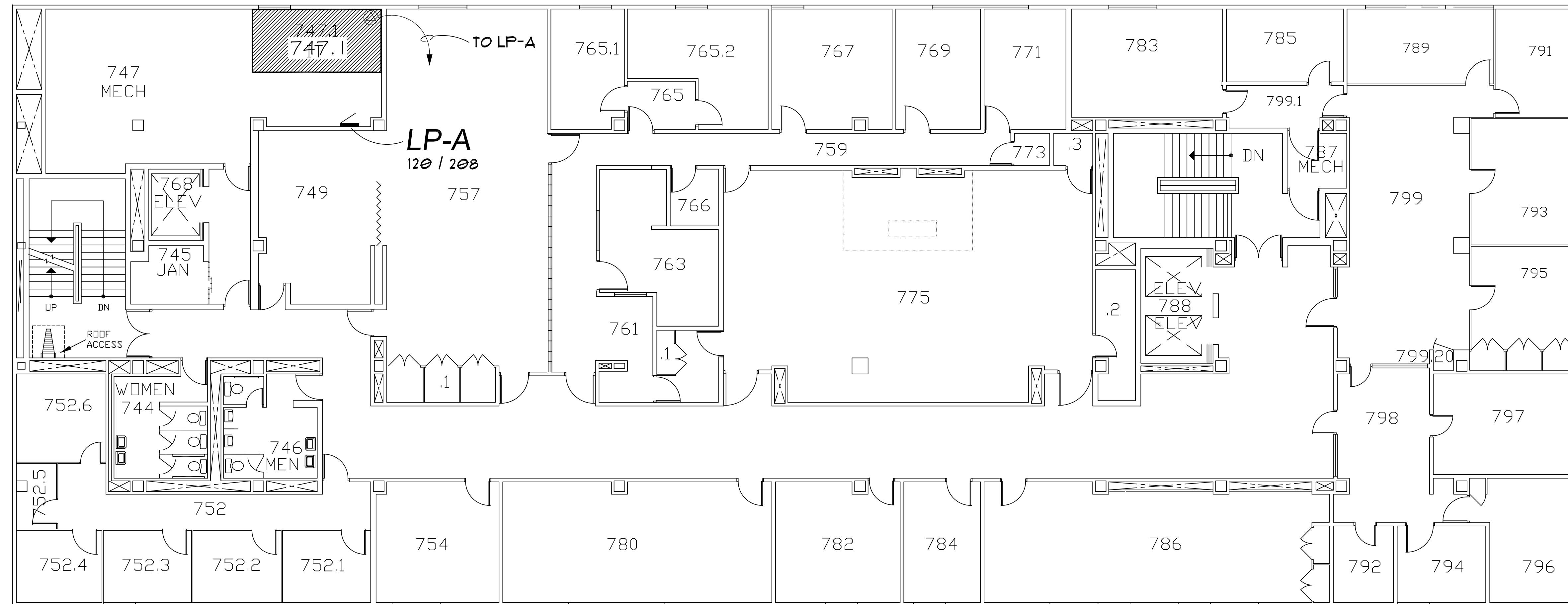
Sixth Floor Power Plan

DATE :  
Sept. 30, 2015

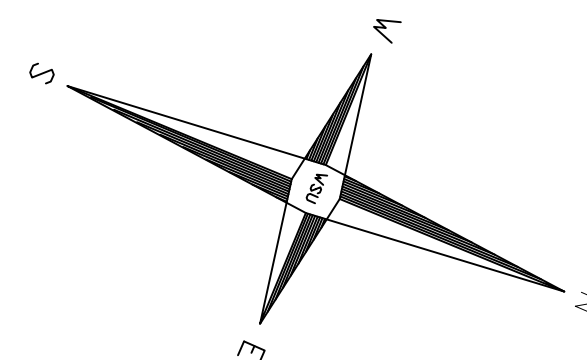
ISSUE :  
BIDS

PROJECT NUMBER  
#193-248452

SHEET NO.  
E-7



STUDENT CENTER BUILDING  
BUILDING #034  
SEVENTH FLOOR PLAN

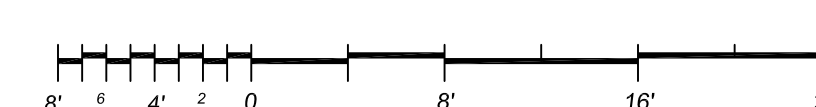


DISCLAIMER:  
WAYNE STATE UNIVERSITY, FACILITIES PLANNING AND MANAGEMENT  
MAKES THESE DOCUMENTS AVAILABLE ON AN "AS IS" BASIS.  
THESE DRAWINGS WERE CREATED USING AUTOCAD FROM AUTODESK AND  
ARE ACCURATE FOR SPACE MANAGEMENT, 'FLOOR PLAN' USE. THE USERS  
WILL HOLD HARMLESS WSU, ITS OFFICERS, AGENTS, AND EMPLOYEES  
FROM DAMAGES OR COST, INCLUDING REASONABLE ATTORNEY'S FEES,  
ARISING FROM THE USE OF THESE DRAWINGS.



Seventh Floor Power Plan

Scale : 1/8" = 1'-0"



WAYNE STATE UNIVERSITY - Facilities Planning & Management  
CSC TELECOM ELECTRICAL UPGRADE

034 - Student Center Bldg  
VOIP - Phase 2A

Seventh Floor Power Plan

DATE :  
Sept. 30, 2015

ISSUE :  
BIDS

PROJECT NUMBER  
#193-248452

SHEET NO.

E-8