

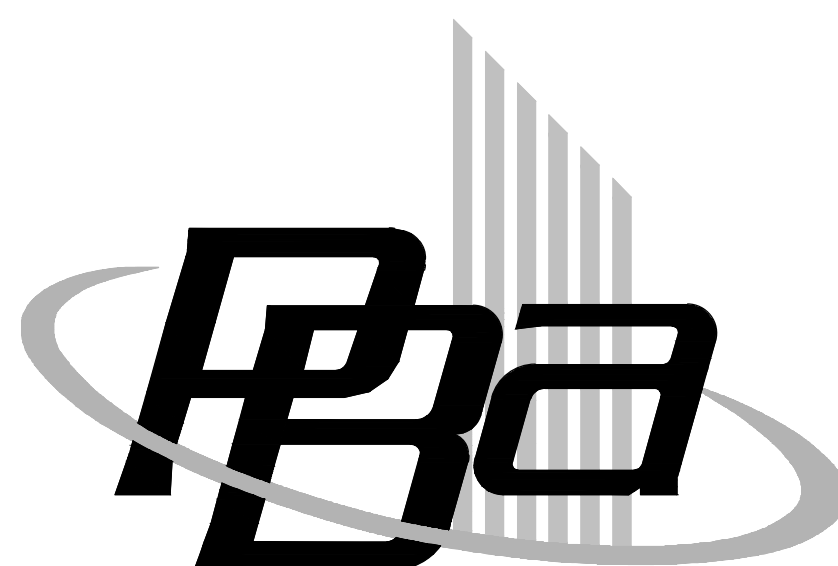
WAYNE STATE UNIVERSITY SCIENCE HALL FIRE ALARM REPLACEMENT

WSU PROJECT NO. 005-240912
ISSUED FOR BIDS 04/28/2014

**WAYNE STATE
UNIVERSITY**

Facilities Planning & Management
Design & Construction Services
5454 Cass Ave.
Detroit MI 48202

WSU PROJECT NO: 005-240912



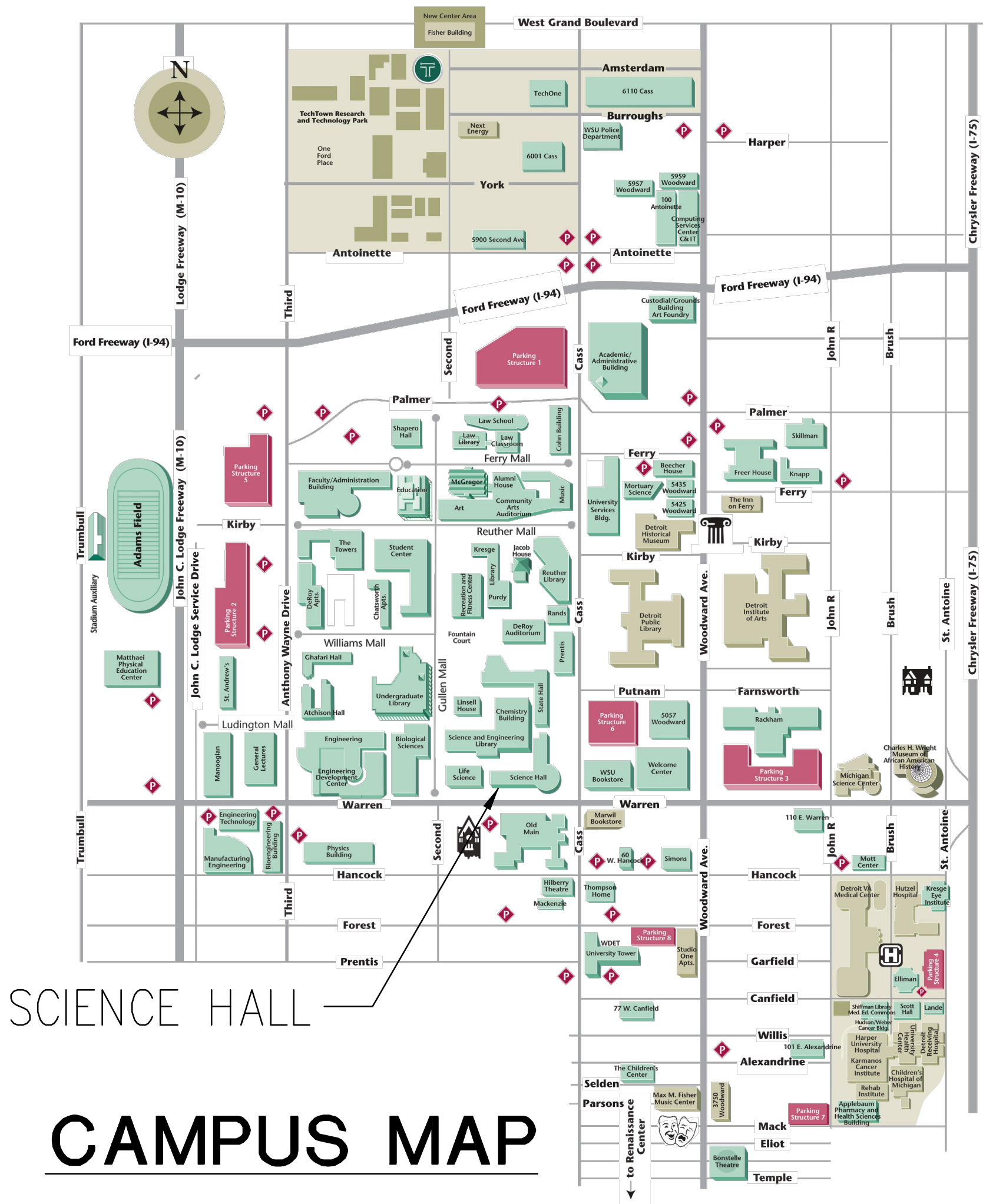
Peter Basso Associates Inc
CONSULTING ENGINEERS

5145 Livernois, Suite 100
Troy, Michigan 48098-3276
Tel: 248-879-5666
Fax: 248-879-0007
www.PeterBassoAssociates.com

PBA PROJECT NO: 2014.0119.00

ELECTRICAL DRAWING INDEX

SHEET NO.	SHEET TITLE
E0.1	ELECTRICAL STANDARDS AND DRAWING INDEX
E0.2	ELECTRICAL STANDARD SCHEDULES
E1.0	BASEMENT ELECTRICAL DEMOLITION PLAN
E1.1	FIRST FLOOR ELECTRICAL DEMOLITION PLAN
E1.2	SECOND FLOOR ELECTRICAL DEMOLITION PLAN
E1.3	THIRD FLOOR ELECTRICAL DEMOLITION PLAN
E1.4	FOURTH FLOOR ELECTRICAL DEMOLITION PLAN
E1.5	MEZZANINE, PENTHOUSE AND SUB-BASEMENT ELECTRICAL DEMOLITION PLANS
E2.0	BASEMENT ELECTRICAL NEW WORK PLAN
E2.1	FIRST FLOOR ELECTRICAL NEW WORK PLAN
E2.2	SECOND FLOOR ELECTRICAL NEW WORK PLAN
E2.3	THIRD FLOOR ELECTRICAL NEW WORK PLAN
E2.4	FOURTH FLOOR ELECTRICAL NEW WORK PLAN
E2.5	MEZZANINE, PENTHOUSE AND SUB-BASEMENT ELECTRICAL NEW WORK PLANS



ELECTRICAL SYMBOL LIST

(NOTE: SOME SYMBOLS AND ABBREVIATIONS SHOWN MAY NOT APPLY TO THIS PROJECT)

SYMBOL	DESCRIPTION	SYMBOL	DESCRIPTION	SYMBOL	DESCRIPTION	SYMBOL	DESCRIPTION
	FIXTURE TYPE		TWO-WAY COMMUNICATION SYSTEM CALL STATION		CONTROL PANEL		SECURITY CAMERA
	LIGHTING FIXTURE		TWO-WAY COMMUNICATION SYSTEM AUTO DIALER		MOTOR		MOTION DETECTOR
	DIRECT/INDIRECT LIGHTING FIXTURE		TWO-WAY COMMUNICATION SYSTEM ANNUNCIATOR & COMMUNICATION PANEL		VARIABLE FREQUENCY CONTROLLER		SECURITY KEY SWITCH
	EMERGENCY FIXTURE		TWO-WAY COMMUNICATION SYSTEM POWER SUPPLY WITH BATTERY BACK-UP		MANUAL CONTROLLER		DOOR CONTACT
	NIGHT LIGHTING FIXTURE		TWO-WAY COMMUNICATION SYSTEM AUTO DIALER POWER SUPPLY WITH BATTERY BACK-UP		MAGNETIC CONTROLLER		KEY PAD
	LIGHTING FIXTURE		TWO-WAY COMMUNICATION SYSTEM AUTO DIALER POWER SUPPLY WITH BATTERY BACK-UP		COMBINATION MAGNETIC CONTROLLER		ACCESS CONTROL STATION
	EMERGENCY FIXTURE		REMOTE GENERATOR ANNUNCIATOR PANEL		NON-FUSIBLE DISCONNECT SWITCH		DURESS PUSH BUTTON STATION
	WALL MOUNTED LIGHTING FIXTURE		AUTOMATIC TRANSFER SWITCH		FUSIBLE DISCONNECT SWITCH		DELAYED EGRESS
	LIGHTING FIXTURE		UN-INTERRUPTIBLE POWER SUPPLY		ENCLOSED CIRCUIT BREAKER		REQUEST TO EXIT STATION
	EMERGENCY FIXTURE		LOW VOLTAGE CONTROL STATION "X" INDICATES TYPE		JUNCTION BOX		CIRCUIT BREAKER
	DIRECTIONAL LIGHTING FIXTURE		SINGLE RECEPTACLE		HARD WIRE POWER CONNECTION		DRAWOUT CIRCUIT BREAKER MANUALLY OPERATED
	PENDANT LIGHTING FIXTURE		DUPLEX RECEPTACLE		AUTOMATIC DOOR CONTROLLER		DRAWOUT CIRCUIT BREAKER ELECTRICALLY OPERATED
	WALL SCONCE		QUAD RECEPTACLE		AUTOMATIC DOOR PUSH PAD OPERATOR		SWITCH
	LIGHTING TRACK		ABOVE COUNTER DUPLEX RECEPTACLE (SIMILAR FOR TAMPER RESISTANT, QUADS, EMERGENCY AND GFI RECEPTACLES)		GROUND ROD		AUTOMATIC OR MANUAL TRANSFER SWITCH
	TRACK LIGHTING FIXTURE		DUPLEX RECEPTACLE-GROUND FAULT CIRCUIT INTERRUPTER		GROUND CONNECTION		FUSE
	POLE MOUNTED LIGHTING FIXTURE		DUPLEX EMERGENCY RECEPTACLE		CONDUIT SLEEVE WITH BUSHINGS LENGTH AS REQUIRED "X" INDICATES CONDUIT SIZE		TRANSFORMER
	POLE MOUNTED LIGHTING FIXTURE - POST TOP		TAMPER RESISTANT RECEPTACLE		CONDUIT DOWN		CURRENT TRANSFORMER
	BOLLARD LIGHTING FIXTURE		QUAD TAMPER RESISTANT RECEPTACLE		EMPTY BOX FOR FUTURE TELECOMMUNICATION OUTLET		POTENTIAL TRANSFORMER
	EMERGENCY LIGHTING UNIT		ABOVE COUNTER DUPLEX TAMPER RESISTANT RECEPTACLE		EMPTY BOX FOR FUTURE CEILING MOUNTED TELECOMMUNICATION OUTLET		LIGHTNING ARRESTOR
	EXIT LIGHTING FIXTURE WITH DIRECTIONAL ARROWS (SHADED AREA INDICATES FACE)		DUPLEX UPS RECEPTACLE		EMPTY BOX FOR FUTURE CEILING MOUNTED TELECOMMUNICATION OUTLET		PANELBOARD "X" INDICATES PANELBOARD NAME
	EXIT LIGHTING FIXTURE WITH DIRECTIONAL ARROWS (SHADED AREA INDICATES FACE)		CEILING MOUNTED DUPLEX RECEPTACLE		EMPTY BOX FOR FUTURE CEILING MOUNTED TELECOMMUNICATION OUTLET "X" INDICATES TYPE		GROUND
	EXIT LIGHTING FIXTURE - WALL MOUNTED		SPECIAL RECEPTACLE - REFER TO ELECTRICAL STANDARD SCHEDULES		ABOVE COUNTER TELECOMMUNICATION OUTLET "X" INDICATES TYPE		STRESS CONE TERMINATION
	EMERGENCY LOAD TRANSFER DEVICE		MULTI-OUTLET RACEWAY		TELECOMMUNICATION CEILING MOUNTED OUTLET "X" INDICATES TYPE		SECURITY KEY INTERLOCK
	SINGLE POLE TOGGLE SWITCH		MULTI-SERVICE DROP SEE ELECTRICAL DETAILS AND DIAGRAMS SHEET "X" INDICATES TYPE		TELECOMMUNICATION BACKBOARD		ENGINE GENERATOR
	TWO POLE TOGGLE SWITCH		POKE THRU SERVICE FITTING "X" INDICATES TYPE		TELECOMMUNICATION GROUNDING BUS BAR		UTILITY METER
	3 WAY TOGGLE SWITCH		FLOOR BOX SERVICE FITTING "X" INDICES TYPE		TELECOMMUNICATION MAIN GROUNDING BUS BAR		AMMETER
	4 WAY TOGGLE SWITCH		ACCESS FLOOR SERVICE FITTING "X" INDICATES TYPE		INTERCOM OUTLET		VOLTMETER
	KEY OPERATED SWITCH		CORD REEL "X" INDICATES TYPE		HOSPITAL PAGING SPEAKER		AMMETER SWITCH
	3 WAY KEY OPERATED SWITCH		DUAL SWITCHING FOR INNER/OUTER LAMPS OF FLUORESCENT LIGHT FIXTURES		SPEAKER - WALL MOUNTED		VOLTMETER SWITCH
	4 WAY KEY OPERATED SWITCH		3-WAY DUAL SWITCHING FOR INNER/OUTER LAMPS OF FLUORESCENT LIGHT FIXTURES		MICROPHONE		SURGE PROTECTIVE DEVICE
	DIMMER SWITCH		4-WAY DUAL SWITCHING FOR INNER/OUTER LAMPS OF FLUORESCENT LIGHT FIXTURES		VOLUME CONTROL/STATION SELECTOR		CONTROL RELAY
	3 WAY DIMMER SWITCH		DIGITAL TIME SWITCH		SIGNALING BELL		TIME DELAY RELAY
	PILOT SWITCH		ILLUMINATED TOGGLE SWITCH FOR CONTROL OF LIGHTING ON CRITICAL POWER-ILLUMINATED WHEN SWITCH IS IN "OFF" POSITION		SINGLE FACE CLOCK - CEILING MOUNTED		THERMAL OVERLOAD RELAY
			LOW VOLTAGE SWITCH		SINGLE FACE CLOCK - WALL MOUNTED		N.O. PUSH BUTTON SINGLE CIRCUIT
			OCCUPANCY SENSOR		DOUBLE FACE CLOCK - CEILING MOUNTED		N.C. PUSH BUTTON SINGLE CIRCUIT
			OCCUPANCY SENSOR REFER TO ELECTRICAL STANDARD SCHEDULES		DOUBLE FACE COMBINATION CLOCK/SPEAKER CEILING MOUNTED		CABLE VAULT "X-X" INDICATES TYPE
			OCCUPANCY SENSOR "X" INDICATES TYPE		DOUBLE FACE CLOCK - WALL MOUNTED		BRANCH CIRCUIT PANELBOARD
			MUSIC/DISASTER SPEAKER		DOUBLE FACE COMBINATION CLOCK/SPEAKER WALL MOUNTED		MOTOR CONTROL CENTER
					TIME CLOCK		TRANSFORMER
					CONTACTOR		DISTRIBUTION PANEL
					PHOTOCELL		GROUND BUS
					TWIST TIMER		PLUG IN BUSWAY
							FEEDER BUSWAY

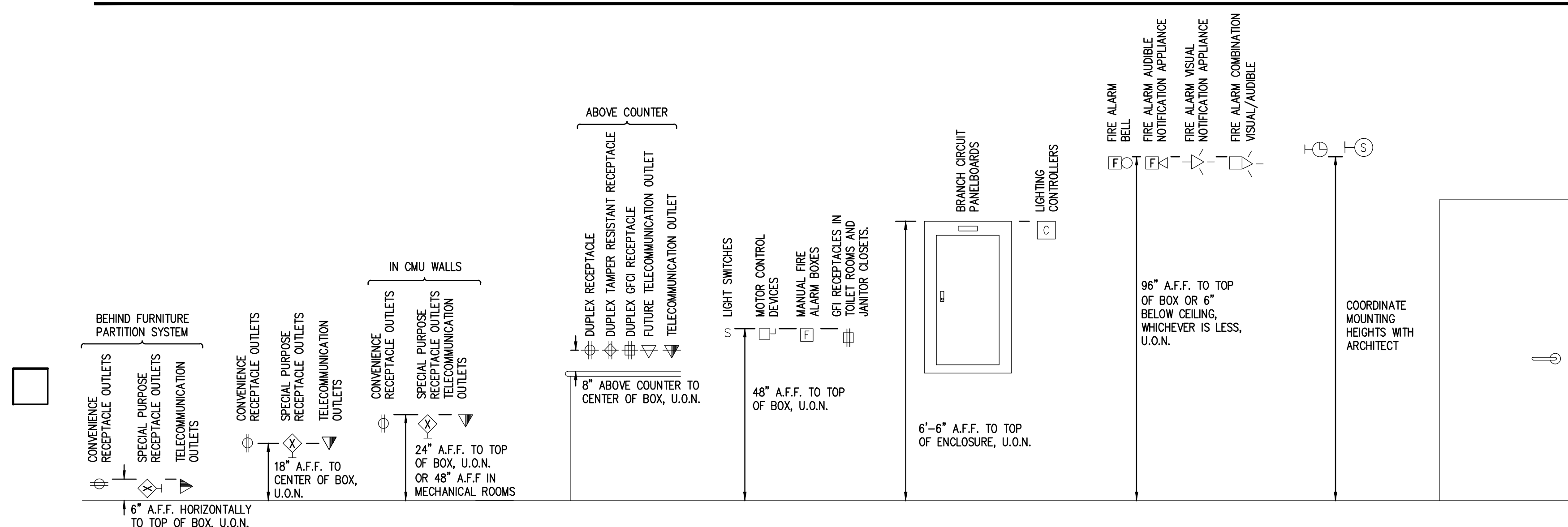
ELECTRICAL DRAWING INDEX

SHEET NO.	SHEET TITLE
E0.1	ELECTRICAL STANDARDS AND DRAWING INDEX
E0.2	ELECTRICAL STANDARD SCHEDULES
E1.0	BASEMENT ELECTRICAL DEMOLITION PLAN
E1.1	FIRST FLOOR ELECTRICAL DEMOLITION PLAN
E1.2	SECOND FLOOR ELECTRICAL DEMOLITION PLAN
E1.3	THIRD FLOOR ELECTRICAL DEMOLITION PLAN
E1.4	FOURTH FLOOR ELECTRICAL DEMOLITION PLAN
E1.5	MEZZANINE/PENTHOUSE AND SUB-BASEMENT ELECTRICAL DEMOLITION PLANS
E2.0	BASEMENT ELECTRICAL NEW WORK PLAN
E2.1	FIRST FLOOR ELECTRICAL NEW WORK PLAN
E2.2	SECOND FLOOR ELECTRICAL NEW WORK PLAN
E2.3	THIRD FLOOR ELECTRICAL NEW WORK PLAN
E2.4	FOURTH FLOOR ELECTRICAL NEW WORK PLAN
E2.5	MEZZANINE/PENTHOUSE AND SUB-BASEMENT ELECTRICAL NEW WORK PLANS

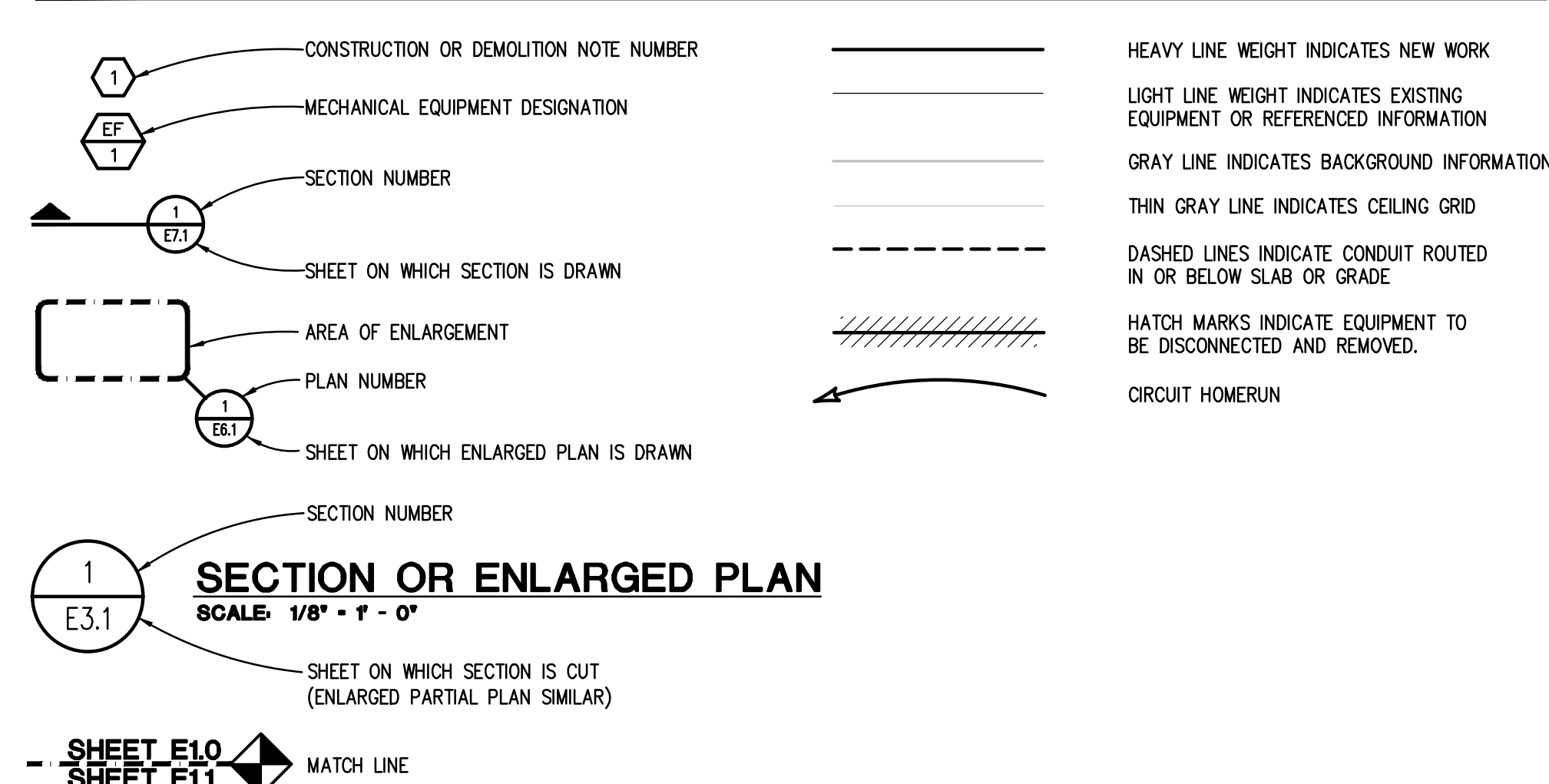
ELECTRICAL ABBREVIATION LIST

ABBREVIATION	DESCRIPTION	ABBREVIATION	DESCRIPTION	ABBREVIATION	DESCRIPTION
A	AMPERES	G/GND/EG	GROUND	OC	ON CENTER
AF	AMPERES FRAME (BREAKER RATING)	GFO	GROUND FAULT CIRCUIT INTERRUPTER	P	POLE
A.F.F.	AMPS FINISH FLOOR	HOA	HAND-OFF-AUTO	PB	PUSHBUTTON STATION
AL	AMPS INTERRUPTING CAPACITY	HP	HORSEPOWER	PH	PHASE
AL	AUDIENCE LEFT	HV	HIGH VOLTAGE	PT	POTENTIAL TRANSFORMER
AL	AUDIENCE RIGHT	HERTZ	HERTZ	PD	POWER DISTRIBUTION PANEL
AT	AMPERES TRIP (BREAKER SETTING)	IG	ISOLATED GROUND	RECP.T	RECEPTACLE
ATS	AUTOMATIC TRANSFER SWITCH	JB	JUNCTION BOX	RECP.TE	RECEPTACLE DISTRIBUTION PANEL
AUX	AUXILIARY	KV	KILOVOLT	RP	RECEPTACLE PANEL
BKR	BREAKER	KVA	KILOVOLT - AMPERES	RSC	RIGID STEEL CONDUIT
BPS	BOLTED PRESSURE SWITCH	KWH	KILOWATT	SCHED	SCHEDULE
C	CONDUIT	KWH	KILOWATT - HOURS	SW	SWITCH
CB	CIRCUIT BREAKER	LA	LIGHTNING ARRESTOR	SWB	SWITCHBOARD
CKT	CIRCUIT	LP	LIGHTING PANEL	TB	TERMINAL BOX
CT	CURRENT TRANSFORMER	LP	LIGHTING LIGHTING PANEL	TELECOM	TELECOMMUNICATIONS
DEMO	DEMOLITION	MAX	MAXIMUM	TP	TAMPER PROOF
DN	DIMENSION	MCB	MAIN CIRCUIT BREAKER	TB	TELEPHONE TERMINAL BACKBOARD
DISC	DISCONNECT	MCC	MOTOR CONTROL CENTER	TYP	TYPE
DP	DISTRIBUTION PANEL	MDP	MAIN DISTRIBUTION PANEL	U.O.N.	UNLESS OTHERWISE NOTED
DS	DOWNSTAGE	MCH	MECHANICAL	US	UPSTAGE
DWG	DRAWING	MIN	MINIMUM	V	VOLTS
EBU	EMERGENCY BATTERY UNIT	MISCELLANEOUS	MIN LUGS ONLY	W	WIRE
EC	ELECTRICAL CONTRACTOR	MSC	MOUNTED	WP	WEATHERPROOF
ELEC	ELECTRICAL	MTO	MOUNTING	XMR	TRANSFORMER
EM/ EMERG	EMERGENCY	MTR	MOTOR	XP	EXPLOSION PROOF
EMT	ELECTRICAL METALLIC TUBING	N	NEUTRAL	(X)	EXISTING
EO	ELECTRICALLY OPERATED	N	NORMALLY CLOSED	(R)	RELOCATED
EW	ELECTRIC WATER COOLER	NEG	NATIONAL ELECTRICAL CODE		
EXIST	EXISTING	NE	NON-FUSIBLE		
FLA	FIRE ALARM	NIC	NOT IN CONTRACT		
FLA	FULL LOAD AMPS	NL	NIGHT LIGHT		
FCH	FLOOR	NO	NORMALLY OPEN		
FCH	FRONT OF HOUSE	NLS	NOT TO SCALE		
FU	FUSE				

STANDARD MOUNTING HEIGHTS



STANDARD METHODS OF NOTATION



SYSTEM INPUTS			SYSTEM OUTPUTS																	
			ANNUNCIATION					NOTIFICATION					FIRE SAFETY							
								NOTIFICATION					FIRE SAFETY							
			EXTERNAL SYSTEM INPUT					INITIATION					STATUS							
MANUAL FIRE BOX OPERATION			●	●					●	●	●									
SMOKE DETECTOR OPERATION			●	●					●	●	●									
DUCT DETECTOR OPERATION					●							●						●	●	●
AUTOMATIC SPRINKLER SYSTEM WATER FLOW OPERATION			●	●					●	●	●									
SPRINKLER SYSTEM OPERATION IN THE AREA SERVED BY SMOKE EXHAUST SYSTEM			●	●					●	●	●									
ALARM SIGNAL FROM SUPPRESSION SYSTEM			●	●							●				●					
SUPERVISORY SIGNAL FROM SUPPRESSION SYSTEM					●			●						●		●				
TROUBLE SIGNAL FROM SUPPRESSION SYSTEM						●	●								●	●				
SMOKE DETECTION IN AREA SERVED BY SUPPRESSION SYSTEM			●	●					●	●	●					●	●			
FIRE PROTECTION SYSTEM VALVE TAMPER OPERATION					●			●				●			●					
OPEN CIRCUIT, SHORT CIRCUIT, OR GROUND FAULT ON INITIATING DEVICE, SIGNALING LINE, OR NOTIFICATION APPLIANCE CIRCUIT.								●	●					●	●	●				
OPENING, TAMPERING, OR REMOVAL OF ALARM-INITIATING DEVICES								●	●						●	●				
OPENING, TAMPERING, OR REMOVAL OF SUPERVISORY SIGNAL INITIATING DEVICES								●	●						●	●				
LOSS OF PRIMARY POWER OF FACP								●	●						●	●				
GROUND OR SIGNAL BREAK IN FACP INTERNAL CIRCUITS								●	●						●	●				
ABNORMAL AC VOLTAGE AT THE FACP								●	●						●	●				
STANDBY BATTERY CIRCUITRY BREAK								●	●						●	●				
FAILURE OF BATTERY CHARGING SYSTEM								●	●						●	●				
ABNORMAL POSITION OF ANY SWITCH AT THE FACP								●	●						●	●				

FIRE ALARM MATRIX
NO SCALE

RACEWAY APPLICATION SCHEDULE									
RACEWAY			ELECTRICAL METALLIC TUBING (EMT)		SURFACE RACEWAY		FLEXIBLE METAL CONDUIT (FMC)		KEYED NOTES
INDOOR	EXPOSED NOT SUBJECT TO PHYSICAL DAMAGE – UNFINISHED SPACES		X						
	EXPOSED NOT SUBJECT TO PHYSICAL DAMAGE – FINISHED SPACES			X					
	CONCEALED IN CEILINGS, INTERIOR WALL AND PARTITIONS		X						
	CONNECTED TO VIBRATING EQUIPMENT				X		X		USE LFMC IN DAMP/WET LOCATIONS
	DAMP AND WET LOCATIONS					X		X	
	OPTICAL FIBER OR COMMUNICATIONS CABLE IN SPACES USED FOR ENVIRONMENTAL AIR	X							
	CONCEALED GENERAL PURPOSE DISTRIBUTION OF OPTICAL FIBER OR COMMUNICATION CABLE	X							

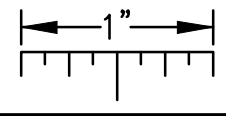
1. 'X' INDICATES ACCEPTABLE SELECTION.
2. REFER TO "CONDUCTORS AND CABLES" SPECIFICATION FOR APPLICATION LIMITATIONS OF AC/MC CABLE.



NOTE: SOME SYMBOLS AND ABBREVIATIONS
SHOWN MAY NOT APPLY TO THIS PROJECT.

g:\2014\2014-0119-00\Coat\2014-0119-E1-DPO.dwg, E10, 4/28/2014 8:32:21 AM, Brandon Mumm, Peter Basso Associates Inc.

THE FOLLOWING DIMENSION EQUALS
ONE INCH WHEN PRINTED TO SCALE.

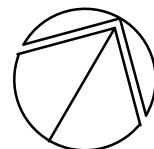
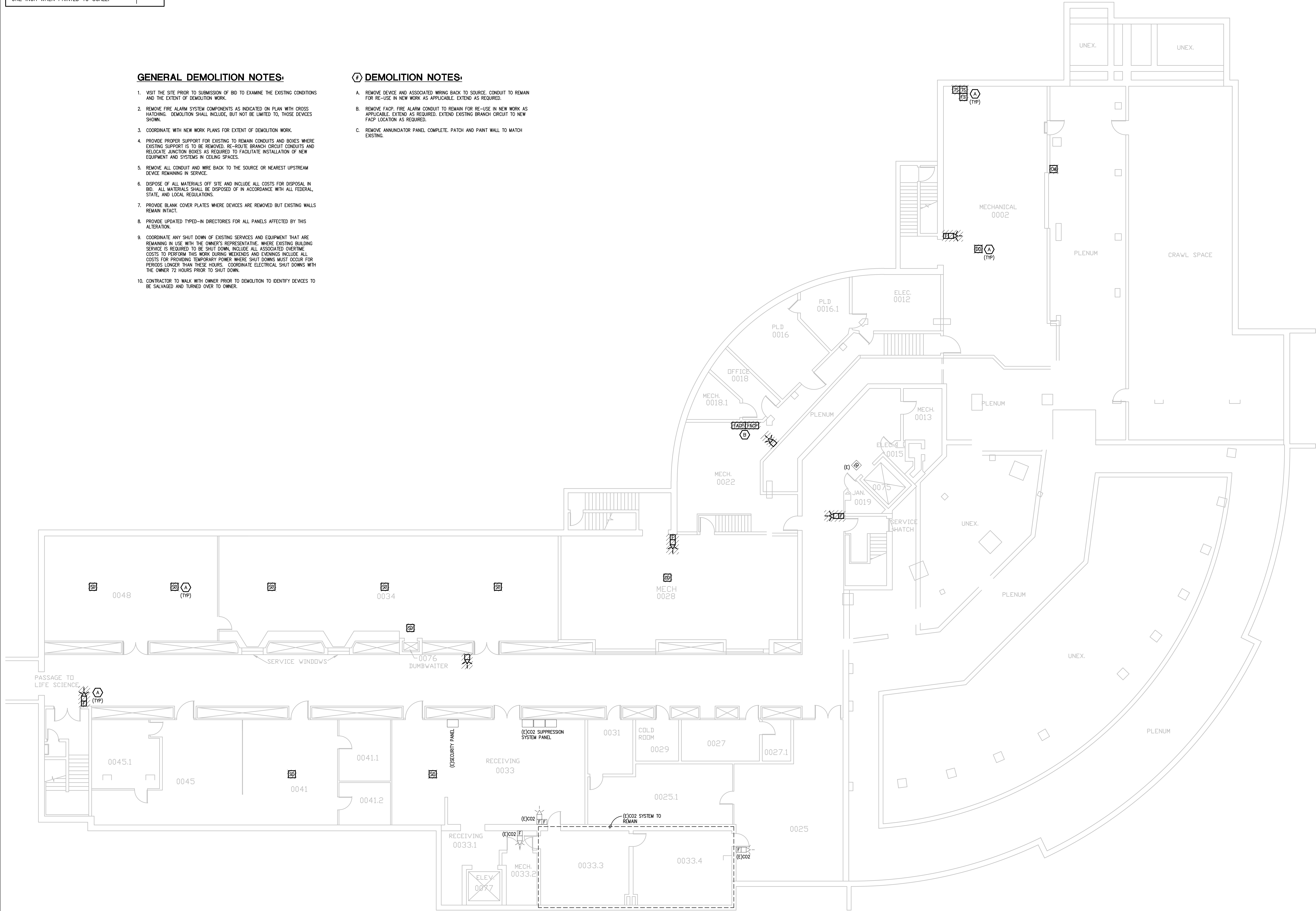


GENERAL DEMOLITION NOTES:

1. VISIT THE SITE PRIOR TO SUBMISSION OF BID TO EXAMINE THE EXISTING CONDITIONS AND THE EXTENT OF DEMOLITION WORK.
2. REMOVE FIRE ALARM SYSTEM COMPONENTS AS INDICATED ON PLAN WITH CROSS HATCHING. DEMOLITION SHALL INCLUDE, BUT NOT BE LIMITED TO, THOSE DEVICES SHOWN.
3. COORDINATE WITH NEW WORK PLANS FOR EXTENT OF DEMOLITION WORK.
4. PROVIDE PROPER SUPPORT FOR EXISTING TO REMAIN CONDUITS AND BOXES WHERE EXISTING SUPPORT IS TO BE REMOVED. RE-ROUTE BRANCH CIRCUIT CONDUITS AND RELOCATE JUNCTION BOXES AS REQUIRED TO FACILITATE INSTALLATION OF NEW EQUIPMENT AND SYSTEMS IN CEILING SPACES.
5. REMOVE ALL CONDUIT AND WIRE BACK TO THE SOURCE OR NEAREST UPSTREAM DEVICE REMAINING IN SERVICE.
6. DISPOSE OF ALL MATERIALS OFF SITE AND INCLUDE ALL COSTS FOR DISPOSAL IN BID. ALL MATERIALS SHALL BE DISPOSED OF IN ACCORDANCE WITH ALL FEDERAL, STATE, AND LOCAL REGULATIONS.
7. PROVIDE BLANK COVER PLATES WHERE DEVICES ARE REMOVED BUT EXISTING WALLS REMAIN INTACT.
8. PROVIDE UPDATED TYPED-IN DIRECTORIES FOR ALL PANELS AFFECTED BY THIS ALTERATION.
9. COORDINATE ANY SHUT DOWN OF EXISTING SERVICES AND EQUIPMENT THAT ARE REMAINING IN USE WITH THE OWNER'S REPRESENTATIVE. WHERE EXISTING BUILDING SERVICE IS REQUIRED TO BE SHUT DOWN, INCLUDE ALL ASSOCIATED OVERTIME COSTS TO PERFORM THIS WORK DURING WEEKENDS AND EVENINGS INCLUDE ALL COSTS FOR PROVIDING TEMPORARY POWER WHERE SHUT DOWNS MUST OCCUR FOR PERIODS LONGER THAN THESE HOURS. COORDINATE ELECTRICAL SHUT DOWNS WITH THE OWNER 72 HOURS PRIOR TO SHUT DOWN.
10. CONTRACTOR TO WALK WITH OWNER PRIOR TO DEMOLITION TO IDENTIFY DEVICES TO BE SALVAGED AND TURNED OVER TO OWNER.

DEMOLITION NOTES:

- A. REMOVE DEVICE AND ASSOCIATED WRING BACK TO SOURCE, CONDUIT TO REMAIN FOR RE-USE IN NEW WORK AS APPLICABLE. EXTEND AS REQUIRED.
- B. REMOVE FACP. FIRE ALARM CONDUIT TO REMAIN FOR RE-USE IN NEW WORK AS APPLICABLE. EXTEND AS REQUIRED. EXTEND EXISTING BRANCH CIRCUIT TO NEW FACP LOCATION AS REQUIRED.
- C. REMOVE ANNUNCIATOR PANEL COMPLETE. PATCH AND PAINT WALL TO MATCH EXISTING.



BASEMENT ELECTRICAL DEMOLITION PLAN
SCALE: 1/8" = 1' - 0"

REVISION

REVISION

5145 Livonia, Suite 100
Livonia, MI 48150
Tel: 248-879-5966 Fax: 248-879-4007
www.PeterBassoAssociates.com
PEA Project No. 2014-0119

Peter Basso Associates Inc
CONSULTING ENGINEERS



PROJECT TITLE
**WAYNE STATE UNIVERSITY
SCIENCE HALL FIRE ALARM
UPGRADES**
WSU Project No.: 005-240912
5045 CASS, DETROIT, MI 48201

SHEET TITLE
**BASEMENT ELECTRICAL
DEMOLITION PLAN**

DATE
04/28/14

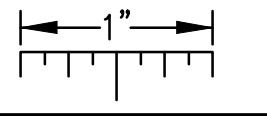
ISSUE
BIDS

SHEET No.

E1.0

g:\2014\2014-0119-00\Coat\2014-0119-E1-DP1.dwg, E11, 4/28/2014 8:32:28 AM, Brandon Mumm, Peter Basso Associates Inc.

THE FOLLOWING DIMENSION EQUALS
ONE INCH WHEN PRINTED TO SCALE.

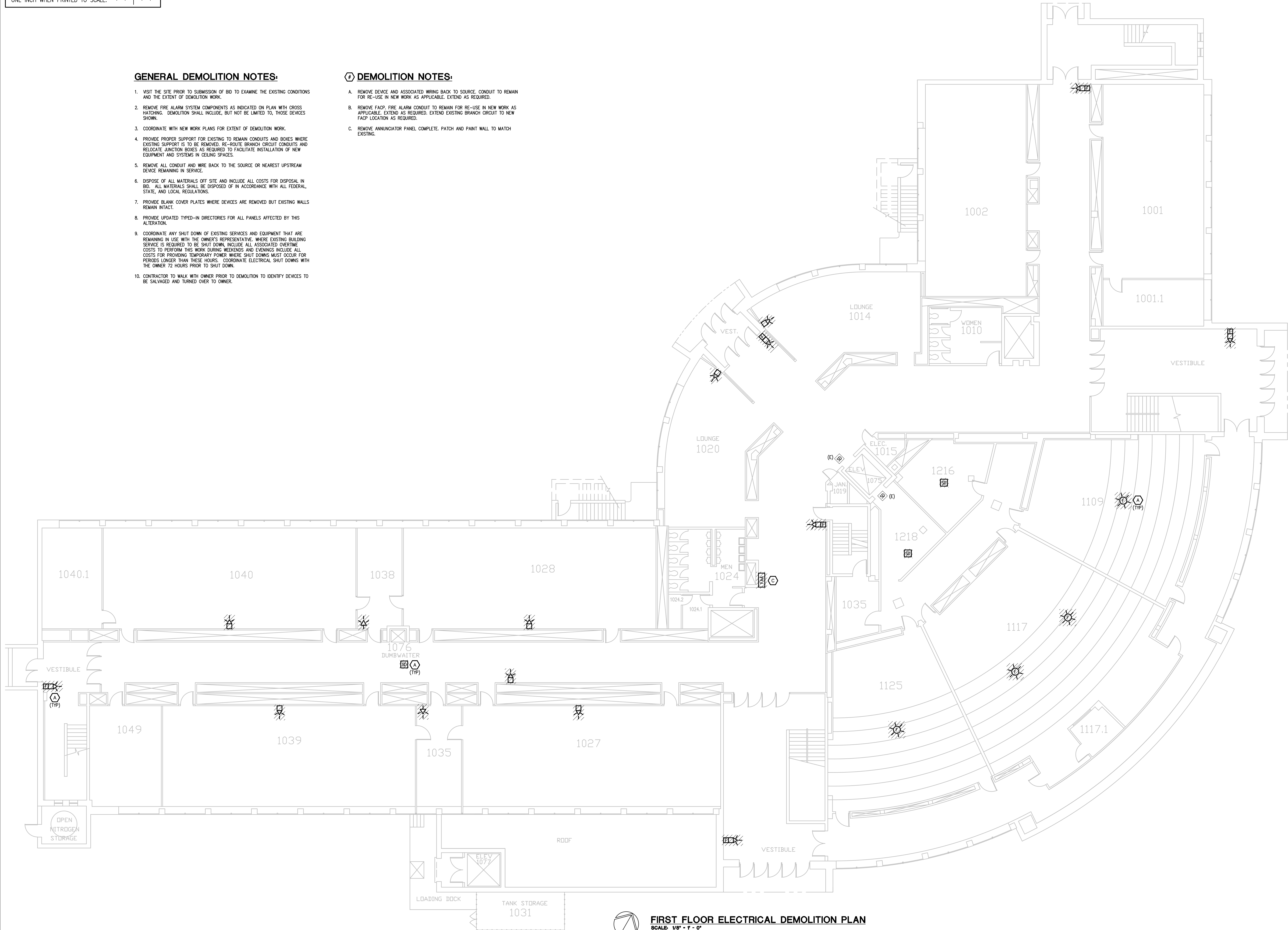


GENERAL DEMOLITION NOTES:

1. VISIT THE SITE PRIOR TO SUBMISSION OF BID TO EXAMINE THE EXISTING CONDITIONS AND THE EXTENT OF DEMOLITION WORK.
2. REMOVE FIRE ALARM SYSTEM COMPONENTS AS INDICATED ON PLAN WITH CROSS HATCHING. DEMOLITION SHALL INCLUDE, BUT NOT BE LIMITED TO, THOSE DEVICES SHOWN.
3. COORDINATE WITH NEW WORK PLANS FOR EXTENT OF DEMOLITION WORK.
4. PROVIDE PROPER SUPPORT FOR EXISTING TO REMAIN CONDUITS AND BOXES WHERE EXISTING SUPPORT IS TO BE REMOVED. RE-ROUTE BRANCH CIRCUIT CONDUITS AND RELOCATE JUNCTION BOXES AS REQUIRED TO FACILITATE INSTALLATION OF NEW EQUIPMENT AND SYSTEMS IN CEILING SPACES.
5. REMOVE ALL CONDUIT AND WIRE BACK TO THE SOURCE OR NEAREST UPSTREAM DEVICE REMAINING IN SERVICE.
6. DISPOSE OF ALL MATERIALS OFF SITE AND INCLUDE ALL COSTS FOR DISPOSAL IN BID. ALL MATERIALS SHALL BE DISPOSED OF IN ACCORDANCE WITH ALL FEDERAL, STATE, AND LOCAL REGULATIONS.
7. PROVIDE BLANK COVER PLATES WHERE DEVICES ARE REMOVED BUT EXISTING WALLS REMAIN INTACT.
8. PROVIDE UPDATED TYPED-IN DIRECTORIES FOR ALL PANELS AFFECTED BY THIS ALTERATION.
9. COORDINATE ANY SHUT DOWN OF EXISTING SERVICES AND EQUIPMENT THAT ARE REMAINING IN USE WITH THE OWNER'S REPRESENTATIVE. WHERE EXISTING BUILDING SERVICE IS REQUIRED TO BE SHUT DOWN, INCLUDE ALL ASSOCIATED OVERTIME COSTS TO PERFORM THIS WORK DURING WEEKENDS AND EVENINGS INCLUDE ALL COSTS FOR PROVIDING TEMPORARY POWER WHERE SHUT DOWNS MUST OCCUR FOR PERIODS LONGER THAN THESE HOURS. COORDINATE ELECTRICAL SHUT DOWNS WITH THE OWNER 72 HOURS PRIOR TO SHUT DOWN.
10. CONTRACTOR TO WALK WITH OWNER PRIOR TO DEMOLITION TO IDENTIFY DEVICES TO BE SALVAGED AND TURNED OVER TO OWNER.

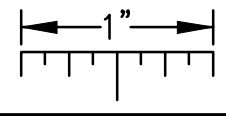
DEMOLITION NOTES:

- A. REMOVE DEVICE AND ASSOCIATED WIRING BACK TO SOURCE, CONDUIT TO REMAIN FOR RE-USE IN NEW WORK AS APPLICABLE. EXTEND AS REQUIRED.
- B. REMOVE FACP, FIRE ALARM CONDUIT TO REMAIN FOR RE-USE IN NEW WORK AS APPLICABLE. EXTEND AS REQUIRED. EXTEND EXISTING BRANCH CIRCUIT TO NEW FACP LOCATION AS REQUIRED.
- C. REMOVE ANNUNCIATOR PANEL COMPLETE. PATCH AND PAINT WALL TO MATCH EXISTING.



g:\2014\2014-0119-00\Coat\2014-0119-E1-DP2.dwg, E12, 4/28/2014 8:32:34 AM, Brandon Mumm, Peter Basso Associates Inc.

THE FOLLOWING DIMENSION EQUALS
ONE INCH WHEN PRINTED TO SCALE.

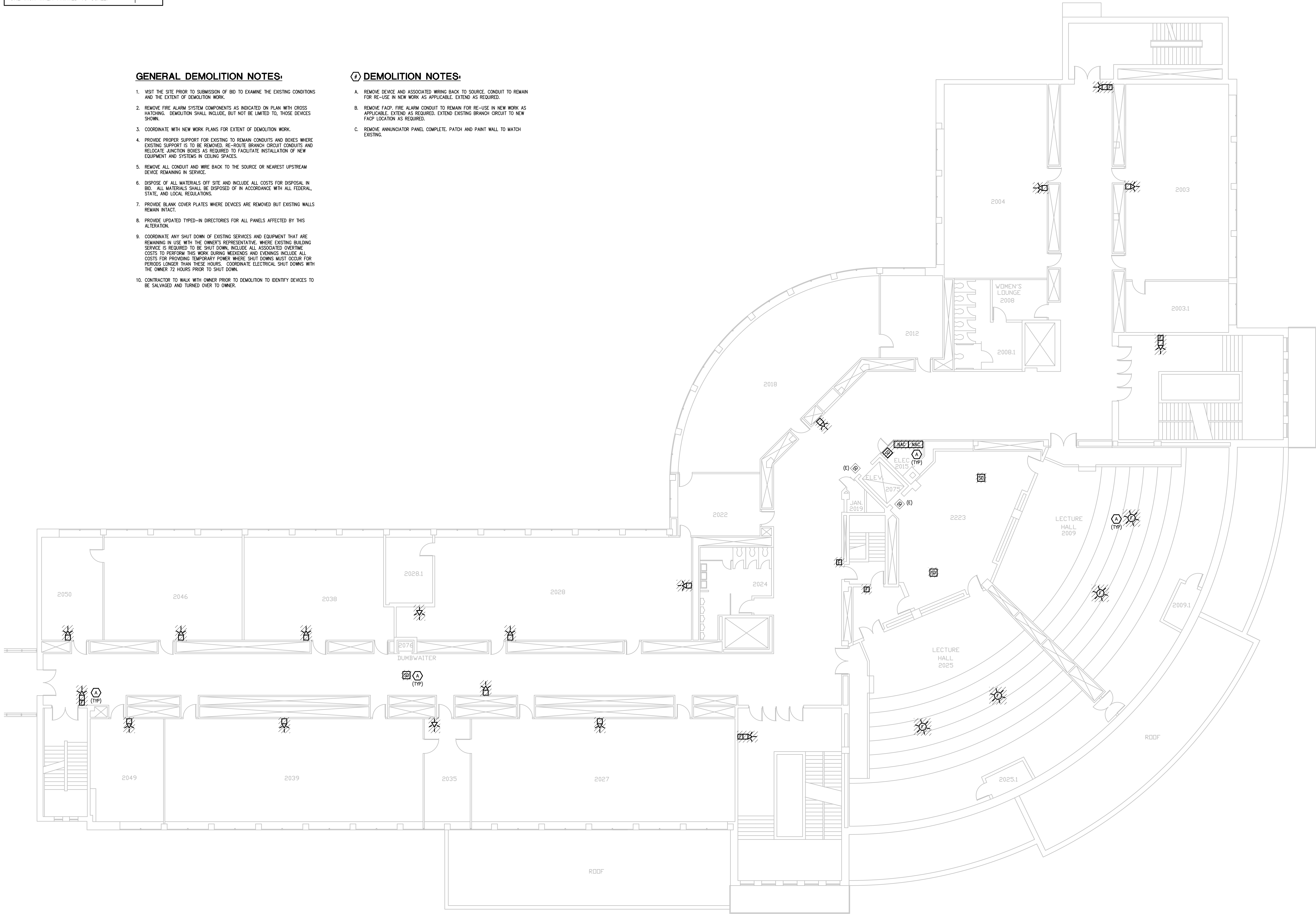


GENERAL DEMOLITION NOTES:

1. VISIT THE SITE PRIOR TO SUBMISSION OF BID TO EXAMINE THE EXISTING CONDITIONS AND THE EXTENT OF DEMOLITION WORK.
2. REMOVE FIRE ALARM SYSTEM COMPONENTS AS INDICATED ON PLAN WITH CROSS HATCHING. DEMOLITION SHALL INCLUDE, BUT NOT BE LIMITED TO, THOSE DEVICES SHOWN.
3. COORDINATE WITH NEW WORK PLANS FOR EXTENT OF DEMOLITION WORK.
4. PROVIDE PROPER SUPPORT FOR EXISTING TO REMAIN CONDUITS AND BOXES WHERE EXISTING SUPPORT IS TO BE REMOVED. RE-ROUTE BRANCH CIRCUIT CONDUITS AND RELOCATE JUNCTION BOXES AS REQUIRED TO FACILITATE INSTALLATION OF NEW EQUIPMENT AND SYSTEMS IN CEILING SPACES.
5. REMOVE ALL CONDUIT AND WIRE BACK TO THE SOURCE OR NEAREST UPSTREAM DEVICE REMAINING IN SERVICE.
6. DISPOSE OF ALL MATERIALS OFF SITE AND INCLUDE ALL COSTS FOR DISPOSAL IN BID. ALL MATERIALS SHALL BE DISPOSED OF IN ACCORDANCE WITH ALL FEDERAL, STATE, AND LOCAL REGULATIONS.
7. PROVIDE BLANK COVER PLATES WHERE DEVICES ARE REMOVED BUT EXISTING WALLS REMAIN INTACT.
8. PROVIDE UPDATED TYPED-IN DIRECTORIES FOR ALL PANELS AFFECTED BY THIS ALTERATION.
9. COORDINATE ANY SHUT DOWN OF EXISTING SERVICES AND EQUIPMENT THAT ARE REMAINING IN USE WITH THE OWNER'S REPRESENTATIVE. WHERE EXISTING BUILDING SERVICE IS REQUIRED TO BE SHUT DOWN, INCLUDE ALL ASSOCIATED OVERTIME COSTS TO PERFORM THIS WORK DURING WEEKENDS AND EVENINGS INCLUDE ALL COSTS FOR PROVIDING TEMPORARY POWER WHERE SHUT DOWNS MUST OCCUR FOR PERIODS LONGER THAN THESE HOURS. COORDINATE ELECTRICAL SHUT DOWNS WITH THE OWNER 72 HOURS PRIOR TO SHUT DOWN.
10. CONTRACTOR TO WALK WITH OWNER PRIOR TO DEMOLITION TO IDENTIFY DEVICES TO BE SALVAGED AND TURNED OVER TO OWNER.

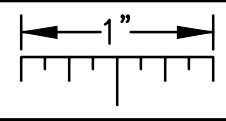
DEMOLITION NOTES:

- A. REMOVE DEVICE AND ASSOCIATED WRING BACK TO SOURCE, CONDUIT TO REMAIN FOR RE-USE IN NEW WORK AS APPLICABLE. EXTEND AS REQUIRED.
- B. REMOVE FACP, FIRE ALARM CONDUIT TO REMAIN FOR RE-USE IN NEW WORK AS APPLICABLE. EXTEND AS REQUIRED. EXTEND EXISTING BRANCH CIRCUIT TO NEW FACP LOCATION AS REQUIRED.
- C. REMOVE ANNUNCIATOR PANEL COMPLETE. PATCH AND PAINT WALL TO MATCH EXISTING.



g:\2014\2014-0119-00\Coat\2014-0119-E1-DP3.dwg, E13, 4/28/2014 8:32:41 AM, Brandon Mumm, Peter Basso Associates Inc.

THE FOLLOWING DIMENSION EQUALS
ONE INCH WHEN PRINTED TO SCALE.

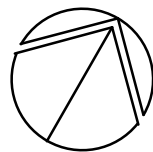
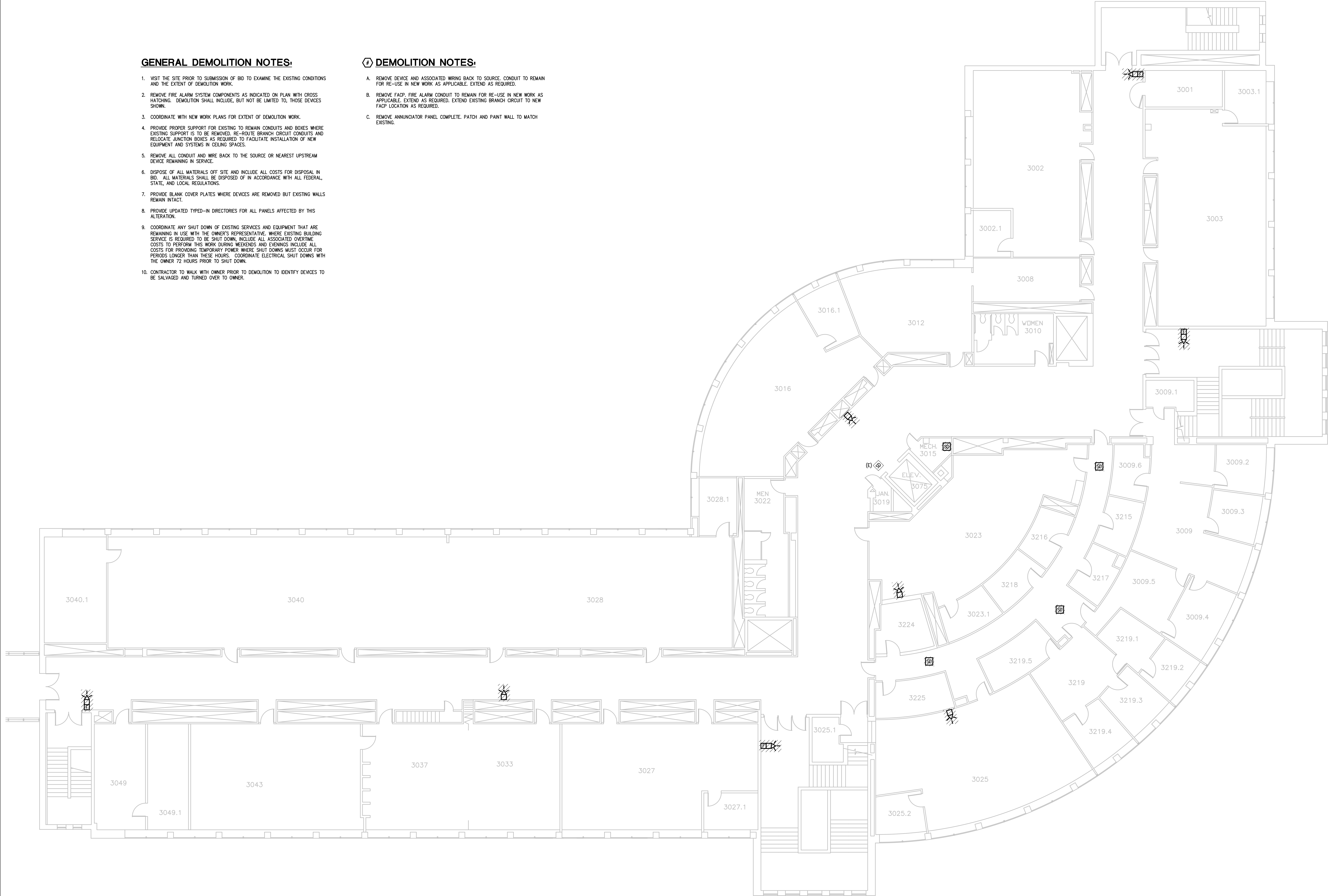


GENERAL DEMOLITION NOTES:

1. VISIT THE SITE PRIOR TO SUBMISSION OF BID TO EXAMINE THE EXISTING CONDITIONS AND THE EXTENT OF DEMOLITION WORK.
2. REMOVE FIRE ALARM SYSTEM COMPONENTS AS INDICATED ON PLAN WITH CROSS HATCHING. DEMOLITION SHALL INCLUDE, BUT NOT BE LIMITED TO, THOSE DEVICES SHOWN.
3. COORDINATE WITH NEW WORK PLANS FOR EXTENT OF DEMOLITION WORK.
4. PROVIDE PROPER SUPPORT FOR EXISTING TO REMAIN CONDUITS AND BOXES WHERE EXISTING SUPPORT IS TO BE REMOVED. RE-ROUTE BRANCH CIRCUIT CONDUITS AND RELOCATE JUNCTION BOXES AS REQUIRED TO FACILITATE INSTALLATION OF NEW EQUIPMENT AND SYSTEMS IN CEILING SPACES.
5. REMOVE ALL CONDUIT AND WIRE BACK TO THE SOURCE OR NEAREST UPSTREAM DEVICE REMAINING IN SERVICE.
6. DISPOSE OF ALL MATERIALS OFF SITE AND INCLUDE ALL COSTS FOR DISPOSAL IN BID. ALL MATERIALS SHALL BE DISPOSED OF IN ACCORDANCE WITH ALL FEDERAL, STATE, AND LOCAL REGULATIONS.
7. PROVIDE BLANK COVER PLATES WHERE DEVICES ARE REMOVED BUT EXISTING WALLS REMAIN INTACT.
8. PROVIDE UPDATED TYPED-IN DIRECTORIES FOR ALL PANELS AFFECTED BY THIS ALTERATION.
9. COORDINATE ANY SHUT DOWN OF EXISTING SERVICES AND EQUIPMENT THAT ARE REMAINING IN USE WITH THE OWNER'S REPRESENTATIVE. WHERE EXISTING BUILDING SERVICE IS REQUIRED TO BE SHUT DOWN, INCLUDE ALL ASSOCIATED OVERTIME COSTS TO PERFORM THIS WORK DURING WEEKENDS AND EVENINGS INCLUDE ALL COSTS FOR PROVIDING TEMPORARY POWER WHERE SHUT DOWNS MUST OCCUR FOR PERIODS LONGER THAN THESE HOURS. COORDINATE ELECTRICAL SHUT DOWNS WITH THE OWNER 72 HOURS PRIOR TO SHUT DOWN.
10. CONTRACTOR TO WALK WITH OWNER PRIOR TO DEMOLITION TO IDENTIFY DEVICES TO BE SALVAGED AND TURNED OVER TO OWNER.

DEMOLITION NOTES:

- A. REMOVE DEVICE AND ASSOCIATED WRING BACK TO SOURCE, CONDUIT TO REMAIN FOR RE-USE IN NEW WORK AS APPLICABLE. EXTEND AS REQUIRED.
- B. REMOVE FACP, FIRE ALARM CONDUIT TO REMAIN FOR RE-USE IN NEW WORK AS APPLICABLE. EXTEND AS REQUIRED. EXTEND EXISTING BRANCH CIRCUIT TO NEW FACP LOCATION AS REQUIRED.
- C. REMOVE ANNUNCIATOR PANEL COMPLETE. PATCH AND PAINT WALL TO MATCH EXISTING.



THIRD FLOOR ELECTRICAL DEMOLITION PLAN

SCALE: 1/8" = 1' - 0"

REVISION

REVISION

5145 Livonia, Suite 100
Livonia, MI 48150
Tel: 248-879-5595 Fax: 248-879-4007
www.PeterBassoAssociates.com
PEA Project No. 2014-079

Peter Basso Associates Inc.
CONSULTING ENGINEERS



PROJECT TITLE
WAYNE STATE UNIVERSITY
SCIENCE HALL FIRE ALARM
UPGRADES
WSU Project No.: 005-240912
5045 CASS, DETROIT, MI 48201

SHEET TITLE
THIRD FLOOR ELECTRICAL
DEMOLITION PLAN

DATE
04/28/14

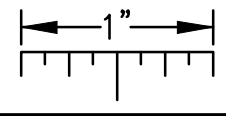
ISSUE
BIDS

SHEET No.

E13

g:\2014\2014-0119-00\Cad\2014-0119-E1-DP4.dwg, E14, 4/28/2014 8:32:47 AM, Brandon Mumm, Peter Basso Associates Inc.

THE FOLLOWING DIMENSION EQUALS
ONE INCH WHEN PRINTED TO SCALE.

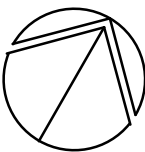
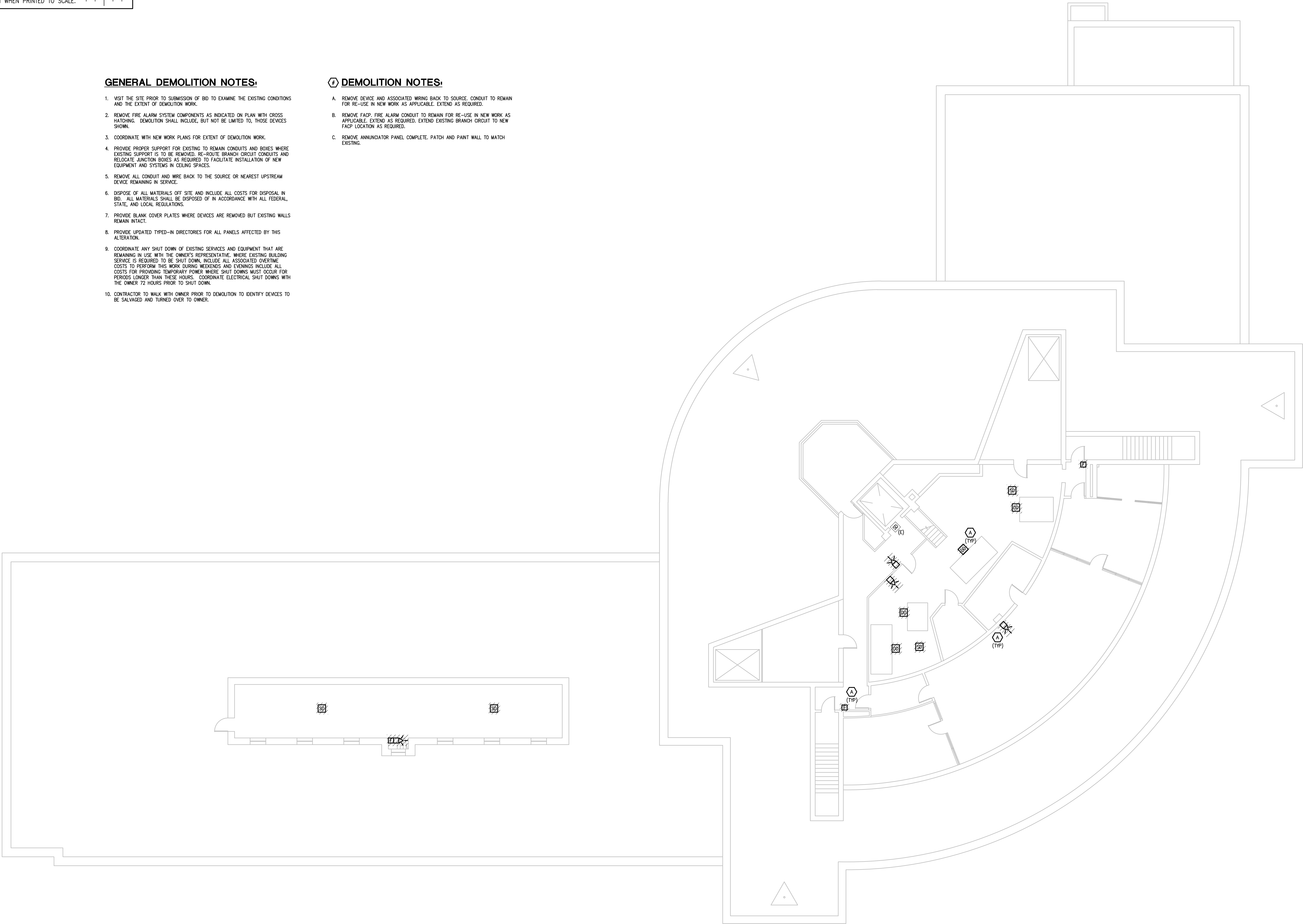


GENERAL DEMOLITION NOTES:

1. VISIT THE SITE PRIOR TO SUBMISSION OF BID TO EXAMINE THE EXISTING CONDITIONS AND THE EXTENT OF DEMOLITION WORK.
2. REMOVE FIRE ALARM SYSTEM COMPONENTS AS INDICATED ON PLAN WITH CROSS HATCHING. DEMOLITION SHALL INCLUDE, BUT NOT BE LIMITED TO, THOSE DEVICES SHOWN.
3. COORDINATE WITH NEW WORK PLANS FOR EXTENT OF DEMOLITION WORK.
4. PROVIDE PROPER SUPPORT FOR EXISTING TO REMAIN CONDUITS AND BOXES WHERE EXISTING SUPPORT IS TO BE REMOVED. RE-ROUTE BRANCH CIRCUIT CONDUITS AND RELOCATE JUNCTION BOXES AS REQUIRED TO FACILITATE INSTALLATION OF NEW EQUIPMENT AND SYSTEMS IN CEILING SPACES.
5. REMOVE ALL CONDUIT AND WIRE BACK TO THE SOURCE OR NEAREST UPSTREAM DEVICE REMAINING IN SERVICE.
6. DISPOSE OF ALL MATERIALS OFF SITE AND INCLUDE ALL COSTS FOR DISPOSAL IN BID. ALL MATERIALS SHALL BE DISPOSED OF IN ACCORDANCE WITH ALL FEDERAL, STATE, AND LOCAL REGULATIONS.
7. PROVIDE BLANK COVER PLATES WHERE DEVICES ARE REMOVED BUT EXISTING WALLS REMAIN INTACT.
8. PROVIDE UPDATED TYPED-IN DIRECTORIES FOR ALL PANELS AFFECTED BY THIS ALTERATION.
9. COORDINATE ANY SHUT DOWN OF EXISTING SERVICES AND EQUIPMENT THAT ARE REMAINING IN USE WITH THE OWNER'S REPRESENTATIVE. WHERE EXISTING BUILDING SERVICE IS REQUIRED TO BE SHUT DOWN, INCLUDE ALL ASSOCIATED OVERTIME COSTS TO PERFORM THIS WORK DURING WEEKENDS AND EVENINGS INCLUDE ALL COSTS FOR PROVIDING TEMPORARY POWER WHERE SHUT DOWNS MUST OCCUR FOR PERIODS LONGER THAN THESE HOURS. COORDINATE ELECTRICAL SHUT DOWNS WITH THE OWNER 72 HOURS PRIOR TO SHUT DOWN.
10. CONTRACTOR TO WALK WITH OWNER PRIOR TO DEMOLITION TO IDENTIFY DEVICES TO BE SALVAGED AND TURNED OVER TO OWNER.

DEMOLITION NOTES:

- A. REMOVE DEVICE AND ASSOCIATED WRING BACK TO SOURCE, CONDUIT TO REMAIN FOR RE-USE IN NEW WORK AS APPLICABLE. EXTEND AS REQUIRED.
- B. REMOVE FACP, FIRE ALARM CONDUIT TO REMAIN FOR RE-USE IN NEW WORK AS APPLICABLE. EXTEND AS REQUIRED. EXTEND EXISTING BRANCH CIRCUIT TO NEW FACP LOCATION AS REQUIRED.
- C. REMOVE ANNUNCIATOR PANEL COMPLETE. PATCH AND PAINT WALL TO MATCH EXISTING.



FOURTH FLOOR ELECTRICAL DEMOLITION PLAN
SCALE: 1/8" = 1' - 0"

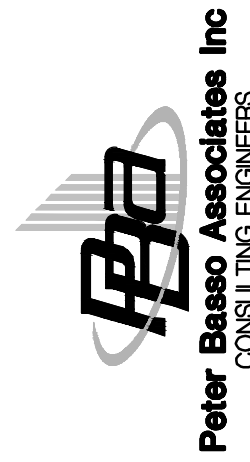
SHEET No.

ISSUE
BIDS

DATE
04/28/14

SHEET TITLE
FOURTH FLOOR ELECTRICAL
DEMOLITION PLAN

PROJECT TITLE
WAYNE STATE UNIVERSITY
SCIENCE HALL FIRE ALARM
UPGRADES
WSU Project No.: 005-240912
5045 CASS, DETROIT, MI 48201



5145 Livonia, Suite 100
Livonia, MI 48150
Tel: 248-879-5595 Fax: 248-879-4007
www.PeterBassoAssociates.com
PEA Project No. 2014-079

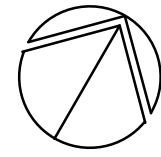
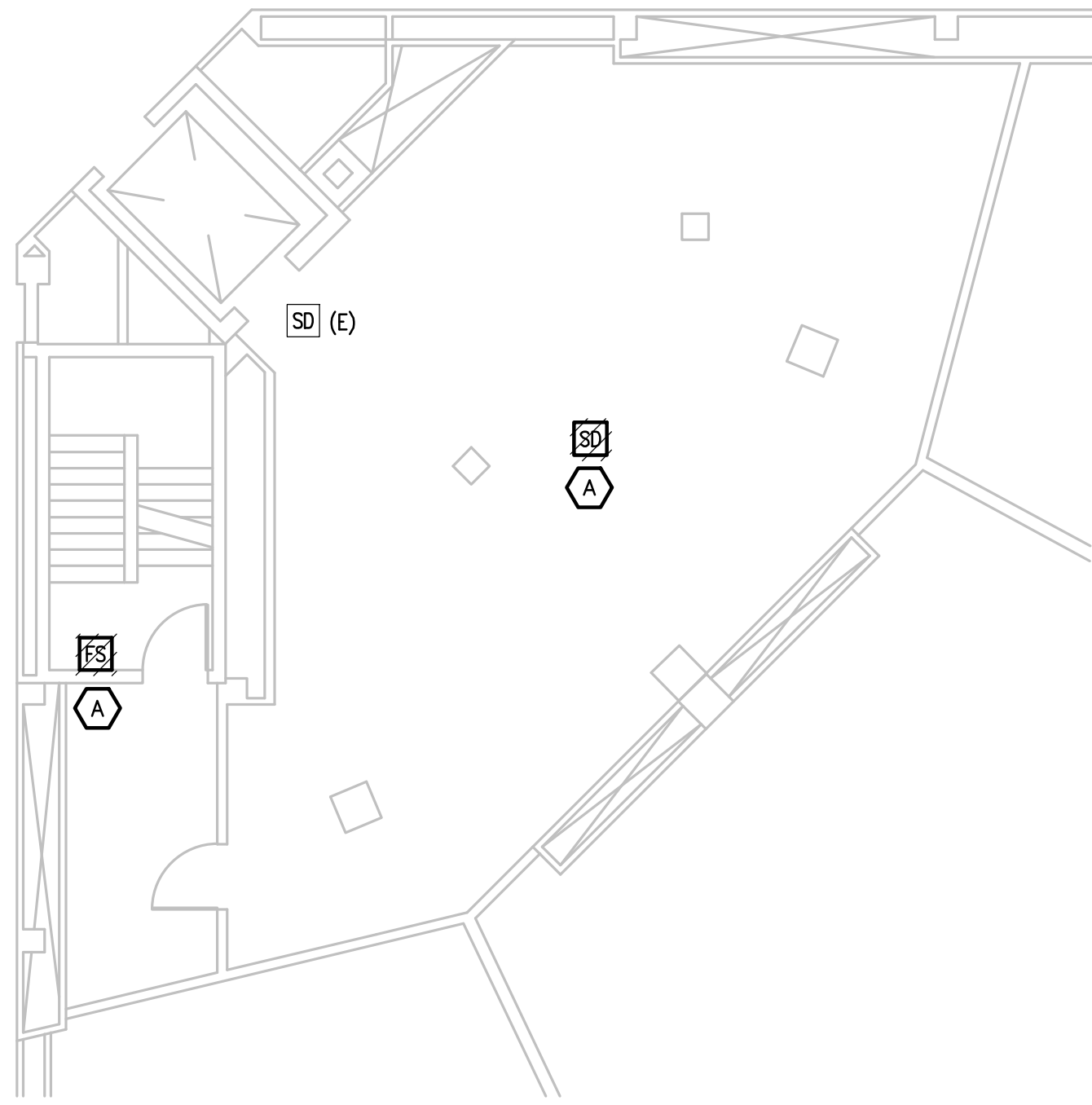
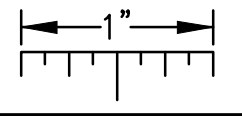
REVISION

REVISION

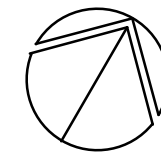
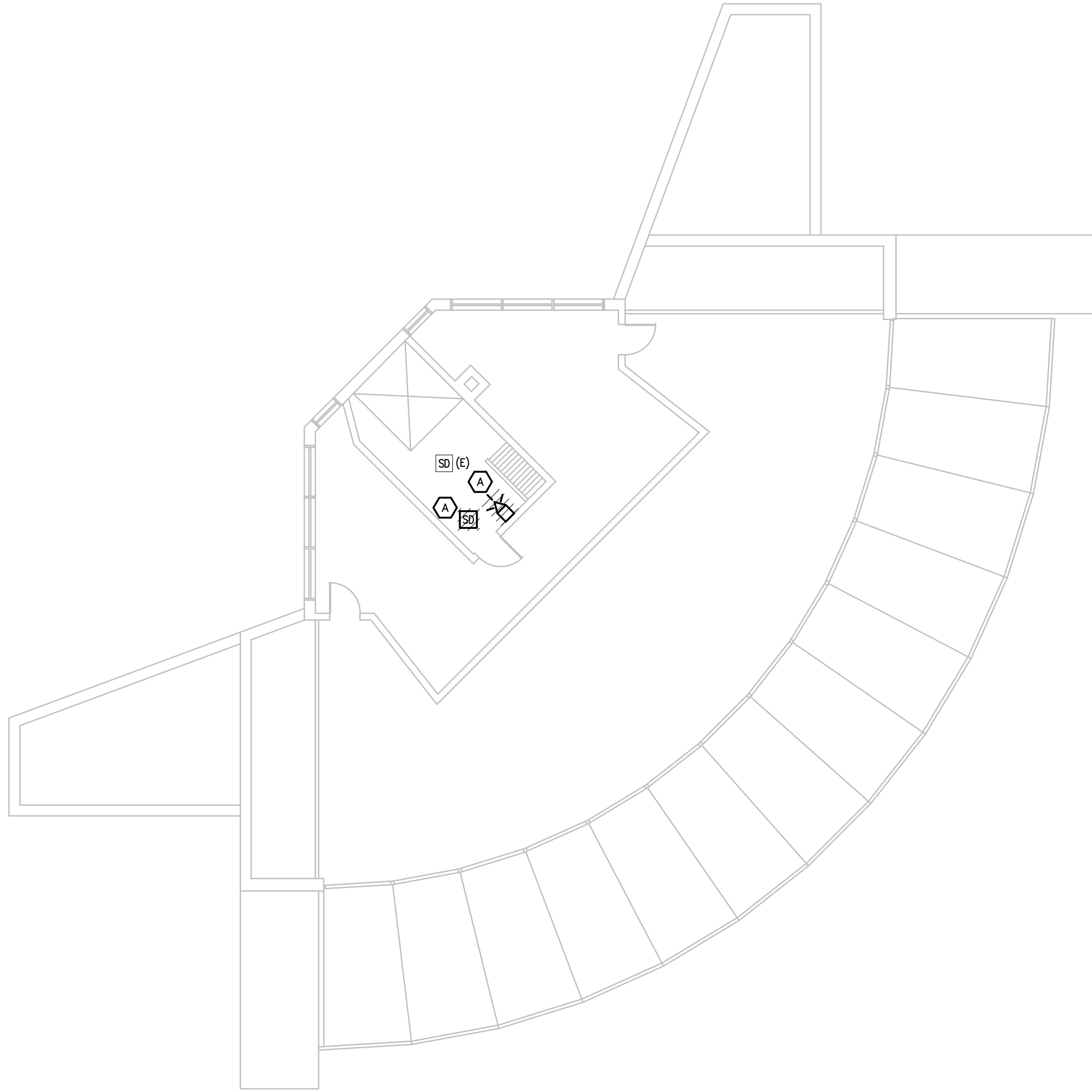
E1.4

g:\2014\2014-0119-00\Coat\2014-0119-E1-DP5.dwg, E15, 4/28/2014 9:25:57 AM, Brandon Mumm, Peter Basso Associates Inc.

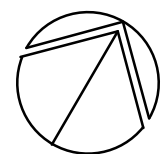
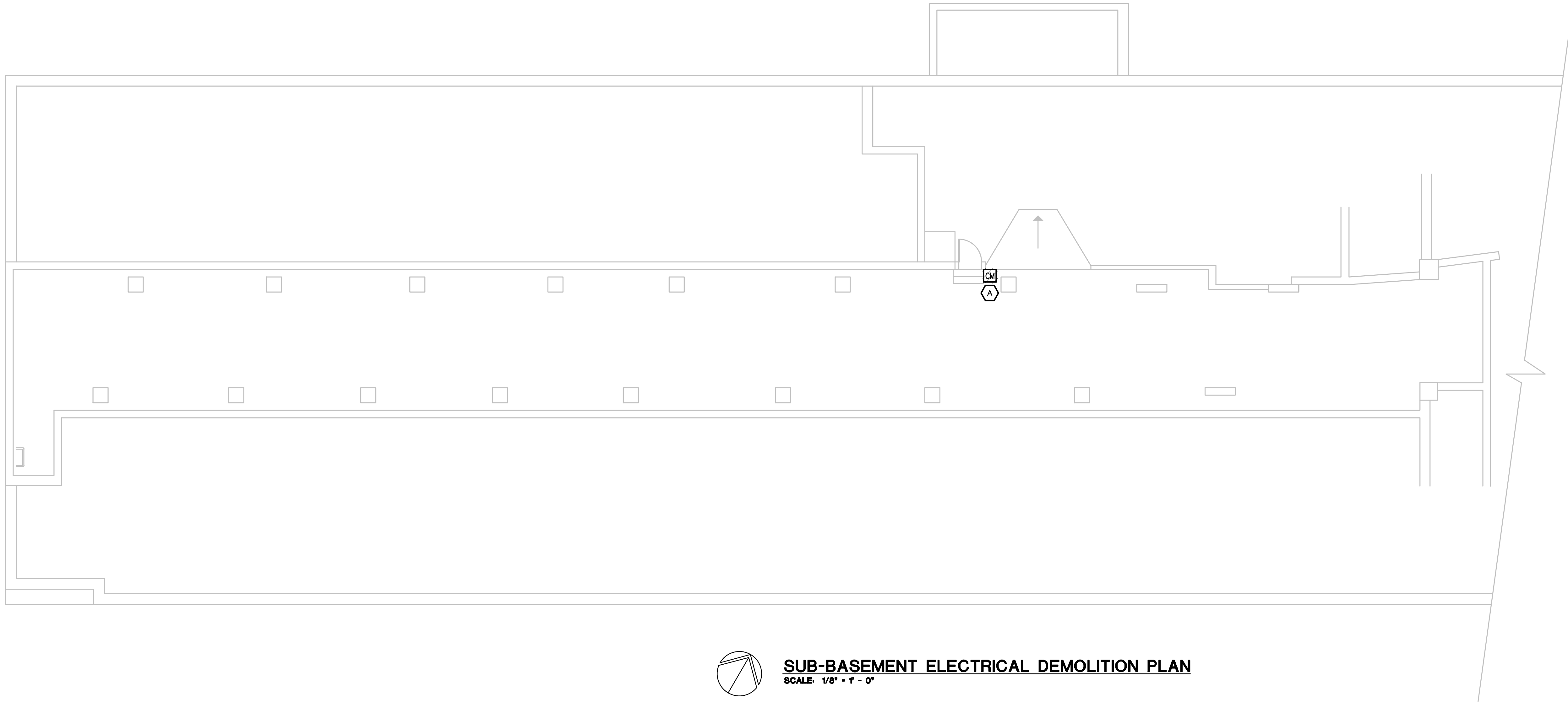
THE FOLLOWING DIMENSION EQUALS
ONE INCH WHEN PRINTED TO SCALE.



MEZZANINE ELECTRICAL DEMOLITION PLAN
SCALE: 1/8" = 1' - 0"



PENTHOUSE ELECTRICAL DEMOLITION PLAN
SCALE: 1/8" = 1' - 0"



SUB-BASEMENT ELECTRICAL DEMOLITION PLAN
SCALE: 1/8" = 1' - 0"

GENERAL DEMOLITION NOTES:

1. VISIT THE SITE PRIOR TO SUBMISSION OF BID TO EXAMINE THE EXISTING CONDITIONS AND THE EXTENT OF DEMOLITION WORK.
2. REMOVE FIRE ALARM SYSTEM COMPONENTS AS INDICATED ON PLAN WITH CROSS HATCHING. DEMOLITION SHALL INCLUDE, BUT NOT BE LIMITED TO, THOSE DEVICES SHOWN.
3. COORDINATE WITH NEW WORK PLANS FOR EXTENT OF DEMOLITION WORK.
4. PROVIDE PROPER SUPPORT FOR EXISTING TO REMAIN CONDUITS AND BOXES WHERE EXISTING SUPPORT IS TO BE REMOVED. RE-ROUTE BRANCH CIRCUIT CONDUITS AND RELOCATE JUNCTION BOXES AS REQUIRED TO FACILITATE INSTALLATION OF NEW EQUIPMENT AND SYSTEMS IN CEILING SPACES.
5. REMOVE ALL CONDUIT AND WIRE BACK TO THE SOURCE OR NEAREST UPSTREAM DEVICE REMAINING IN SERVICE.
6. DISPOSE OF ALL MATERIALS OFF SITE AND INCLUDE ALL COSTS FOR DISPOSAL IN BID. ALL MATERIALS SHALL BE DISPOSED OF IN ACCORDANCE WITH ALL FEDERAL, STATE, AND LOCAL REGULATIONS.
7. PROVIDE BLANK COVER PLATES WHERE DEVICES ARE REMOVED BUT EXISTING WALLS REMAIN INTACT.
8. PROVIDE UPDATED TYPED-IN DIRECTORIES FOR ALL PANELS AFFECTED BY THIS ALTERATION.
9. COORDINATE ANY SHUT DOWN OF EXISTING SERVICES AND EQUIPMENT THAT ARE REMAINING IN USE WITH THE OWNER'S REPRESENTATIVE. WHERE EXISTING BUILDING SERVICE IS REQUIRED TO BE SHUT DOWN, INCLUDE ALL ASSOCIATED OVERTIME COSTS TO PERFORM THIS WORK DURING WEEKENDS AND EVENINGS INCLUDE ALL COSTS FOR PROVIDING TEMPORARY POWER WHERE SHUT DOWNS MUST OCCUR FOR PERIODS LONGER THAN THESE HOURS. COORDINATE ELECTRICAL SHUT DOWNS WITH THE OWNER 72 HOURS PRIOR TO SHUT DOWN.
10. CONTRACTOR TO WALK WITH OWNER PRIOR TO DEMOLITION TO IDENTIFY DEVICES TO BE SALVAGED AND TURNED OVER TO OWNER.

DEMOLITION NOTES:

- A. REMOVE DEVICE AND ASSOCIATED WIRING BACK TO SOURCE. CONDUIT TO REMAIN FOR RE-USE IN NEW WORK AS APPLICABLE. EXTEND AS REQUIRED.
- B. REMOVE FACP. FIRE ALARM CONDUIT TO REMAIN FOR RE-USE IN NEW WORK AS APPLICABLE. EXTEND AS REQUIRED. EXTEND EXISTING BRANCH CIRCUIT TO NEW FACP LOCATION AS REQUIRED.
- C. REMOVE ANNUNCIATOR PANEL COMPLETE. PATCH AND PAINT WALL TO MATCH EXISTING.

REVISION

REVISION

5045 Livorno, Suite 100
Detroit, MI 48201
Tel: 248-579-5966 Fax: 248-579-4007
www.PeterBassoAssociates.com
PEA Project No.: 2014-0119

Peter Basso Associates Inc
CONSULTING ENGINEERS



PROJECT TITLE
WAYNE STATE UNIVERSITY
SCIENCE HALL FIRE ALARM
UPGRADES
WISU Project No.: 005-240912
5045 CASS, DETROIT, MI 48201

SHEET TITLE
MEZZANINE, PENTHOUSE AND
SUB-BASEMENT ELECTRICAL
DEMOLITION PLANS

DATE
04/28/14

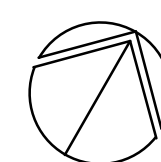
ISSUE
BIDS

SHEET No.

E15

1. THESE DRAWINGS REPRESENT THE GENERAL EXTENT AND ARRANGEMENT OF SYSTEMS, BUT ARE NOT TO BE CONSIDERED FABRICATION DRAWINGS. COORDINATE WITH OTHER TRADES, AND PROVIDE EACH SYSTEM COMPLETE, INCLUDING ALL NECESSARY COMPONENTS, FITTINGS, AND OFFSETS.
2. INSTALL SYSTEMS SUCH THAT REQUIRED CLEARANCE AND SERVICE ACCESS SPACE IS PROVIDED AROUND ALL MECHANICAL AND ELECTRICAL EQUIPMENT, AND AROUND ANY COMPONENTS WHICH REQUIRE SERVICE ACCESS.
3. COORDINATE AND PROVIDE ACCESS DOORS WITHIN NECESSIBLE CEILING, SHAFT, AND CHASE AREAS FOR ALL COMPONENTS WHICH REQUIRE SERVICE ACCESS.
4. PROVIDE SUPPLEMENTARY STEEL AS REQUIRED FOR THE PROPER SUPPORT OF ALL SYSTEMS.
5. PATCH AND PAINT CEILING AND WALLS TO MATCH EXISTING WHERE DEVICES HAVE BEEN REMOVED.
6. CUT, PATCH, AND PAINT CEILING AND WALLS AS REQUIRED TO FACILITATE NEW WORK.
7. SURFACE MOUNTING OF RACEWAY TO AS MINIMAL AS POSSIBLE. SURFACE MOUNTED CONDUIT/RACEWAYS TO BE PAINTED TO MATCH ADJACENT SURFACE.

1. EXTEND EXISTING FACP CONDUIT TO NEW FACP LOCATION WHERE APPLICABLE.
2. CONNECT EXISTING CO2 SUPPRESSION SYSTEM TO NEW FIRE ALARM SYSTEM.
3. CONNECT FIRE ALARM SYSTEM TO EXISTING SECURITY SYSTEM FOR SIGNAL TRANSMISSION TO REMOTE RECEIVING STATION. SECURITY SYSTEM VENDOR IS ELECTRONIC SECURITY SYSTEMS, INC. CONTACT TONY RNEUNEAPP AT (586) 756-8400 FOR SYSTEM TIE-IN AND COORDINATION.



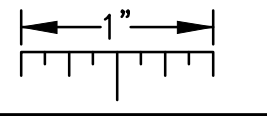
SCALE: 1/8" = 1' - 0"

E2.0

g:\2014\2014-0119-00\Cad\2014-0119-E2-EP0.dwg, E20, 4/28/2014 8:33:00 AM, Brandon Mumm, Peter Basso Associates Inc.

g:\2014\2014-0119-00\Coat\2014-0119-E2-EP1.dwg, E21, 4/28/2014 8:33:07 AM, Brandon Mumm, Peter Basso Associates Inc.

THE FOLLOWING DIMENSION EQUALS
ONE INCH WHEN PRINTED TO SCALE.

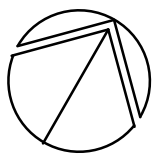
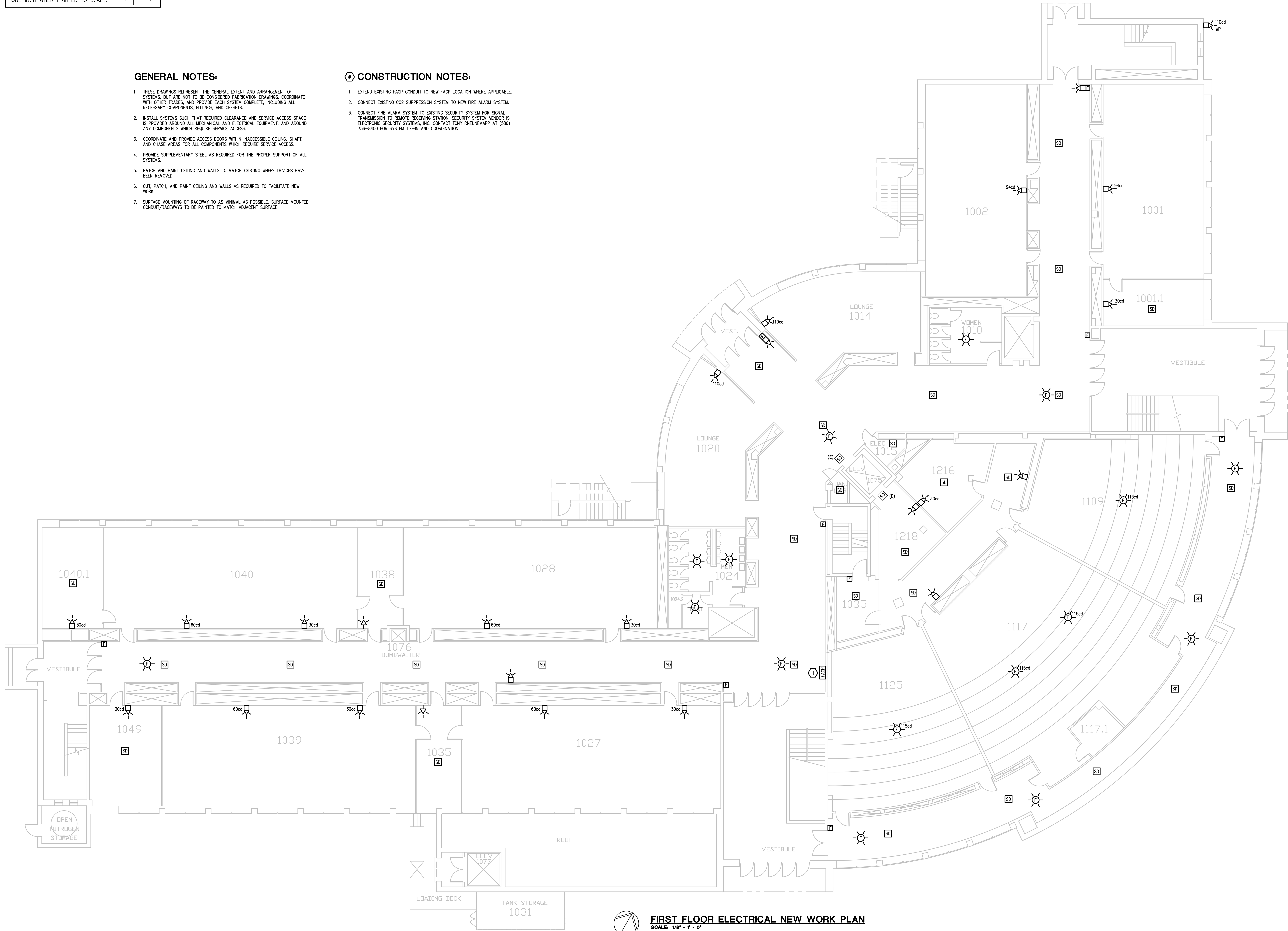


GENERAL NOTES:

1. THESE DRAWINGS REPRESENT THE GENERAL EXTENT AND ARRANGEMENT OF SYSTEMS, BUT ARE NOT TO BE CONSIDERED FABRICATION DRAWINGS. COORDINATE WITH OTHER TRADES, AND PROVIDE EACH SYSTEM COMPLETE, INCLUDING ALL NECESSARY COMPONENTS, FITTINGS, AND OFFSETS.
2. INSTALL SYSTEMS SUCH THAT REQUIRED CLEARANCE AND SERVICE ACCESS SPACE IS PROVIDED AROUND ALL MECHANICAL AND ELECTRICAL EQUIPMENT, AND AROUND ANY COMPONENTS WHICH REQUIRE SERVICE ACCESS.
3. COORDINATE AND PROVIDE ACCESS DOORS WITHIN INACCESSIBLE CEILING, SHAFT, AND CHASE AREAS FOR ALL COMPONENTS WHICH REQUIRE SERVICE ACCESS.
4. PROVIDE SUPPLEMENTARY STEEL AS REQUIRED FOR THE PROPER SUPPORT OF ALL SYSTEMS.
5. PATCH AND PAINT CEILING AND WALLS TO MATCH EXISTING WHERE DEVICES HAVE BEEN REMOVED.
6. CUT, PATCH, AND PAINT CEILING AND WALLS AS REQUIRED TO FACILITATE NEW WORK.
7. SURFACE MOUNTING OF RACEWAY TO AS MINIMAL AS POSSIBLE. SURFACE MOUNTED CONDUIT/RACEWAYS TO BE PAINTED TO MATCH ADJACENT SURFACE.

CONSTRUCTION NOTES:

1. EXTEND EXISTING FACP CONDUIT TO NEW FACP LOCATION WHERE APPLICABLE.
2. CONNECT EXISTING CO2 SUPPRESSION SYSTEM TO NEW FIRE ALARM SYSTEM.
3. CONNECT FIRE ALARM SYSTEM TO EXISTING SECURITY SYSTEM FOR SIGNAL TRANSMISSION TO REMOTE RECEIVING STATION. SECURITY SYSTEM VENDOR IS ELECTRONIC SECURITY SYSTEMS, INC. CONTACT TONY RNEJEMARPP AT (586) 756-8400 FOR SYSTEM TIE-IN AND COORDINATION.



FIRST FLOOR ELECTRICAL NEW WORK PLAN

SCALE: 1/8" = 1' - 0"

REVISION

REVISION

5145 Livonia, Suite 100
Livonia, MI 48150
Tel: 248-879-5966 Fax: 248-879-4007
www.peterbassoassociates.com
PEA Project No. 2014-0119

Peter Basso Associates Inc.
CONSULTING ENGINEERS

WAYNE STATE UNIVERSITY

PROJECT TITLE
**WAYNE STATE UNIVERSITY
SCIENCE HALL FIRE ALARM
UPGRADES**
WSU Project No.: 005-240912
5045 CASS, DETROIT, MI 48201

SHEET TITLE
**FIRST FLOOR ELECTRICAL
NEW WORK PLAN**

DATE
04/28/14

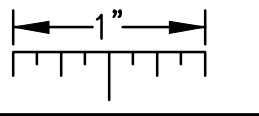
ISSUE
BIDS

SHEET No.

E2.1

g:\2014\2014-0119-00\Coat\2014-0119-E2-EP2.dwg, E22, 4/28/2014 8:33:16 AM, Brandon Mumm, Peter Basso Associates Inc.

THE FOLLOWING DIMENSION EQUALS
ONE INCH WHEN PRINTED TO SCALE.

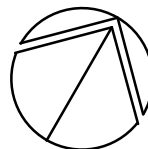
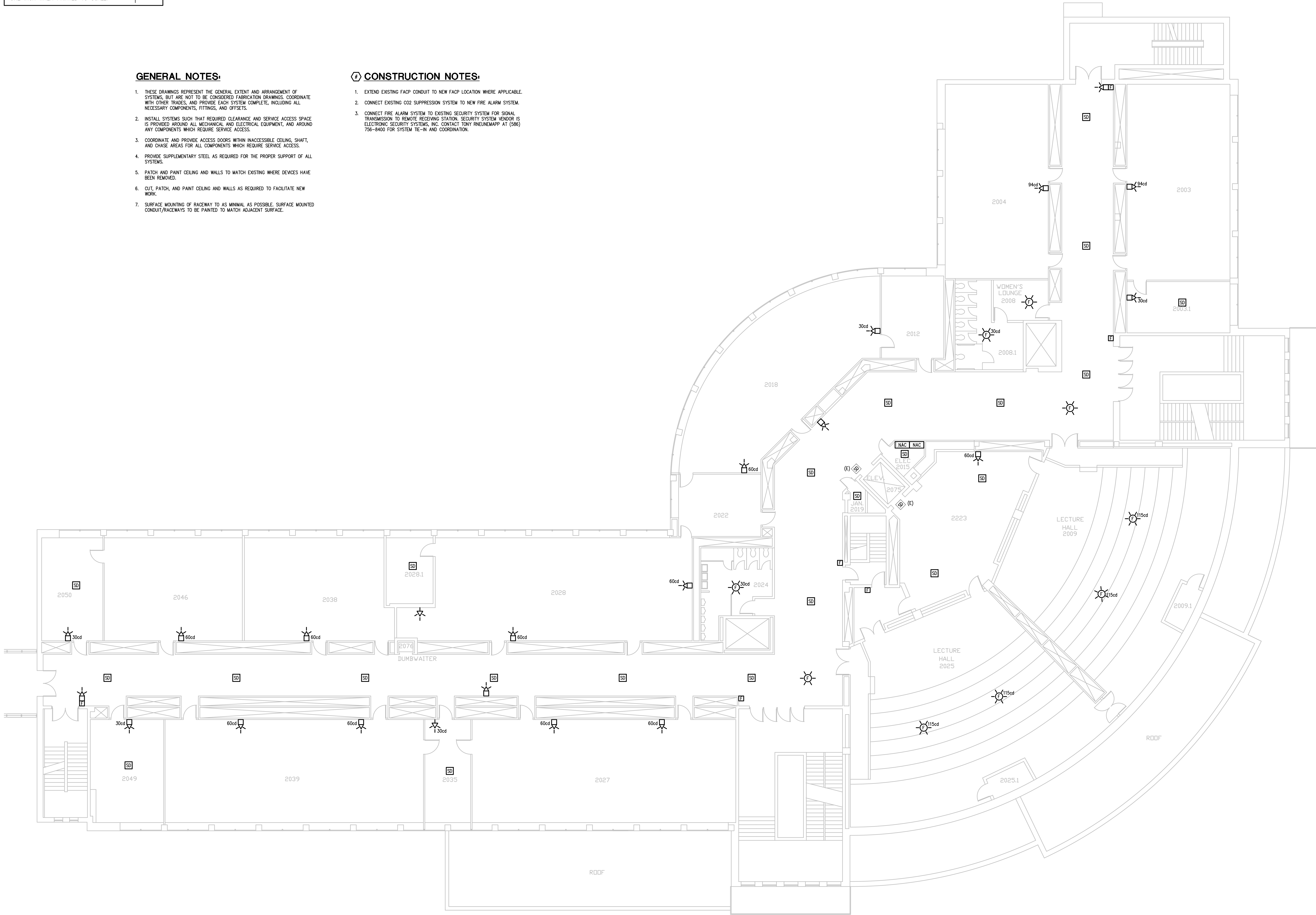


GENERAL NOTES:

1. THESE DRAWINGS REPRESENT THE GENERAL EXTENT AND ARRANGEMENT OF SYSTEMS, BUT ARE NOT TO BE CONSIDERED FABRICATION DRAWINGS. COORDINATE WITH OTHER TRADES, AND PROVIDE EACH SYSTEM COMPLETE, INCLUDING ALL NECESSARY COMPONENTS, FITTINGS, AND OFFSETS.
2. INSTALL SYSTEMS SUCH THAT REQUIRED CLEARANCE AND SERVICE ACCESS SPACE IS PROVIDED AROUND ALL MECHANICAL AND ELECTRICAL EQUIPMENT, AND AROUND ANY COMPONENTS WHICH REQUIRE SERVICE ACCESS.
3. COORDINATE AND PROVIDE ACCESS DOORS WITHIN INACCESSIBLE CEILING, SHAFT, AND CHASE AREAS FOR ALL COMPONENTS WHICH REQUIRE SERVICE ACCESS.
4. PROVIDE SUPPLEMENTARY STEEL AS REQUIRED FOR THE PROPER SUPPORT OF ALL SYSTEMS.
5. PATCH AND PAINT CEILING AND WALLS TO MATCH EXISTING WHERE DEVICES HAVE BEEN REMOVED.
6. CUT, PATCH, AND PAINT CEILING AND WALLS AS REQUIRED TO FACILITATE NEW WORK.
7. SURFACE MOUNTING OF RACEWAY TO AS MINIMAL AS POSSIBLE. SURFACE MOUNTED CONDUIT/RACEWAYS TO BE PAINTED TO MATCH ADJACENT SURFACE.

CONSTRUCTION NOTES:

1. EXTEND EXISTING FACP CONDUIT TO NEW FACP LOCATION WHERE APPLICABLE.
2. CONNECT EXISTING CO2 SUPPRESSION SYSTEM TO NEW FIRE ALARM SYSTEM.
3. CONNECT FIRE ALARM SYSTEM TO EXISTING SECURITY SYSTEM FOR SIGNAL TRANSMISSION TO REMOTE RECEIVING STATION. SECURITY SYSTEM VENDOR IS ELECTRONIC SECURITY SYSTEMS, INC. CONTACT TONY RNEJNEHARP AT (586) 756-8400 FOR SYSTEM TIE-IN AND COORDINATION.



SECOND FLOOR ELECTRICAL NEW WORK PLAN

SCALE: 1/8" = 1' - 0"

REVISION

REVISION

5145 Livonia, Suite 100
Livonia, MI 48150
Tel: 248-879-5966 Fax: 248-879-4007
www.peterbassoassociates.com
PEA Project No. 2014-0119

Peter Basso Associates Inc
CONSULTING ENGINEERS



PROJECT TITLE
**WAYNE STATE UNIVERSITY
SCIENCE HALL FIRE ALARM
UPGRADES**
WSU Project No.: 005-240912
5045 CASS, DETROIT, MI 48201

SHEET TITLE
**SECOND FLOOR ELECTRICAL
NEW WORK PLAN**

DATE
04/28/14

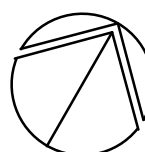
ISSUE
BIDS

SHEET No.

E2.2

1. THESE DRAWINGS REPRESENT THE GENERAL EXTENT AND ARRANGEMENT OF SYSTEMS, BUT ARE NOT TO BE CONSIDERED FABRICATION DRAWINGS. COORDINATE WITH OTHER TRADES, AND PROVIDE EACH SYSTEM COMPLETE, INCLUDING ALL NECESSARY COMPONENTS, FITTINGS, AND OFFSETS.
2. INSTALL SYSTEMS SUCH THAT REQUIRED CLEARANCE AND SERVICE ACCESS SPACE IS PROVIDED AROUND ALL MECHANICAL AND ELECTRICAL EQUIPMENT, AND AROUND ANY COMPONENTS WHICH REQUIRE SERVICE ACCESS.
3. COORDINATE AND PROVIDE ACCESS DOORS WITHIN INACCESSIBLE CEILING, SHAFT, AND CHASE AREAS FOR ALL COMPONENTS WHICH REQUIRE SERVICE ACCESS.
4. PROVIDE SUPPLEMENTARY STEEL AS REQUIRED FOR THE PROPER SUPPORT OF ALL SYSTEMS.
5. PATCH AND PAINT CEILING AND WALLS TO MATCH EXISTING WHERE DEVICES HAVE BEEN REMOVED.
6. CUT, PATCH, AND PAINT CEILING AND WALLS AS REQUIRED TO FACILITATE NEW WORK.
7. SURFACE MOUNTING OF RACEWAY TO AS MINIMAL AS POSSIBLE. SURFACE MOUNTED CONDUIT/RACEWAYS TO BE PAINTED TO MATCH ADJACENT SURFACE.

1. EXTEND EXISTING FACP CONDUIT TO NEW FACP LOCATION WHERE APPLICABLE.
2. CONNECT EXISTING CO2 SUPPRESSION SYSTEM TO NEW FIRE ALARM SYSTEM.
3. CONNECT FIRE ALARM SYSTEM TO EXISTING SECURITY SYSTEM FOR SIGNAL TRANSMISSION TO REMOTE RECEIVING STATION. SECURITY SYSTEM VENDOR IS ELECTRONIC SECURITY SYSTEMS, INC. CONTACT TONY RNEUNEAPP AT (586) 756-8400 FOR SYSTEM TIE-IN AND COORDINATION.

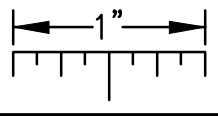


SCALE: 1/8" = 1' - 0"

E2.3

g:\2014\2014-0119-00\Cad\2014-0119-E2-EP4.dwg, E24, 4/28/2014 8:33:30 AM, Brandon Mumm, Peter Basso Associates Inc.

THE FOLLOWING DIMENSION EQUALS
ONE INCH WHEN PRINTED TO SCALE.

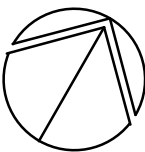
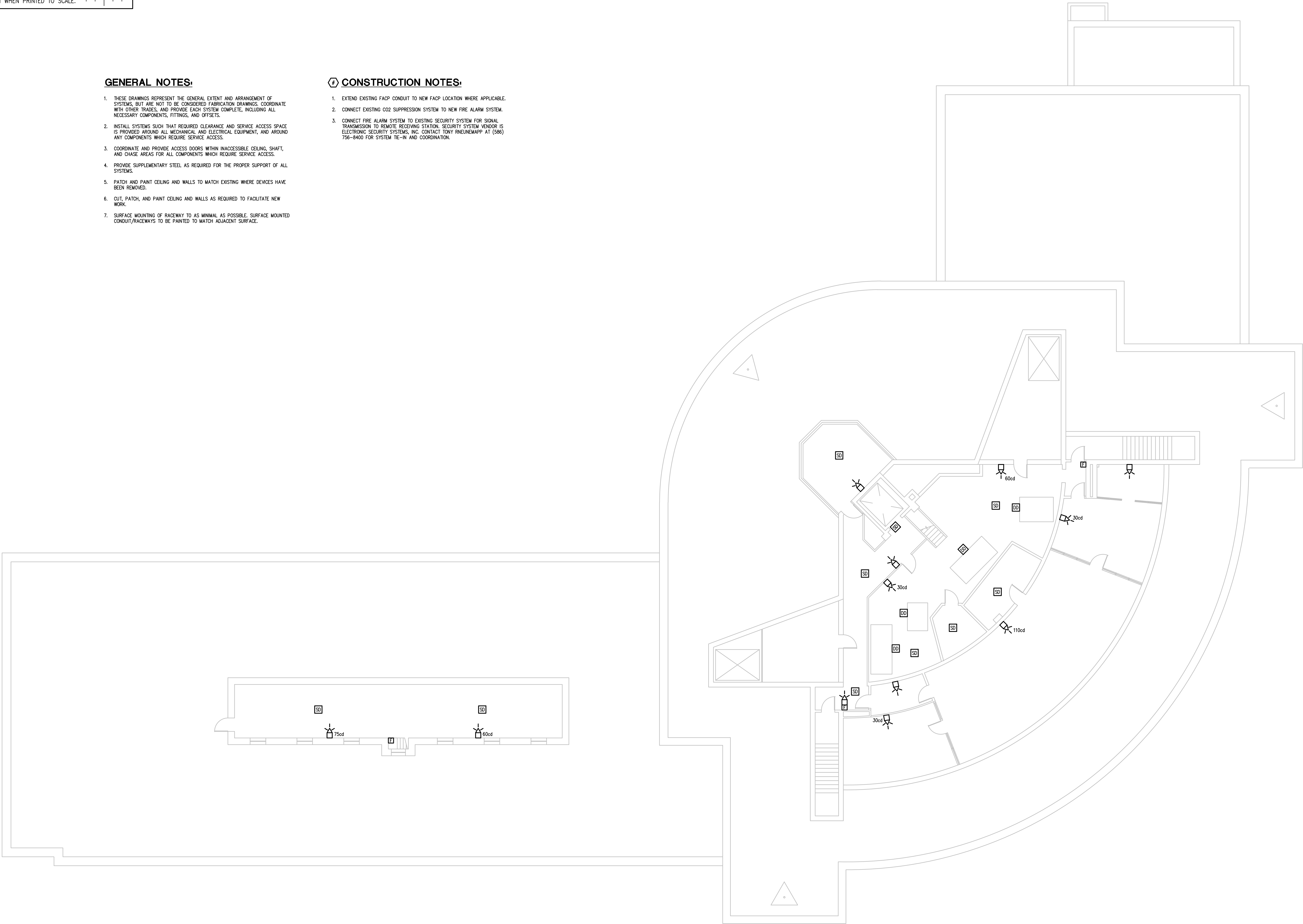


GENERAL NOTES:

1. THESE DRAWINGS REPRESENT THE GENERAL EXTENT AND ARRANGEMENT OF SYSTEMS, BUT ARE NOT TO BE CONSIDERED FABRICATION DRAWINGS. COORDINATE WITH OTHER TRADES, AND PROVIDE EACH SYSTEM COMPLETE, INCLUDING ALL NECESSARY COMPONENTS, FITTINGS, AND OFFSETS.
2. INSTALL SYSTEMS SUCH THAT REQUIRED CLEARANCE AND SERVICE ACCESS SPACE IS PROVIDED AROUND ALL MECHANICAL AND ELECTRICAL EQUIPMENT, AND AROUND ANY COMPONENTS WHICH REQUIRE SERVICE ACCESS.
3. COORDINATE AND PROVIDE ACCESS DOORS WITHIN INACCESSIBLE CEILING, SHAFT, AND CHASE AREAS FOR ALL COMPONENTS WHICH REQUIRE SERVICE ACCESS.
4. PROVIDE SUPPLEMENTARY STEEL AS REQUIRED FOR THE PROPER SUPPORT OF ALL SYSTEMS.
5. PATCH AND PAINT CEILING AND WALLS TO MATCH EXISTING WHERE DEVICES HAVE BEEN REMOVED.
6. CUT, PATCH, AND PAINT CEILING AND WALLS AS REQUIRED TO FACILITATE NEW WORK.
7. SURFACE MOUNTING OF RACEWAY TO AS MINIMAL AS POSSIBLE. SURFACE MOUNTED CONDUIT/RACEWAYS TO BE PAINTED TO MATCH ADJACENT SURFACE.

CONSTRUCTION NOTES:

1. EXTEND EXISTING FACP CONDUIT TO NEW FACP LOCATION WHERE APPLICABLE.
2. CONNECT EXISTING CO2 SUPPRESSION SYSTEM TO NEW FIRE ALARM SYSTEM.
3. CONNECT FIRE ALARM SYSTEM TO EXISTING SECURITY SYSTEM FOR SIGNAL TRANSMISSION TO REMOTE RECEIVING STATION. SECURITY SYSTEM VENDOR IS ELECTRONIC SECURITY SYSTEMS, INC. CONTACT TONY RNEJEMARPP AT (586) 756-8400 FOR SYSTEM TIE-IN AND COORDINATION.



FOURTH FLOOR ELECTRICAL NEW WORK PLAN
SCALE: 1/8" = 1' - 0"

SHEET No.

ISSUE
BIDS

DATE
04/28/14

SHEET TITLE
FOURTH FLOOR ELECTRICAL
NEW WORK PLAN

PROJECT TITLE
WAYNE STATE UNIVERSITY
SCIENCE HALL FIRE ALARM
UPGRADES
WSU Project No.: 005-240912
5045 CASS, DETROIT, MI 48201



5045 Livonia, Suite 100
Livonia, MI 48150
Tel: 248-679-5966 Fax: 248-679-4007
www.PeterBassoAssociates.com
PEA Project No. 2014-0119

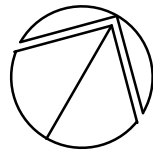
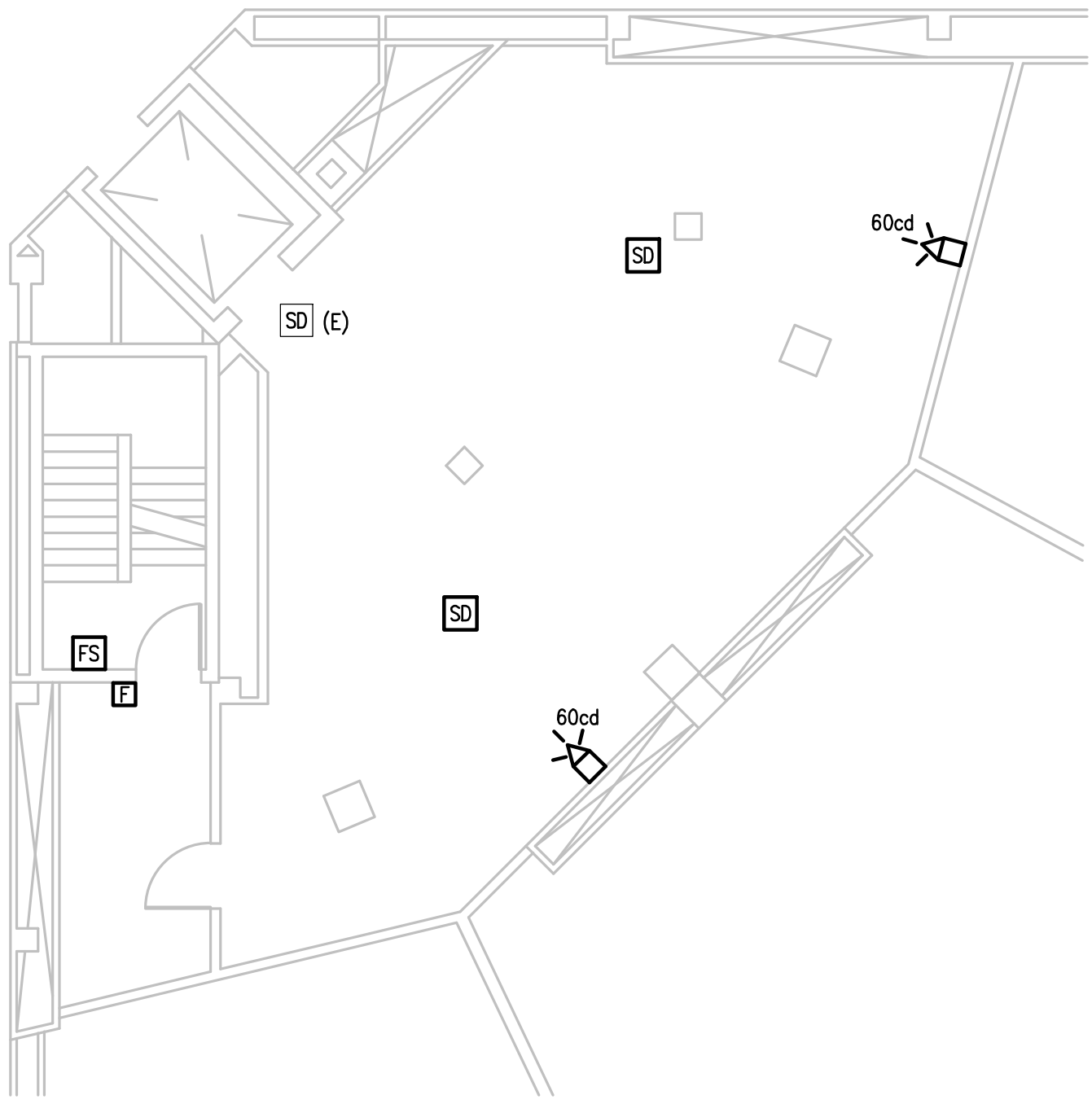
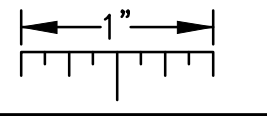
REVISION

REVISION

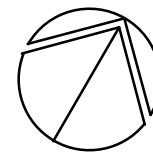
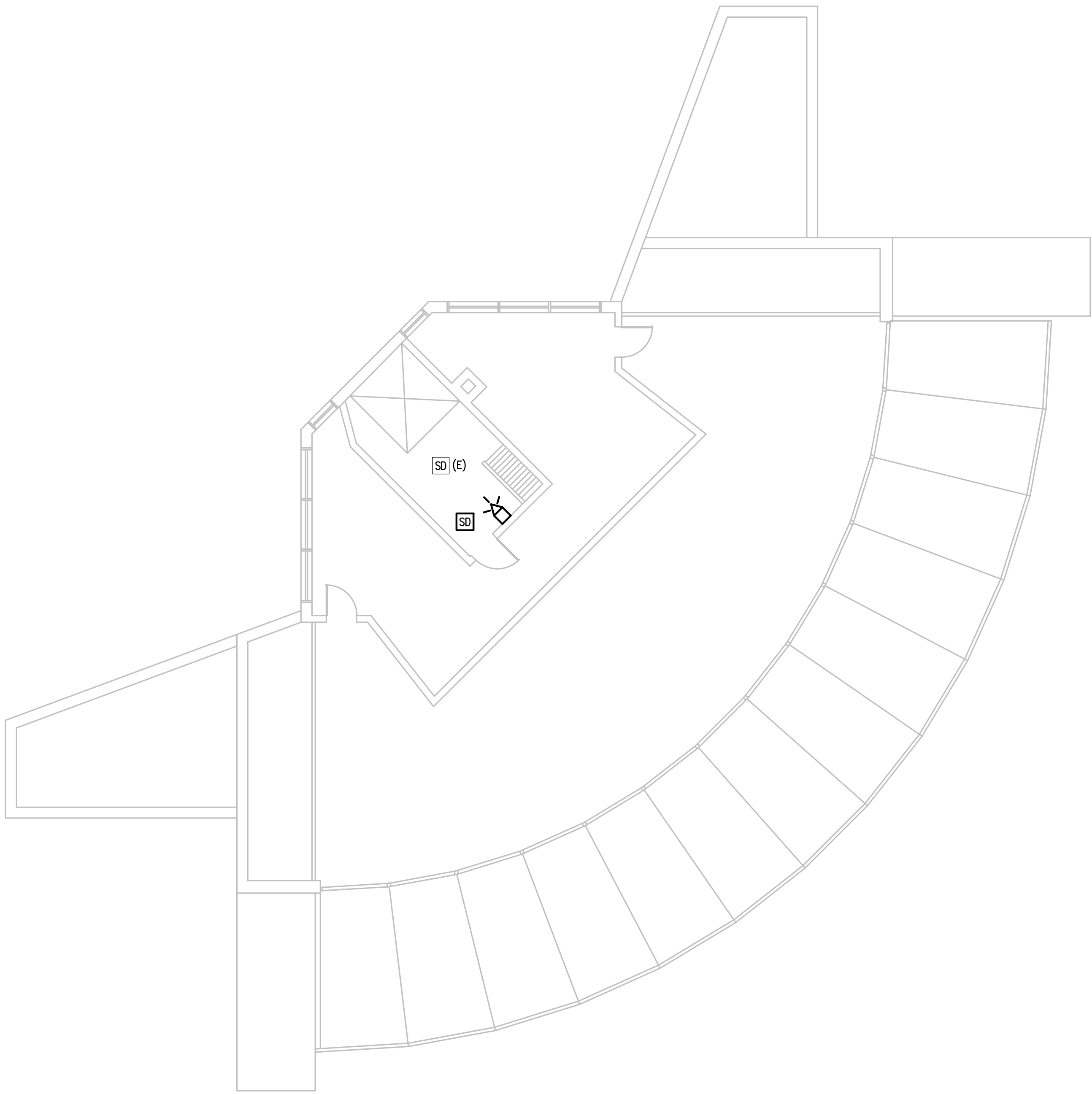
E2.4

g:\2014\2014-0119-00\Coa\2014-0119-E2-EP5.dwg, E25, 4/28/2014 9:26:04 AM, Brandon Mumm, Peter Basso Associates Inc.

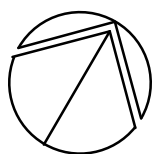
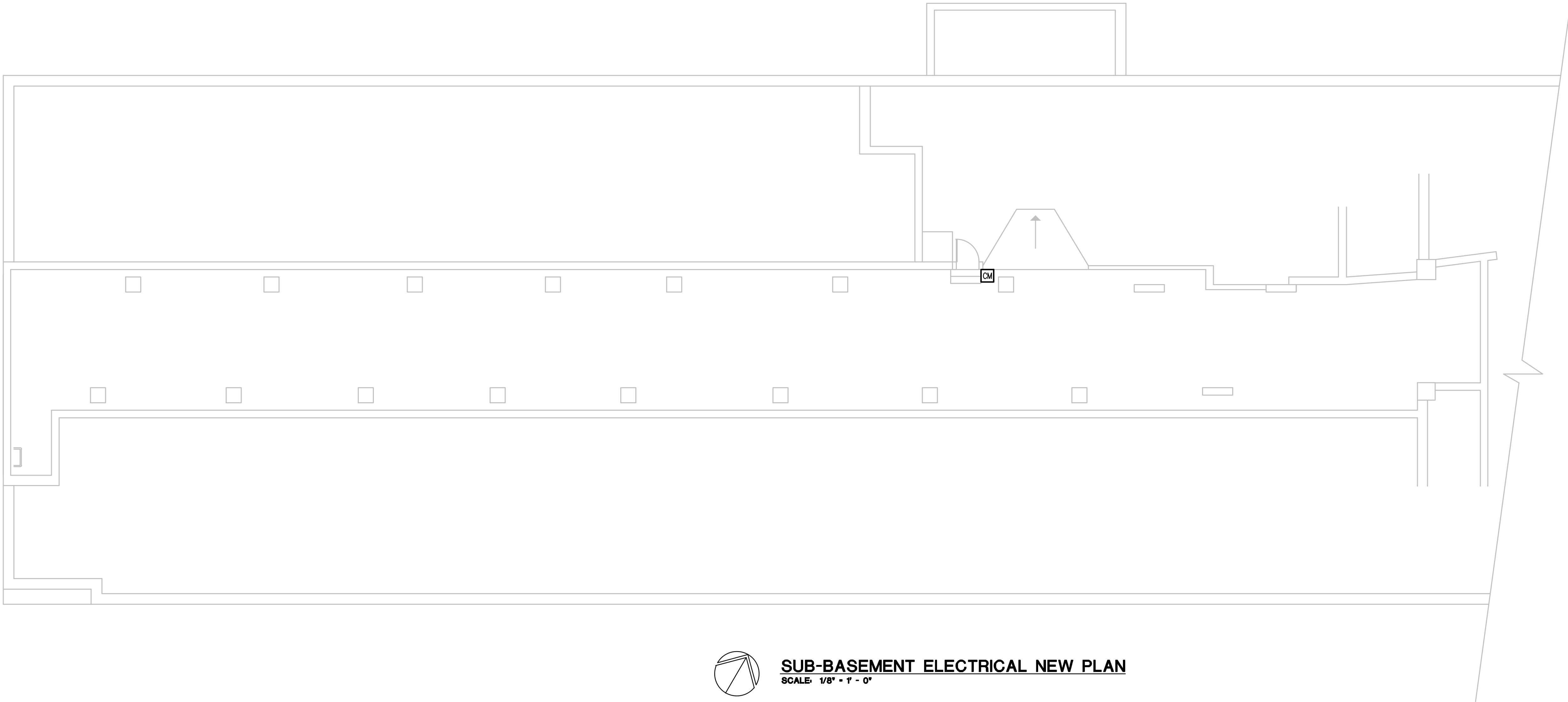
THE FOLLOWING DIMENSION EQUALS
ONE INCH WHEN PRINTED TO SCALE.



MEZZANINE ELECTRICAL NEW PLAN
SCALE: 1/8" = 1' - 0"



PENTHOUSE ELECTRICAL NEW PLAN
SCALE: 1/8" = 1' - 0"



SUB-BASEMENT ELECTRICAL NEW PLAN
SCALE: 1/8" = 1' - 0"

GENERAL NOTES:

1. THESE DRAWINGS REPRESENT THE GENERAL EXTENT AND ARRANGEMENT OF SYSTEMS, BUT ARE NOT TO BE CONSIDERED FABRICATION DRAWINGS. COORDINATE WITH OTHER TRADES, AND PROVIDE EACH SYSTEM COMPLETE, INCLUDING ALL NECESSARY COMPONENTS, FITTINGS, AND OFFSETS.
2. INSTALL SYSTEMS SUCH THAT REQUIRED CLEARANCE AND SERVICE ACCESS SPACE IS PROVIDED AROUND ALL MECHANICAL AND ELECTRICAL EQUIPMENT, AND AROUND ANY COMPONENTS WHICH REQUIRE SERVICE ACCESS.
3. COORDINATE AND PROVIDE ACCESS DOORS WITHIN INACCESSIBLE CEILING, SHAFT, AND CHASE AREAS FOR ALL COMPONENTS WHICH REQUIRE SERVICE ACCESS.
4. PROVIDE SUPPLEMENTARY STEEL AS REQUIRED FOR THE PROPER SUPPORT OF ALL SYSTEMS.
5. PATCH AND PAINT CEILING AND WALLS TO MATCH EXISTING WHERE DEVICES HAVE BEEN REMOVED.
6. CUT, PATCH, AND PAINT CEILING AND WALLS AS REQUIRED TO FACILITATE NEW WORK.
7. SURFACE MOUNTING OF RACEWAY TO AS MINIMAL AS POSSIBLE. SURFACE MOUNTED CONDUIT/RACEWAYS TO BE PAINTED TO MATCH ADJASANT SURFACE.

CONSTRUCTION NOTES:

1. EXTEND EXISTING FACP CONDUIT TO NEW FACP LOCATION WHERE APPLICABLE.
2. CONNECT EXISTING CO2 SUPPRESSION SYSTEM TO NEW FIRE ALARM SYSTEM.
3. CONNECT FIRE ALARM SYSTEM TO EXISTING SECURITY SYSTEM FOR SIGNAL TRANSMISSION TO REMOTE RECEIVING STATION. SECURITY SYSTEM VENDOR IS ELECTRONIC SECURITY SYSTEMS, INC. CONTACT TONY RNEUNEMAPP AT (586) 756-8400 FOR SYSTEM TIE-IN AND COORDINATION.

REVISION

REVISION

5145 Livonia, Suite 100
Livonia, MI 48150
Tel: 248-879-5966 Fax: 248-879-4707
www.PeterBassoAssociates.com
PEBA Project No. 2014-0119

Peter Basso Associates Inc.
CONSULTING ENGINEERS



PROJECT TITLE
WAYNE STATE UNIVERSITY
SCIENCE HALL FIRE ALARM
UPGRADES
WISU Project No.: 005-240912
5045 CASS, DETROIT, MI 48201

SHEET TITLE
MEZZANINE, PENTHOUSE AND
SUB-BASEMENT ELECTRICAL
NEW WORK PLANS

DATE
04/28/14
ISSUE
BIDS

SHEET No.

E2.5