

Title:	Cover Page
BL-01	01/27/2016

**WAYNE STATE
UNIVERSITY**

Wayne State University
Design & Construction Services
WSU Project: Blue Lights-Athletic Campus
WSU Project Number: 080-275368

General Notes:

- 1-Contractor to provide three (3) years warranty on products and labor
- 2-WSU will provide camera's licenses
- 3-All pathways to be field verify by the contractor
- 4-All work shall adhere to the Wayne State University standards for communications infrastructure located at <https://computing.wayne.edu/docs/wsu-communications-standards-pdf>

Plan Notes-New Work:

- 1-Prior to excavation verify location of any existing underground utilities.
- 2-All underground conduits shall be rigid PVC and installed at 36" below finish grade. Transition to metal conduit before entering the building.
- 3-Contractor shall verify the conduit entry size with manufacture. Provide adapters as required to accommodate installation.
- 4-Contractor is responsible for performing voltage drop calculations and increase size wire as necessary.
- 5-Contractor to coordinate exact location with owner's project manager. Phone unit to be PLC-8 Non-Rusting Stainless steel column 11" square with radius corner.
- 6-Install concrete foundation 24" DIA x 42" DEEP with (4) 5/8"x16" bolts. Reinforce pier with (6) #5 vertical and #3 12 ties.
- 7-Stanchion approved model: PLC-8A/ACA powder coated midnight blue with white emergency labels.
- 8-The phone line and fiber should be in a separate conduit.
- 9-The blue light location are to be ADA accessible.
- 10-All conduits shall be 1" minimum.

Scope of Work:**Blue Light 1:**

- 1-Remove the existing blue light and emergency phone that are mounted at the North West corner of Matthaei building. All equipment to be turned over to WSU-Public Safety. The power and data lines should be removed all the way back to their source.
- 2-Provide and install the new stanchion per the drawings (BL-04)
- 3-Provide and install camera model: Q-6000-E & Q6045 MK II per the drawings
- 4-Run a copper wire from the stanchion to women's softball locker room (099)
- 5-Relocate and extend the existing telephone and modify it to the new location.
- 6-The existing panel to be turned over to WSU-C&IT
- 7-The contractor shall patch and paint the existing phone location
- 8-Terminate and test all cables
- 9-Test and adjust all cameras

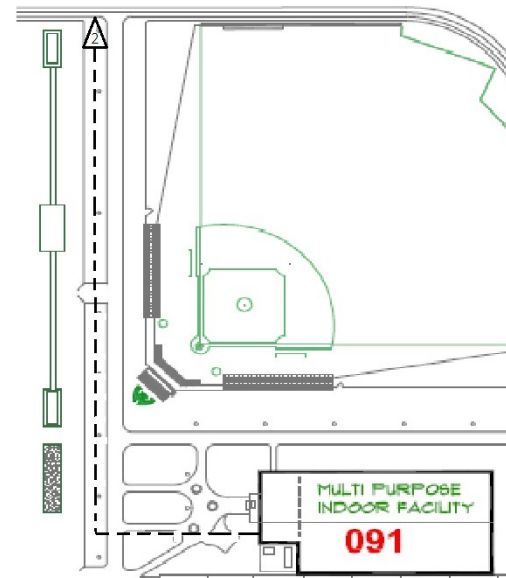
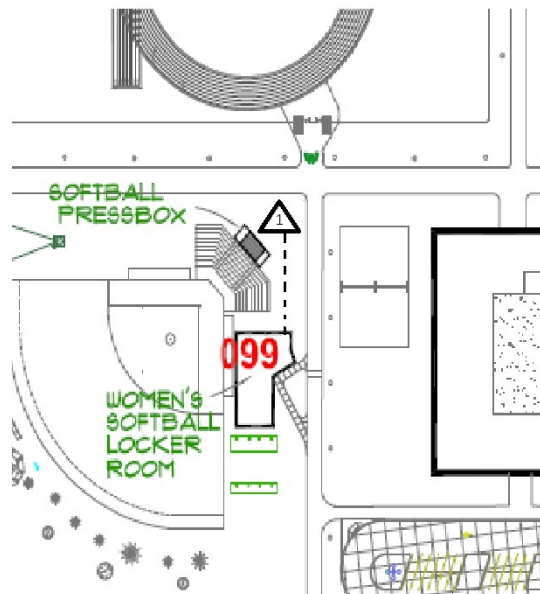
Blue Light 2:

- 1-Run a new phone line per the drawings
- 2-Provide and install the new stanchion per the drawings
- 3-Provide and install camera model: Q-6000-E & Q6045 MK II per the drawings
- 4-Run the Fiber cable from the stanchion to Athletic multipurpose building (091)
- 5-Terminate and test all cables
- 6-Test and adjust all cameras

Title: General Notes & Scope of Work	
BL-02	01/27/2016

**WAYNE STATE
UNIVERSITY**

Wayne State University
Design & Construction Services
WSU Project: Blue Lights-Athletic Campus
WSU Project Number: 080-275368

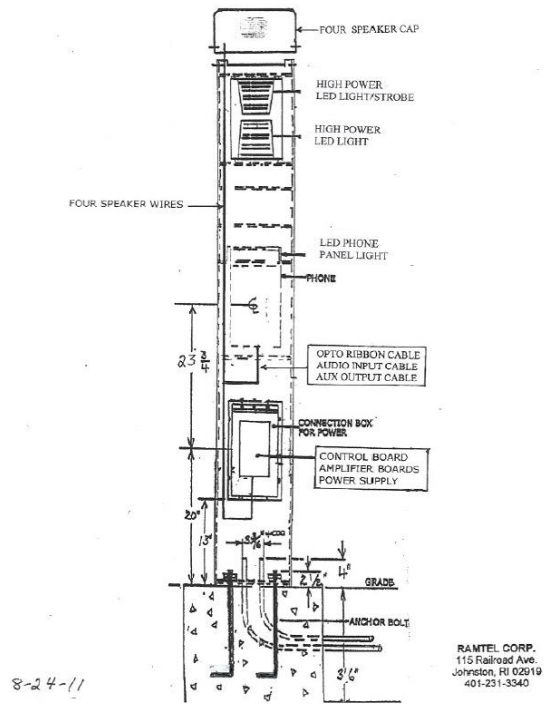


Title:	Blue light 1 and 2
BL-03	01/27/2016

WAYNE STATE
UNIVERSITY

Wayne State University
Design & Construction Services
WSU Project: Blue Lights-Athletic Campus
WSU Project Number: 080-275368

PLC 8A LED ALL CAMPUS ALERT INSTALLATION



PLC 8A LED ACA Installation

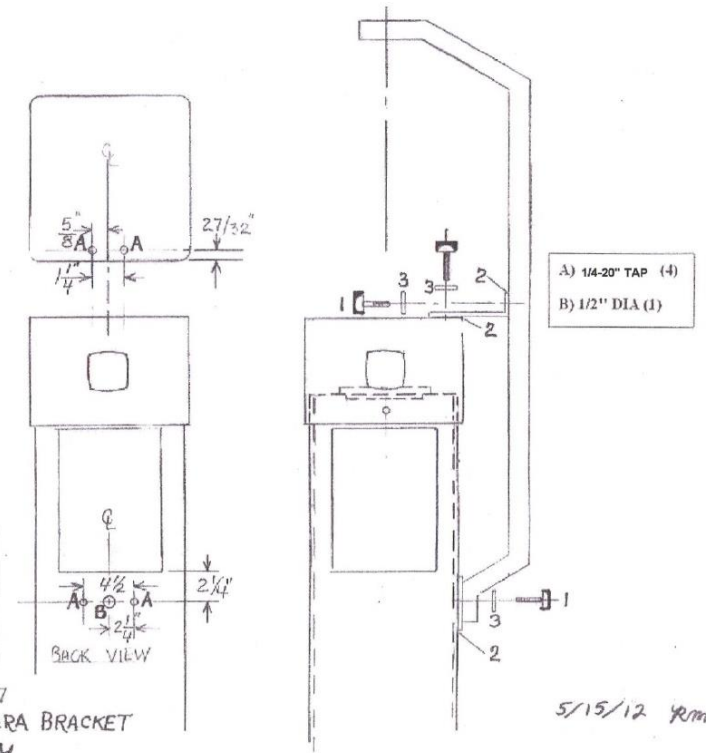


To Assemble Camera Bracket

- 1) Camera Mount attaches below Strobe Light using 1/4-20 Hex Screws (2) and Flat Washers (2)
- 2) Secure Angle Bracket to Top Cap and Camera Mount using 1/4-20 Hex Screws (4) & Flat Washers (4)
- 3) BE SURE TO INSTALL THE (3) RUBBER GASKETS PROVIDED

1. 1/4-20 Hex Screws (6)
2. Rubber Gaskets (3)
3. Flat Washers (6)

800-1127
PLC 8 ACA CAMERA BRACKET
ASSEMBLY



PLC 8 ACA Camera Bracket assembly

Title:	PLC 8 ACA Installation
BL-04	01/27/2016

**WAYNE STATE
UNIVERSITY**

Wayne State University
Design & Construction Services
WSU Project: Blue Lights-Athletic Campus
WSU Project Number: 080-275368