

16 PARTIAL STONE RELACEMENT
A5-97 3" = 1'-0" REFERRED FROM:

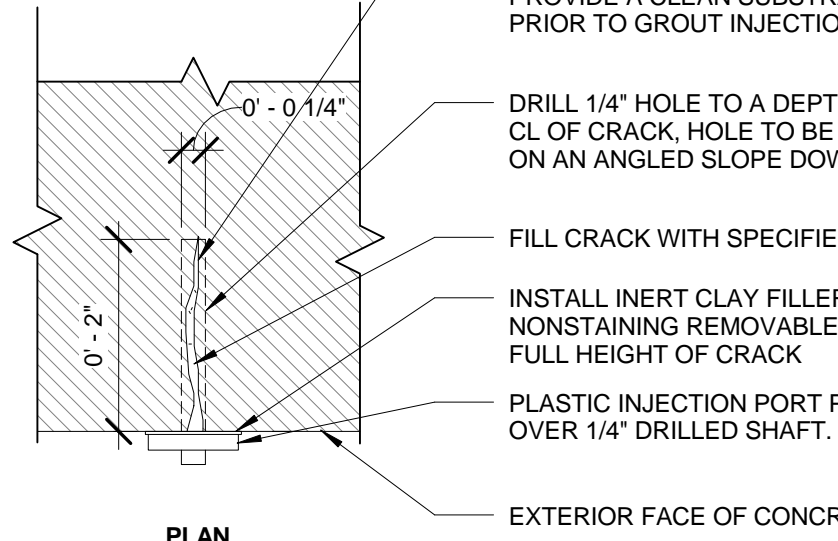
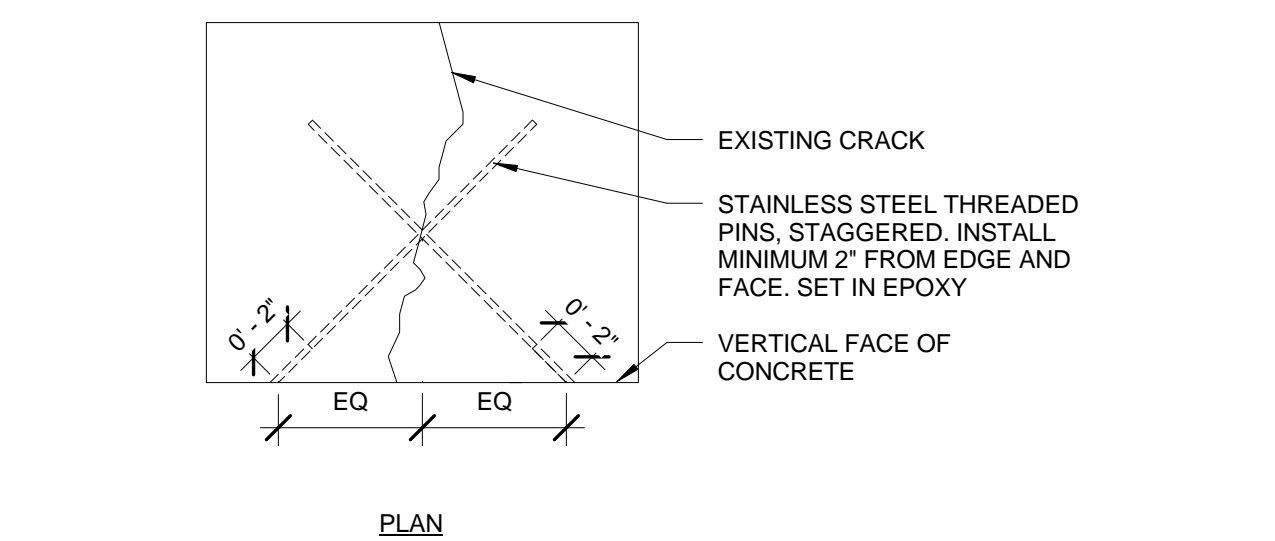
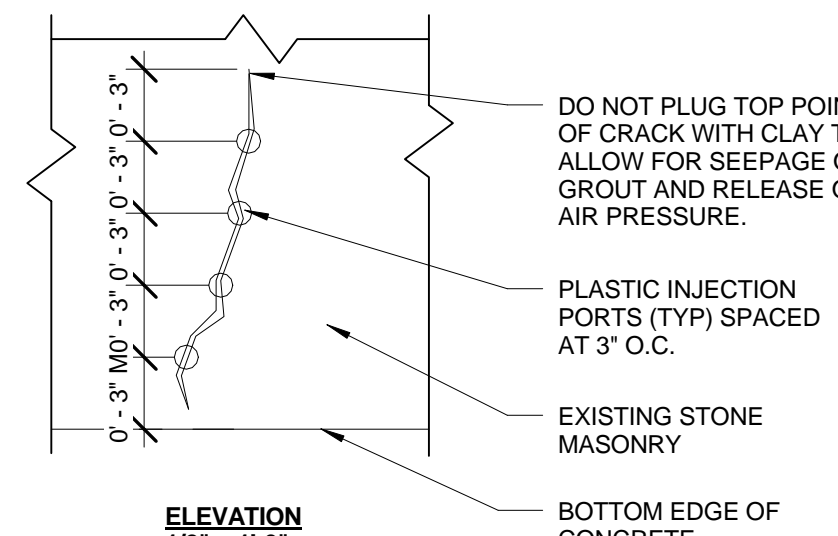
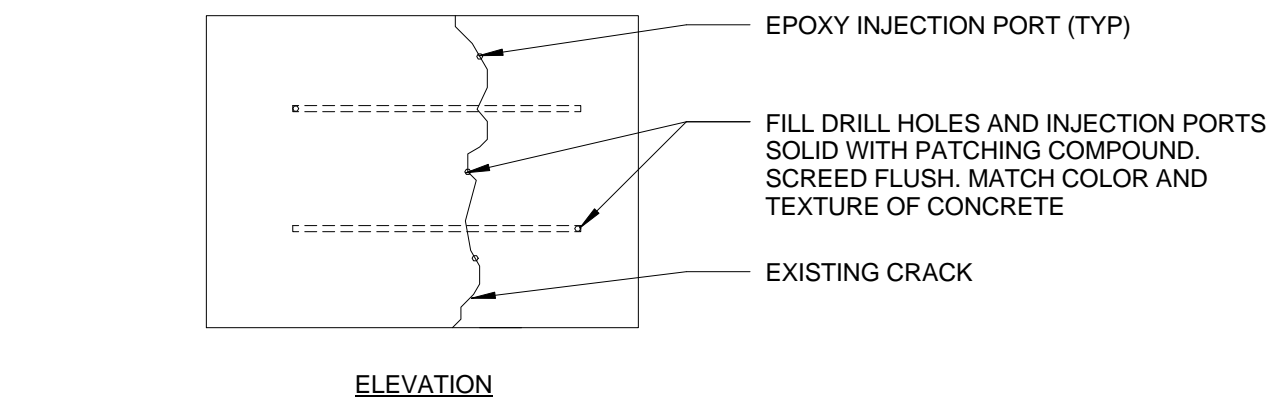
12 CONCRETE PATCHING
A5-97 3" = 1'-0" REFERRED FROM:

15 STONE MASONRY REPAIR @ CRACKS
LESS THAN 1/4" WIDE
A5-97 3" = 1'-0" REFERRED FROM:

11 STONE PATCHING
A5-97 3" = 1'-0" REFERRED FROM:

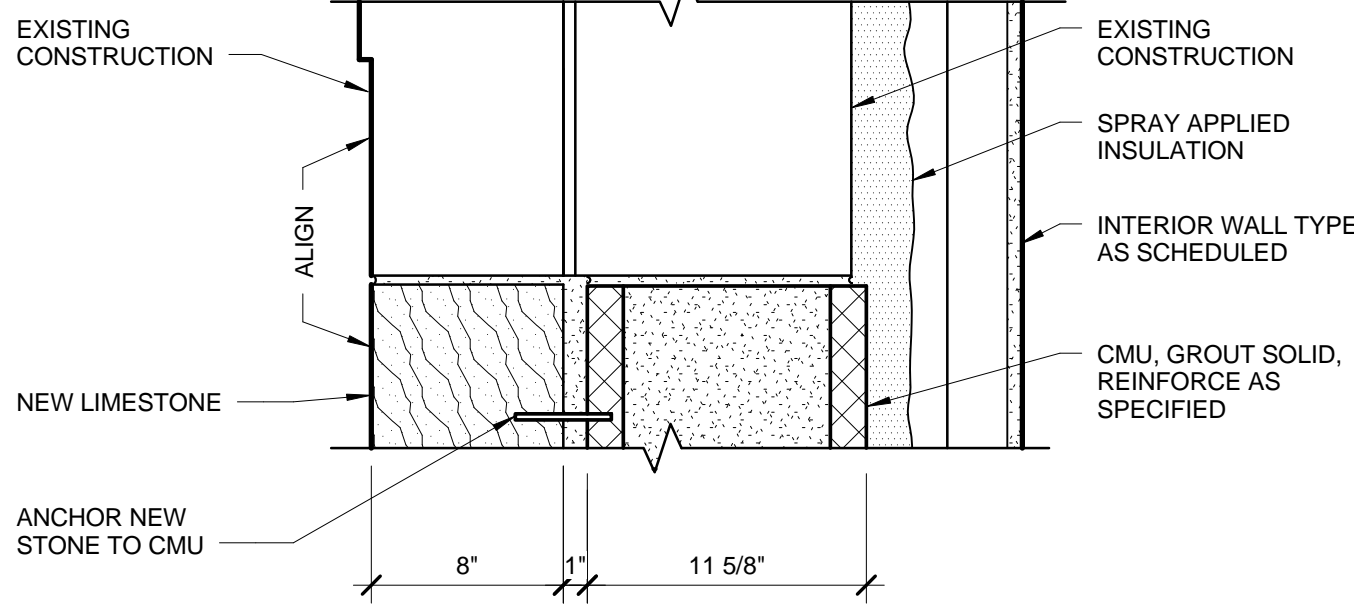
14 STONE MASONRY REPAIR @ CRACKS
GREATER THAN 1/4" WIDE
A5-97 1 1/2" = 1'-0" REFERRED FROM:

10 SKY FACE JOINT, TYP.
A5-97 6" = 1'-0" REFERRED FROM:

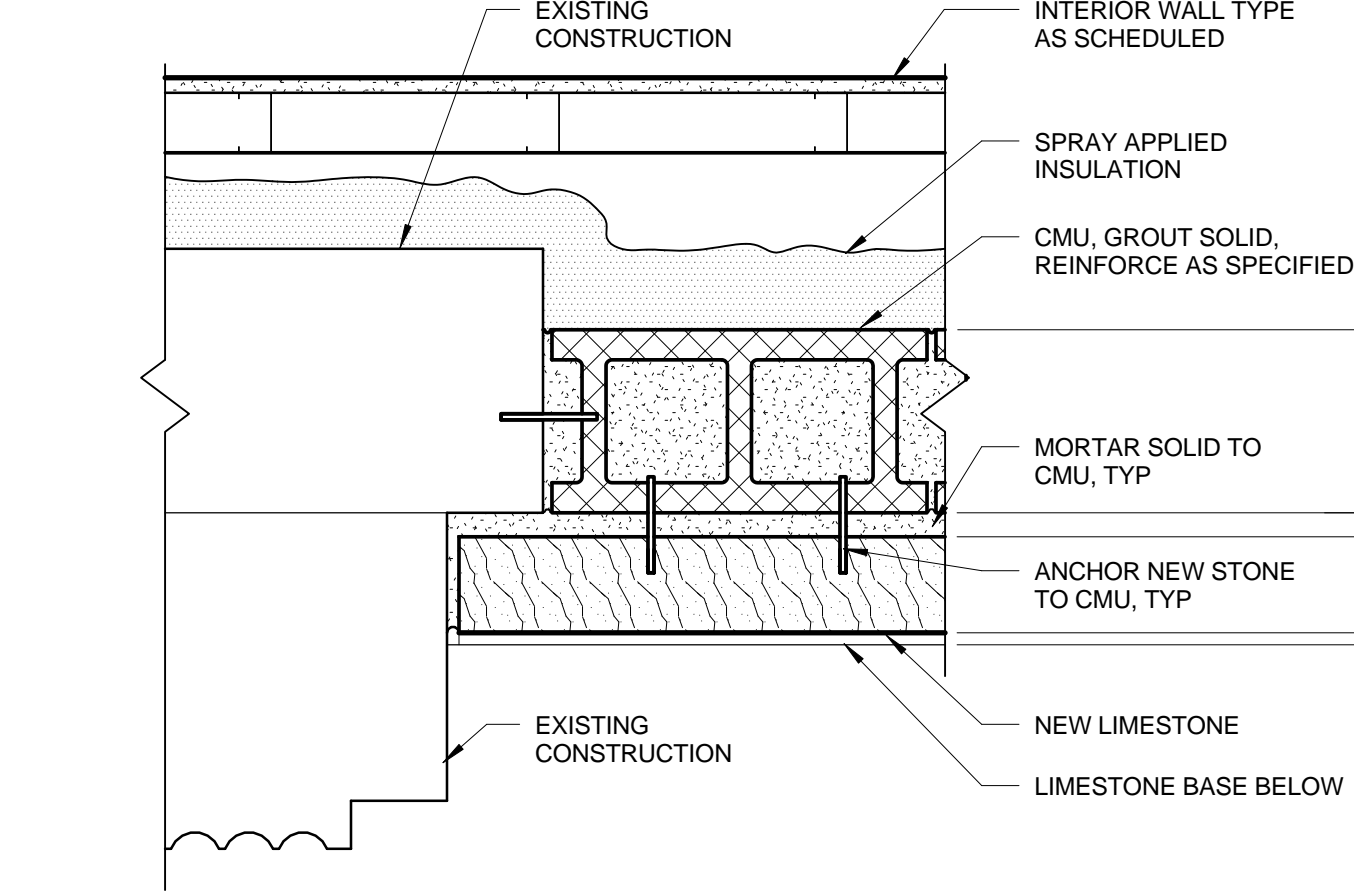


13 CONCRETE REPAIR - EPOXY INJECTION
A5-97 1 1/2" = 1'-0" REFERRED FROM:

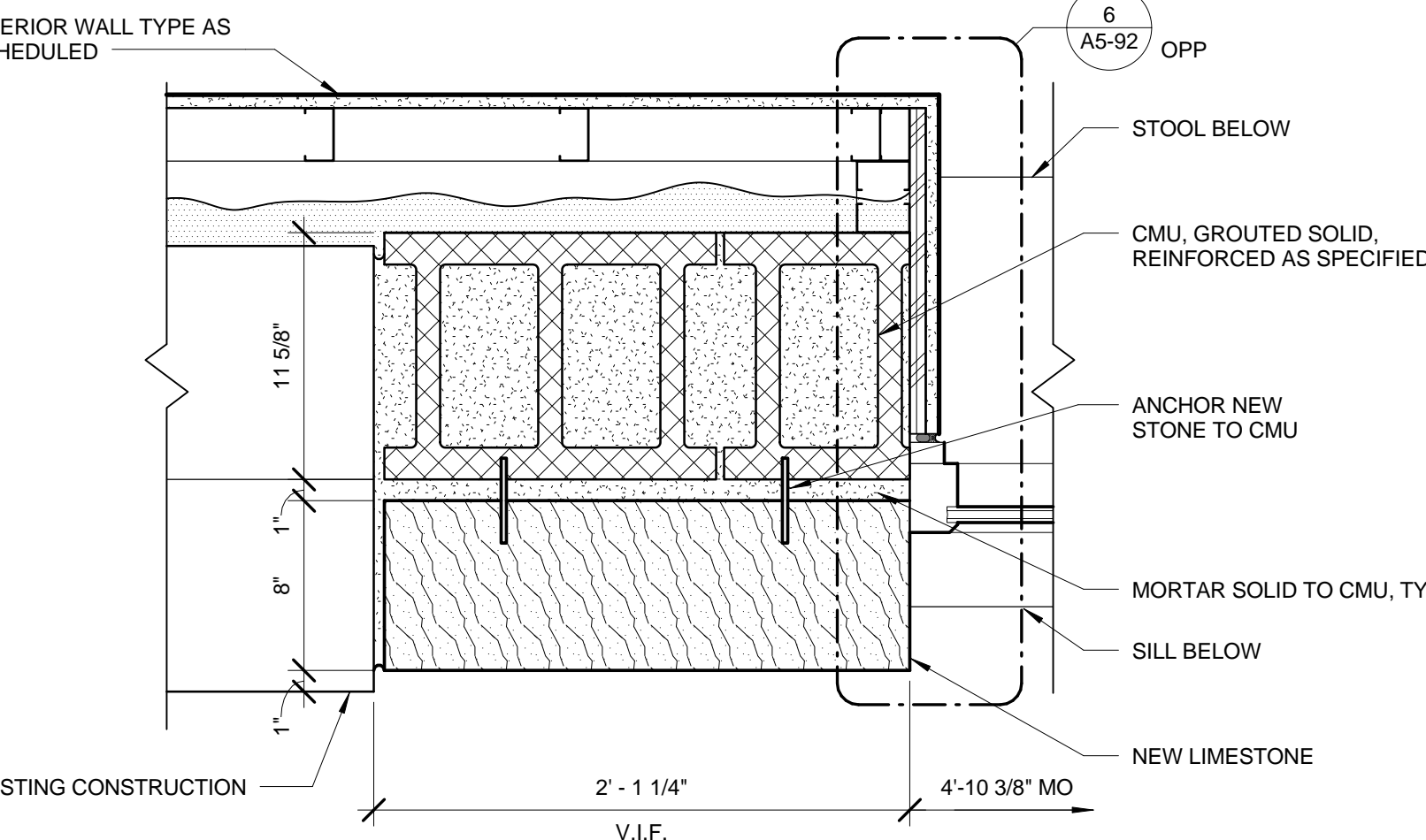
9 CONCRETE REPAIR - GROUT INJECTION
A5-97 6" = 1'-0" REFERRED FROM:



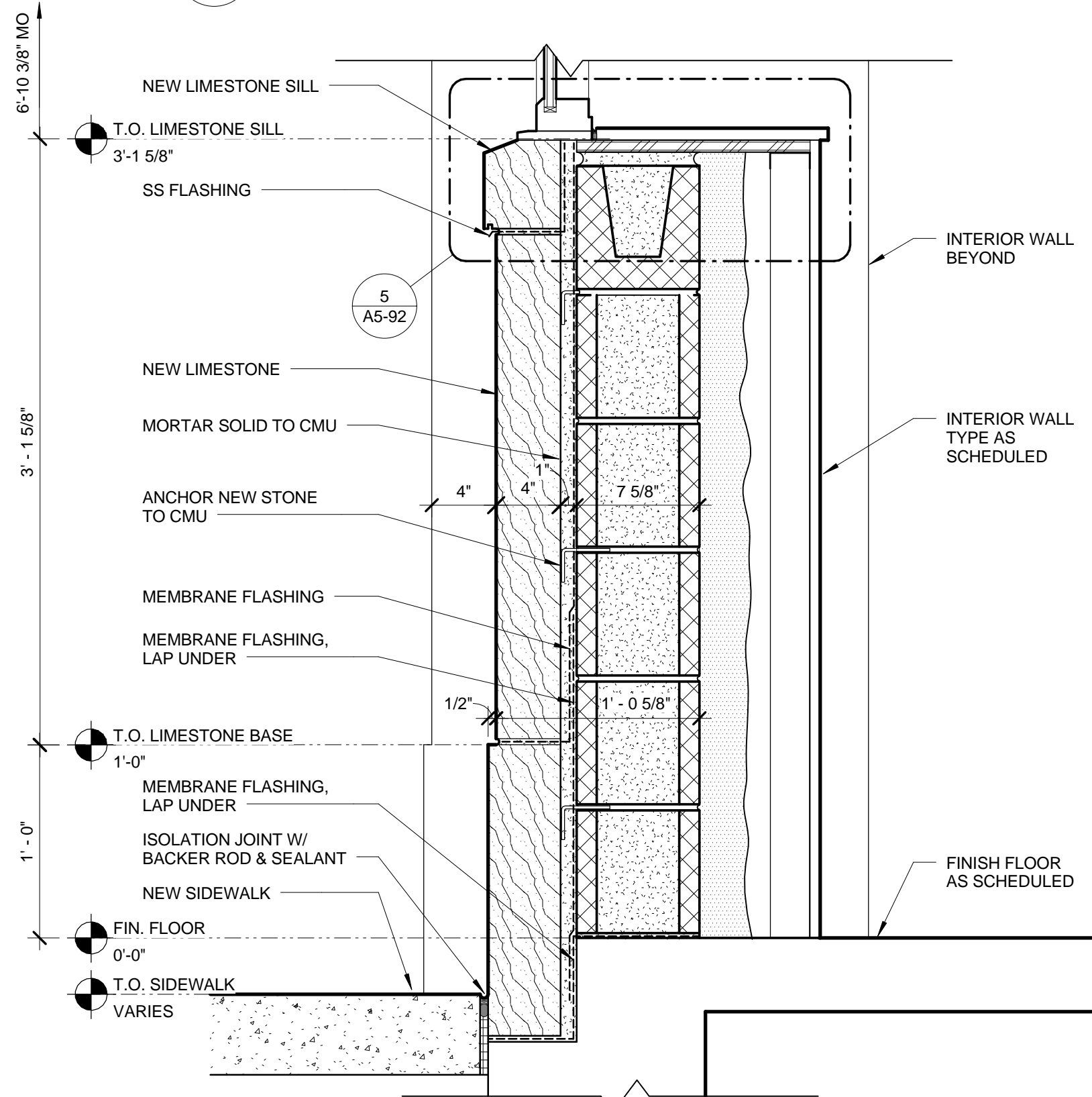
8 STONE MASONRY DETAIL
A5-97 1 1/2" = 1'-0" REFERRED FROM: A2-21



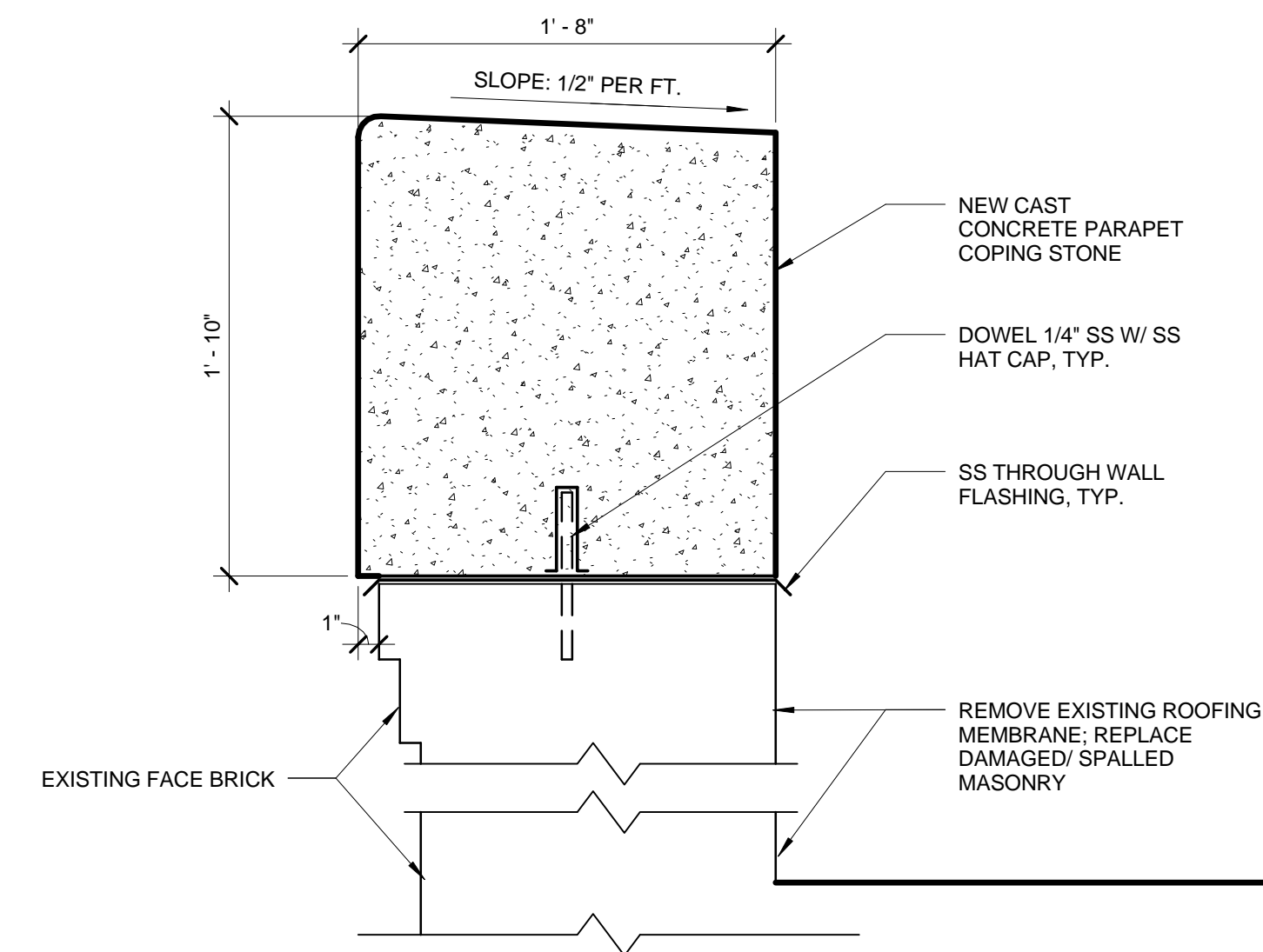
7 NEW STONE @ DOOR INFILL
A5-97 1 1/2" = 1'-0" REFERRED FROM: A2-21



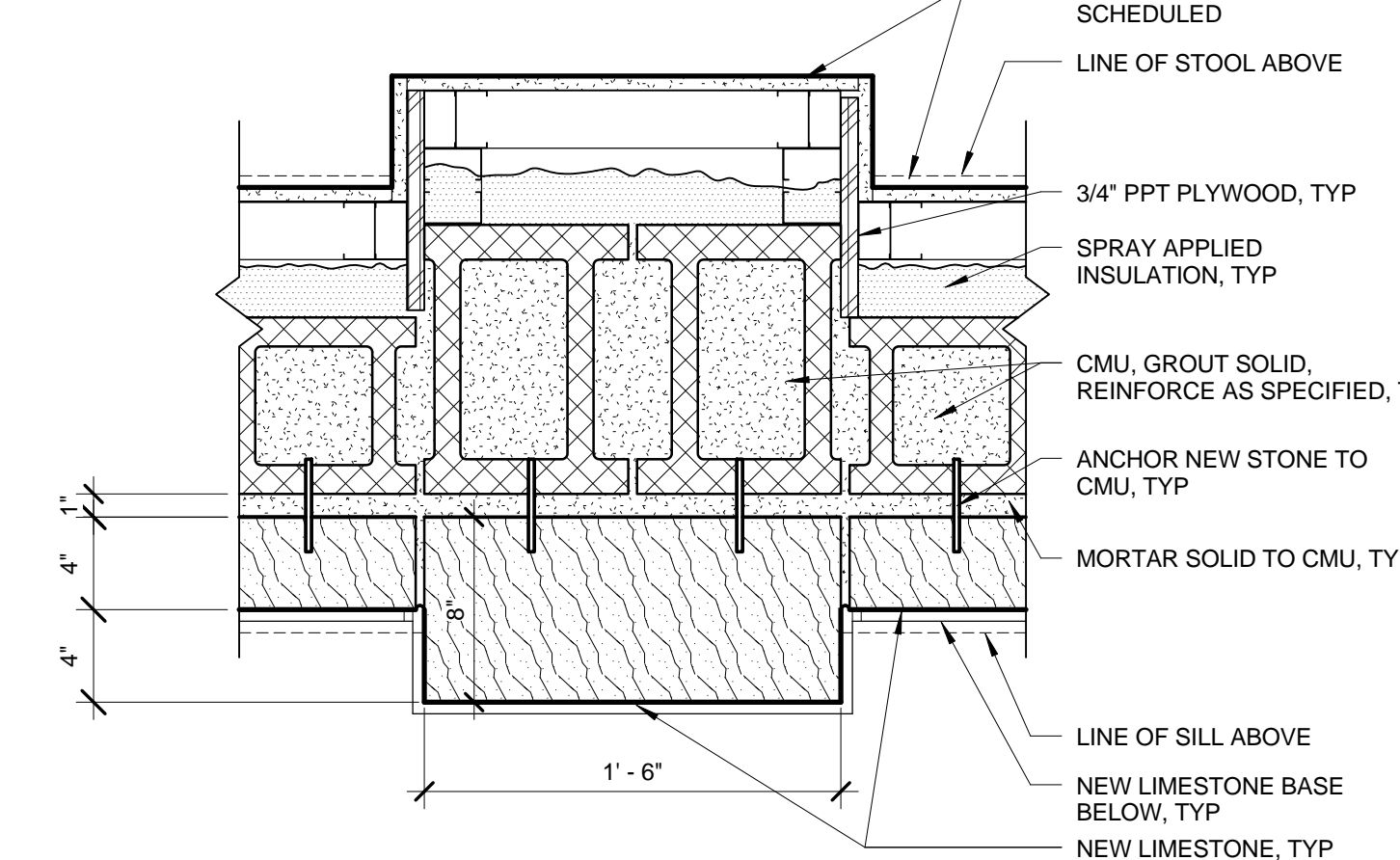
6 NEW STONE INFILL
A5-97 1 1/2" = 1'-0" REFERRED FROM: A2-21



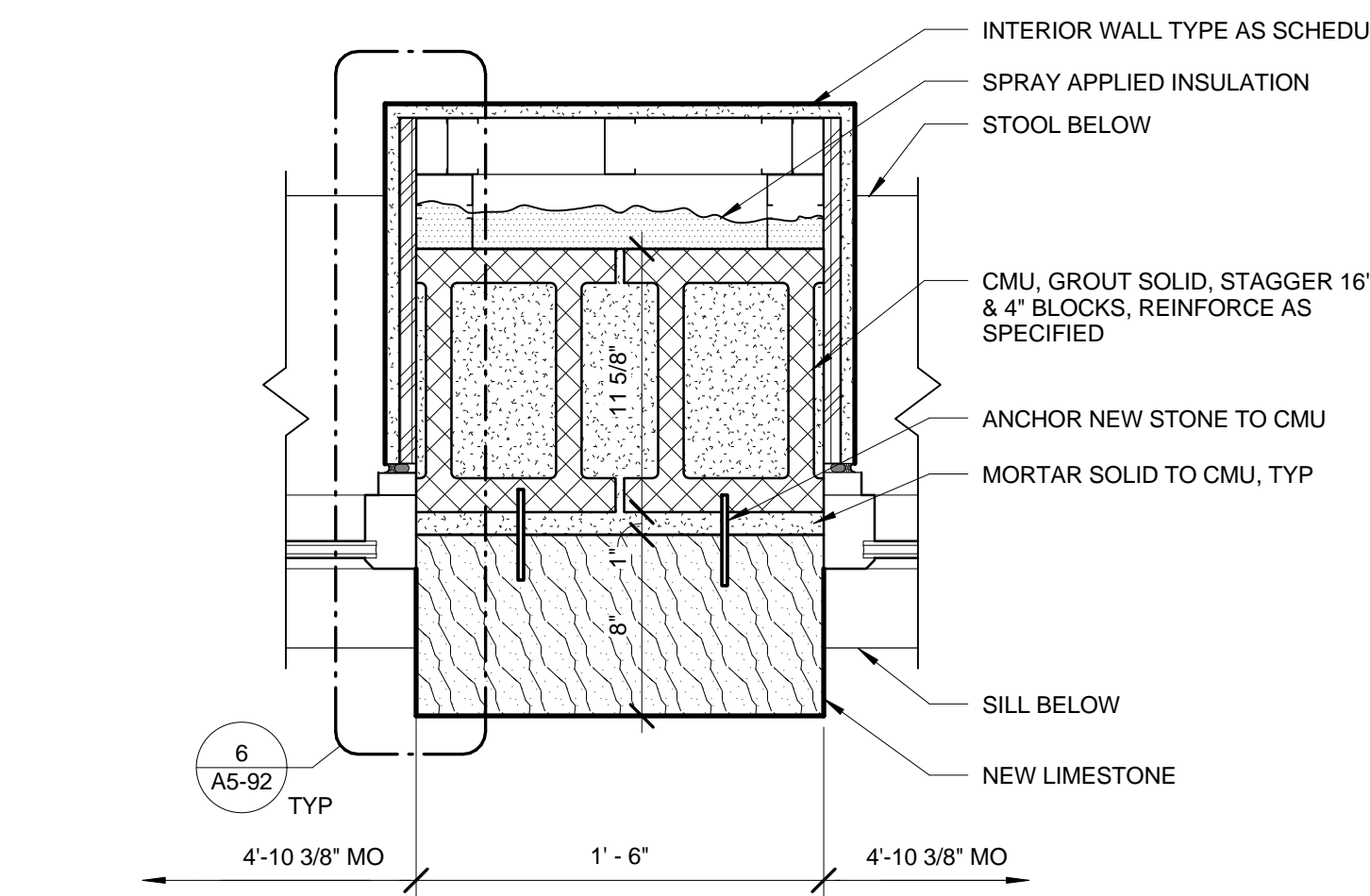
5 NEW STONE BASE @ WINDOW INFILL, TYP
A5-97 1 1/2" = 1'-0" REFERRED FROM: A2-21



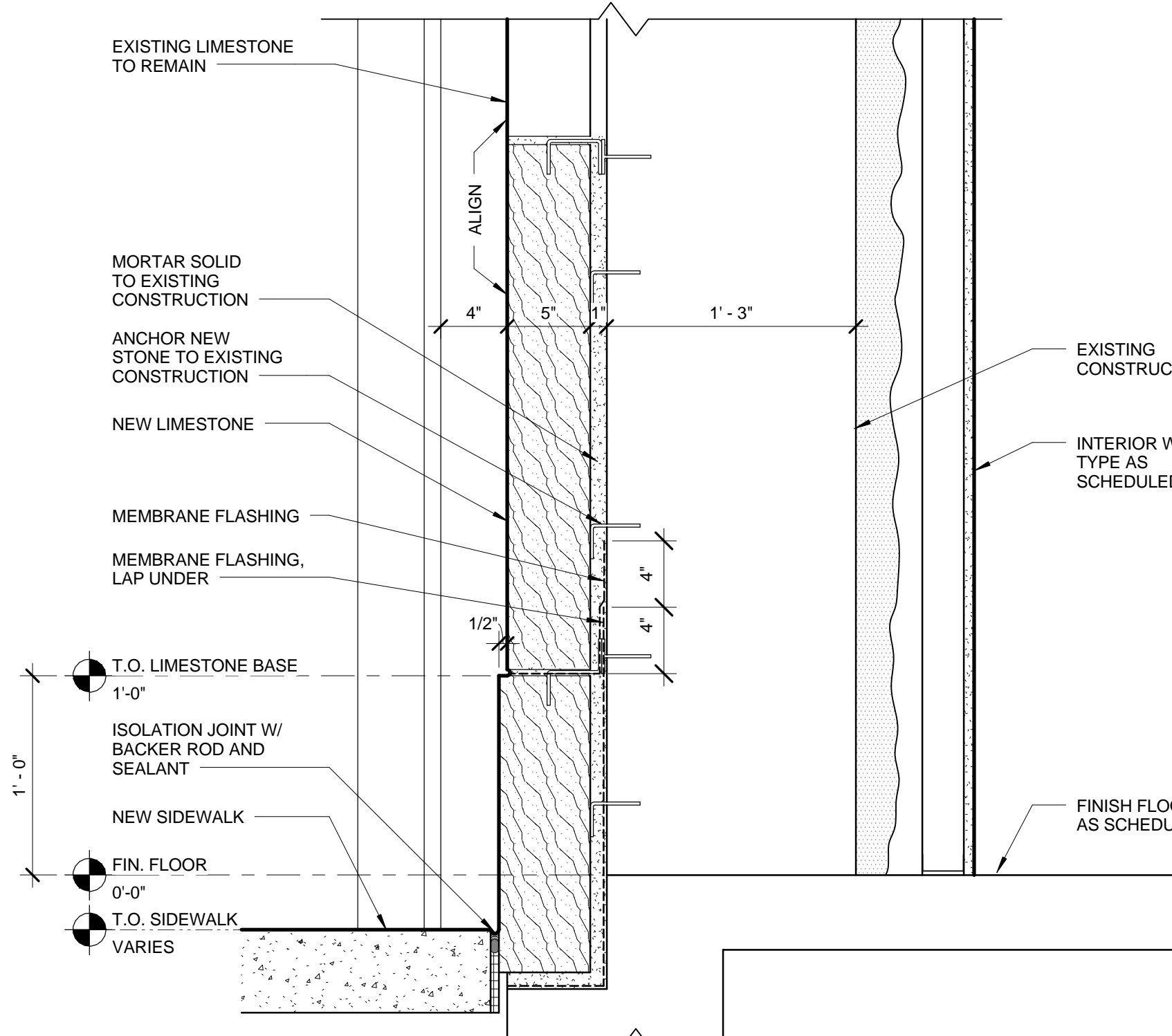
4 PARAPET CAP AT PYLONS
A5-97 1 1/2" = 1'-0" REFERRED FROM: A2-21



3 NEW STONE PIER @ BASE, TYP.
A5-97 1 1/2" = 1'-0" REFERRED FROM: A2-21



2 NEW STONE PIER @ WINDOWS, TYP.
A5-97 1 1/2" = 1'-0" REFERRED FROM: A2-21

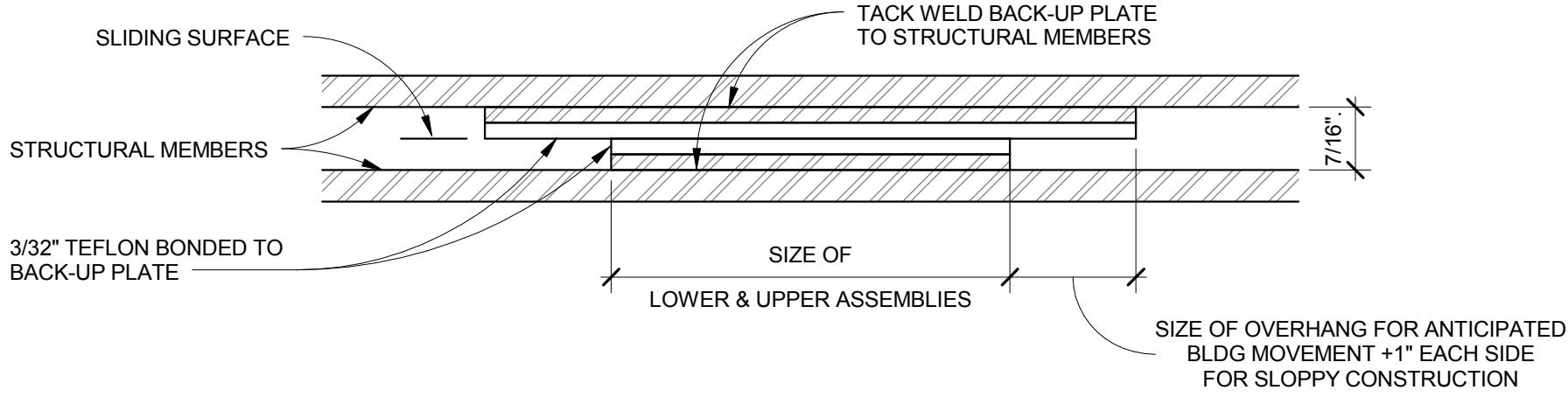


1 NEW STONE BASE, TYP
A5-97 1 1/2" = 1'-0" REFERRED FROM: A2-21

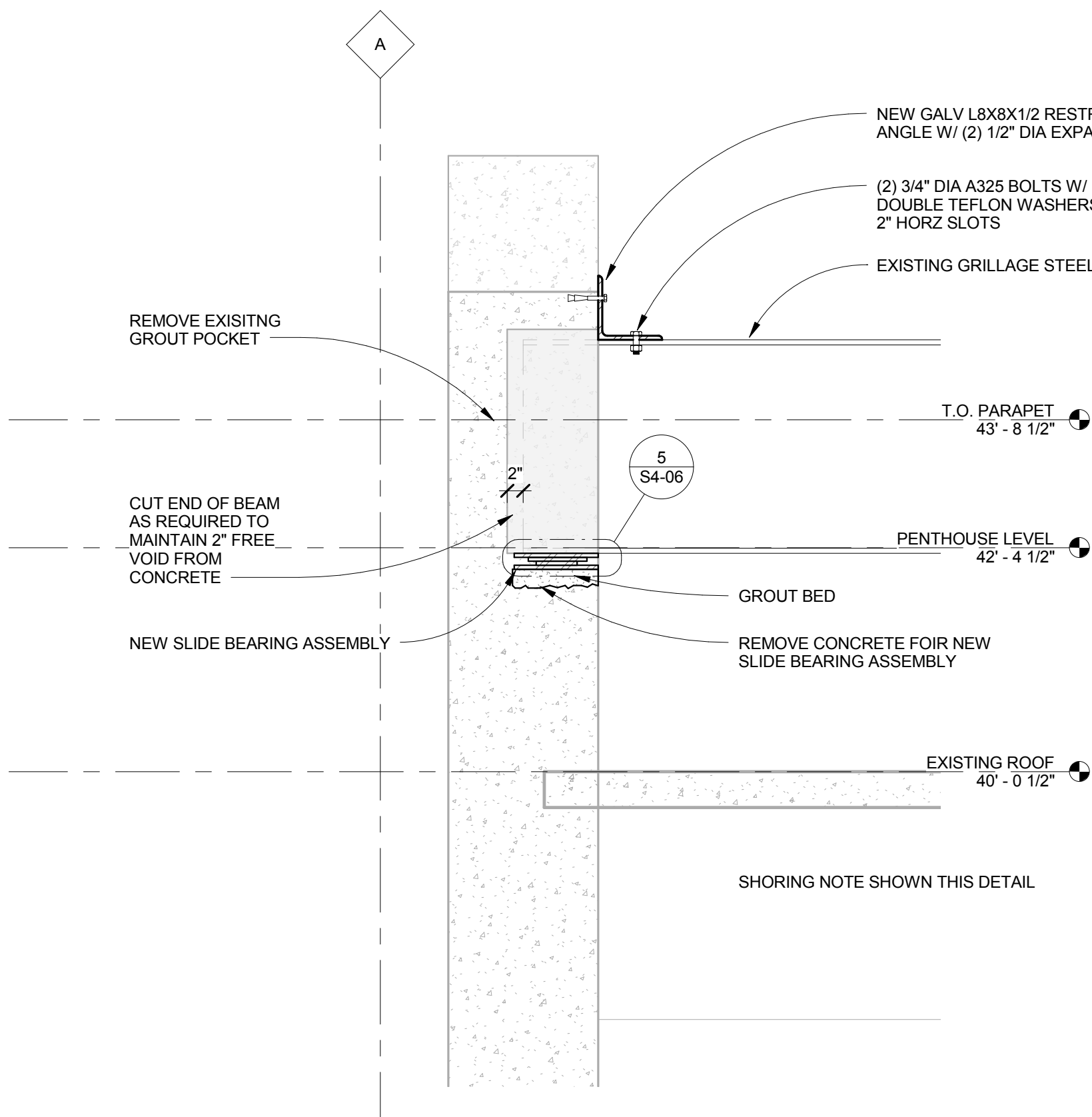
GRILLAGE SHORING AND REMEDIATION

NOTES:

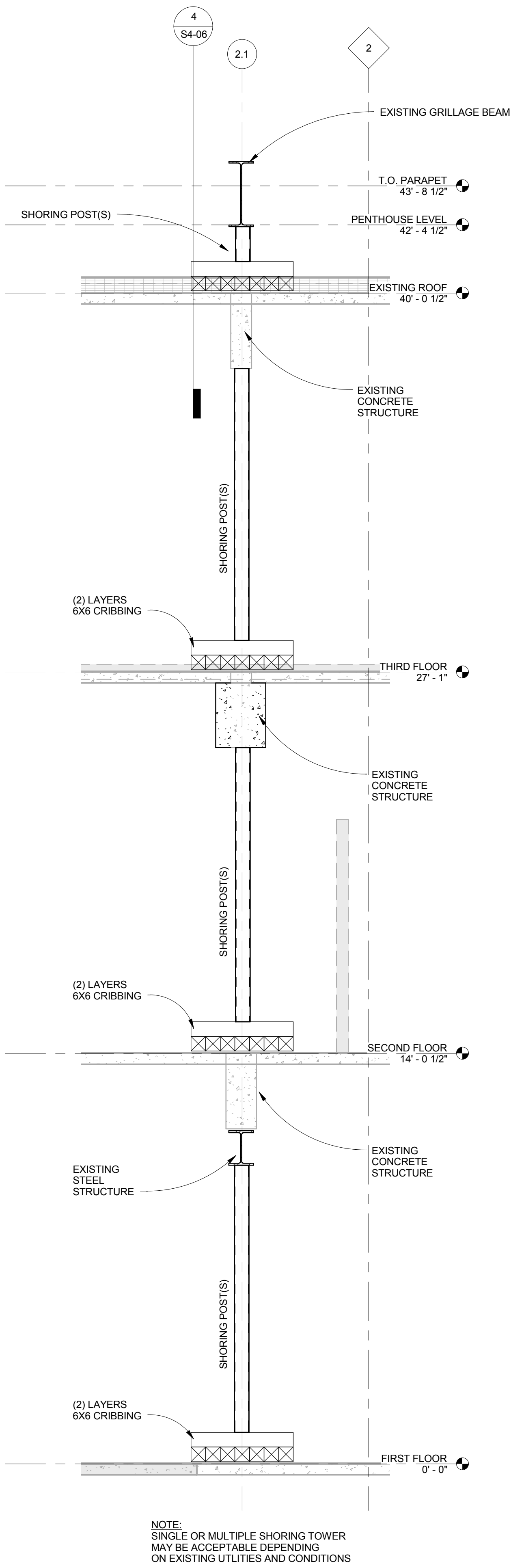
- SHORE GRILLAGE PRIOR TO ANY CONSTRUCTION
- SHORING SYSTEMS MAY VARY FROM SINGLE POST TO MULTI-POST WITH SPREADER BEAM BASED ON FIELD CONDITIONS.
- SHORING LOAD FOR ALL CONDITIONS IS 90 KIPS



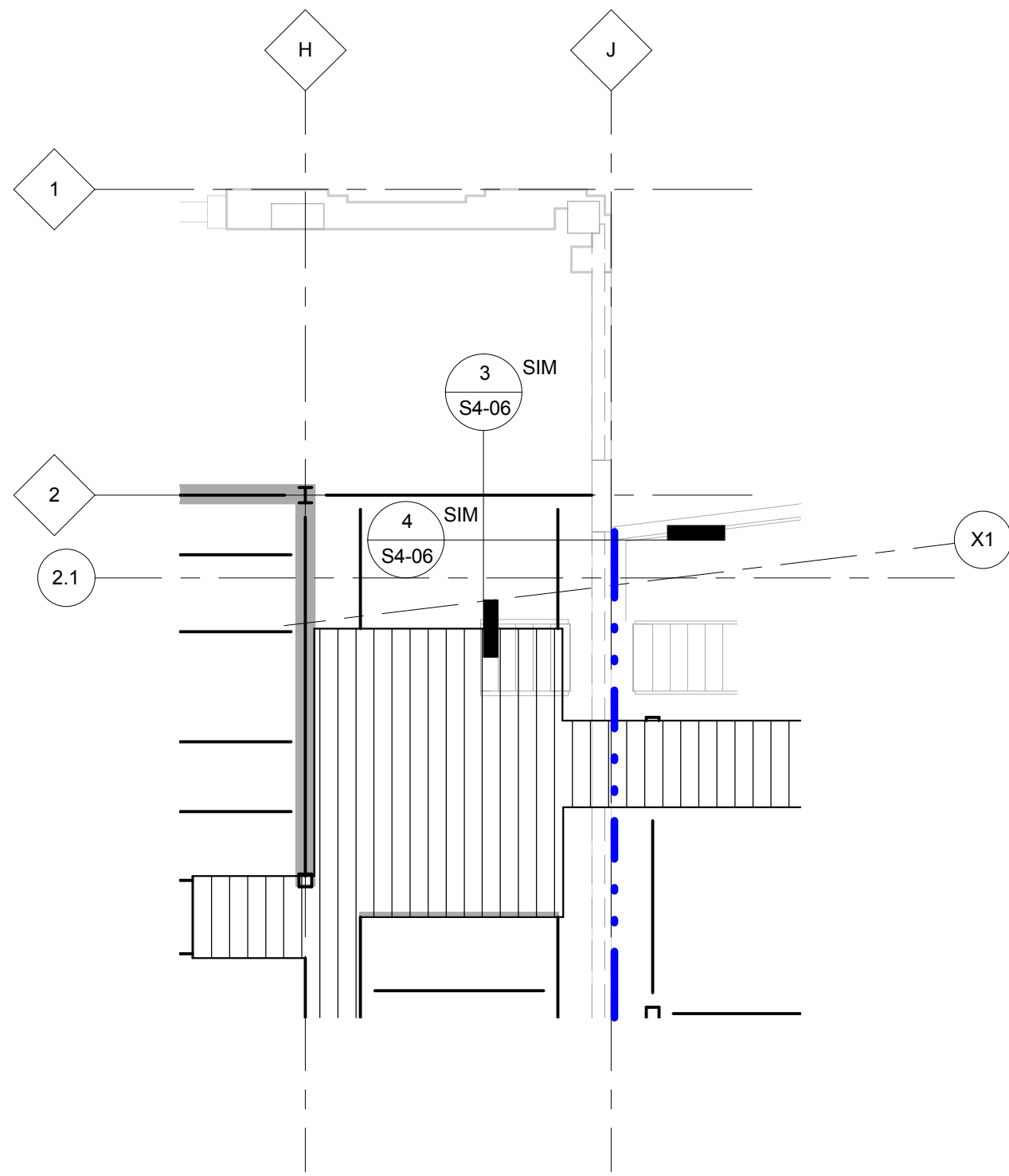
5 TYP TEFLON SLIDING BEARING PAD DETAIL
SCALE: 3/4" = 1'-0"



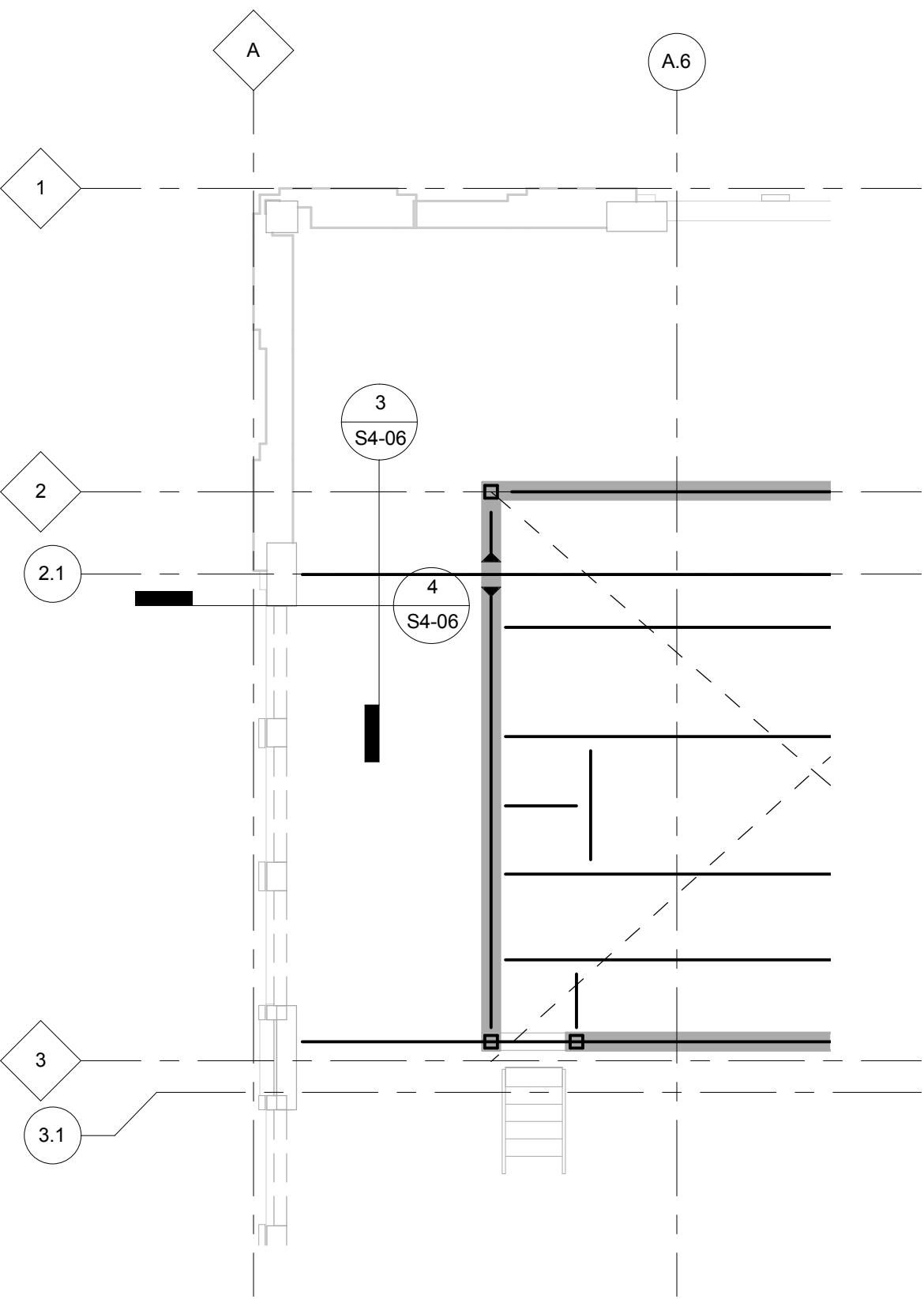
4 SECTION
SCALE: 3/4" = 1'-0"



3 SECTION
SCALE: 3/8" = 1'-0"



2 PARTIAL PLAN - EAST
SCALE: 1/8" = 1'-0"



1 PARTIAL PLAN - WEST
SCALE: 1/8" = 1'-0"