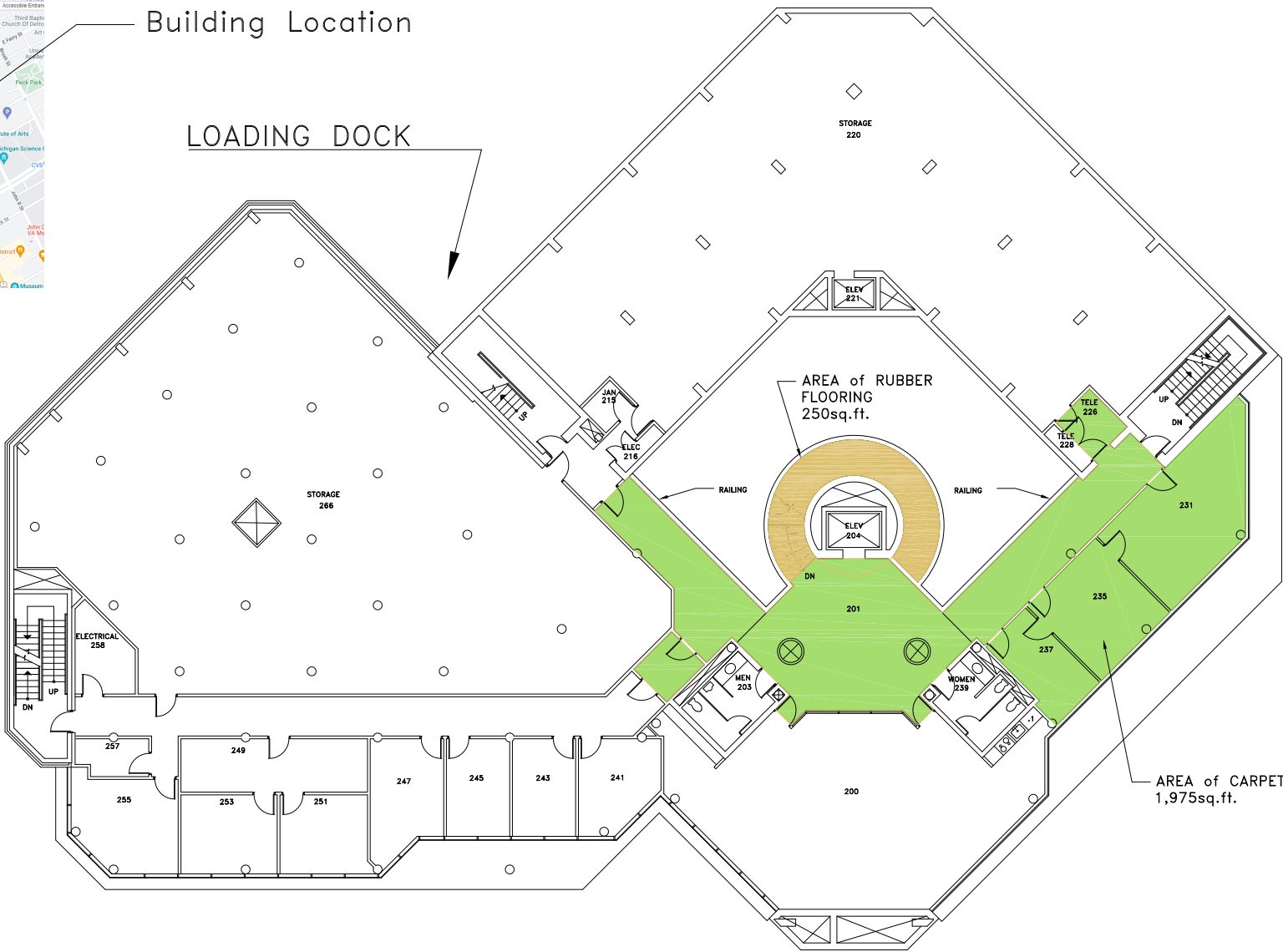


Building Location

LOADING DOCK

**NOTE:**

- ALL SQUARE FOOTAGES ARE APPROXIMATE AND SHOULD BE FIELD VERIFIED BY CONTRACTOR
- ALL FURNITURE WILL BE REMOVED BY OTHERS PRIOR TO PROJECT COMMENCEMENT AND MOVED AFTER BY OTHERS POST INSTALLATION
- CONTRACTOR LIABLE FOR AND DAMAGE TO ADJACENT SURFACES
- INSTALLATION MUST MEET MANUFACTURE'S INSTALLATION REQUIREMENTS

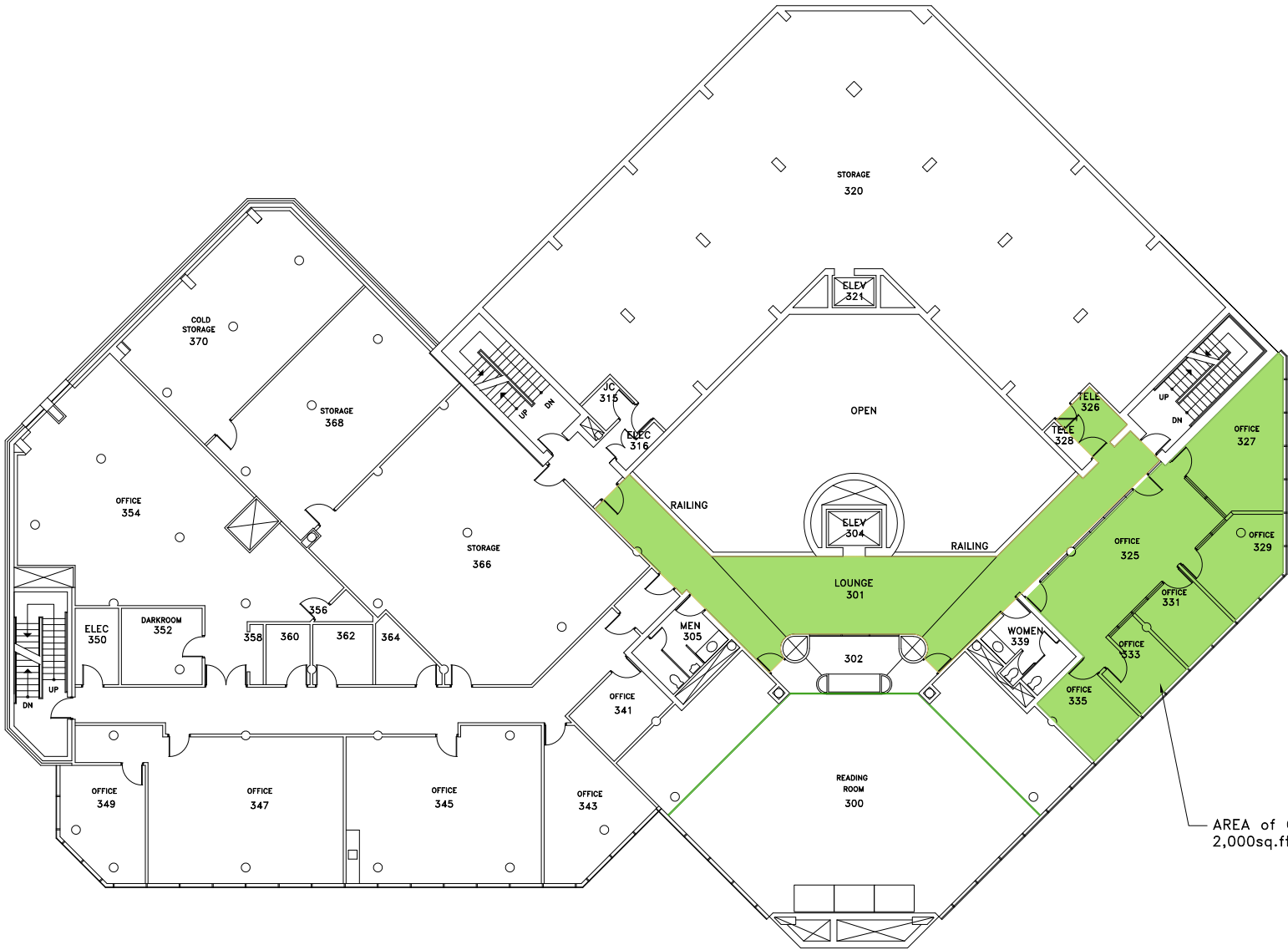


WALTER P. REUTHER LIBRARY

BUILDING #036  
SECOND FLOOR PLAN

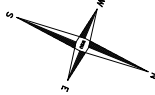


DISCLAIMER:  
WAYNE STATE UNIVERSITY, FACILITIES PLANNING AND MANAGEMENT MAKES THESE DOCUMENTS AVAILABLE ON AN "AS IS" BASIS. THESE DRAWINGS WERE CREATED USING AUTOCAD FROM AUTODESK AND ARE ACCURATE FOR SPACE MANAGEMENT, "FLOOR PLAN" USE. THE USERS WILL HOLD HARMLESS WSU, ITS OFFICERS, AGENTS, AND EMPLOYEES FROM DAMAGES OR COST, INCLUDING REASONABLE ATTORNEY'S FEES, ARISING FROM THE USE OF THESE DRAWINGS.



WALTER P. REUTHER LIBRARY

BUILDING #036  
THIRD FLOOR PLAN



DISCLAIMER:  
WAYNE STATE UNIVERSITY, FACILITIES PLANNING AND MANAGEMENT MAKES THESE DOCUMENTS AVAILABLE ON AN "AS IS" BASIS. THESE DRAWINGS WERE CREATED USING AUTOCAD FROM AUTODESK AND ARE ACCURATE FOR SPACE MANAGEMENT, "FLOOR PLAN" USE. THE USERS WILL HOLD HARMLESS WSU, ITS OFFICERS, AGENTS, AND EMPLOYEES FROM DAMAGES OR COST, INCLUDING REASONABLE ATTORNEY'S FEES, ARISING FROM THE USE OF THESE DRAWINGS.

# 2nd & 3rd Floor Plans - Walter P. Reuther Library

## 036-404318 - Carpet for Reuther

Scale: not to scale  
Date: 2023.11.17

