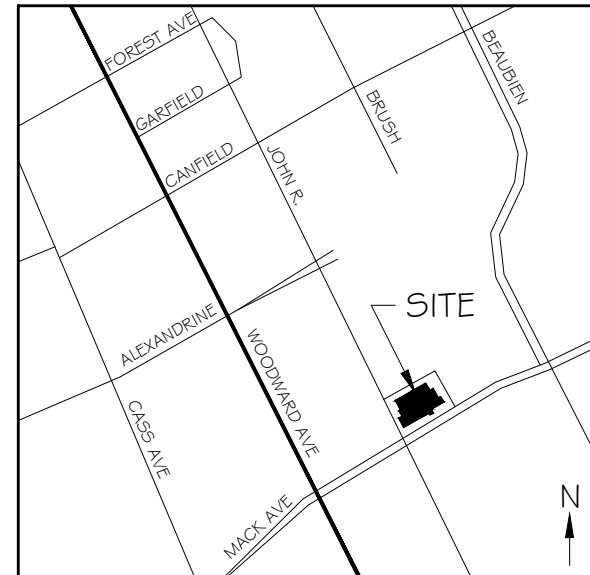


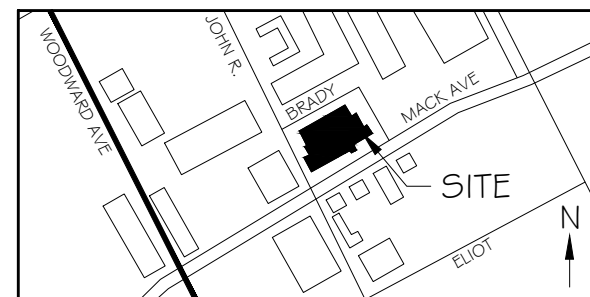
WAYNE STATE UNIVERSITY PHARM SCI CARPET/FLOOR REPLACEMENT

Detroit, MI

WSU Project Number 603-325262



VICINITY MAP - NO SCALE



LOCATION MAP - NO SCALE

DRAWING INDEX:

GENERAL

G.01 - TITLE SHEET

ARCHITECTURAL

A.01 - BASEMENT FLOOR PLAN

A.02 - FIRST FLOOR PLAN

A.03 - SECOND FLOOR PLAN

A.04 - THIRD FLOOR PLAN

A.05 - FIFTH FLOOR PLAN

Drawing Title
 PHARM SCI CARPET/FLOOR REPLACEMENT
 TITLE SHEET

General Notes

DISCLAIMER: WAYNE STATE UNIVERSITY, FACILITIES PLANNING AND MANAGEMENT MAKES THESE DOCUMENTS AVAILABLE ON AN "AS IS" BASIS. THESE DRAWINGS WERE CREATED USING AUTOCAD FROM AUTODESK AND ARE ACCURATE FOR SPACE MANAGEMENT, FLOOR PLAN USE. THE USERS WILL HOLD HARMLESS WSU, ITS OFFICERS, AGENTS, AND EMPLOYEES FROM DAMAGES OR COST, INCLUDING REASONABLE ATTORNEY'S FEES, ARISING FROM THE USE OF THESE DRAWINGS.

Drawn By

Checked By

No.	Revision/Issue	Date
1	Bids	1/6/20

Firm Name and Address

Wayne State University
Facilities Planning and Management
Design & Construction Services
5454 Cass Avenue
Detroit, MI 48202

Project Name and Address

PHARM SCI CARPET/FLOOR REPLACEMENT

APPLEBAUM COLLEGE OF PHARMACY & HEALTH SCIENCES
259 MACK, DETROIT, MI

Project Number

603-325262

Date

1/6/2020

Sheet

G.01

Drawing Title
 PHARM SCI CARPET/FLOOR REPLACEMENT
 BASEMENT

General Notes

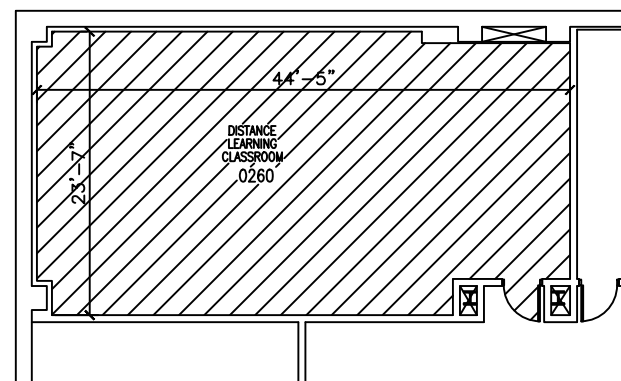
DISCLAIMER: WAYNE STATE UNIVERSITY, FACILITIES PLANNING AND MANAGEMENT MAKES THESE DOCUMENTS AVAILABLE ON AN "AS IS" BASIS. THESE DRAWINGS WERE CREATED USING AUTOCAD FROM AUTODESK AND ARE ACCURATE FOR SPACE MANAGEMENT, FLOOR PLAN USE. THE USERS WILL HOLD HARMLESS WSU, ITS OFFICERS, AGENTS, AND EMPLOYEES FROM DAMAGES OR COST, INCLUDING REASONABLE ATTORNEY'S FEES, ARISING FROM THE USE OF THESE DRAWINGS.

Drawn By		
Checked By		
1	Bids	1/6/20
No.	Revision/Issue	Date

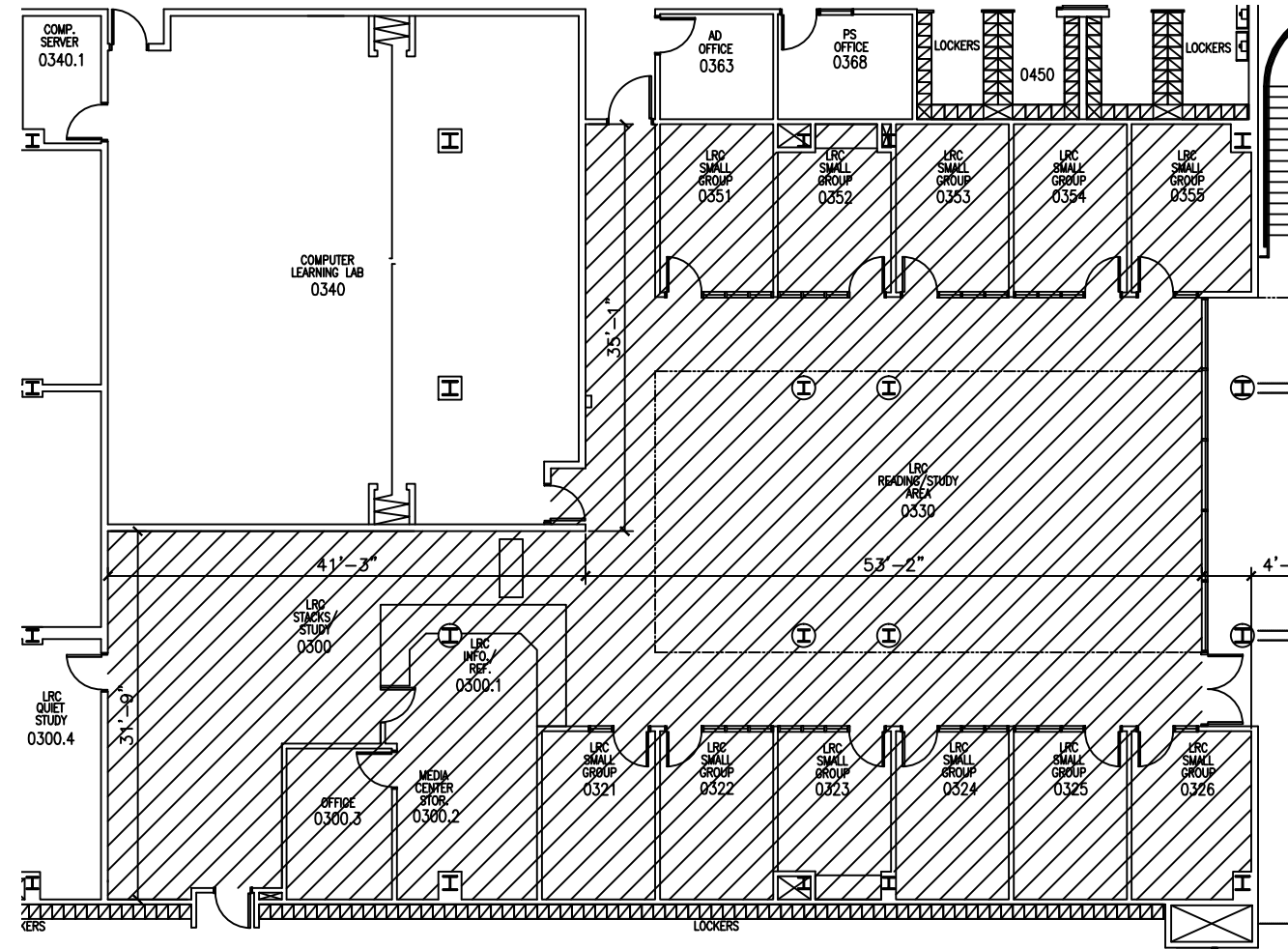
Firm Name and Address
 Wayne State University
 Facilities Planning and Management
 Design & Construction Services
 5454 Cass Avenue
 Detroit, MI 48202

Project Name and Address
 PHARM SCI CARPET/FLOOR REPLACEMENT
 APPLEBAUM COLLEGE OF PHARMACY & HEALTH SCIENCES
 259 MACK, DETROIT, MI

Project Number 603-325262	Sheet A.01
Date 1/6/2020	

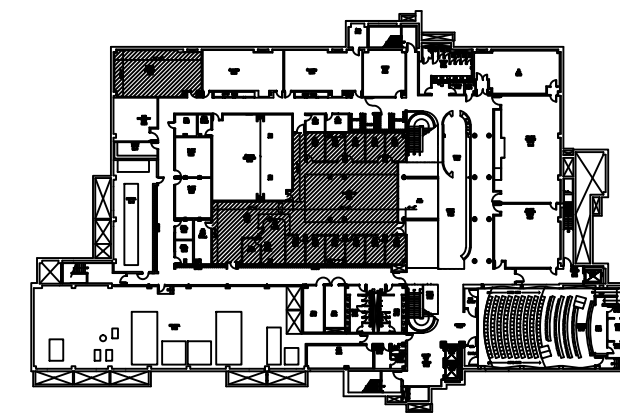
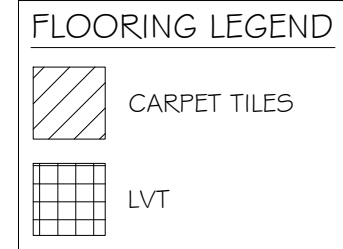


RM 0260 - SPRING PHASE
 SCALE: 1/16" = 1'-0"



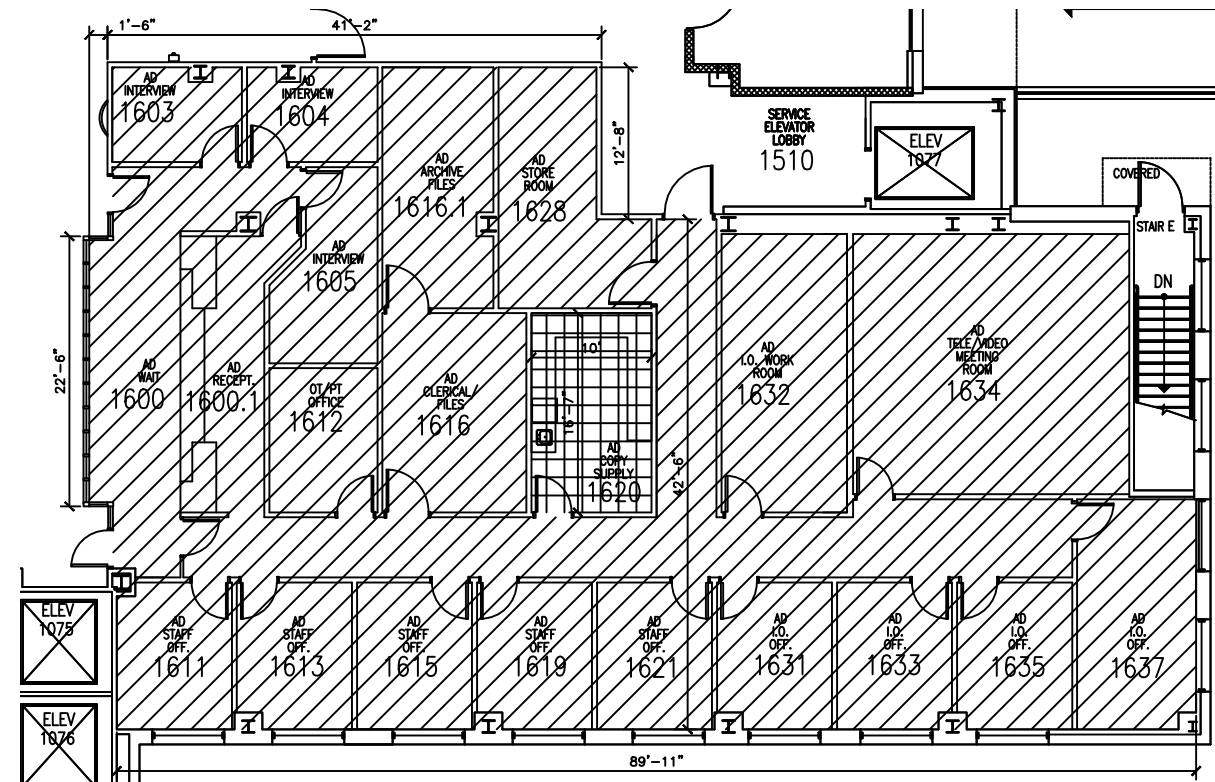
LEARNING RESOURCE CENTER - SPRING PHASE
 SCALE: 1/16" = 1'-0"

- GENERAL NOTES**
 (TYPICAL ALL SHADED AREAS)
1. REMOVE EXISTING FLOORING AND WALL BASE.
 2. INSTALL NEW FLOORING PER LEGEND AND SPECIFICATIONS.
 3. INSTALL NEW WALL BASE PER SPECIFICATION.



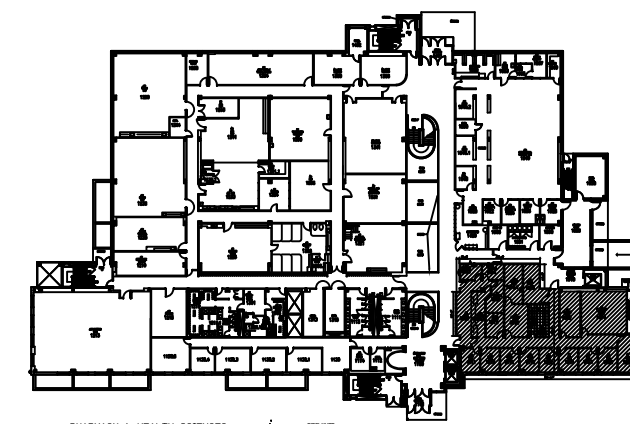
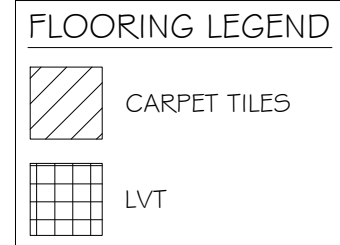
BASEMENT - VICINITY MAP
 NO SCALE

PHARM SCI CARPET/FLOOR REPLACEMENT
FIRST FLOOR



SUITE 1600 - SUMMER PHASE
SCALE: $\frac{1}{16}'' = 1'-0''$

- GENERAL NOTES**
(TYPICAL ALL SHADED AREAS)
1. REMOVE EXISTING FLOORING AND WALL BASE.
 2. INSTALL NEW FLOORING PER LEGEND AND SPECIFICATIONS.
 3. INSTALL NEW WALL BASE PER SPECIFICATION.



FIRST FLOOR - VICINITY MAP
NO SCALE

General Notes

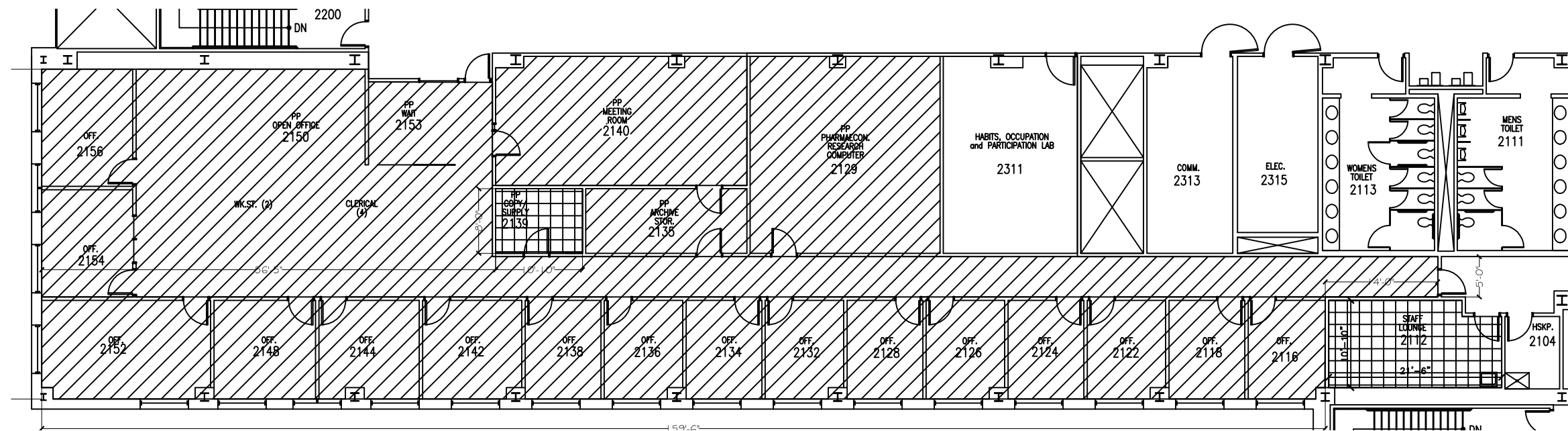
DISCLAIMER: WAYNE STATE UNIVERSITY, FACILITIES PLANNING AND MANAGEMENT MAKES THESE DOCUMENTS AVAILABLE ON AN "AS IS" BASIS. THESE DRAWINGS WERE CREATED USING AUTOCAD FROM AUTODESK AND ARE ACCURATE FOR SPACE MANAGEMENT, FLOOR PLAN USE. THE USERS WILL HOLD HARMLESS WSU, ITS OFFICERS, AGENTS, AND EMPLOYEES FROM DAMAGES OR COST, INCLUDING REASONABLE ATTORNEY'S FEES, ARISING FROM THE USE OF THESE DRAWINGS.

Drawn By		
Checked By		
1	Bids	1/6/20
No.	Revision/Issue	Date

Firm Name and Address
Wayne State University
Facilities Planning and Management
Design & Construction Services
5454 Cass Avenue
Detroit, MI 48202

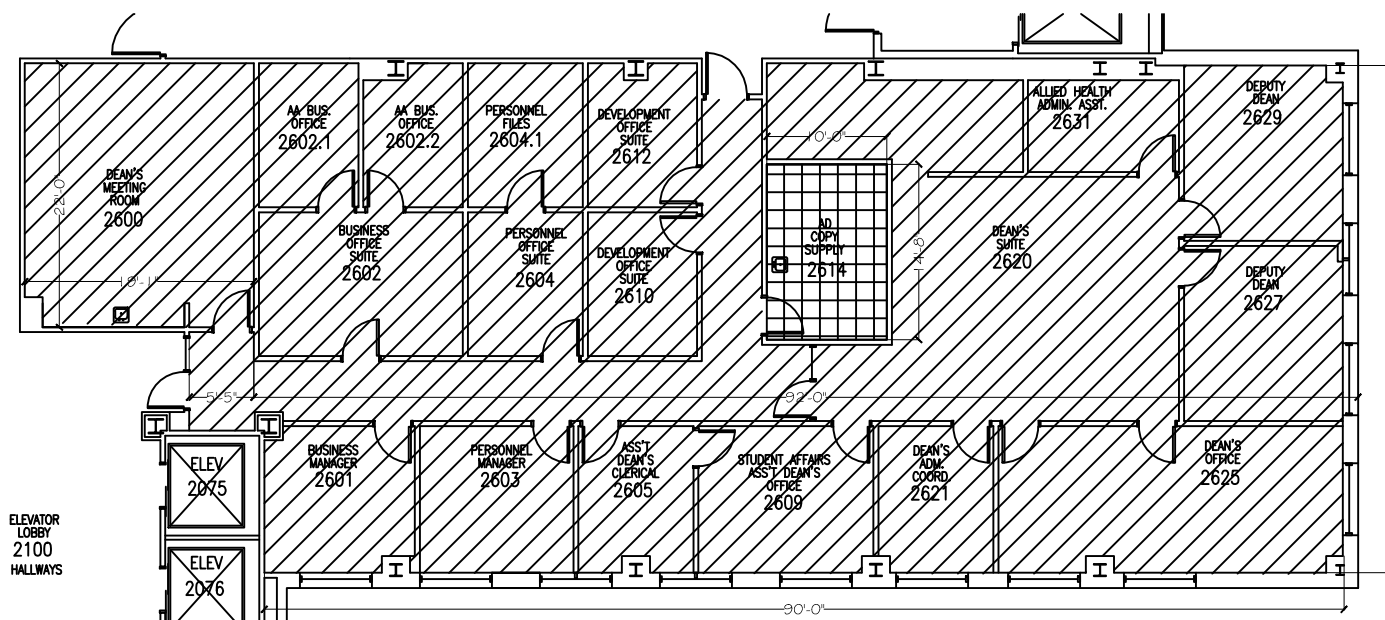
Project Name and Address
PHARM SCI CARPET/FLOOR REPLACEMENT
APPLEBAUM COLLEGE OF PHARMACY & HEALTH SCIENCES
259 MACK, DETROIT, MI

Project Number 603-325262	Sheet A.02
Date 1/6/2020	



SUITE 2100 - SUMMER PHASE

SCALE: 1/16" = 1'-0"

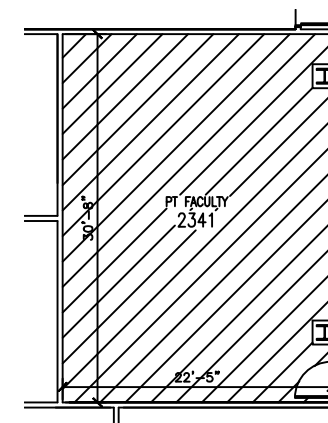
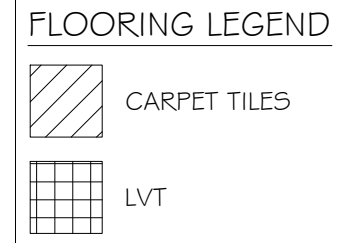


SUITE 2600 - SUMMER PHASE

SCALE: 1/16" = 1'-0"

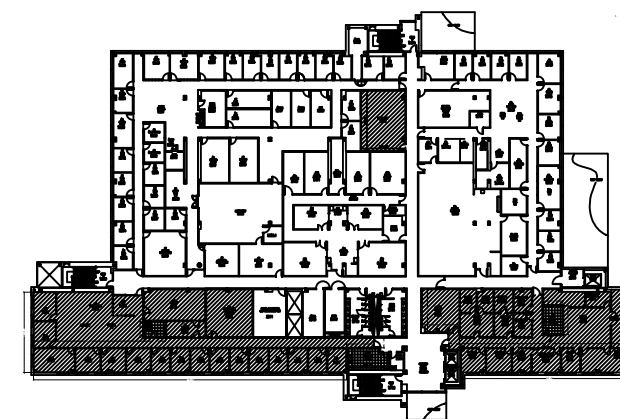
ELEVATOR LOBBY 2100 HALLWAYS

- GENERAL NOTES**
(TYPICAL ALL SHADED AREAS)
1. REMOVE EXISTING FLOORING AND WALL BASE.
 2. INSTALL NEW FLOORING PER LEGEND AND SPECIFICATIONS.
 3. INSTALL NEW WALL BASE PER SPECIFICATION.



RM 2341 - SPRING PHASE

SCALE: 1/16" = 1'-0"



SECOND FLOOR - VICINITY MAP
NO SCALE

WAYNE STATE UNIVERSITY

PHARM SCI CARPET/FLOOR REPLACEMENT
SECOND FLOOR

Drawing Title

General Notes

DISCLAIMER: WAYNE STATE UNIVERSITY, FACILITIES PLANNING AND MANAGEMENT MAKES THESE DOCUMENTS AVAILABLE ON AN "AS IS" BASIS. THESE DRAWINGS WERE CREATED USING AUTOCAD FROM AUTODESK AND ARE ACCURATE FOR SPACE MANAGEMENT, FLOOR PLAN USE. THE USERS WILL HOLD HARMLESS WSU, ITS OFFICERS, AGENTS, AND EMPLOYEES FROM DAMAGES OR COST, INCLUDING REASONABLE ATTORNEY'S FEES, ARISING FROM THE USE OF THESE DRAWINGS.

Drawn By

Checked By

No.	Revision/Issue	Date
1	Bids	1/6/20

Firm Name and Address

Wayne State University
Facilities Planning and Management
Design & Construction Services
5454 Cass Avenue
Detroit, MI 48202

Project Name and Address

PHARM SCI CARPET/FLOOR REPLACEMENT
APPLEBAUM COLLEGE OF PHARMACY & HEALTH SCIENCES
259 MACK, DETROIT, MI

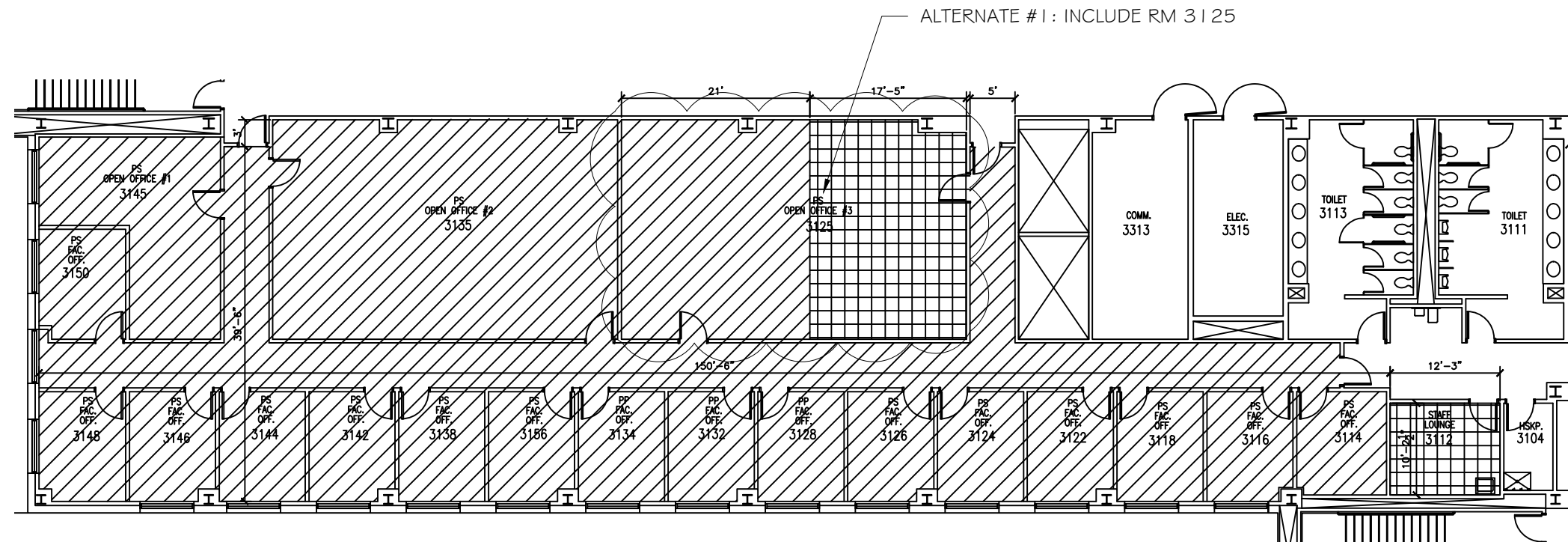
Project Number

603-325262

Date
1/6/2020

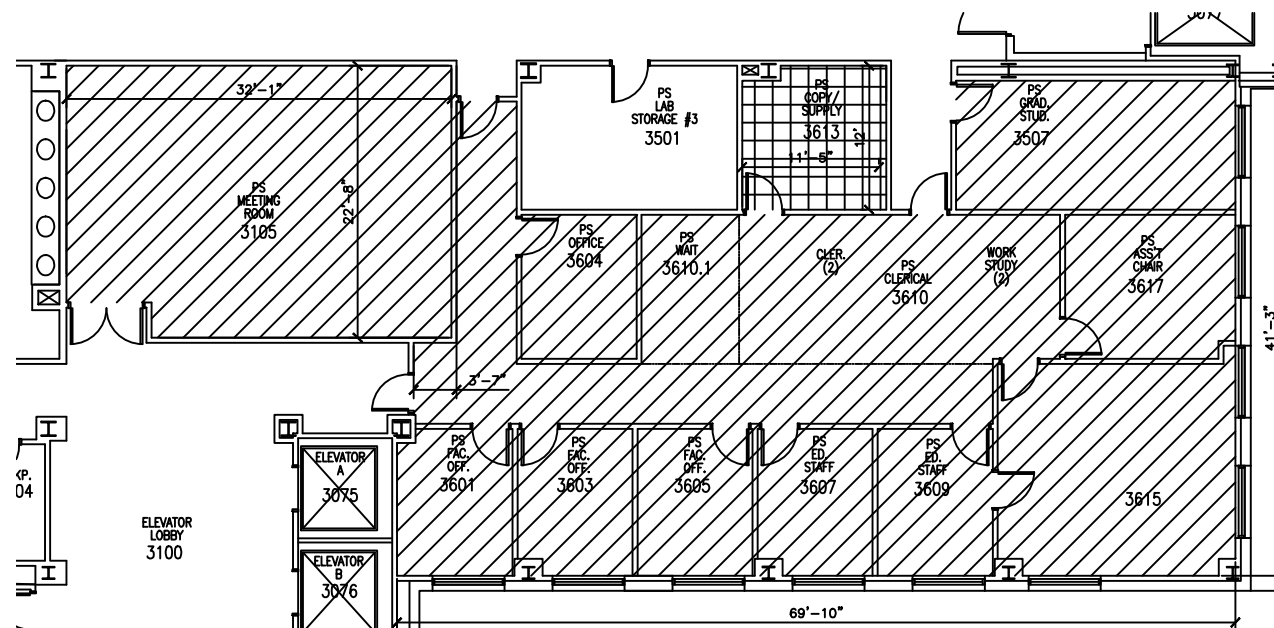
Sheet

A.03



SUITE 3100 - SUMMER PHASE

SCALE: 1/16" = 1'-0"



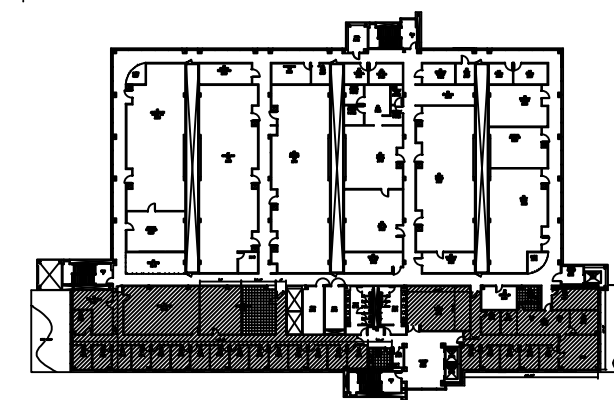
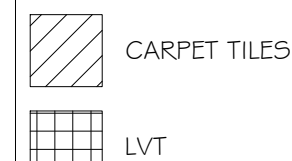
SUITE 3600 AND RM 3105 - SPRING PHASE

SCALE: 1/16" = 1'-0"

GENERAL NOTES
(TYPICAL ALL SHADED AREAS)

1. REMOVE EXISTING FLOORING AND WALL BASE.
2. INSTALL NEW FLOORING PER LEGEND AND SPECIFICATIONS.
3. INSTALL NEW WALL BASE PER SPECIFICATION.

FLOORING LEGEND



THIRD FLOOR - VICINITY MAP
NO SCALE

PHARM SCI CARPET/FLOOR REPLACEMENT
THIRD FLOOR

General Notes

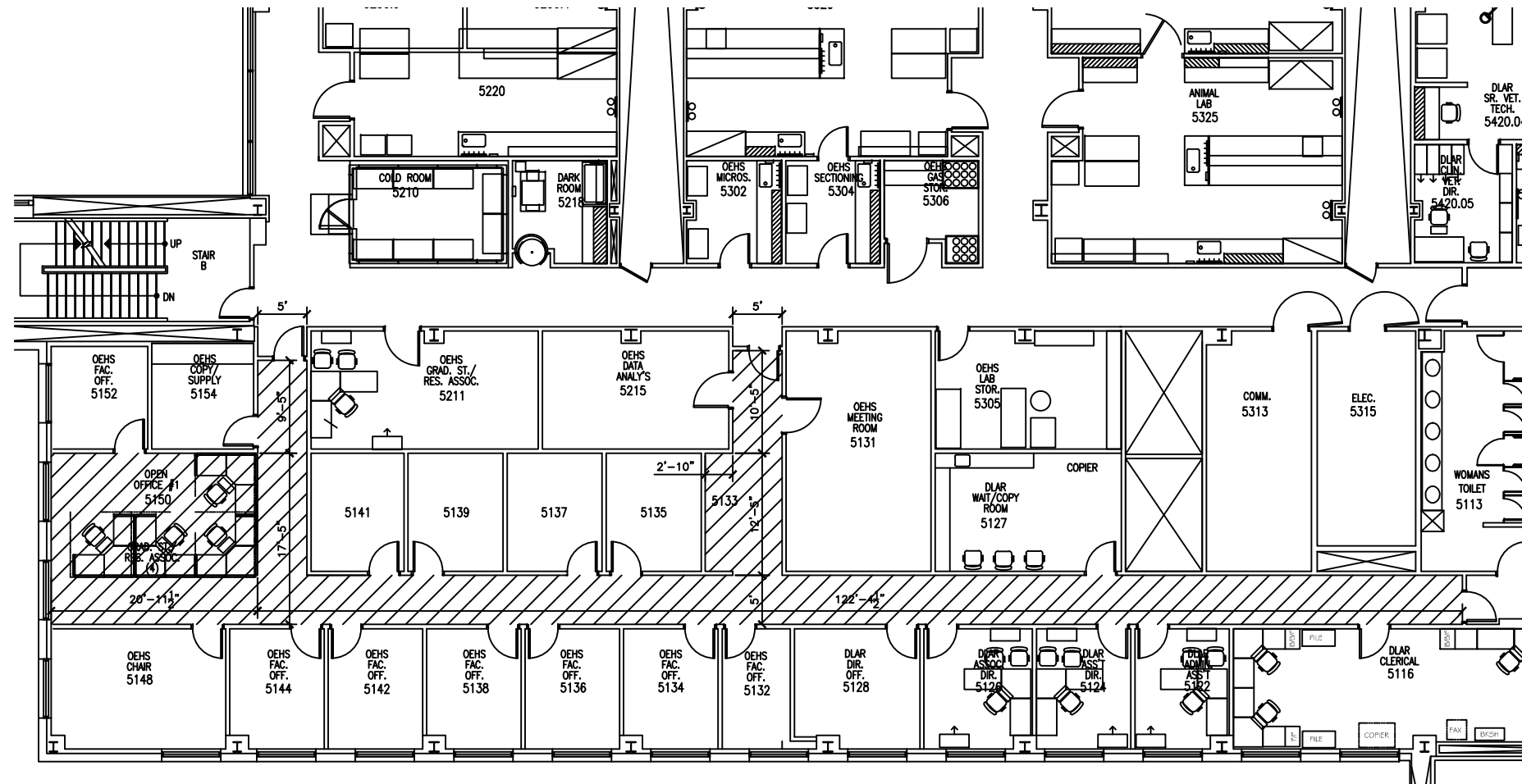
DISCLAIMER: WAYNE STATE UNIVERSITY, FACILITIES PLANNING AND MANAGEMENT MAKES THESE DOCUMENTS AVAILABLE ON AN "AS IS" BASIS. THESE DRAWINGS WERE CREATED USING AUTOCAD FROM AUTODESK AND ARE ACCURATE FOR SPACE MANAGEMENT, FLOOR PLAN USE. THE USERS WILL HOLD HARMLESS WSU, ITS OFFICERS, AGENTS, AND EMPLOYEES FROM DAMAGES OR COST, INCLUDING REASONABLE ATTORNEY'S FEES, ARISING FROM THE USE OF THESE DRAWINGS.

Drawn By		
Checked By		
1	Bids	1/6/20
No.	Revision/Issue	Date

Firm Name and Address
Wayne State University
Facilities Planning and Management
Design & Construction Services
5454 Cass Avenue
Detroit, MI 48202

Project Name and Address
PHARM SCI CARPET/FLOOR REPLACEMENT
APPLEBAUM COLLEGE OF PHARMACY & HEALTH SCIENCES
259 MACK, DETROIT, MI

Project Number 603-325262	Sheet A.04
Date 1/6/2020	



SUITE 5100 CORRIDOR / OPEN OFFICE - SUMMER PHASE

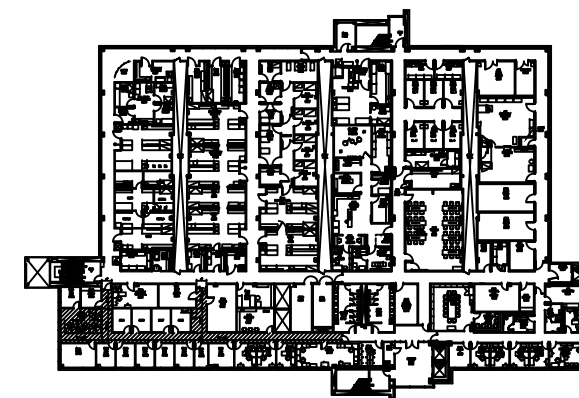
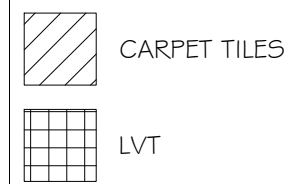
SCALE: 1/16" = 1'-0"

GENERAL NOTES

(TYPICAL ALL SHADED AREAS)

1. REMOVE EXISTING FLOORING AND WALL BASE.
2. INSTALL NEW FLOORING PER LEGEND AND SPECIFICATIONS.
3. INSTALL NEW WALL BASE PER SPECIFICATION.

FLOORING LEGEND



FIFTH FLOOR - VICINITY MAP

NO SCALE

PHARM SCI CARPET/FLOOR REPLACEMENT
FIFTH FLOOR

Drawing Title

General Notes

DISCLAIMER: WAYNE STATE UNIVERSITY, FACILITIES PLANNING AND MANAGEMENT MAKES THESE DOCUMENTS AVAILABLE ON AN "AS IS" BASIS. THESE DRAWINGS WERE CREATED USING AUTOCAD FROM AUTODESK AND ARE ACCURATE FOR SPACE MANAGEMENT, FLOOR PLAN USE. THE USERS WILL HOLD HARMLESS WSU, ITS OFFICERS, AGENTS, AND EMPLOYEES FROM DAMAGES OR COST, INCLUDING REASONABLE ATTORNEY'S FEES, ARISING FROM THE USE OF THESE DRAWINGS.

Drawn By

Checked By

No.	Revision/Issue	Date
1	Bids	1/6/20

Firm Name and Address

Wayne State University
Facilities Planning and Management
Design & Construction Services
5454 Cass Avenue
Detroit, MI 48202

Project Name and Address

PHARM SCI CARPET/FLOOR REPLACEMENT
APPLEBAUM COLLEGE OF PHARMACY & HEALTH SCIENCES
259 MACK, DETROIT, MI

Project Number

603-325262

Date
1/6/2020

Sheet

A.05