

# Wayne State University

## Demolition at 5959 Woodward Ave

5959 Woodward Avenue  
Detroit, MI

Issued for Construction Documents March 8, 2024  
Project Number 231581



fishbeck.com 1001 Woodward Avenue, Suite 860  
313.293.3550 Detroit, Michigan

### INDEX OF SHEETS:

- |   |                                     |
|---|-------------------------------------|
| 1 | TITLE                               |
| 2 | NOTES                               |
| 3 | SURVEY AND EXISTING CONDITIONS PLAN |
| 4 | REMOVAL AND SESC PLAN               |
| 5 | CONSTRUCTION PLAN                   |
| 6 | DETAIL                              |

### Standards and Specifications Reference - Not To Be Printed

- MDOT 2020 STANDARD SPECIFICATIONS FOR CONSTRUCTION
- 2011 MICHIGAN MANUAL ON UNIFORM TRAFFIC CONTROL DEVICES
- 2010 ADA STANDARDS FOR ACCESSIBLE DESIGN
- CITY OF DETROIT STANDARD SPECIFICATIONS FOR PAVING AND RELATED CONSTRUCTION
- CITY OF DETROIT STREET AND ALLEY PLANS
- CITY OF DETROIT FIELD MARKING STANDARDS
- WAYNE COUNTY DESIGN OFFICE STANDARDS
- WSU C&IT STANDARDS FOR COMMUNICATIONS INFRASTRUCTURE

### SCOPE OF WORK

DEMOLITION OF 5959 WOODWARD AVENUE BUILDING AND PARKING LOT. BUILDING IS A STANDALONE, ONE STORY, 6,045 SQUARE-FOOT STRUCTURE BUILT ON GRADE. BUILDING AND PARKING LOT WILL BE RESTORED WITH GRASS. SCOPE ALSO INCLUDES STORM SEWER WORK.

PROJECT WILL SUPPLY STANCHION, SALVAGE AND RETURN OLD PHONE TO C&IT. PROJECT WILL ORDER / INSTALL CAMERAS NEEDED FOR BLP AND PURCHASE / PROVIDE ANY OTHER ITEMS REQUIRED BY CIT.GG TO COORDINATE DIRECTLY WITH CIT DURING INSTALLATION. CIT WILL ORDER WAP AND DIAL TONE.

### PROJECT DIRECTORY

#### DESIGN MANAGER

ARIEL SUAREZ  
PHONE: 313.577.3038  
EMAIL: HQ2836@WAYNE.EDU

#### FISHBECK ARCHITECTS/ENGINEERS

KATERINA KOLLAR, PE, CIVIL ENGINEER, PROJECT MANAGER  
PHONE: 248.214.7944  
EMAIL: KKOLLAR@FISHBECK.COM

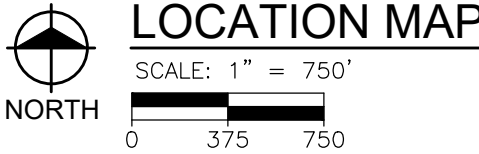
DANIELLE ISENOGLE, AIA, NCARB, CDT, ARCHITECT  
PHONE: 248.324.2149  
EMAIL: DISENOGLE@FISHBECK.COM

JERRY HIRTH, PE, MECHANICAL ENGINEER  
PHONE: 248.756.1513  
EMAIL: JLHIRTH@FISHBECK.COM

JAMES MILOCH, PE, LEED AP, ELECTRICAL ENGINEER  
PHONE: 248.324.2127  
EMAIL: JMILOCH@FISHBECK.COM

ANDERS FRANZON, CIVIL ENGINEER  
PHONE: 313.293.3548  
EMAIL: AOFRANZON@FISHBECK.COM

### LOCATION MAP



### UTILITY INFORMATION

THE EXISTING UTILITIES SHOWN ON THE FOLLOWING DRAWINGS HAVE BEEN LOCATED FROM UTILITY RECORD DRAWINGS. ACTUAL UTILITY LOCATIONS MAY VARY FROM WHAT IS SHOWN. ALL UTILITIES TO BE FIELD VERIFIED BY UTILITY OWNER PRIOR TO CONSTRUCTION.

#### CITY OF DETROIT

DETROIT WATER & SEWERAGE  
6425 HUBER  
DETROIT, MI 48211  
EMERGENCY CUSTOMER SERVICE:  
313.267.8000  
HANNAH SLABAUGH  
Phone: 313.267.8000  
HANNAH.SLABAUGH@DETROITMI.GOV

PUBLIC LIGHTING AUTHORITY  
BEN BARKER  
400 MONROE, SUITE 485  
DETROIT, MI 48226  
Phone: 313.324.8291  
ABARKER@PLADETROIT.ORG

GREAT LAKES WATER AUTHORITY  
ATTN: ANUPAM KUMAR  
6425 HUBER STREET 1ST FLOOR  
DETROIT, MICHIGAN 48211  
PHONE: 313.267.4857  
ANUMPAM.KUMAR@GLWATER.ORG

CITY OF DETROIT  
DETROIT FIRE DEPARTMENT  
1301 THIRD STREET  
DETROIT, MI 48226  
PHONE: 313.596.2920  
FAX: 313.224.4128  
COMMUNITYRELATIONS@DETROITMI.GOV  
EMERGENCY MEDICAL SERVICES:  
313.596.5180

CITY OF DETROIT  
DETROIT POLICE DEPARTMENT  
1301 3RD STREET  
DETROIT, MI 48226  
GENERAL: (313) 596-2200  
FAX: (313)596-1450  
PUBLICINFO@DETROITMI.GOV

#### CABLE/ TELEPHONE

SIGMA NETWORK SERVICES (COMCAST C&TV)  
JEFF DOBIES  
25626 TELEGRAPH ROAD  
SOUTHFIELD, MI 48034  
PHONE: 764-359-1669  
SHEILA SCHUCH  
SPECIALIST 2, CONSTRUCTION  
41112 CONCEPT DR  
PLYMOUTH, MI 48170  
PHONE: 248.977.8996 (CELL)  
PHONE: 734.359.1474 (DESK)

AT&T (METRO SOUTH)  
KEVIN ROBERTS  
17651 MICHIGAN AVE, 2ND FLOOR  
DEARBORN, MI 48126  
PHONE: 313.706.3208  
KR639X@ATT.COM

AT&T (METRO)  
DALE DEFEVER  
1000 TOWN CENTER, SUIT 150  
SOUTHFIELD, MI 48075  
PHONE: 586.242.2671  
DD2579@ATT.COM

CENTURY LINK  
KENDAL WILLIAMS-ZETINA  
1005 CINCINNATI, SUITE 1200  
TULSA, OK 74103  
PHONE: 918.547.0547  
KENDAL.ZETINA@CENTURYLINK.COM

CROWN CASTLE  
RONALD GARDNER  
21555 MELROSE AVE SUITE 1  
SOUTHFIELD, MI 48075  
PHONE: 248.430.9027  
PHONE: 248.302.9711  
RONALD.GARDNER@CROWNCastle.COM

EXTENET  
ANN ARROYO  
AARROYO@EXTENETSYSTEMS.COM

VERIZON  
MIKE BRUNING  
32709 MOUND RD  
WARREN, MI 48092  
PHONE: 248.794.7906  
MICHAEL.BRUNING@VERIZONWIRELESS.COM

HIGH VOLTAGE ELECTRIC  
INTERNATIONAL TRANSMISSION COMPANY (ITC)  
CHANELLE THOMAS (UNDERGROUND)  
27175 ENERGY WAY  
NOVI, MI 48377  
PHONE: 248.946.3498  
CTHOMAS@ITCTRANSCO.COM  
ERIN KEELER (OVERHEAD)  
PHONE: 248.946.3298  
EKEELER@ITCTRANSCO.COM  
ADELAIDE PASCARIS (SR. AREA MANAGER)  
PHONE: 248.469.2131  
APASCARIS@ITCTRANSCO.COM

PUBLIC LIGHTING DEPARTMENT (PLD)  
JOHN PRYMACK  
1301 3RD STREET  
DETROIT, MI 48226  
PHONE: 313.267.7210  
FAX: 313.267.8153  
EMAIL: PRYMACK.J@DETROITMI.GOV  
EMERGENCY 24 HOUR SERVICE: 313.224.0500

### SEAL



*Katerina Kollar*



WAYNE STATE  
UNIVERSITY



Wayne State University

DEMOLITION AT 5959 WOODWARD AVE

### REVISIONS

|            |            |
|------------|------------|
| 02/15/2024 | CD'S       |
| 12/20/2023 | WSU REVIEW |

|          |     |
|----------|-----|
| Drawn By | AOF |
| Designer | AOF |
| Reviewer | KK3 |
| Manager  | KK3 |

Hard copy is intended to be 24"x36" when plotted. Scale(s) indicated and graphic quality may not be accurate for any other size.

#### PROJECT NO.

231581

#### SHEET NO.

1

TITLE001

©Copyright 2023  
All Rights Reserved

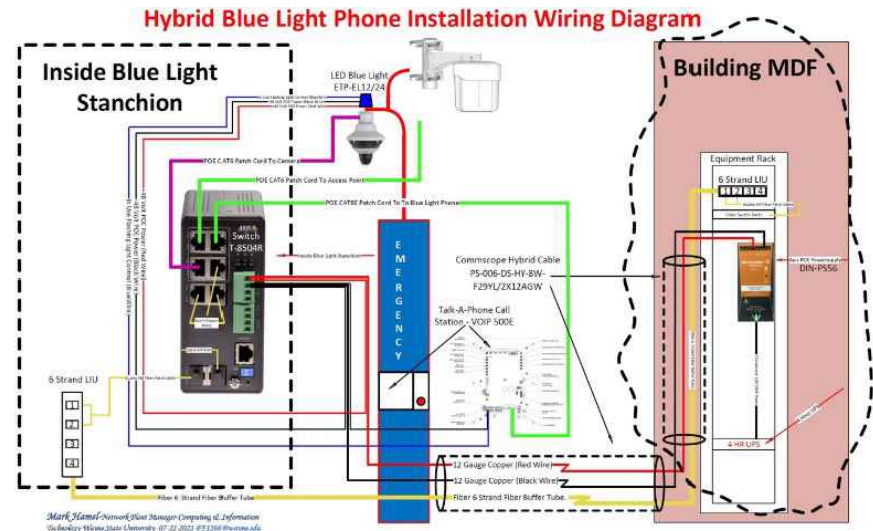


BLUE LIGHT PHONE (BLP) DETAILS

- REFER TO WSU C&IT STANDARDS FOR COMMUNICATIONS INFRASTRUCTURE  
HTTPS://TECH.WAYNE.EDU/DOCS/WSU\_COMMUNICATIONS\_STANDARDS.PDF
- PROJECT WILL ORDER / INSTALL CAMERAS NEEDED FOR BLP AND PURCHASE / PROVIDE ANY OTHER ITEMS REQUIRED BY CIT.GC TO COORDINATE DIRECTLY WITH CIT DURING INSTALLATION. CIT WILL ORDER WAP AND DIAL TONE.
- NEW BLUE LIGHT PHONES WILL BE VOIP TECHNOLOGY, WITH TALKPHONE AS THE APPROVED MANUFACTURER.
- FOUR-HOUR MINIMUM POWER BACKUP (UPS) IS REQUIRED WHERE NO GENERATOR OR EMERGENCY POWER IS PROVIDED BY OTHERS. WSU SPECIFIC INFORMATION REQUIRED WHEN ORDERING STANCHION FROM VENDOR:
  - PMS 281 MIDNIGHT BLUE
  - WHITE EMERGENCY LETTERING
  - 120V
  - CUSTOM WIRELESS ACCESS POINT MOUNTING POLE REQUIRED.
  - CUT SHEET PART NUMBER: ETP-MT/R-OP4P-PCS
  - CONTRACTOR OR THE PROJECT PLACING THE ORDER MUST VERIFY WITH TALKPHONE THAT THE WIRELESS & CAMERA MOUNTING POLE / BRACKET IS INCLUDED IN ORDER.

GENERAL

- ALL BLP COMPONENTS REQUIRE SUBMITTALS AND CIT APPROVAL PRIOR TO PURCHASE.
- ALL REQUIREMENTS FOR BLPs CALLED OUT IN OTHER SECTIONS OF THE STANDARDS MAY APPLY AND SHALL BE COORDINATED INTO FINAL DESIGN AS REQUIRED.
- ALL BLP COMPONENTS SHALL BE PROVIDED AND INSTALLED BY THE CONTRACTOR.
- BLP COMPONENTS, PART NUMBERS AND DESCRIPTIONS MAY CHANGE BASED ON AVAILABILITY AND FINAL DESIGN.
- CIT REQUIRES FINAL REVIEW OF ALL ITEMS PRIOR TO PURCHASE.
- ANY ITEMS PURCHASED WITHOUT SUBMITTALS, REVIEW AND APPROVAL WILL BE AT THE CONTRACTOR'S EXPENSE AND NOT SUBJECT TO REIMBURSEMENT.
- HYBRID WIRING DIAGRAM:



COMPONENTS

- TALK-A-PHONE CALL STATION VOIP-500E
- TALK-A-PHONE ETP-MT/R TOWER (PART NUMBER: ETP-MT/R-OP4P-PCS)
- TALK-A-PHONE LED BLUE LIGHT (PART NUMBER: ETP-EL)
- AXIS Q6010-E IP CAMERA OR BETTER / APPROVED BY C&IT
- AXIS Q6075-E IP PTZ CAMERA OR BETTER / APPROVED BY C&IT
- AXIS T8504-R 4 PORT SWITCH
- AXIS S6V 240W POWER SUPPLY
- AXIS PENDANT KIT
- AXIS THREADED COUPLER
- AXIS ATTACHMENT KIT
- CAT6 5M PATCH CORD / PUSH PULL PATCH CABLE OR EQUIVALENT OUTDOOR CONNECTION AT CAMERA DEPENDING ON CAMERA MANUFACTURER.
- CAT6 1' PATCH CORD FOR RACK SIDE
- (2)- 1M FIBER PATCH CORDS WITH LIKE CONNECTORS LC/LC / RACK SIDE & STANCHION
- STANCHION SIDE - DIN RAIL WITH CONSTRUCTION ADHESIVE
- IT CLOSET SIDE - DIN RAIL KIT
- COMMSCOPE HYBRID S06L12F 5M FIBER W/ 12 AWG (PART # P-004-DS-HY-BW-F29YL/2X12AWG) OR SIMILAR.
- SMALL FIBER WALL MOUNTED LIU TERMINATION BOX FOR STANCHION AND RACK MOUNTED LIU LOADED WITH BULK HEADS.
- (2) SINGLE MODE NETWORK GBIC'S / ONE FOR EACH END / CONSULT C&IT NETWORK ENGINEER & PROJECT MANAGEMENT FOR MANUFACTURER TYPE
- LC SINGLE MODE CONNECTORS (QUANTITY TO MATCH FIBER CABLE)
- UNDERGROUND CONDUIT TO BLP / MINIMUM 1"
- CONCRETE MOUNTING PAD
- SONNET TUBE CONDUIT SLEEVE, GROUNDING AND CONCRETE INDUSTRIAL PLASTICS - CLEAR POLYCARBONATE TUBING - PART # 2.00X2.250X95
- ANY MISSING COMPONENTS ARE THE RESPONSIBILITY OF THE INSTALLING CONTRACTOR.

GENERAL NOTES

- PRIOR TO CONSTRUCTION ALL FENCING, BARRICADES, ENCLOSURES, ETC., MUST BE INSTALLED AND APPROVED BY OWNER OR CONSTRUCTION MANAGER.
- DISPOSE OF DEMOLITION AND EXCAVATION MATERIALS IN ACCORDANCE WITH CONTRACT DOCUMENTS.
- UNLESS SPECIFICALLY NOTED FOR REMOVAL ON THE PLANS, ALL SIDEWALKS, DRIVES, CULVERTS, DRAINAGE STRUCTURES, AND ABOVE AS WELL AS BELOW GRADE UTILITIES SHALL BE PROTECTED. ALL SUCH ITEMS DAMAGED OR DESTROYED DURING CONSTRUCTION SHALL BE REMOVED AND REPLACED WITH NEW AT NO ADDITIONAL COST TO THE OWNER.
- PROTECT EXISTING TREES TO REMAIN WITH TEMPORARY FENCING AT THE DRIP LINE. NO GROUND DISTURBANCE OR STORAGE OF MATERIAL/EQUIPMENT SHALL OCCUR WITHIN THE DRIP LINE LIMITS.
- ELECTRICAL, TELEPHONE, CABLE TV, WATER, FIBER OPTIC CABLE AND/OR GAS LINES NEEDING TO BE REMOVED OR RELOCATED SHALL BE COORDINATED WITH THE AFFECTED UTILITY COMPANY. ADEQUATE TIME SHALL BE PROVIDED FOR RELOCATION AND CLOSE COORDINATION WITH THE UTILITY COMPANY IS NECESSARY TO PROVIDE A SMOOTH TRANSITION IN UTILITY SERVICE. PAY CLOSE ATTENTION TO EXISTING UTILITIES WITHIN THE CONSTRUCTION LIMITS. GIVE NOTICE TO ALL UTILITY COMPANIES REGARDING DESTRUCTION AND REMOVAL OF ALL SERVICE LINES AND CAP ALL LINES BEFORE PROCEEDING WITH THE WORK.
- THE LOCATIONS OF ALL EXISTING UTILITIES SHOWN ON THIS DRAWING HAVE BEEN DETERMINED FROM THE BEST INFORMATION AVAILABLE AND ARE GIVEN FOR THE CONVENIENCE OF THE CONTRACTOR. VERIFY CRITICAL INVERT INFORMATION PRIOR TO BEGINNING CONSTRUCTION.
- DAMAGE CAUSED TO SURROUNDING AREA PAVEMENT OUTSIDE THE CONSTRUCTION LIMITS SHALL BE SAWCUT AND REPLACED AT NO ADDITIONAL COST TO THE OWNER.
- SAWCUT CURB AND GUTTER AND SIDEWALKS TO NEAREST JOINT.
- SECURE AND COMPLY WITH ALL REQUIREMENTS OF ALL PERMITS REQUIRED FOR THIS WORK.
- COORDINATE ALL CONSTRUCTION ACTIVITIES, INCLUDING HOURS OF OPERATION, WITH WAYNE STATE UNIVERSITY AND THE CITY OF DETROIT.
- MAINTAIN ACCESS TO ADJACENT PROPERTIES AT ALL TIMES DURING CONSTRUCTION. PROVIDE TEMPORARY ACCESS PATHS, FENCING, SIGNAGE, AND ALL NECESSARY ITEMS TO ENSURE A SAFE AND CLEARLY DEFINED ACCESS PATH.
- ALL CONSTRUCTION STAGING, MATERIALS STORAGE, CONSTRUCTION WASHING STATIONS, PROJECT MOCK-UP AREAS, AND ALL ASSOCIATED NEEDS ARE THE RESPONSIBILITY OF THE CONTRACTOR. ALL LABOR, MATERIALS AND EQUIPMENT ASSOCIATED WITH THESE ITEMS SHALL BE PROVIDED AS PART OF THE DEMOLITION PAY ITEMS. THE CONTRACTOR SHALL OBTAIN APPROVAL FROM ENGINEER FOR ALL CONSTRUCTION ACCESS POINTS. THE USE OF ADJACENT STREET R.O.W. WILL NOT BE PERMITTED FOR MATERIAL STAGING, STOCK PILING AND CONTRACTOR PARKING WITHOUT PRIOR WRITTEN CONSENT.
- FOR PROTECTION OF UNDERGROUND UTILITIES AND CONFORMANCE WITH PUBLIC ACT 53, AS AMENDED, THE CONTRACTOR SHALL CALL "MISS DIG" AT 1-800-482-7171 A MINIMUM OF THREE FULL WORKING DAYS (72 HOURS), EXCLUDING SATURDAYS, SUNDAYS, AND HOLIDAYS, PRIOR TO BEGINNING CONSTRUCTION ACTIVITIES INCLUDING EACH EXCAVATION IN AREAS WHERE PUBLIC UTILITIES HAVE NOT BEEN PREVIOUSLY LOCATED. "MISS DIG" MEMBERS WILL THUS BE ROUTINELY NOTIFIED. THIS DOES NOT RELIEVE THE CONTRACTOR OF THE RESPONSIBILITY OF NOTIFYING UTILITY OWNERS WHO MAY NOT BE A PART OF THE "MISS DIG" ALERT SYSTEM.
- EXISTING SURVEY MONUMENTS SHALL BE PROTECTED DURING CONSTRUCTION OPERATIONS. IN THE EVENT EXISTING MONUMENTS ARE DISTURBED DURING CONSTRUCTION, THE MONUMENTS SHALL BE RESTORED TO PRE-CONSTRUCTION CONDITION AND PER CITY OF DETROIT SURVEY BUREAU REQUIREMENTS AT NO COST TO THE OWNER. NOTIFY CITY OF DETROIT SURVEY BUREAU OF ANY DISTURBED OR RESET MONUMENTS.
- ANY MISCELLANEOUS LITTER AND DEBRIS INCLUDING SUCH ITEMS BUT NOT LIMITED TO: FOUNDATION AND ATTACHMENTS, TREE STUMPS AND ROOT STRUCTURES, PAVEMENT BASE MATERIAL, ABANDONED FENCES, ABANDONED PIPES, CONSTRUCTION DEBRIS, TRASH, ETC. IDENTIFIED ON THE PLANS AND ENCOUNTERED WITHIN THE PROJECT LIMITS SHALL BE REMOVED AND DISPOSED OF LEGALLY OFF-SITE BY THE CONTRACTOR. ALL LABOR, MATERIALS AND EQUIPMENT REQUIRED TO COMPLETE THIS WORK SHALL BE PAID AS PART OF THE PAY ITEM LITTER AND DEBRIS, REM.
- SAW CUT LINES FOR NEW PAVEMENT SHALL BE CUT STRAIGHT LEAVING A CONSISTENT, SMOOTH EDGE ALONG THE EXISTING PAVEMENT TO REMAIN. NEW PAVEMENT TO DIRECTLY ABUT EXISTING PAVEMENT TO REMAIN. IF NECESSARY OR AS DIRECTED BY THE ENGINEER RE-SAW CUT THE PAVEMENT IF THE EDGE OF THE PAVEMENT IS DAMAGED BY CONSTRUCTION ACTIVITIES. ADDITIONAL SAW CUTS AND THE REQUIRED ADDITIONAL PAVEMENT REPLACEMENT IS INCLUDED AS PART OF THE ORIGINAL PAY ITEM AND SHALL BE PROVIDED AT NO ADDITIONAL COST TO THE OWNER.

DEMOLITION & EROSION CONTROL NOTES

- MAINTAIN AND REPAIR ALL SESC BEST MANAGEMENT PRACTICES BWMPs DURING CONSTRUCTION UNTIL ALL VEGETATION IS ESTABLISHED. (ALL DISTURBED SOIL SURFACES ARE UNIFORMLY COVERED IN PERMANENT VEGETATION WITH A DENSITY OF 70% OR GREATER, OR AS DEFINED BY PERMIT.)
- PERFORM ALL EARTH-DISTURBING CONSTRUCTION ACTIVITIES WITHIN THE LIMITS OF DISTURBANCE AS INDICATED ON THE DRAWINGS.
- REVIEW THE LIMITS OF DISTURBANCE SHOWN ON THE DRAWINGS AND FIELD-STAKING THE LIMIT OF DISTURBANCE LINE PRIOR TO THE START OF CONSTRUCTION AND/OR CONTRACTORS OPERATIONS AT NO ADDITIONAL COST TO OWNER.
- INSTALL PERIMETER EROSION AND SEDIMENT CONTROL MEASURES PRIOR TO THE START OF ANY LAND CLEARING OR GRADING ACTIVITIES.
- APPLY TEMPORARY EROSION AND SEDIMENTATION CONTROL MEASURES AS SHOWN ON THE DRAWINGS AND/OR AS REQUIRED BY SESC PERMIT AND IMPLEMENT ADDITIONAL MEASURES AS DICTATED BY SITE CONDITIONS.
- ENSURE THAT ANY SEDIMENTATION RESULTING FROM WORK ON THIS SITE IS CONTAINED ON THE SITE AND NOT ALLOWED TO COLLECT ON ANY OFF-SITE AREAS OR IN WATERWAYS.
- THE EXTENT OF REMOVALS AND DEMOLITION SHALL BE FIELD VERIFIED BY CONSTRUCTION MANAGER PRIOR TO CONSTRUCTION. NOTIFY ENGINEER OF ANY DEVIATIONS FROM INFORMATION SHOWN.

SITE LAYOUT NOTES

- DIMENSIONS ARE TO BACK OF CURB, OUTSIDE FACE OF BUILDING, AND EDGE OF PAVEMENT UNLESS NOTED OTHERWISE.
- KEEP THE APPROVED AND/OR MOST CURRENT SET OF PROJECT DRAWINGS ON SITE AT ALL TIMES. CONTRACTOR TO CONFIRM THEY ARE IN POSSESSION OF THE MOST CURRENT DRAWING FILES.

UTILITY NOTES

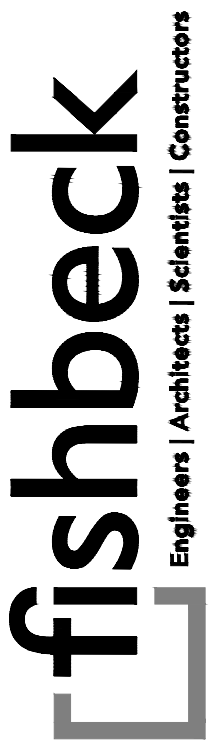
- EXISTING UTILITY LOCATIONS SHOWN ARE APPROXIMATE.
- VERIFY THE HORIZONTAL AND VERTICAL LOCATION OF EXISTING UTILITIES PRIOR TO EXCAVATION WHERE NECESSARY TO AVOID SCHEDULE RISKS.
- PROTECT AND MAINTAIN SERVICE OF OTHER UTILITIES AT CROSSINGS.
- DO NOT CONNECT ROOF DRAINS, FOUNDATION DRAINS, AND OTHER CLEAN WATER SERVICES TO THE SANITARY SEWER.
- PROVIDE AND MAINTAIN INLET FILTERS AT ALL CATCH BASIN INLETS, DURING CONSTRUCTION.
- PROVIDE A MINIMUM OF EIGHTEEN (18) INCHES OF VERTICAL SEPARATION AND TEN (10) FEET OF HORIZONTAL SEPARATION BETWEEN THE WATER MAIN AND ALL SANITARY AND STORM SEWERS.
- ADJUST ALL CASTINGS TO FINISH GRADES.
- PIPE LENGTHS ARE TO CENTER OF STRUCTURES UNLESS NOTED OTHERWISE. ALL PIPE LENGTHS ARE FOR THE CONVENIENCE OF THE CONTRACTOR.
- STORM SEWER WORK INDICATED ON THESE DRAWINGS SHALL REQUIRE A DETROIT WATER AND SEWERAGE DEPARTMENT (DWS) PERMIT TO BE OBTAINED BY THE CONTRACTOR. NOTIFY AND COORDINATE WITH MOHAMED BOUDALI PERMIT INSPECTOR (313-267-1375) A MINIMUM OF 48 HOURS PRIOR TO THE INITIATION OF STORM SEWER CONSTRUCTION WORK.
- IN COMPLIANCE WITH PUBLIC ACT 53 OF THE STATE OF MICHIGAN (EFFECTIVE) AUGUST 1, 1974, AS AMENDED, NOTIFY IN ADVANCE OF CONSTRUCTION (72 HOURS/ 3 WORKING DAYS) ALL PUBLIC AND PRIVATE UTILITY PROVIDERS HAVING FACILITIES IN OR NEAR THE IMMEDIATE WORKING AREA, FOR CONVENIENCE THEY ARE IDENTIFIED ON THE ENCLOSED UTILITY PROVIDER LIST. THE LISTING DOES NOT, HOWEVER, RELIEVE THE CONTRACTOR OF THE RESPONSIBILITY OF VERIFYING THE UTILITY LOCATIONS AND NOTIFYING ALL UTILITY OWNERS AND MISS DIG (1-800-482-7171).
- ALL WORK TO BE LAID OUT PER STATION (STA) AND OFFSET (OFF) FROM HORIZONTAL CONTROL ALIGNMENT. OFFSETS FOR DRAINAGE STRUCTURES ARE TO BE CENTER OF STRUCTURE.
- REPLACE SIDEWALKS, CURBS AND PAVEMENT DISTURBED AS PART OF UTILITY WORK OR OTHER CONSTRUCTION ACTIVITIES AND MATCH EXISTING CONDITIONS. PAVEMENT REMOVAL, TRENCHING, BACKFILL, PAVEMENT REPLACEMENT AND OTHER ASSOCIATED WORK AND MATERIALS REQUIRED FOR THE ADJUSTMENT, REMOVAL, REPLACEMENT AND INSTALLATION THAT IS NOT SHOWN ON THE DEMOLITION PLANS OR MATERIAL PLANS SHALL BE INCIDENTAL TO THE UTILITY LINE AND/OR STRUCTURE PAY ITEM.
- UTILITY ADJUSTMENTS REQUIRED TO COMPLETE THE PROJECT ARE TO BE COORDINATED BY THE CONTRACTOR WITH THE INDIVIDUAL UTILITY PROVIDERS.
- REVIEW, PERMIT AND INSPECTION FEES REQUIRED TO PERFORM THE UTILITY WORK SHALL BE COORDINATED BY THE CONTRACTOR AND SHALL BE INCLUDED IN THE BID.
- ADJUST ALL SEWER, WATER AND ELECTRICAL STRUCTURES OR INFRASTRUCTURE AS INDICATED ON DRAWINGS. COORDINATE WITH APPROPRIATE CITY DEPARTMENTS AS NECESSARY.
- COORDINATE ADJUSTMENT OF ALL GAS, STEAM, FIBER AND COMMUNICATION STRUCTURES OR INFRASTRUCTURE WITH APPROPRIATE UTILITY PROVIDER. APPROPRIATE UTILITY PROVIDER TO MAKE ANY ADJUSTMENTS TO GAS, STEAM, FIBER AND COMMUNICATION STRUCTURES AS NECESSARY.
- RELOCATION OF UTILITY POLES TO BE COORDINATED WITH DETROIT PUBLIC LIGHTING AUTHORITY (PLA) AND DTE ENERGY.
- ALL SEWER MANHOLES SHALL BE PRECAST CONCRETE IN ACCORDANCE WITH ASTM C478 WITH ECCENTRIC CONE OR FLAT-SLAB-TOP AS INDICATED.
- PIPE CONNECTORS AT MANHOLES TO BE IN ACCORDANCE WITH ASTM C923, OR PER PIPE MANUFACTURER'S AND DWSO SPECIFICATIONS.
- SEWER PIPE TO BE REINFORCED CONCRETE PIPE CONFORMING TO ASTM C76, CLASS IV, WALL 8, MINIMUM INSIDE DIAMETER TO BE 8 INCHES OR PVC, ASTM D3034, SDR26 FOR SIZES 8 INCHES AND SMALLER.
- PROPOSED INVERT FOR NEW SEWER CONNECTIONS TO EXISTING PIPES NOT AT EXISTING MANHOLES ARE ESTIMATED. VERIFY INVERT ELEVATIONS IN THE FIELD PRIOR TO THE START OF CONSTRUCTION.
- EXISTING OUTLET SEWER INVERT ELEVATIONS TO BE FIELD VERIFIED.
- EXTENSIONS OF EXISTING SEWER PIPE TO BE PERFORMED USING PIPE MATERIALS AND DIAMETERS TO MATCH THE EXISTING SEWER.
- FOR ALL DIRECT TAPS TO EXISTING STRUCTURES, FIELD CORE DRILL EXISTING STRUCTURE TO ACCOMMODATE PROPOSED PIPE SIZE. GROUT PIPE OPENING TO BE WATERTIGHT.
- ALL MANHOLE AND CATCH BASIN COVERS SHALL BE BOLTED DOWN.

GRADING NOTES

- FINISH GRADE OF SOIL EDGES ALONG PAVEMENT TO MATCH EDGE OF PAVEMENT.
- GRADES SHOWN ARE FINAL SURFACE GRADES AFTER COMPLETION OF SURFACE IMPROVEMENTS AND PLACEMENT OF TOPSOIL.
- GRADE AREAS AT SITE PERIMETER TO MATCH GRADES OF ADJACENT PARCELS.
- REMOVE EXCESS SOIL FROM SITE AND DISPOSE OF PROPERLY IN ACCORDANCE WITH APPLICABLE REGULATIONS.
- PROVIDE DRAINAGE AWAY FROM ALL PAVED SURFACES AS SHOWN ON THE DRAWINGS OR AS DIRECTED BY THE ENGINEER. ENSURE ALL AREAS WILL PROPERLY DRAIN TO NEAREST INLET WITHOUT STANDING OR PONDING WATER.
- NOTIFY THE ENGINEER OF ANY DISCREPANCIES BETWEEN THE SURVEY GRADES AND THE ACTUAL SITE ELEVATIONS. ANY AREAS OF POOR DRAINAGE OR INADEQUATE DRAINAGE FROM PROPOSED IMPROVEMENTS SHALL BE BROUGHT TO THE ATTENTION OF THE ENGINEER AND SHALL BE MODIFIED AS REQUIRED AND APPROVED.
- MEET EXISTING GRADE WITHIN THE ROADWAY AT THE SAW CUT LINE.
- PROVIDE MINIMUM CROSS-SLOPE OF 1%, MAXIMUM CROSS-SLOPE OF 2%, AND MAXIMUM LONGITUDINAL SLOPE OF 5% (EXCEPT WHERE NOTED) ON SIDEWALKS (INCLUSIVE OF ALL SPECIFIED TOLERANCES).
- GRADE ALL PAVEMENT SURFACES UNIFORMLY BETWEEN SPOT ELEVATIONS NOTED ON THE PLANS. (EXCEPT WHERE NOTED OTHERWISE)
- ALL PERMANENT IMPROVEMENTS SHALL BE LOCATED WITHIN WAYNE STATE UNIVERSITY PROPERTY.
- CONTRACTOR TO VERIFY ALL EXISTING SPOT ELEVATIONS ALONG LIMITS OF EXISTING AND NEW PAVEMENT WHERE THE GRADING PLANS NOTE MEET EXISTING (M.E.). NOTIFY THE ENGINEER OF ANY INCONSISTENCIES, DRAINAGE ISSUES, OR SLOPE DISCREPANCIES.



WAYNE STATE  
UNIVERSITY



Wayne State University

DEMOLITION AT 5959 WOODWARD AVE

REVISIONS

|            |            |
|------------|------------|
| 02/15/2024 | CD'S       |
| 12/20/2023 | WSU REVIEW |

|          |     |
|----------|-----|
| Drawn By | AOF |
| Designer | AOF |
| Reviewer | KK3 |
| Manager  | KK3 |

Hard copy is intended to be 24"x36" when plotted. Scale(s) indicated and graphic quality may not be accurate for any other size.

PROJECT NO.

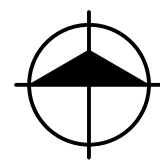
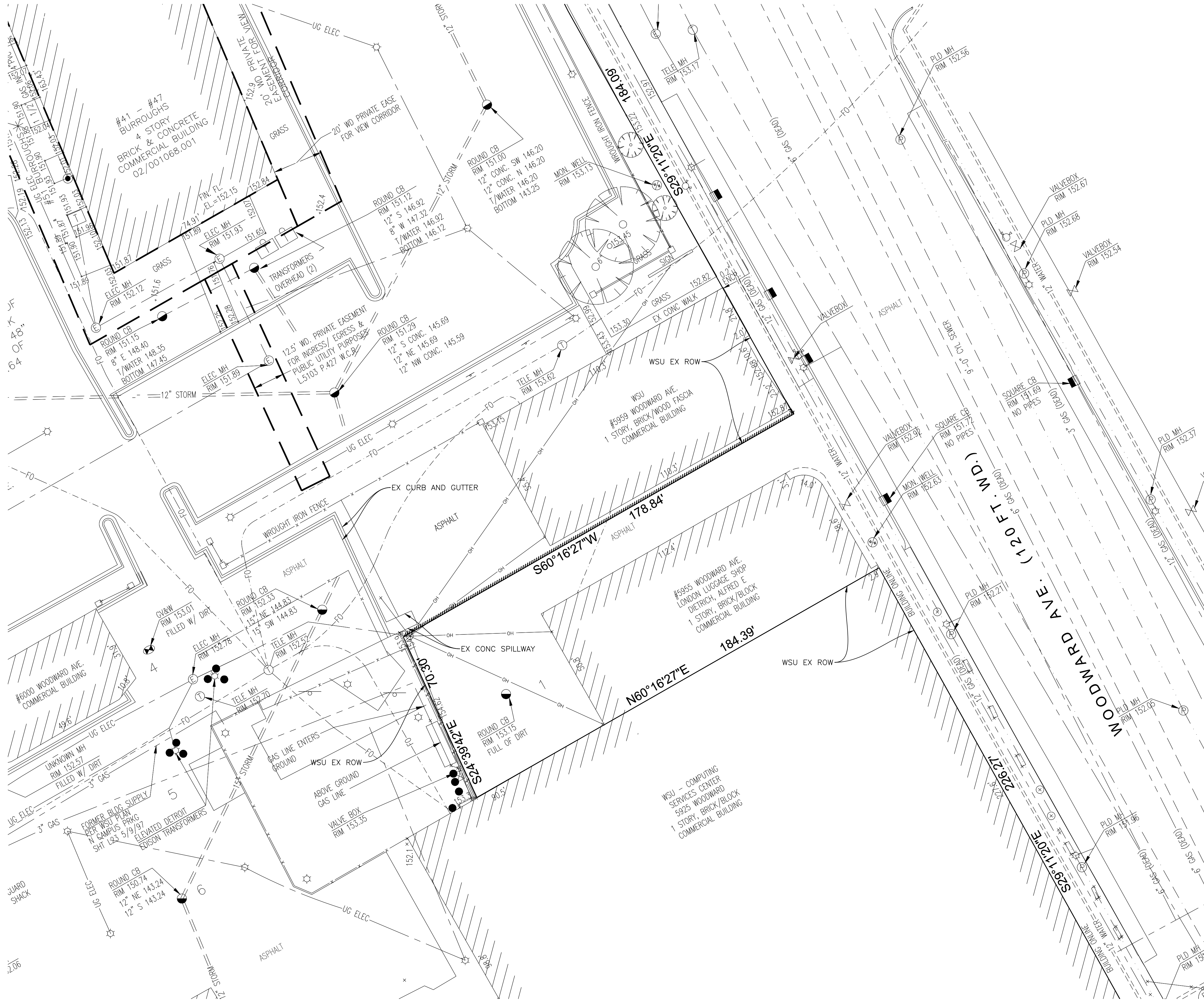
231581

SHEET NO.

2

NOTE001





### EXISTING CONDITIONS AND SURVEY PLAN

SCALE: 1" = 20'  
0 10 20 40

| LEGEND |                             |
|--------|-----------------------------|
|        | BENCHMARK                   |
|        | TRAVERSE POINT              |
|        | STORM SEWER MANHOLE         |
|        | SQUARE CATCH BASIN          |
|        | ROUND CATCH BASIN           |
|        | BEEHIVE CATCH BASIN         |
|        | CULVERT                     |
|        | STORM SEWER (SIZE)          |
|        | SANITARY SEWER MANHOLE      |
|        | CLEAN OUT                   |
|        | SANITARY SEWER (SIZE)       |
|        | STEAM MANHOLE               |
|        | STEAM LINE (SIZE)           |
|        | HYDRANT                     |
|        | GATE VALVE AND WELL         |
|        | WATER VALVE                 |
|        | WATER STOP BOX              |
|        | VALVE BOX                   |
|        | POST INDICATOR VALVE        |
|        | DETROIT FIRE DEPT. MANHOLE  |
|        | WATER METER                 |
|        | WATER MONITORING WELL       |
|        | IRRIGATION VALVE BOX        |
|        | SPRINKLER HEAD              |
|        | WATER MAIN (SIZE)           |
|        | ELECTRIC MANHOLE            |
|        | ELECTRIC PEDESTAL           |
|        | ELECTRIC HANDHOLE           |
|        | UNDERGROUND ELECTRIC        |
|        | TELEPHONE MANHOLE           |
|        | TELEPHONE PEDESTAL          |
|        | UNDERGROUND TELEPHONE       |
|        | CABLE MANHOLE               |
|        | CABLE PEDESTAL              |
|        | UNDERGROUND CABLE           |
|        | GAS VALVE                   |
|        | GAS RISER                   |
|        | GAS MANHOLE                 |
|        | GAS METER                   |
|        | GAS MAIN (SIZE)             |
|        | PUBLIC LIGHTING MANHOLE     |
|        | TRAFFIC SIGNAL              |
|        | AERIAL TRAFFIC SIGNAL       |
|        | SIGNAL CONTROL BOX          |
|        | CROSSWALK SIGNAL            |
|        | UNDERGROUND PUBLIC LIGHTING |
|        | MANHOLE                     |
|        | UNDERGROUND FIBER OPTIC     |
|        | UTILITY POLE                |
|        | GUY ANCHOR                  |
|        | LIGHT POLE                  |
|        | OVERHEAD UTILITIES          |
|        | BOLLARD                     |
|        | PARKING METER               |
|        | SIGN                        |
|        | RAILROAD CONTROL BOX        |
|        | RAILROAD CROSSING SIGN      |
|        | DECIDUOUS TREE              |
|        | CONIFEROUS TREE             |
|        | DECIDUOUS BUSH              |
|        | CONIFEROUS BUSH             |
|        | TREE STUMP                  |
|        | TREE LINE                   |
|        | CHAINLINK FENCE             |
|        | METAL/IRON FENCE            |
|        | WOOD FENCE                  |
|        | GUARDRAIL                   |
|        | PROPERTY LINE               |
|        | FOUND IRON ROD              |
|        | FOUND MONUMENT              |
|        | FOUND P.K. NAIL             |
|        | FOUND MAG NAIL              |
|        | SET IRON ROD                |
|        | SET MONUMENT                |
|        | SET P.K. NAIL               |
|        | SET MAG NAIL                |
|        | SPOT ELEVATION              |
|        | TOP OF WALL ELEVATION       |
|        | CURB CUT ELEVATION          |
|        | UNDERGROUND                 |
|        | FINISHED FLOOR ELEVATION    |
|        | MEASURED                    |
|        | RECORD                      |
|        | CALCULATED                  |

### NOTES

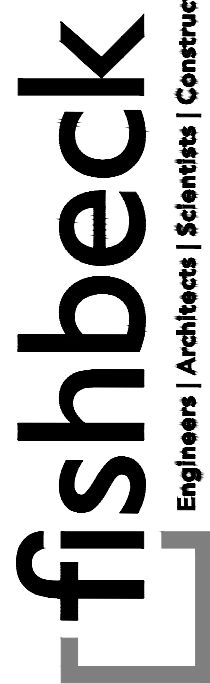
1. SURVEY PROVIDED BY GREAT LAKES GEOMATICS LLC.  
DATE: 12/21/2011  
FILE NAME: 2007 11-121 WSU CSC - Topo 2010 rev 04262013
2. SURVEY PROVIDED FOR REFERENCE ONLY. NOT ALL ITEMS ARE TO SCALE OR IN EXACT LOCATION. SURVEY HAS BEEN UPDATED FROM AERIAL IMAGE TO SHOW CURRENT EXISTING CONDITIONS.

### FLOOD NOTE

1. EXAMINATION OF THE FLOOD INSURANCE RATE MAP (COMMUNITY - PANEL NUMBER 260222 0030 B, DATE JULY 2, 1981) IN ACCORDANCE WITH THE NATIONAL FLOOD INSURANCE PROGRAM OF 1968 INDICATES SUBJECT PROPERTY LIES WITHIN ZONE "C", (AREA OF MINIMAL FLOODING).



WAYNE STATE  
UNIVERSITY



Engineers | Architects | Scientists | Constructors

## Wayne State University

DEMOLITION AT 5959 WOODWARD AVE

### REVISIONS

02/15/2024 CD/S  
12/20/2023 WSU REVIEW

Drawn By AOF  
Designer AOF  
Reviewer KK3  
Manager KK3

Hard copy is intended to be 24"x36" when plotted. Scale(s) indicated and graphic quality may not be accurate for any other size.

PROJECT NO.

231581

SHEET NO.

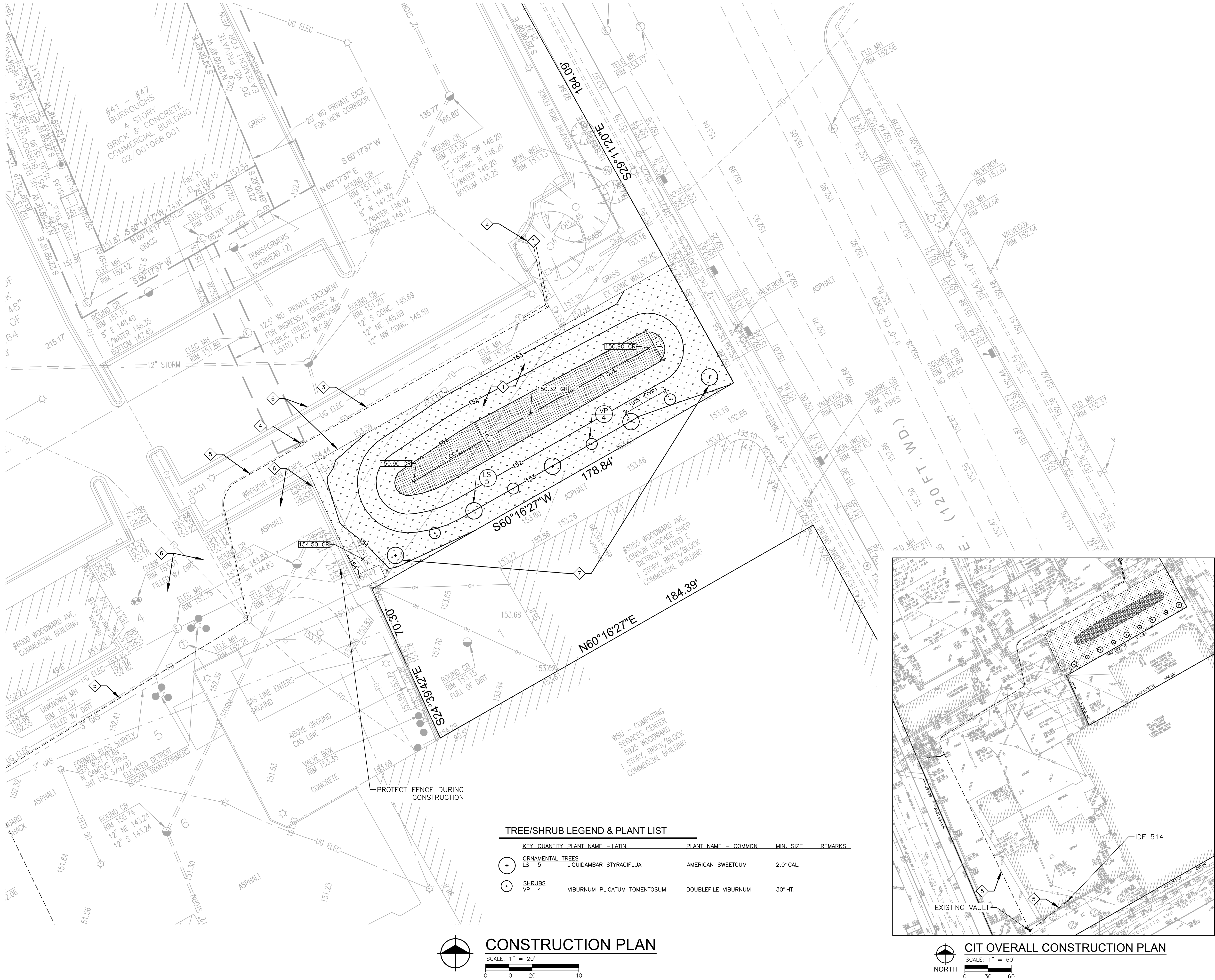
3

EXCON001









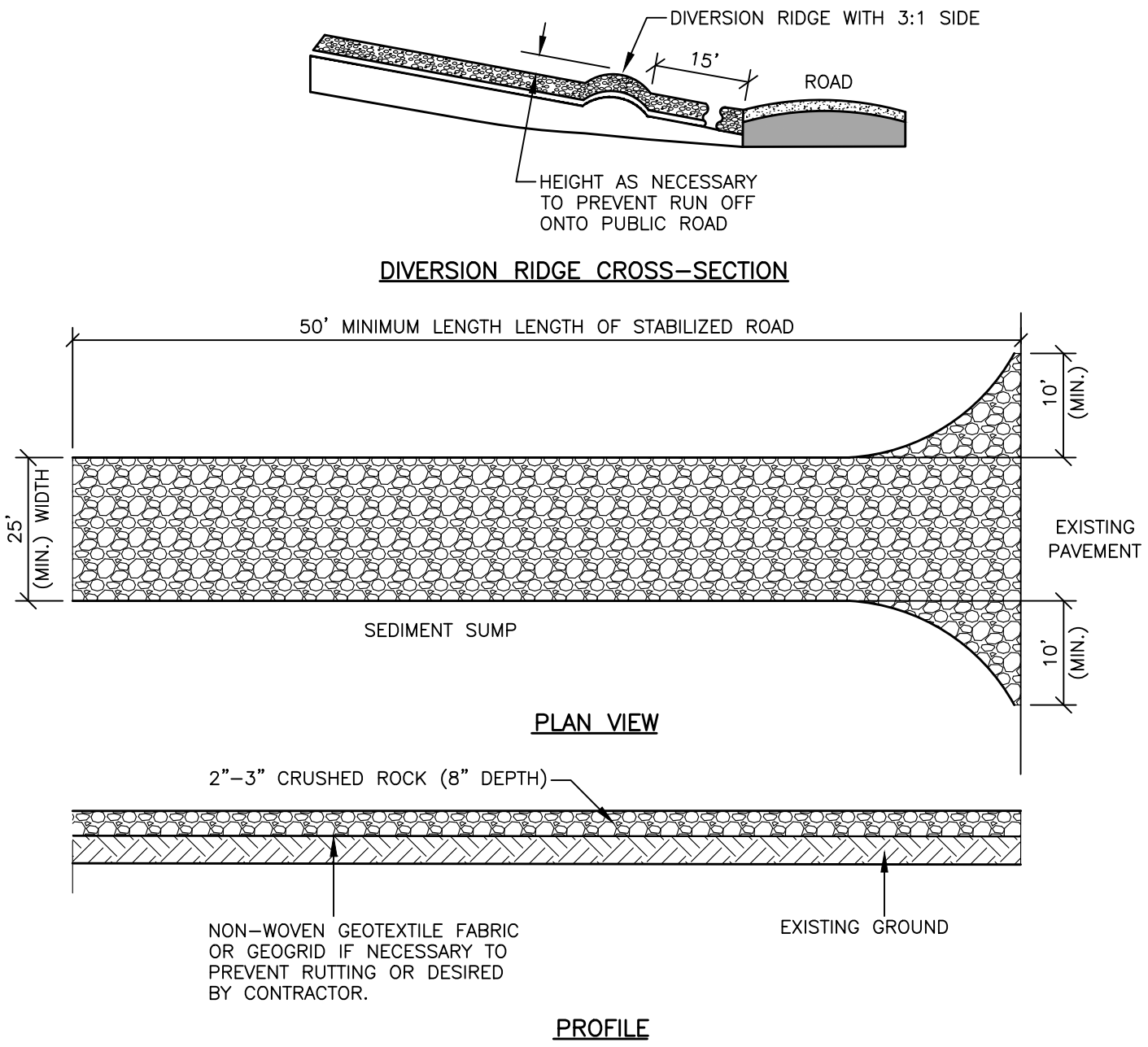
- SYMBOL LEGEND**
- TOPSOIL, SEED AND MULCH (SEE DETAIL SHEET FOR DETAIL)
  - RAIN GARDEN MIX (SEE DETAIL SHEET FOR DETAIL)
  - PROPOSED CONTOUR MAJOR
  - PROPOSED CONTOUR MINOR
  - PROPOSED RAIN GARDEN CENTER

- KEY NOTES**
- BACKFILL ANY VOIDS WITH CLEAN EMBANKMENT AND COMPACT. GRADE DISTURBED AREAS TO PROVIDE A UNIFORM AND NATURAL LOOKING SURFACE. RESTORE ALL DISTURBED AREAS WITH A MINIMUM OF 4 INCHES OF TOPSOIL, SEED AND MULCH OR RAIN GARDEN MIX.
  - NEW BLUE LIGHT PHONE (BLP) STANCHION, FACING THE SIDEWALK (WEST). REFER TO NOTES 002 FOR BLP DETAILS.
  - NEW HYBRID CABLE IN 1-1/2" C TO EXISTING QUARTZITE BOX FOR FIBER AND POWER.
  - EXTEND HYBRID CABLE IN EXISTING RACEWAY VIA EXISTING VAULTS TO IDF 514.
  - EXISTING CONDUIT PATH TO IDF 514. REFER TO DRAWING 2 NOTE001 FOR HYBRID CABLE SPECIFICATION. COORDINATE UNDERGROUND CONDUIT WORK ACCESS TO THE DATA CENTER WITH PLANT MANAGER MARK HAMEL (313) 577-1525
  - STAGING AREA - PROTECT EXISTING PAVEMENT, CURB, LANDSCAPING AT ENTRY POINT TO SITE. RESTORE SITE TO EXISTING CONDITIONS UPON COMPLETION OF CONSTRUCTION. CONTRACTOR IS RESPONSIBLE TO REPAIR ANY DAMAGE TO EXISTING PAVEMENT OR CURB.
  - INSTALL TREES/SHRUBS ALONG PROPERTY LINE.

- PLANT KEY**
- TREE SYMBOL
  - TREE TYPE KEY - SEE PLANT LIST - THIS SHEET
  - QUANTITY



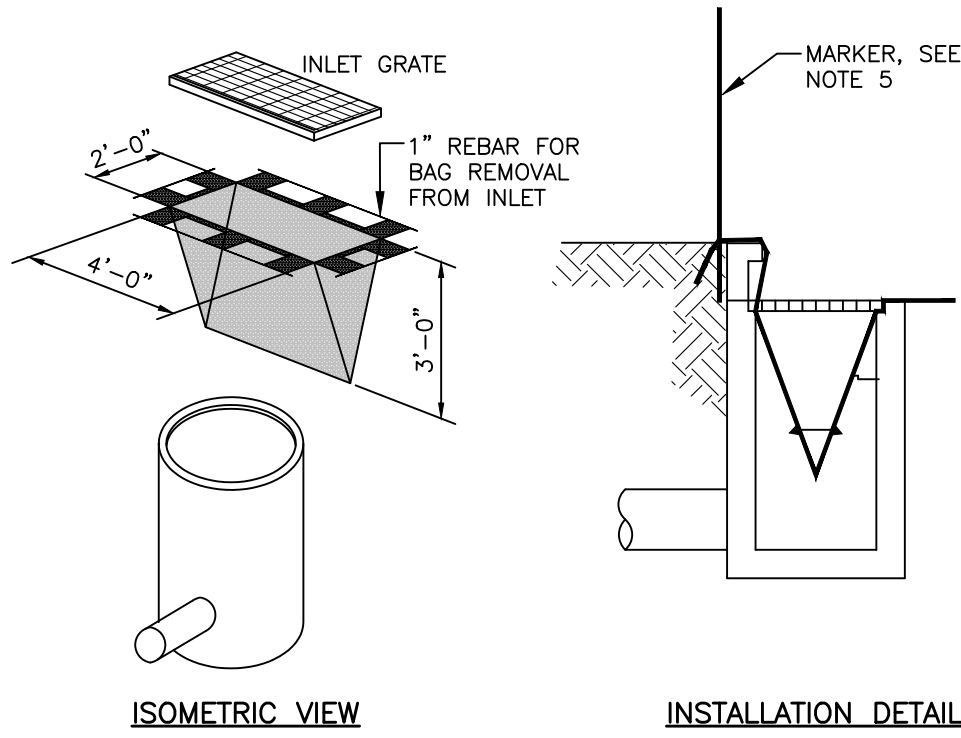
PLT: INFO: Z:\2023\21581\CADD\CD\21581\_DET.DWG LAYOUT: DET001 DATE: 2/15/2024 TIME: 9:48:45 AM USER: AOF/ANZON



**NOTES:**

1. ESTABLISH STABILIZED CONSTRUCTION ENTRANCE PRIOR TO THE INITIATION OF SITE CONSTRUCTION ACTIVITIES IN LOCATION SHOWN ON THE PLANS OR AS DIRECTED BY THE ENGINEER.
2. REMOVE ALL VEGETATION, TOPSOIL, AND OTHER OBJECTIONABLE MATERIAL FROM THE FOUNDATION AREA.
3. GRADE FOUNDATION AND CROWN FOR POSITIVE DRAINAGE AWAY FROM PUBLIC ROAD IF POSSIBLE. IF THE SLOPE OF THE CONSTRUCTION ENTRANCE IS TOWARD A PUBLIC ROAD AND EXCEEDS TWO PERCENT, CONSTRUCT AN EIGHT INCH HIGH DIVERSION RIDGE WITH A RATIO OF 3-TO-1 SIDE SLOPES ACROSS THE FOUNDATION AREA ABOUT 15 FEET FROM THE ENTRANCE TO DIVERT RUNOFF AWAY FROM THE ROAD.
4. PLACE AGGREGATE TO THE DIMENSIONS AND GRADE SHOWN IN THE CONSTRUCTION PLANS, LEAVING THE SURFACE SMOOTH AND SLOPED FOR DRAINAGE.
5. DIVERT ALL STORM WATER RUNOFF AND DRAINAGE FROM THE INGRESS,/EGRESS PAD TO A SEDIMENT TRAP OR BASIN.
6. INSPECT DAILY.
7. RESHAPE PAD AS NEEDED FOR DRAINAGE AND RUNOFF CONTROL.
8. TOP DRESS WITH CLEAN AGGREGATE AS NEEDED.
9. IMMEDIATELY REMOVE MUD AND SEDIMENT TRACKED OR WASHED ONTO PUBLIC ROADS.
10. FLUSHING SHOULD ONLY BE USED IF THE WATER CAN BE CONVEYED INTO A SEDIMENT TRAP OR BASIN.

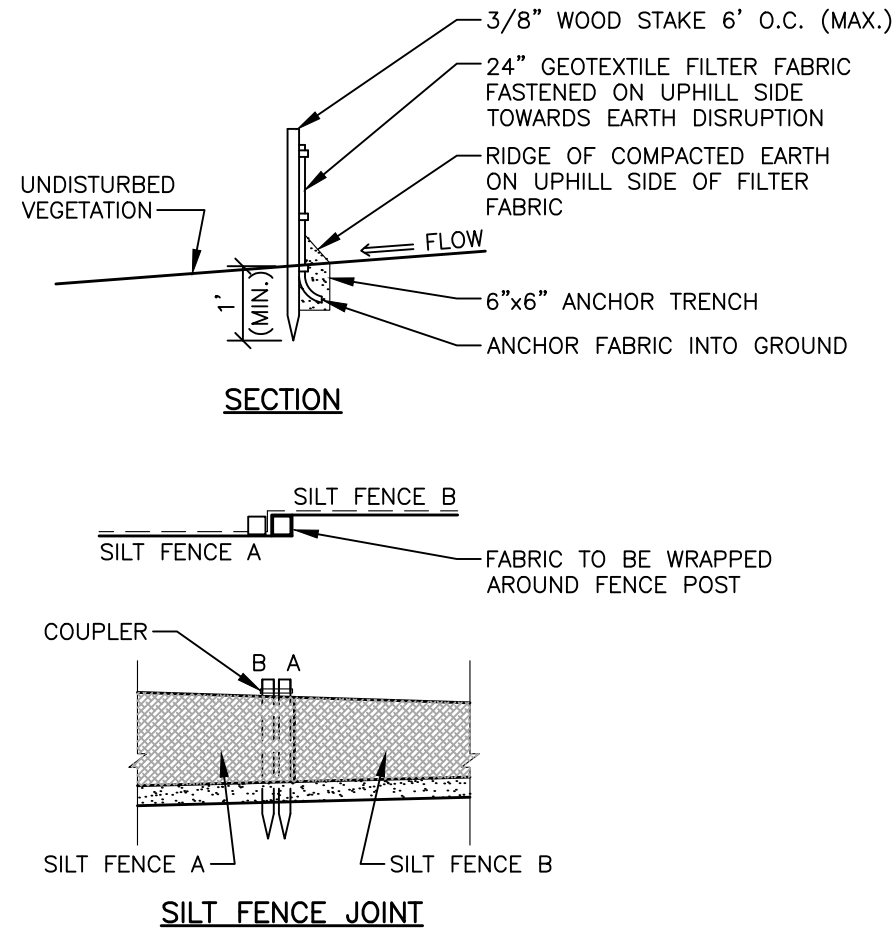
**57 STABILIZED CONSTRUCTION ACCESS**  
NO SCALE SE--057



**NOTES:**

1. PLACE FILTER FABRIC BAG INSIDE THE INLET BENEATH THE GRATE.
2. REPLACE GRATE, WHICH WILL HOLD BAG IN PLACE.
3. ANCHOR FILTER BAG SO IT WILL NOT DROP INTO CATCH BASIN.
4. EXTEND FLAPS OF BAG BEYOND THE BAG. BURY IN SOIL IN EARTH AREAS.
5. IF CATCH BASIN IS IN A LOW DEPRESSION — MARK CB LOCATION WITH A MARKER TO ASSIST LOCATING CATCH BASIN IF FLOODING OCCURS.
6. INSPECT DROP INLET FILTERS ROUTINELY AND AFTER EACH RAIN EVENT.
7. REPLACE DAMAGED FILTER BAGS IMMEDIATELY.
8. CLEAN AND/OR REPLACE FILTER BAG WHEN 1/2 FULL. REPLACE CLOGGED FABRIC IMMEDIATELY.
9. VACUUM OUT CATCH BASIN SUMP IF FILTER BAG TEARS.
10. REMOVE ENTIRE PROTECTIVE MECHANISM WHEN UP GRADIENT AREAS ARE STABILIZED AND STREETS HAVE BEEN SWEEPED AND/OR DIRECTLY DETECTED BY ENGINEER/OWNER.

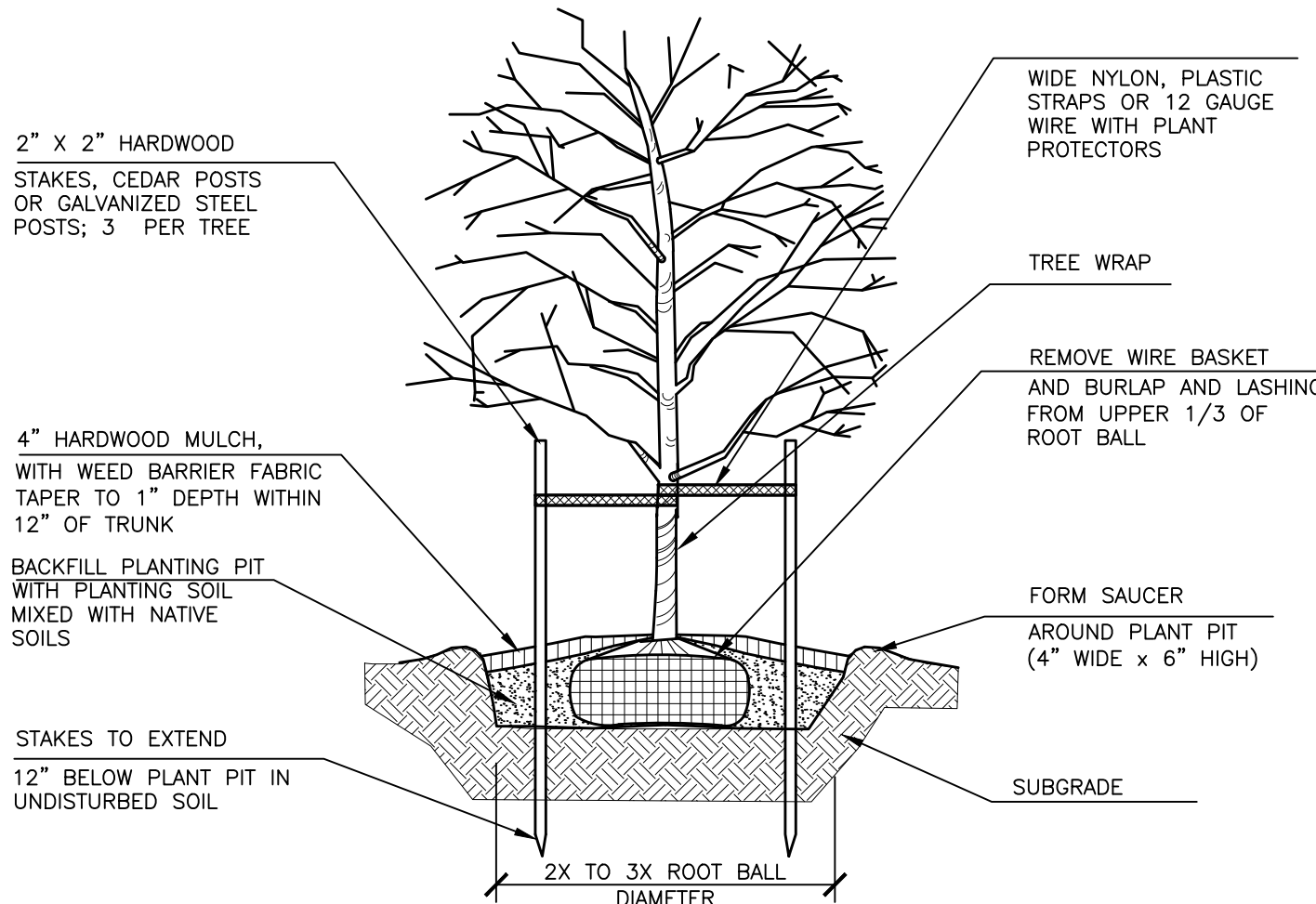
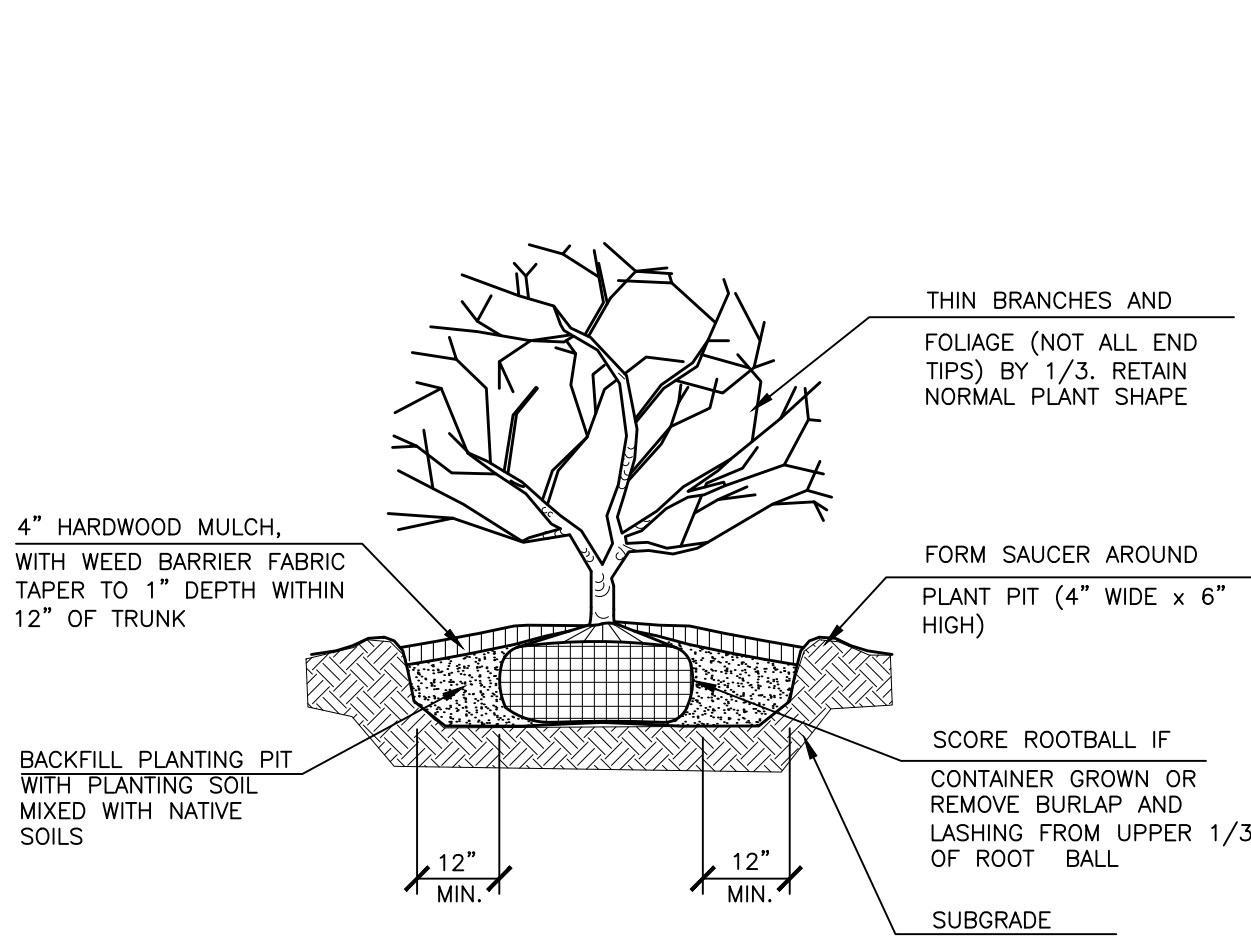
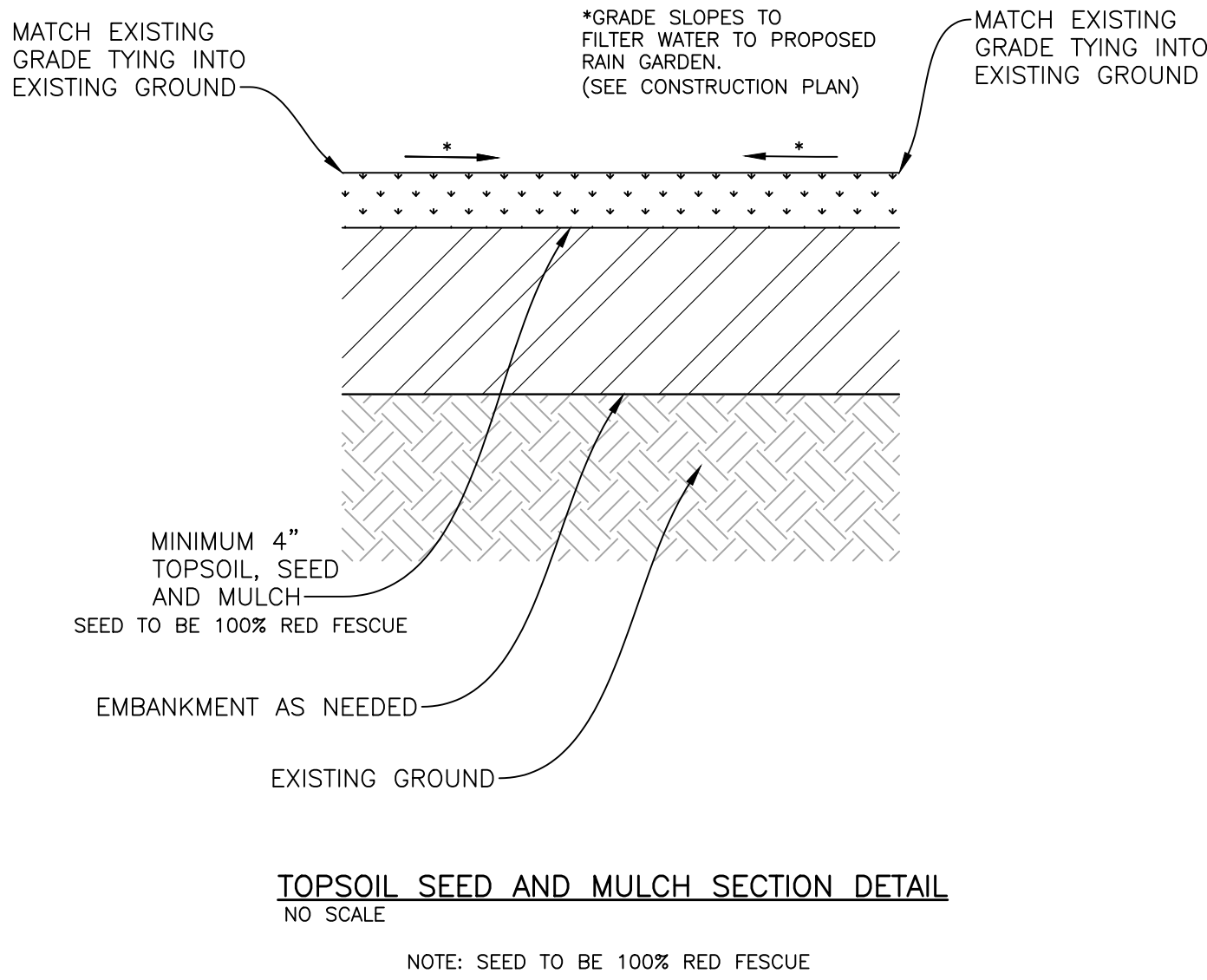
**56 INLET PROTECTION — FABRIC DROP**  
NO SCALE SE--056



**NOTES:**

1. CONSTRUCT SILT FENCE BEFORE UP SLOPE GROUND COVER IS REMOVED, CLEARING, GRUBBING, AND STUMPING CAN OCCUR BEFORE SILT FENCE INSTALLATION IF GROUND COVER IS NOT REMOVED.
2. PLACE ALL SILT FENCE PARALLEL TO THE SLOPE AS POSSIBLE SO THAT WATER WILL NOT CONCENTRATE AT LOW POINTS IN THE FENCE AND SO THAT SMALL SWALES OR DEPRESSIONS THAT MAY CARRY SMALL CONCENTRATED FLOWS TO THE SILT FENCE ARE DISSIPATED ALONG ITS LENGTH.
3. INSTALL ENDS OF THE SILT FENCES UP SLOPE 12" IN ELEVATION SO THAT WATER PONDED BY THE SILT FENCE WILL BE PREVENTED FROM FLOWING AROUND THE ENDS.
4. INSTALL THE TRENCH WITH A TRENCHER, CABLE LAYING MACHINE, SLICING MACHINE, OR OTHER SUITABLE DEVICE THAT WILL ENSURE AN ADEQUATELY UNIFORM TRENCH DEPTH.
5. WHERE TWO SECTIONS OF PREFABRICATED SILT FENCE ARE COMBINED INTO ONE RUN, THE END POSTS SHALL BE CONNECTED TOGETHER, NOT SIMPLY OVERLAPPED.
6. SILT FENCE SHALL ALLOW RUNOFF TO PASS ONLY AS DIFFUSE FLOW THROUGH THE GEOTEXTILE. IF RUNOFF OVERTOPS THE SILT FENCE, FLOWS AROUND THE ENDS, OR IN ANY OTHER WAY BECOMES A CONCENTRATED FLOW, ONE OF THE FOLLOWING SHALL BE PERFORMED, AS APPROPRIATE: A) AN ADDITIONAL RUN OF SILT FENCE SHALL BE PLACED UPSTREAM, B) THE LAYOUT OF THE SILT FENCE SHALL BE CHANGED, C) ACCUMULATED SEDIMENT SHALL BE REMOVED, OR D) OTHER BEST MANAGEMENT PRACTICES SHALL BE IMPLEMENTED.
7. INSPECT FREQUENTLY AND IMMEDIATELY AFTER EACH STORM EVENT, CHECK SEVERAL TIMES DURING PROLONGED STORM EVENTS. IF NECESSARY, REPAIR IMMEDIATELY.
8. REMOVE SEDIMENT DEPOSITS WHEN THE DEPOSIT REACHES APPROXIMATELY ONE-HALF OF THE HEIGHT OF THE SILT FENCE.
9. REMOVE SILT FENCE ONLY WHEN ALL UPSTREAM VEGETATION IS FULLY ESTABLISHED AND DIRECTED BY ENGINEER/OWNER.

**54 SILT FENCE DETAIL**  
NO SCALE SE--054



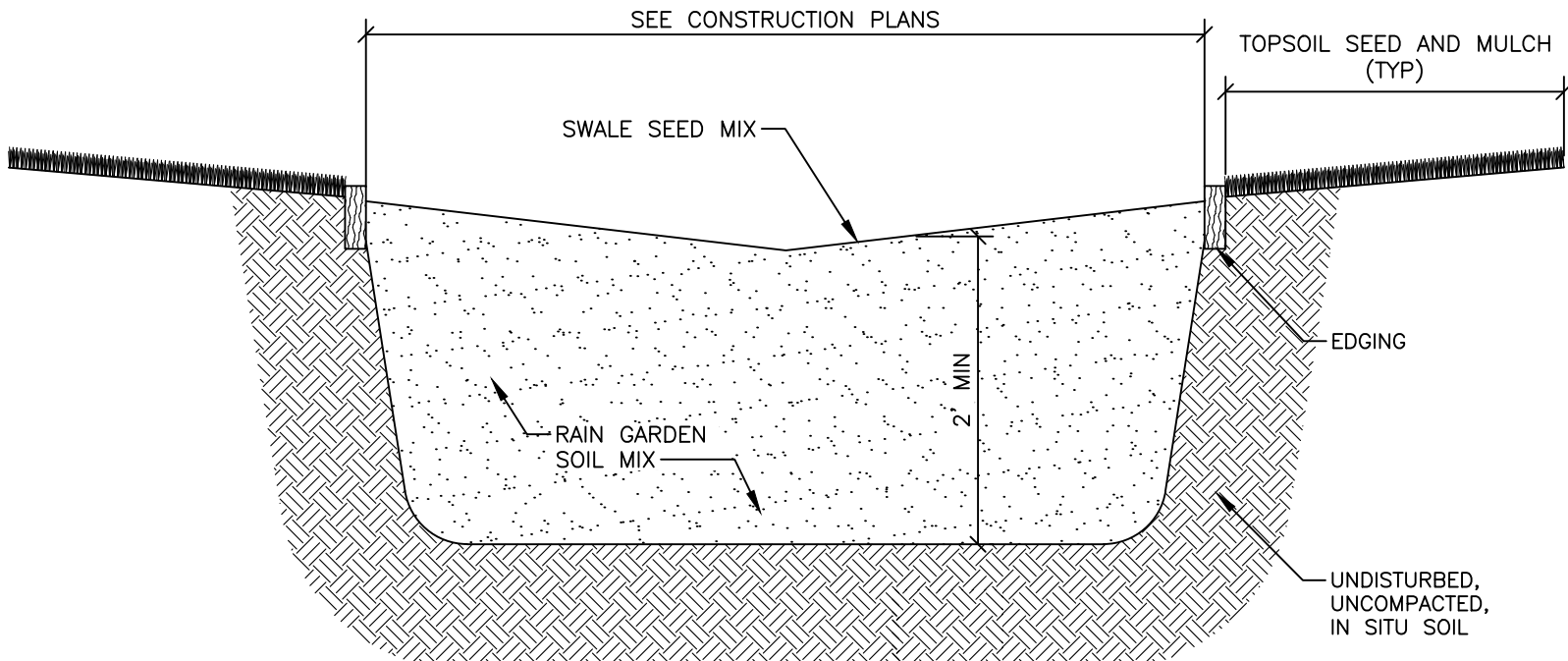
**PLANTING SOIL MIX**

**ALL PLANTING BEDS TO RECEIVE:**

- 1 6 CU FT. BALE CANADIAN PEAT
- 1 40LB BAG DRIMANURE
- 1 10LB BAG SHEMINS 13-13-13 MULTI PURPOSE FERTILIZER

**PER 100 SQ FT BED AREA.**

**HAND TILL INTO SOIL TO A MINIMUM DEPTH OF 12"**



NOTE: THOROUGHLY AND DEEPLY SCARIFY SUBSOIL IN THE EXCAVATED RAIN GARDEN BEFORE PLACING SOIL MIX OR TOPSOIL. SCARIFICATION MAY BE COMPLETED WITH A TOOTHED BACKHOE OR OTHER APPROPRIATE EQUIPMENT.

**RAIN GARDEN DETAIL**  
NO SCALE



WAYNE STATE UNIVERSITY

**fishbeck**  
Engineers | Architects | Scientists | Constructors

**Wayne State University**  
DEMOLITION AT 5959 WOODWARD AVE

**REVISIONS**

02/15/2024 CD/S  
12/20/2023 WSU REVIEW

Drawn By AOF  
Designer AOF  
Reviewer KK3  
Manager KK3

Hard copy is intended to be 24"x36" when plotted. Scale(s) indicated and graphic quality may not be accurate for any other size.

PROJECT NO.

231581

SHEET NO.

6

DET001

©Copyright 2023  
All Rights Reserved