

# CHEMISTRY ROOF SCREEN WALL REPLACEMENT



Wayne State University

Construction

08/31/2017

HED

HED PROJECT # 2016-01845-000  
WSU # 007-287391



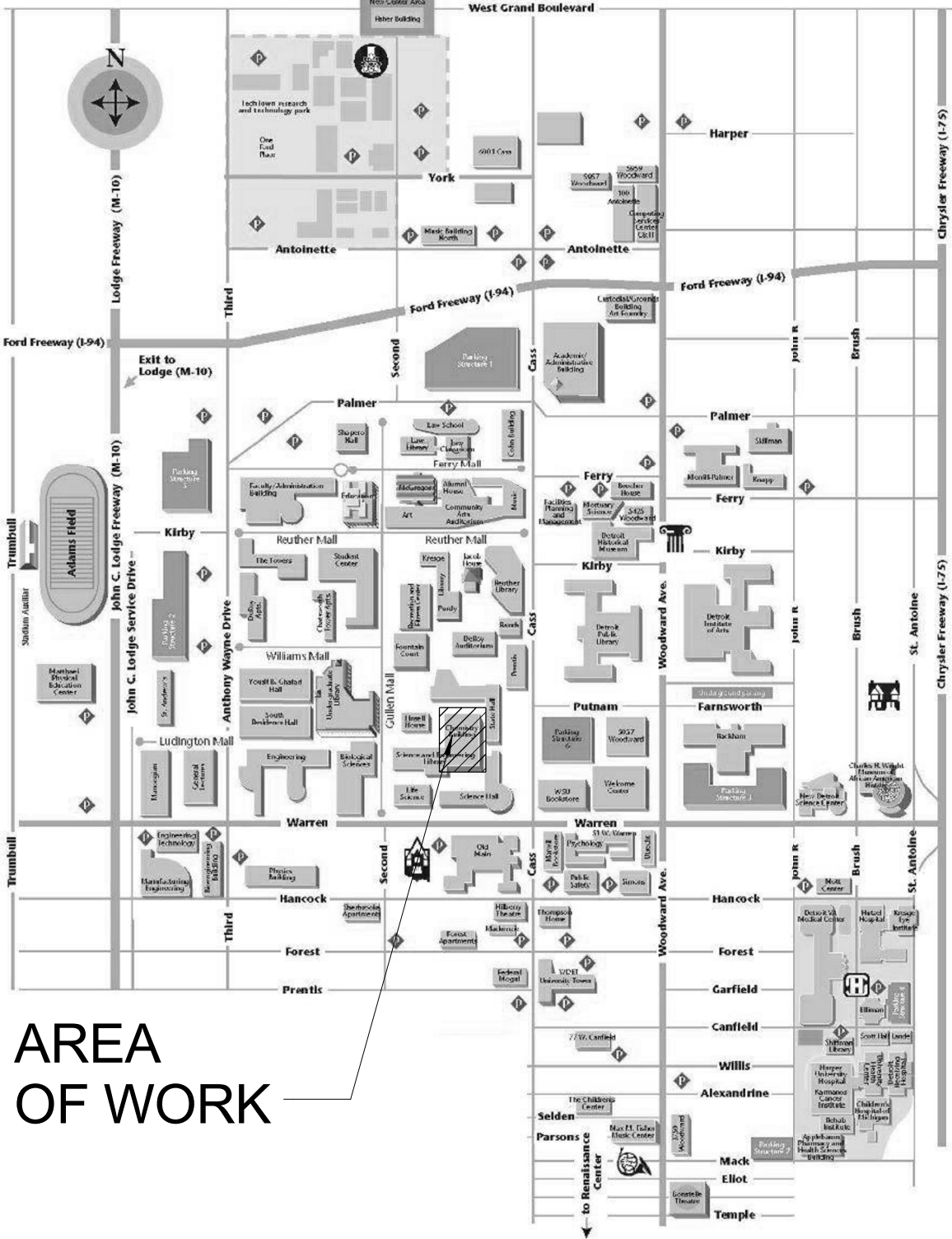


G

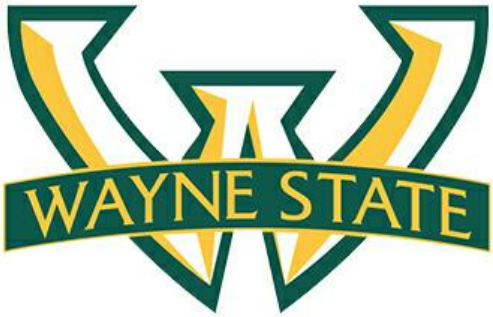


C

DRAWING LIST		
Sheet Number	Sheet Name	Sheet Issued For
G-000	Title Sheet	
A-101	Location Map & Existing Location Photos	
A-102	Screen Wall Plan, Elevations & Details	
EL-OP	Penthouse Lighting Plan	



CAMPUS MAP / PROJECT LOCATION



CHEMISTRY  
ROOF SCREEN  
WALL  
REPLACEMENT

Wayne State  
University

Date 08/31/2017 Issued For Construction

REMOVE ANGLE BRACES  
@ EXISTING SILL PLATES.

REMOVE / REPLACE BAD  
PLATE AREAS AS REQUIRED  
AFTER PREPPING.



H



E



B

CMU INFILL  
REQUIRED - PAINT  
TO MATCH EXISITNG  
ADJACENT FINISH.

NOTE:  
REMOVE BENT BAR STRAPS  
FROM PREVIOUS CMU WALL  
CONSTRUCTION AT  
EXISTING TOP CHANNEL  
COLUMN TIES. - TYP.

- STEEL FRAMING REFINISHING:
- STEEL CLEANING AND PREPERATON:  
CLEAN STEEL IN FULL ACCORDANCE WITH PAINT  
MANUFACTURER'S WRITTEN RECOMMENDATIONS  
INCLUDING SSPC-SP3 POWER TOOL CLEANING AS  
MINIMUM.
  - FINISHES: ONE OF THE FOLLOWING:  
A. SHERWIN WILLIAMS (SW): 1 COAT OF MACROPOXY 646  
FC PRIMER AND 2 FINISH COATS OF HI-SOLIDS  
POLYURETHANE.  
B. PPG PAINTS (PPG): 1 COAT PITT-GUARD DTR EPOXY  
MASTIC 95-245 SERIES PRIMER AND 2 FINISH COATS  
PITTHANE ULTRA GLOSS URENTANE 95- 812 SERIES.
  - ALL WORK TO BE PERFORMED IN FULL ACCORDANCE  
WITH PAINT MANUFACTURERS WRITTEN  
RECOMMENDATIONS BY A PAINTING COMPANY  
QUALIFIED AND EXPERIENCED IN PERFORMING WORK  
OF THIS TYPE AND CONDITIONS.

CMU INFILL REQUIRED -  
PAINT TO MATCH EXISITNG  
ADJACENT FINISH.



F AT PENTHOUSE INTERIOR



D



A

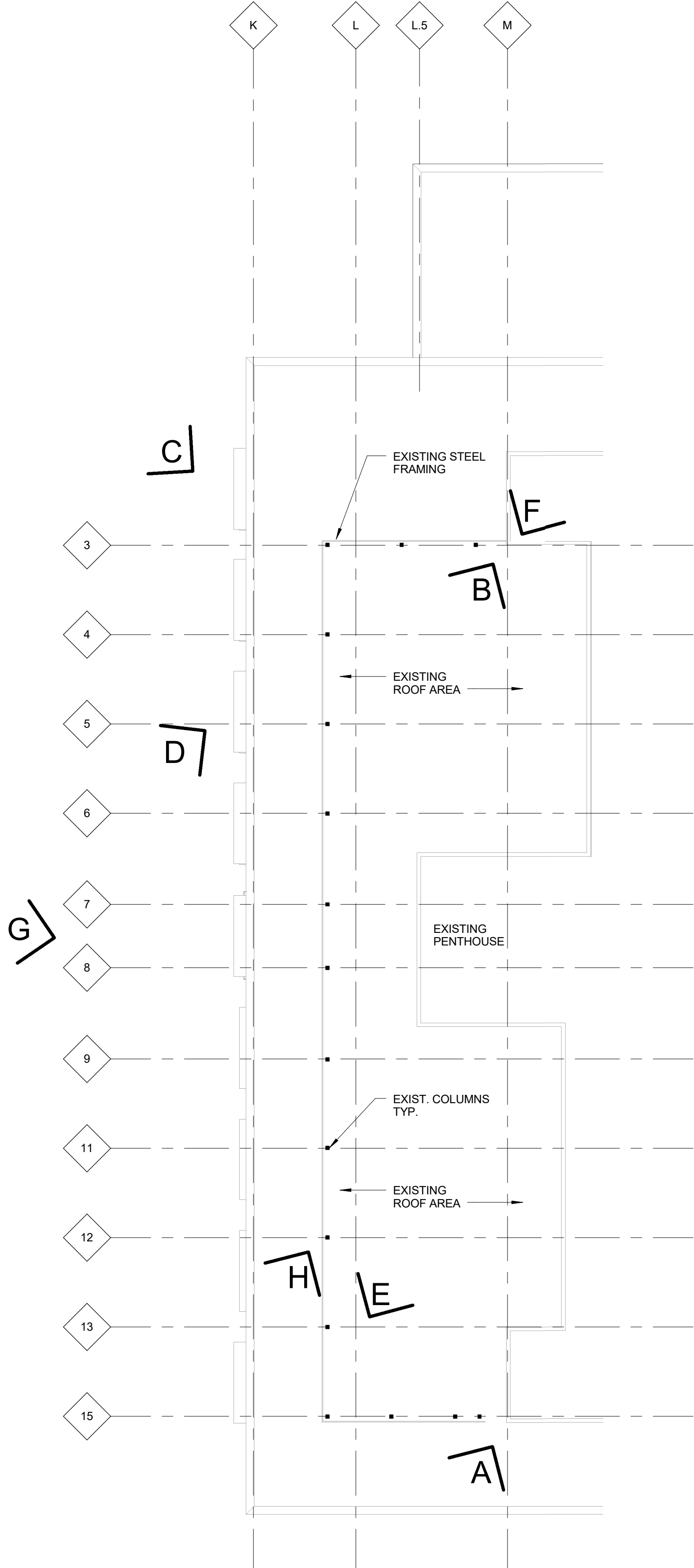
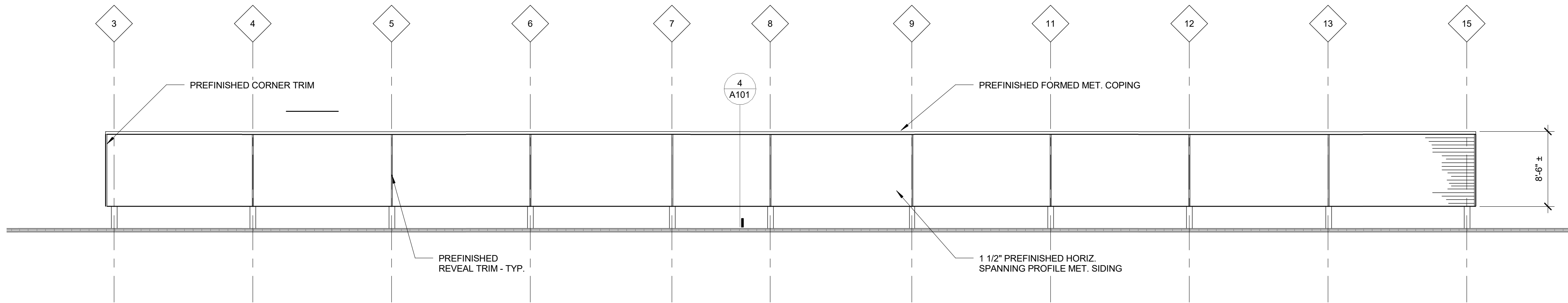


PHOTO KEY PLAN

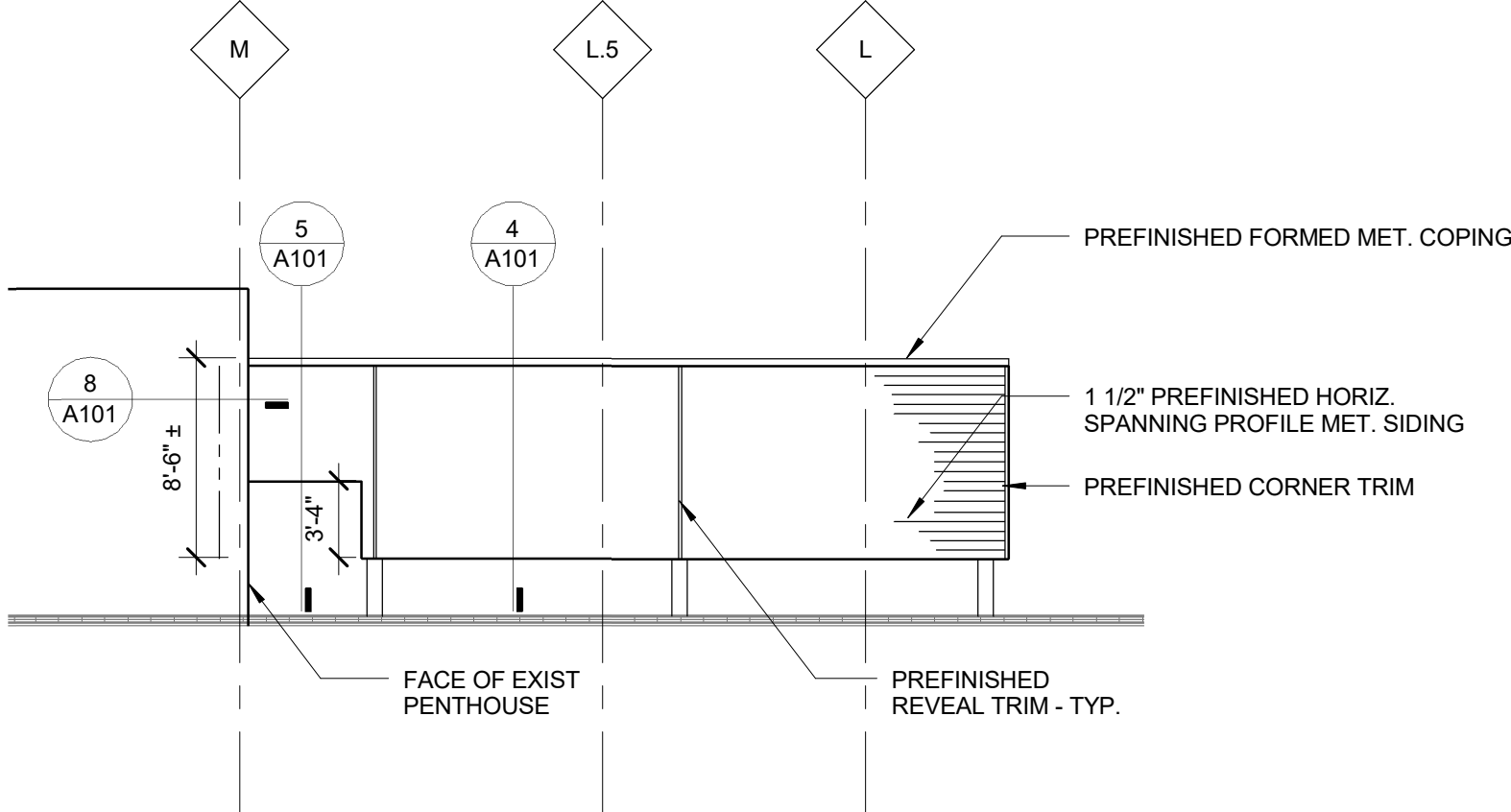
HED  
26913 Northwestern Hwy  
Suite 200  
Southfield, Michigan  
48033 USA  
(248) 262-1500  
WWW.HED.DESIGN

HED PROJECT # 2016-01845-000  
WSU # 007-287391  
Location Map & Existing  
Location Photos

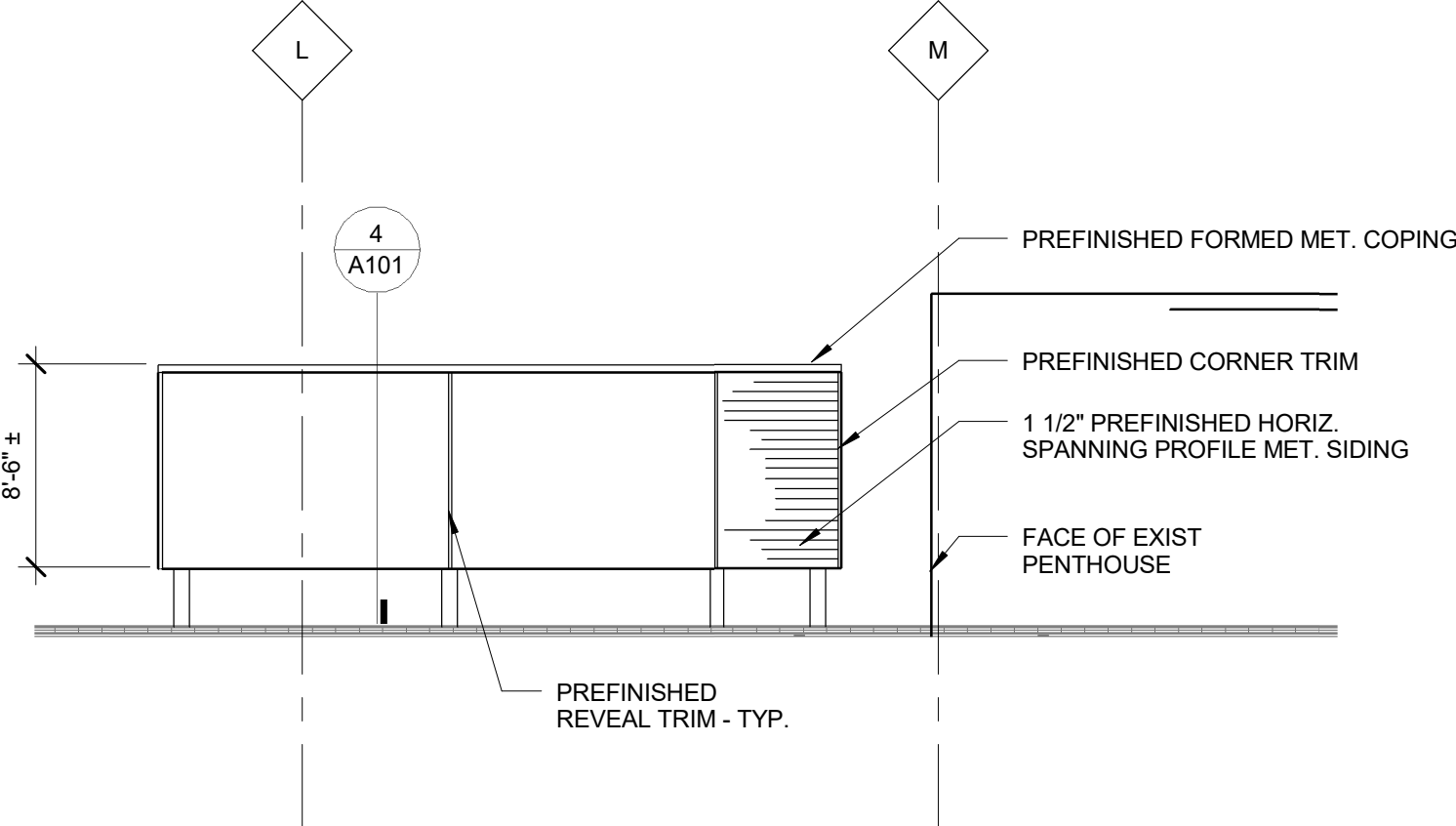




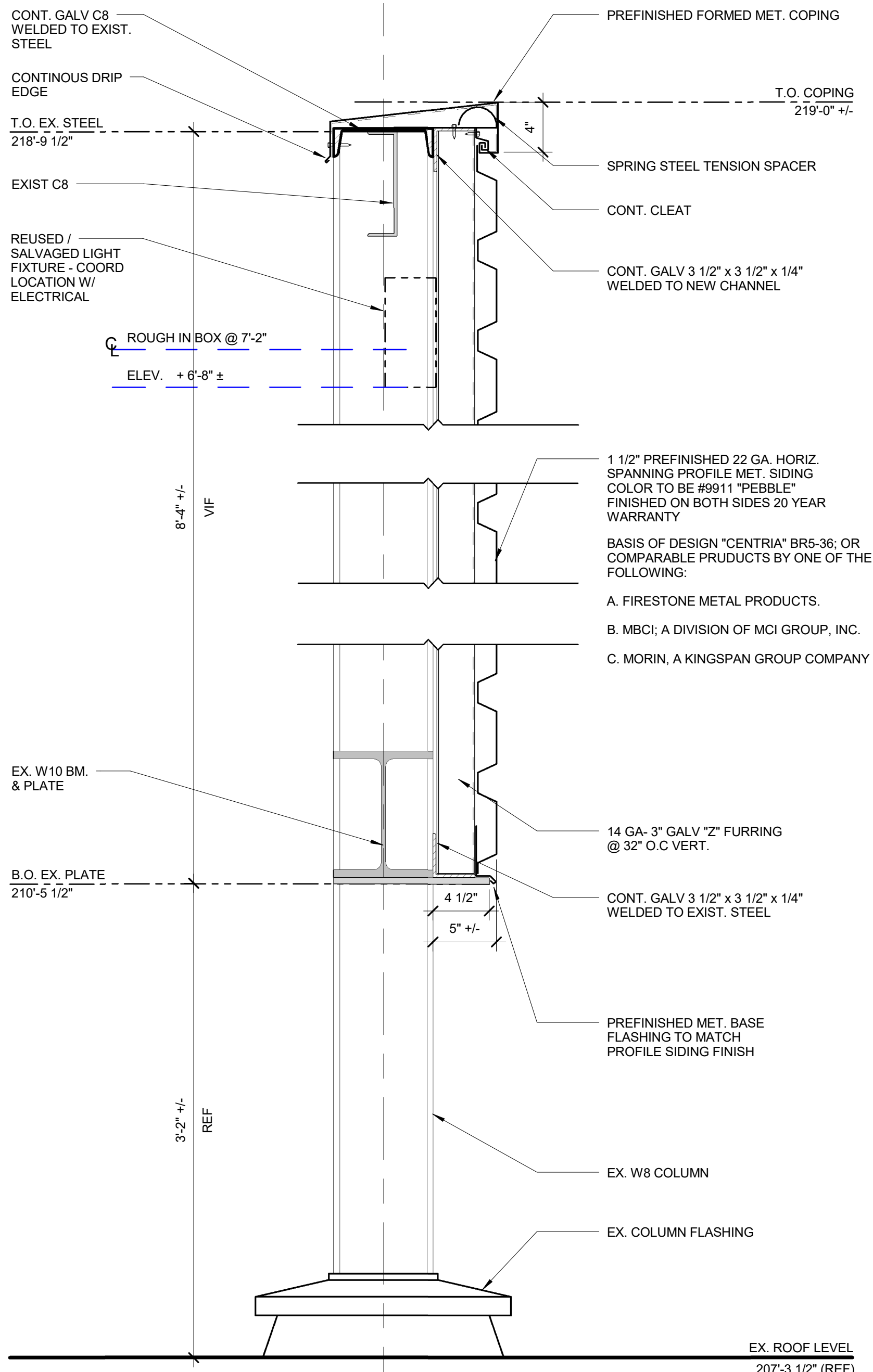
1  
A-102  
SCREEN WALL WEST ELEVATION  
SCALE: 1/8" = 1'-0"



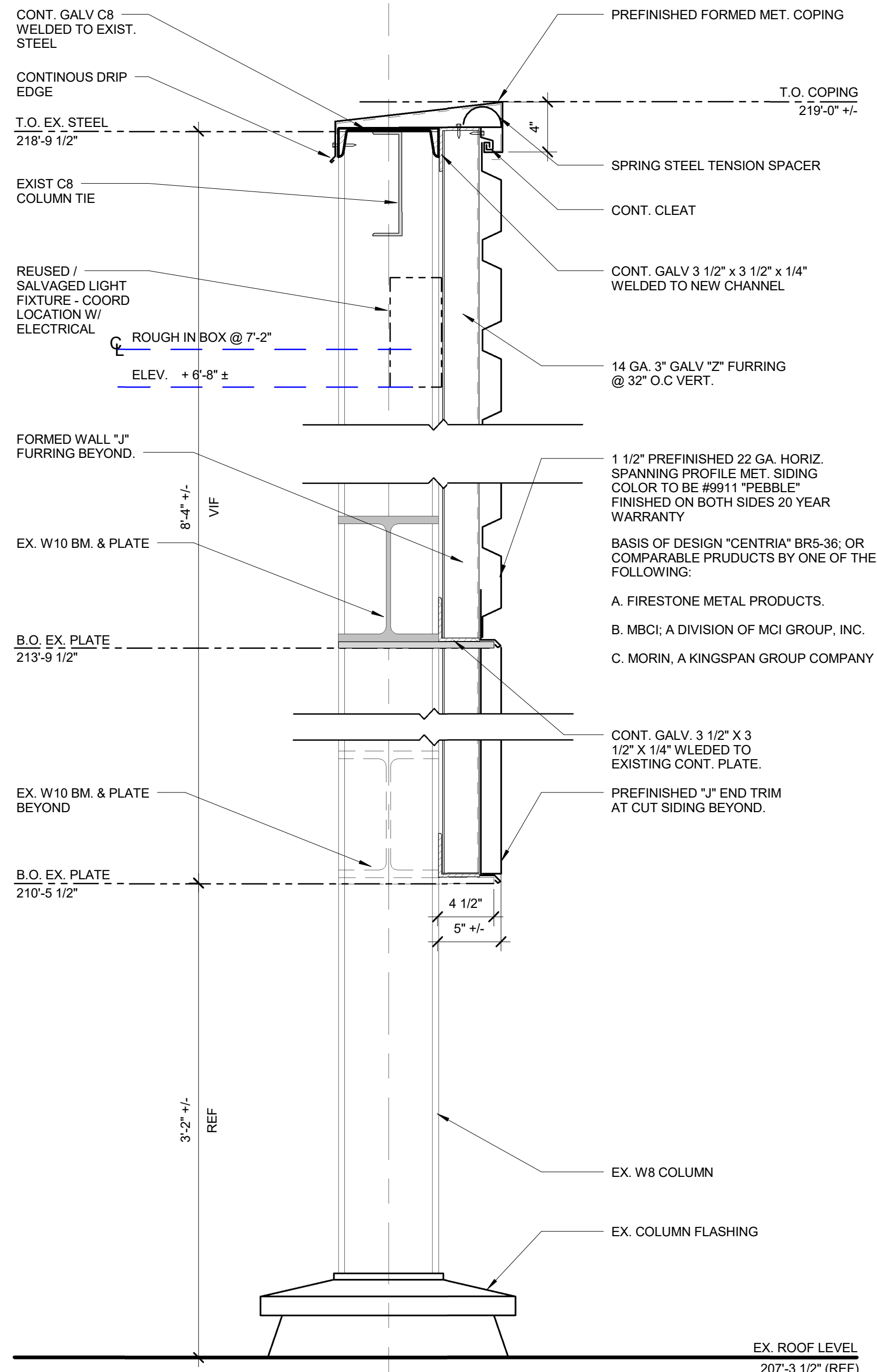
2  
A-102  
SCREEN WALL NORTH ELEVATION  
SCALE: 1/8" = 1'-0"



3  
A-102  
SCREEN WALL SOUTH ELEVATION  
SCALE: 1/8" = 1'-0"



4  
A101  
SECTION @ SCREEN WALL  
SCALE: 1 1/2" = 1'-0"



5  
A101  
SECTION @ SCREEN WALL  
SCALE: 1 1/2" = 1'-0"

NOTE:  
EXISTING STEEL COLUMNS, BEAMS &  
PLATE SCREENWALL STRUCTURE TO  
BE PREPARED AND PROVIDED WITH  
EPOXY COATING PRIOR TO  
INSTALLATION OR NEW  
SCREENWALL COMPONENTS.  
AS NOTED ON SHEET A-101

NOTE:  
CONNECT EXTERIOR SCREEN WALL LUMINAIRES THAT HAD BEEN REMOVED TO ENABLE SCREEN WALL  
RECONSTRUCTION TO THE SAME NORMAL POWER LIGHTING CIRCUIT AS ORIGINALLY SUPPLIED THE  
EXTERIOR SCREEN WALL LUMINAIRES.

THE INTENT IS FOR THE EXTERIOR SCREEN WALL LUMINAIRES TO BE INSTALLED IN THE SAME RELATIVE  
LOCATION AND TO THE SAME BRANCH CIRCUITING AS ORIGINAL. A 2010 RENOVATION OF THE CHEMISTRY  
BUILDING INCLUDED PENTHOUSE AND EXTERIOR SCREEN WALL AREA LIGHTING, AS INDICATED AMONG  
REFERENCE DRAWING EL-OP DATED 16 AUGUST, 2010. THIS REFERENCE DRAWING CAN BE USED AS A GUIDE  
FOR RECONSTRUCTING THE PLANNED CIRCUITING AND SWITCHING ARRANGEMENT OF EXTERIOR SCREEN WALL  
LUMINAIRES IN PARTICULAR, THE SCREEN WALL LUMINAIRES WERE IDENTIFIED THEN AS NEW, TYPE "FAX".  
(DISREGARD OTHER LUMINAIRES SHOWN WITHIN THE PENTHOUSE AMONG DRAWING EL-OP).

FOR RE-INSTALLATION OF REMOVED EXTERIOR SCREEN WALL LUMINAIRES, SURFACE MOUNT ASSOCIATED  
OUTLET BOXES 7'-2" AFF, WHERE INDICATED ON PLAN.

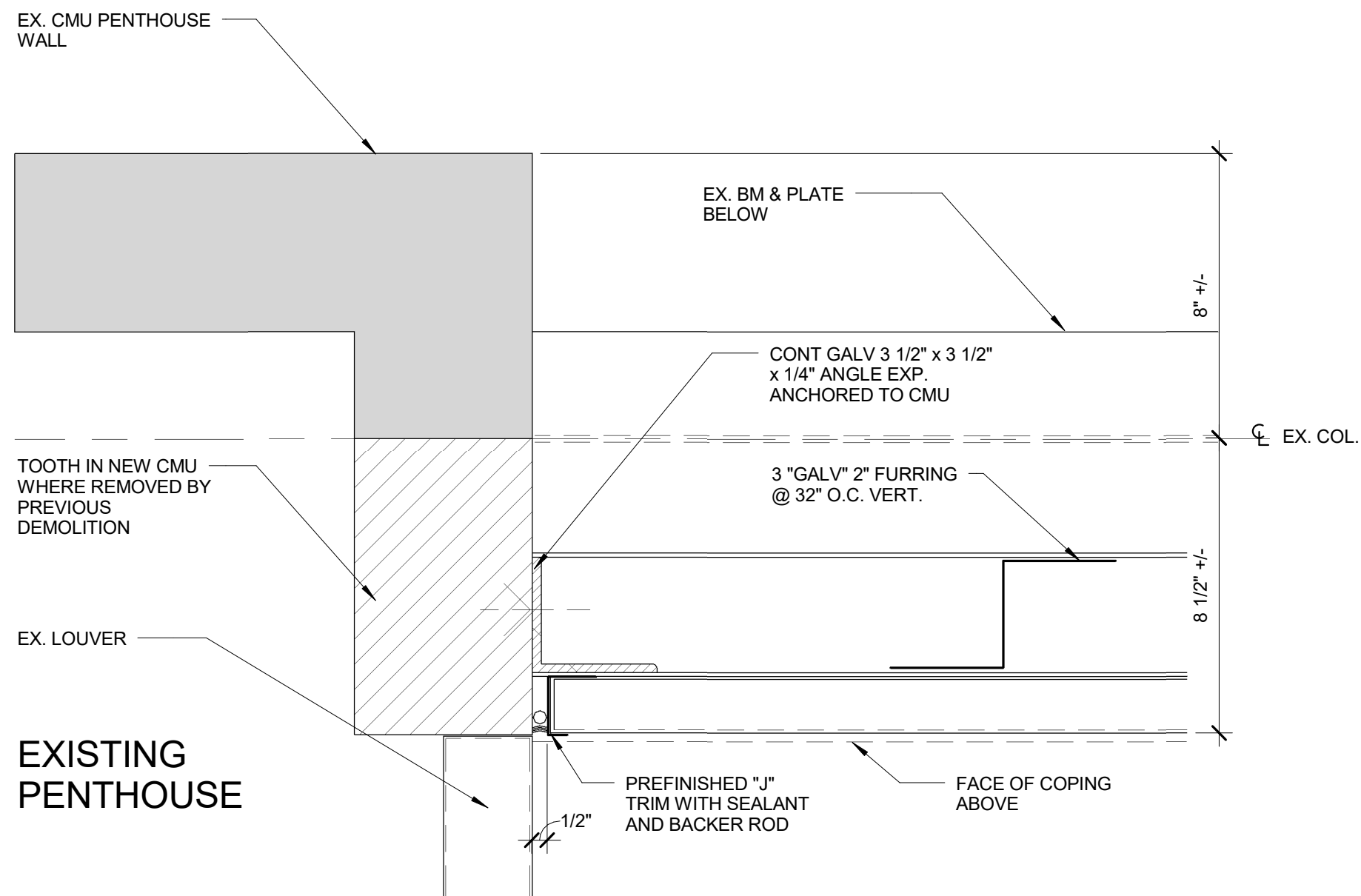
NEW WIRING SHALL BE STRANDED, SINGLE CONDUCTOR OR COPPER, RATED 600 VOLT AC, 12 AWG  
MINIMUM, TYPE THRW OR TYPE XHHW OR TYPE XHHW-2, RATED MINIMUM 75 DEGREE C WET  
LOCATION; INSTALLED IN NEW METAL RACEWAY. PROVIDE AN INSULATED GREEN EQUIPMENT  
GROUND CONDUCTOR IN NEW RACEWAY SYSTEMS CONTAINING BRANCH CIRCUIT WIRING.  
MATCH EXISTING WIRING COLORS.

NEW RACEWAYS SHALL BE NON-FLEXIBLE METAL (MATCH EXISTING CONSTRUCTION); SUPPORT NEW  
RACEWAYS AT INTERVALS NOT TO EXCEED 8 FEET AND WITHIN 12" OF EACH TERMINATION POINT.

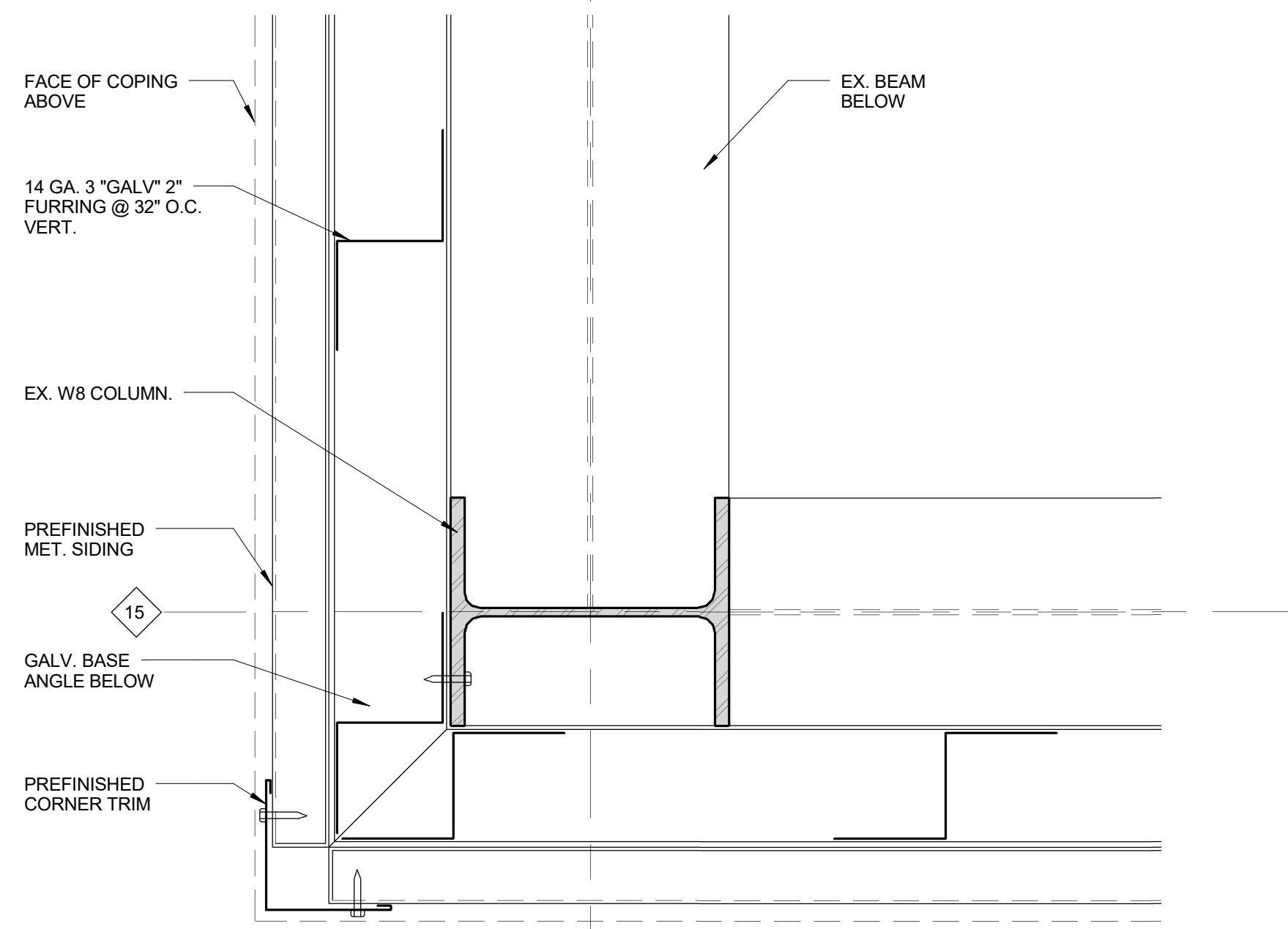
FOR EXTERIOR SCREEN WALL LUMINAIRES WHICH ARE DAMAGED, INOPERABLE OR OTHERWISE REQUIRE  
REPLACING, MATCH EXISTING.

EXTERIOR SURFACE MOUNT, TRAPEZOIDAL FULL CUTOFF WALL LUMINAIRE FOR OPERATION OF ONE  
HORIZONTAL 42 WATT TRIPLE TUBE COMPACT FLUORESCENT LAMP; DIE CAST ALUMINUM HOUSING,  
CLEAR TEMPERED GLASS LENS, DARK BRONZE (STANDARD) FINISH, ONE <10% THD FUSED ELECTRONIC  
BALLAST WITH END-OF-LIFE CIRCUITRY AND DESIGNED FOR RELIABLE STARTING AT 0 DEGREE F,  
277 VOLT OPERATION WITH INCORPORATED PHOTOELECTRIC CONTROL, UL LISTED FOR WET  
LOCATIONS.

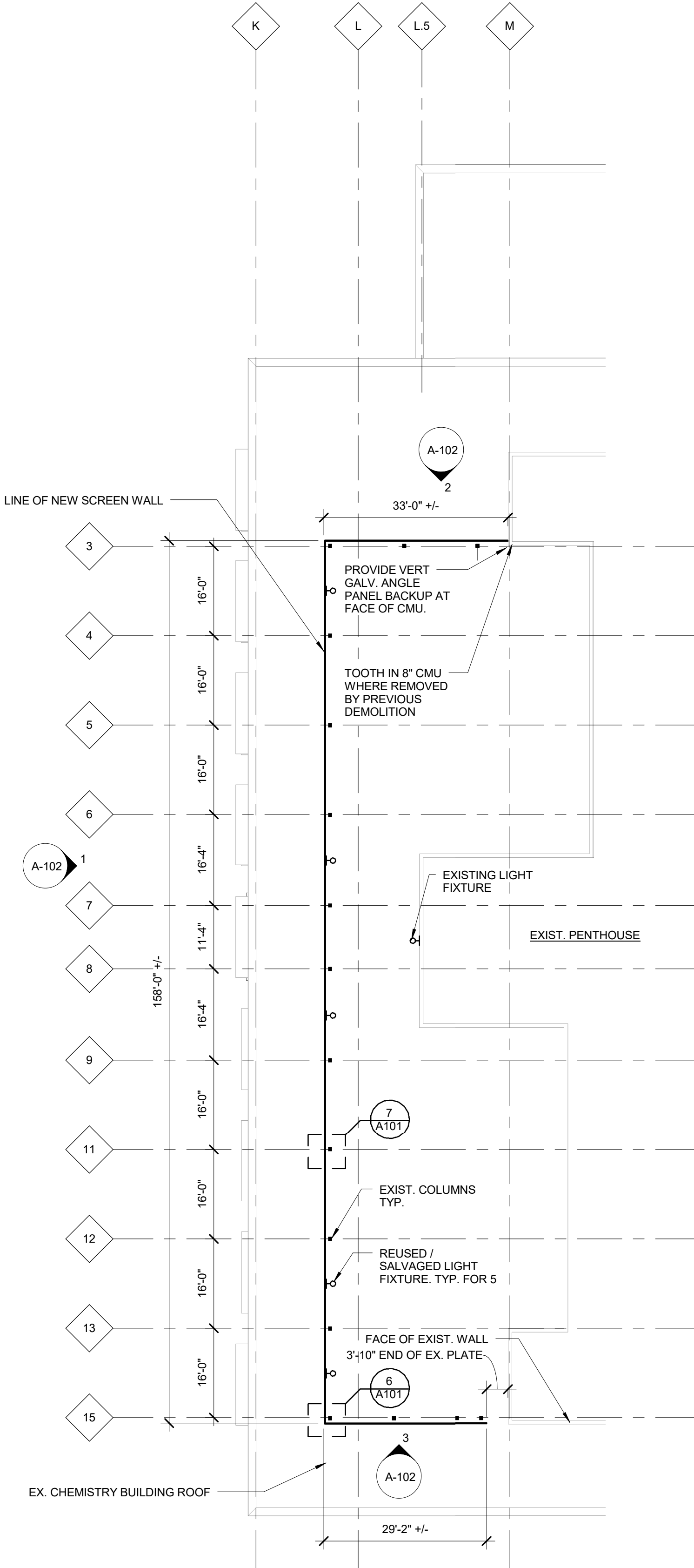
LITHONIA WST-42TRT-WT-277-GMF-PE-DOB WITH PHILIPS LAMP PL-T 42W/835/4P/ALTO



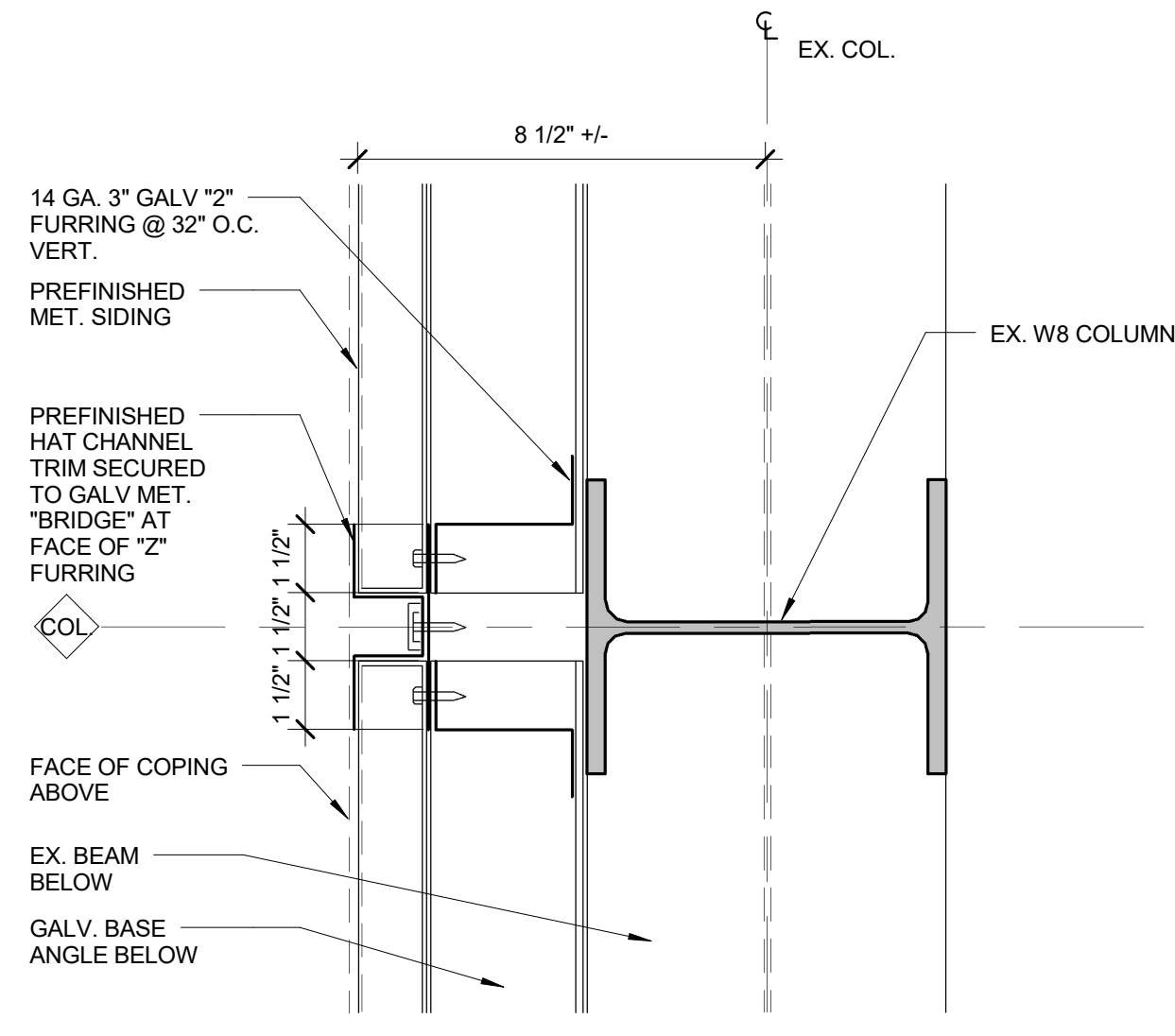
8  
A101  
DETAIL  
SCALE: 3" = 1'-0"



6  
A101  
DETAIL  
SCALE: 3" = 1'-0"



SCREEN WALL PLAN @ EXIST. ROOF  
SCALE: 1/16" = 1'-0"



7  
A101  
DETAIL  
A101: 3" = 1'-0"



CHEMISTRY  
ROOF SCREEN  
WALL  
REPLACEMENT

Wayne State  
University

Date Issued For  
08/31/2017 Construction



26913 Northwestern Hwy  
Suite 200  
Southfield, Michigan  
48033 USA  
(248) 262-1500  
WWW.HED.DESIGN

© 2016  
HED PROJECT # 2016-01845-000  
WSU # 007-287391  
Screen Wall Plan, Elevations &  
Details



