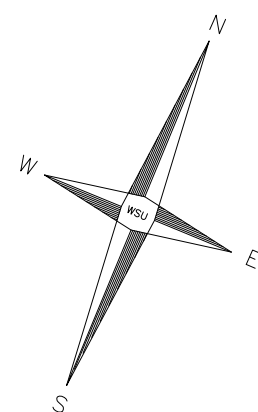
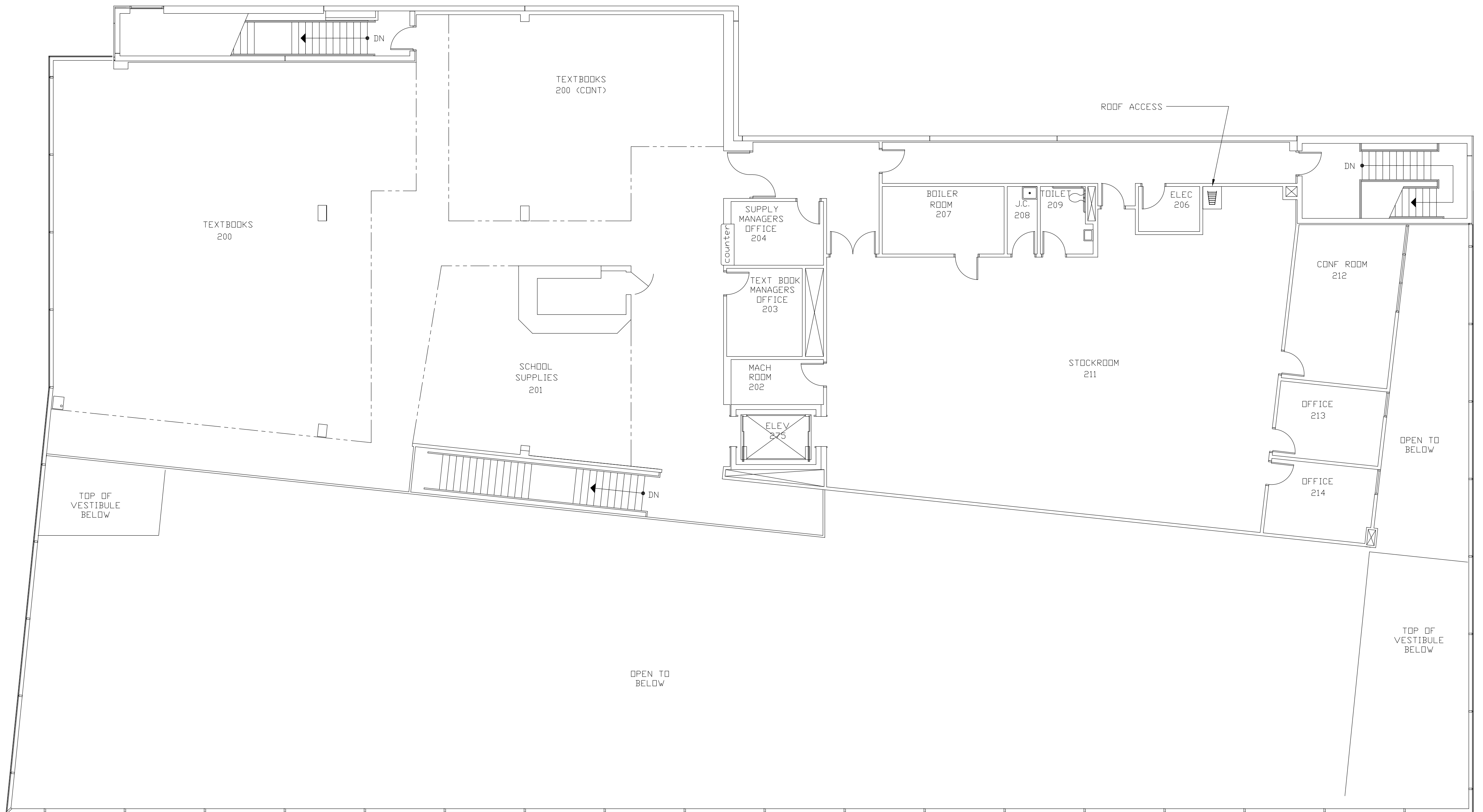


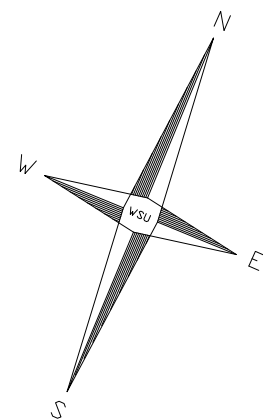
WSU BOOKSTORE
BUILDING #085
FIRST FLOOR



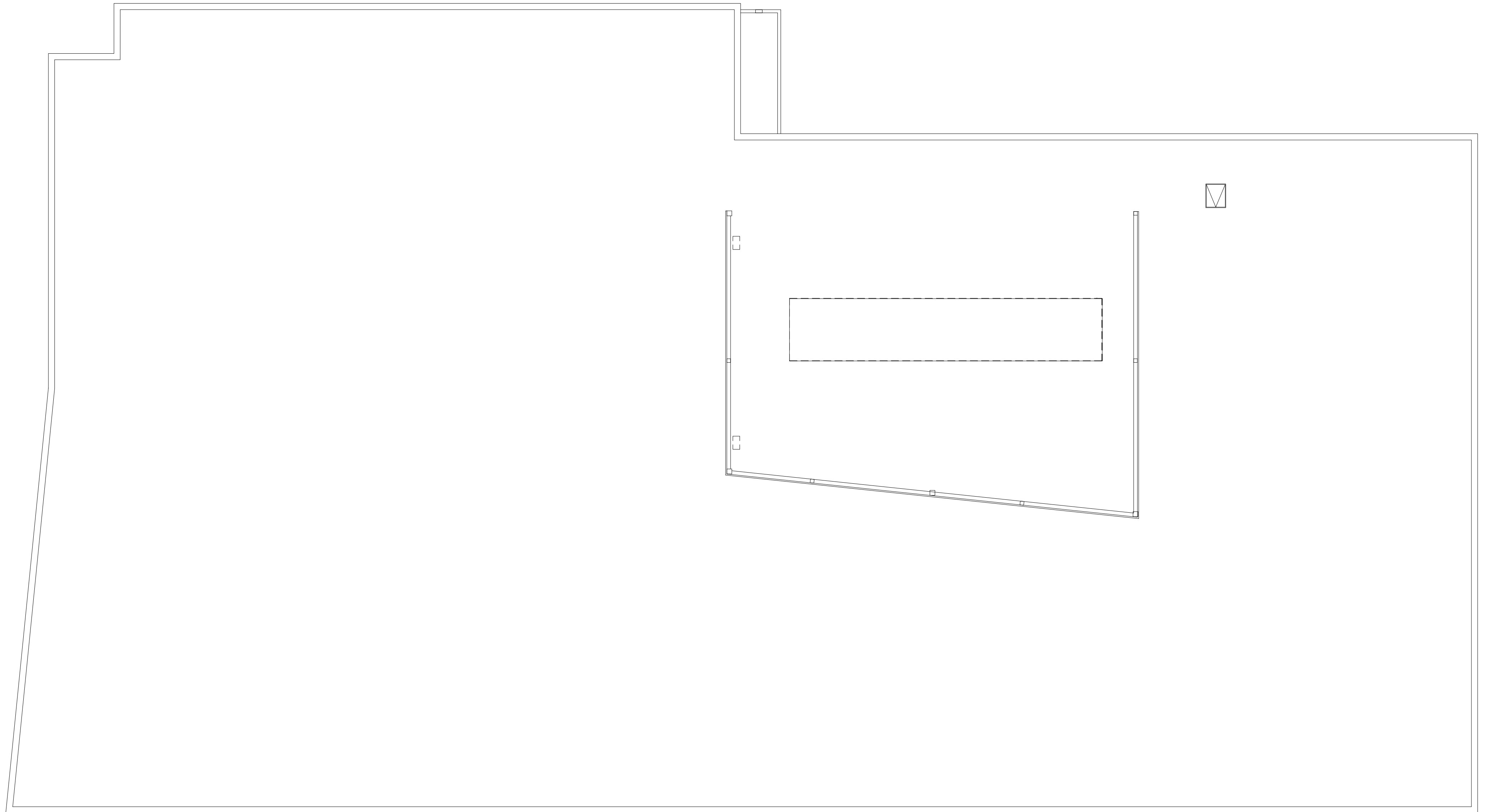
DISCLAIMER:
WAYNE STATE UNIVERSITY, FACILITIES PLANNING AND MANAGEMENT
MAKES THESE DOCUMENTS AVAILABLE ON AN "AS IS" BASIS.
THESE DRAWINGS WERE CREATED USING AUTOCAD FROM AUTODESK AND
ARE ACCURATE FOR SPACE MANAGEMENT, 'FLOOR PLAN' USE. THE
USERS WILL HOLD HARMLESS WSU, ITS OFFICERS, AGENTS, AND
EMPLOYEES FROM DAMAGES OR COST, INCLUDING REASONABLE
ATTORNEY'S FEES, ARISING FROM THE USE OF THESE DRAWINGS.



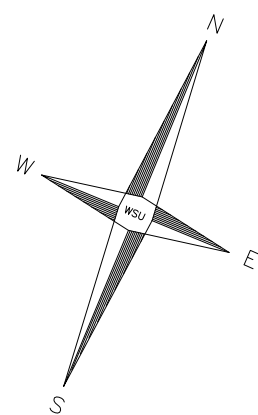
WSU BOOKSTORE
BUILDING #085
SECOND FLOOR



DISCLAIMER:
WAYNE STATE UNIVERSITY, FACILITIES PLANNING AND MANAGEMENT
MAKES THESE DOCUMENTS AVAILABLE ON AN "AS IS" BASIS.
THESE DRAWINGS WERE CREATED USING AUTOCAD FROM AUTODESK AND
ARE ACCURATE FOR SPACE MANAGEMENT, 'FLOOR PLAN' USE. THE
USERS WILL HOLD HARMLESS WSU, ITS OFFICERS, AGENTS, AND
EMPLOYEES FROM DAMAGES OR COST, INCLUDING REASONABLE
ATTORNEY'S FEES, ARISING FROM THE USE OF THESE DRAWINGS.



WSU BOOKSTORE
BUILDING #085
ROOF PLAN



DISCLAIMER:
WAYNE STATE UNIVERSITY, FACILITIES PLANNING AND MANAGEMENT
MAKES THESE DOCUMENTS AVAILABLE ON AN "AS IS" BASIS.
THESE DRAWINGS WERE CREATED USING AUTOCAD FROM AUTODESK AND
ARE ACCURATE FOR SPACE MANAGEMENT, 'FLOOR PLAN' USE. THE
USERS WILL HOLD HARMLESS WSU, ITS OFFICERS, AGENTS, AND
EMPLOYEES FROM DAMAGES OR COST, INCLUDING REASONABLE
ATTORNEY'S FEES, ARISING FROM THE USE OF THESE DRAWINGS.