



Computing & Network Services  
5925 Woodward – Detroit, MI 48202  
Tel. 313- 577-1955 Fax 313-577-5577

Request for Price Quote & Statement of Work

Date 05-21-2013  
SOW # 289  
TSR # T.B.D.  
Order # T.B.D.

Project name: Science Hall Rewire Project  
Building number/name 005 - Science Hall Building  
Building address: 5045 Cass  
Number of floors/involved : 3 MDF 1216.1 IDF 1015, 2015, & 3015. Prints Supplied yes  
Form submitted by: Pete Garabedian Work to be Completed By:  
Walk through date/time: Date Quote Response due back to WSU:  
Note: Please return all floor plans with your Bid Response/Proposal:

#### Bidder information

Company name:  
Address:  
City: State: MI Zip: Position:  
Person submitting Quote: e-mail  
Tel # Fax #  
Walk-thru Attendees:

#### Description of Work Requested by WSU

All work shall conform to Wayne State University Standards for Communications Infrastructure and Specifications dated October 31, 2012 which can be reviewed & downloaded at:  
<http://www.computing.wayne.edu/docs/wsu-communications-standards.pdf>

**Details & clarifications will be discussed at the mandatory prebid meeting**

#### Bid requirements:

- 1) Pricing detail must be filled out completely, or this price quote will not be accepted.
- 2) RCDD person on full time payroll to manage the on site installation of this project
- 3) All pre bid, bid & bid award processes will include at least 1 person from WSU's / C&IT's IT Customer Services Group, College of Liberal Arts & Sciences IT & WSU project manager.

#### Description

WSU needs to replace the old CAT 3 & CAT 5 voice/data cabling at Science Hall building # 005. This amounts to installing 58 dual voice/data jacks at locations shown on the spread sheet & prints circled in red. In addition to this, the installation contractor will move and cross connect the voice lines from the old jack to the new jack in the MDF and IDFs to the new horizontal cable. This will require a coordinated cutover with WSU project manager. This will include at a minimum of one IT person from College of Liberal Arts & Sciences, C&IT network engineering & telecommunications departments. WSU Electronic Technicians will connect the data patch panel ports to the network switches. All of the old voice and data cabling must be removed from the jack back to the communication room after the voice & data cutover is completed.

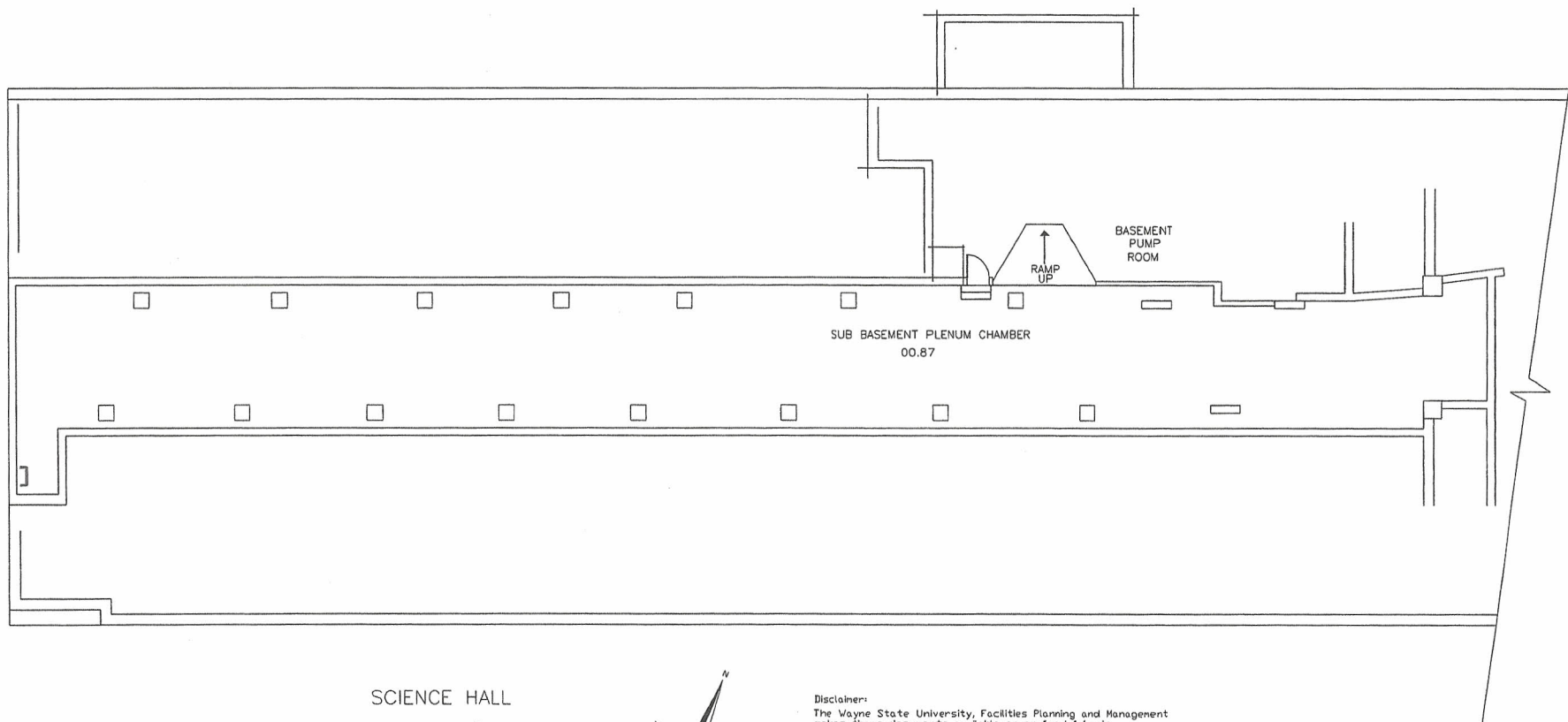
#### Horizontal Cabling

In the basement install 1 dual voice/data jacks per office or lab room at locations listed in the Science\_Hall\_Location\_Spreadsheet.xlsx provided. Jack locations shown on the print. This amounts to a total of 8 dual voice/data jacks. Voice & data terminates on separate patch panels in the communication rack. All basement connections terminate in the basement communication room 1216.1.

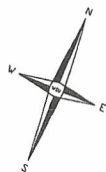
On the 1st Floor install 1 dual voice/data jacks per office or lab room at locations listed in the 1st\_Science\_Hall\_Location\_Spreadsheet.xlsx provided. Jack locations shown on the print. This amounts to a total of 4 dual voice/data jacks. Voice & data terminates on separate patch panels in the communication rack. All 1st floor connections terminate in the 1st floor communication room 1015.

On the 2nd Floor install 1 dual voice/data jacks per office or lab room at locations listed in the 2nd\_Science\_Hall\_Location\_Spreadsheet.xlsx provided. Jack locations shown on the print. This amounts to a total of 4 dual voice/data jacks. Voice & data terminates on separate patch panels in the communication rack. All 3rd floor connections terminate in the 2nd floor communication room 2015.

On the 3rd Floor install 1 dual voice/data jacks per office or lab room at locations listed in the 3rd\_Science\_Hall\_Location\_Spreadsheet.xlsx provided. Jack locations shown on the print. This amounts to a total of 40 dual voice/data jacks. Voice & data terminates on separate patch panels in the communication rack. All 3rd floor connections terminate in the 3rd floor communication room 3015.



SCIENCE HALL  
BUILDING #005  
SUB BASEMENT FLOOR



Disclaimer:  
The Wayne State University, Facilities Planning and Management  
makes these documents available on an 'as is' basis.  
These Drawings were created using AutoCAD from AutoDesk and  
are accurate for Space Management, 'Floor Plan' use. The users will  
hold harmless WSU, its officers, agents, and employees from damages or cost,  
including reasonable attorney's fees, arising from the use of these drawings.



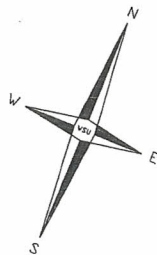
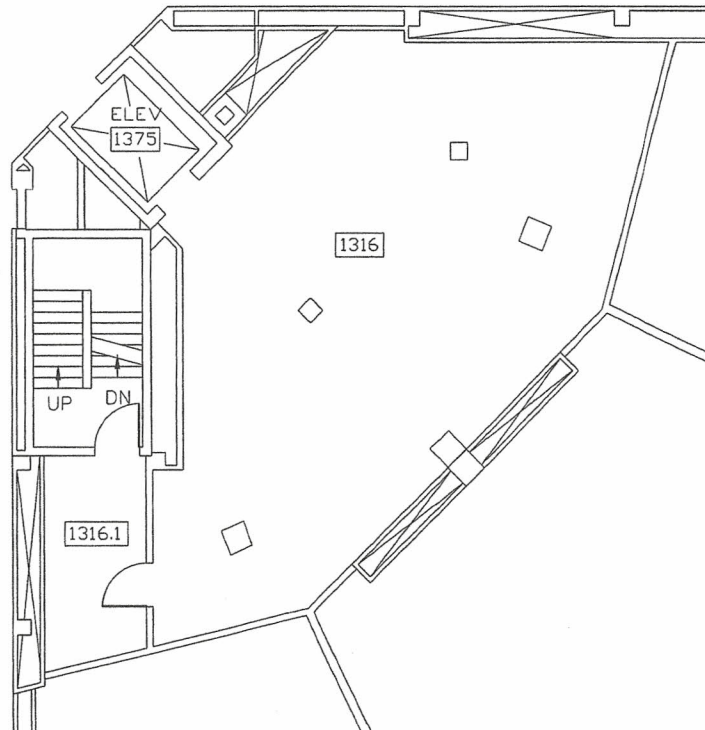


**Disclaimer:** The Wayne State University Facilities Planning and Management notes these documents available on an "as is" basis. These Drawings were created using AutoCAD from AutoCAD and are accurate for Space Management, "Floor Plan" use. The user will hold harmless WSU, its officers, agents, and employees from damages or cost, including reasonable attorney's fees, arising from the use of these drawings.

**Practices:**  
The Wayne State University, Facilities Planning and Management uses these documents available on a "as is" basis. These Drawings were created using AutoCAD from AutoCAD and are accurate for Space Management, "Floor Plan" use. The users all hold harmless VDL, its officers, agents, and employees from damages or costs, including reasonable attorney's fees, arising from the use of these drawings.



SCIENCE HALL  
BUILDING #005  
MEZZANINE FLOOR



Disclaimer:

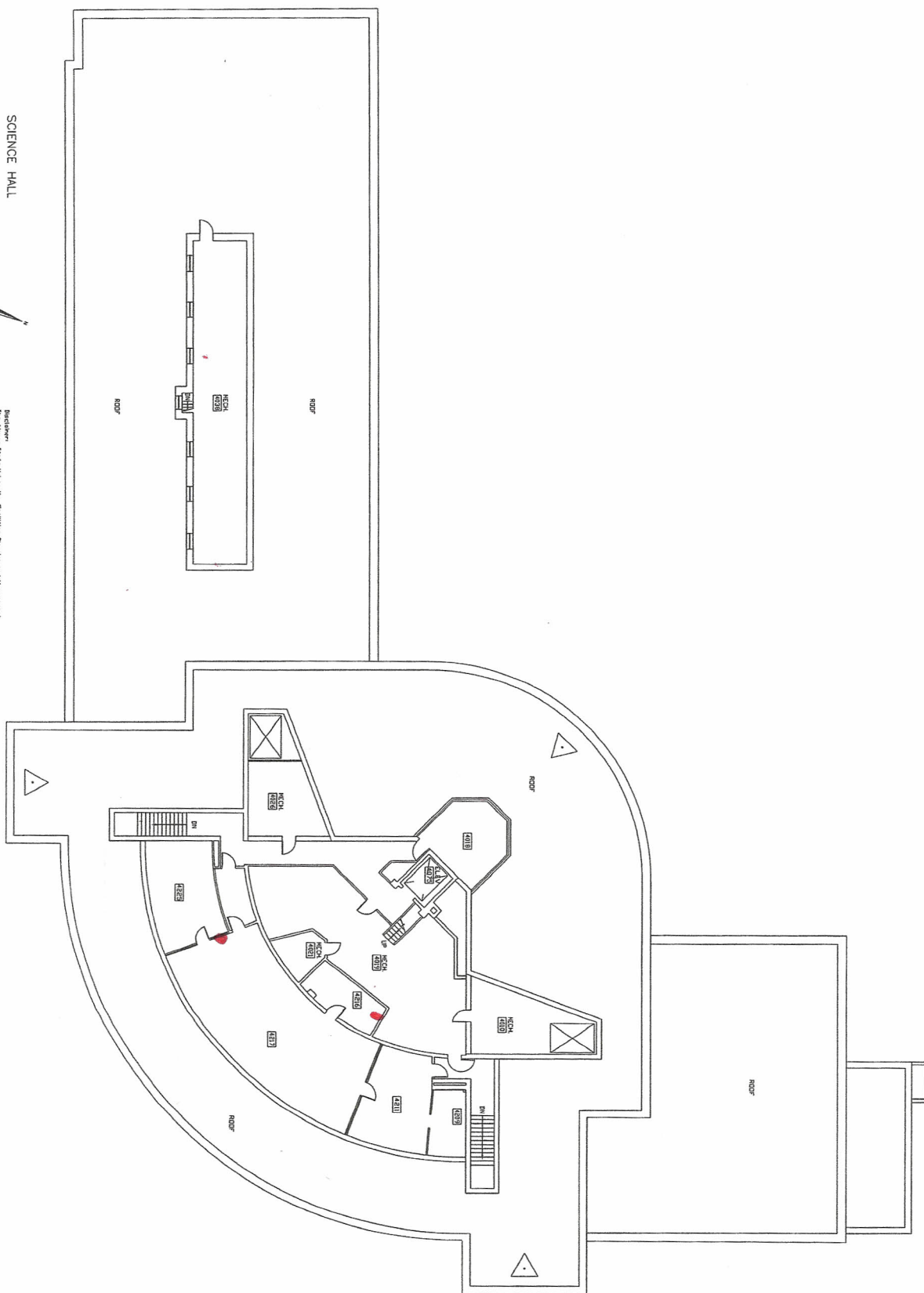
The Wayne State University, Facilities Planning and Management makes these documents available on an "as is" basis. These Drawings were created using AutoCAD from AutoDesk and are accurate for Space Management, 'Floor Plan' use. The users will hold harmless WSU, its officers, agents, and employees from damages or cost, including reasonable attorney's fees, arising from the use of these drawings.

SCIENCE HALL  
BUILDING #005  
FOURTH FLOOR

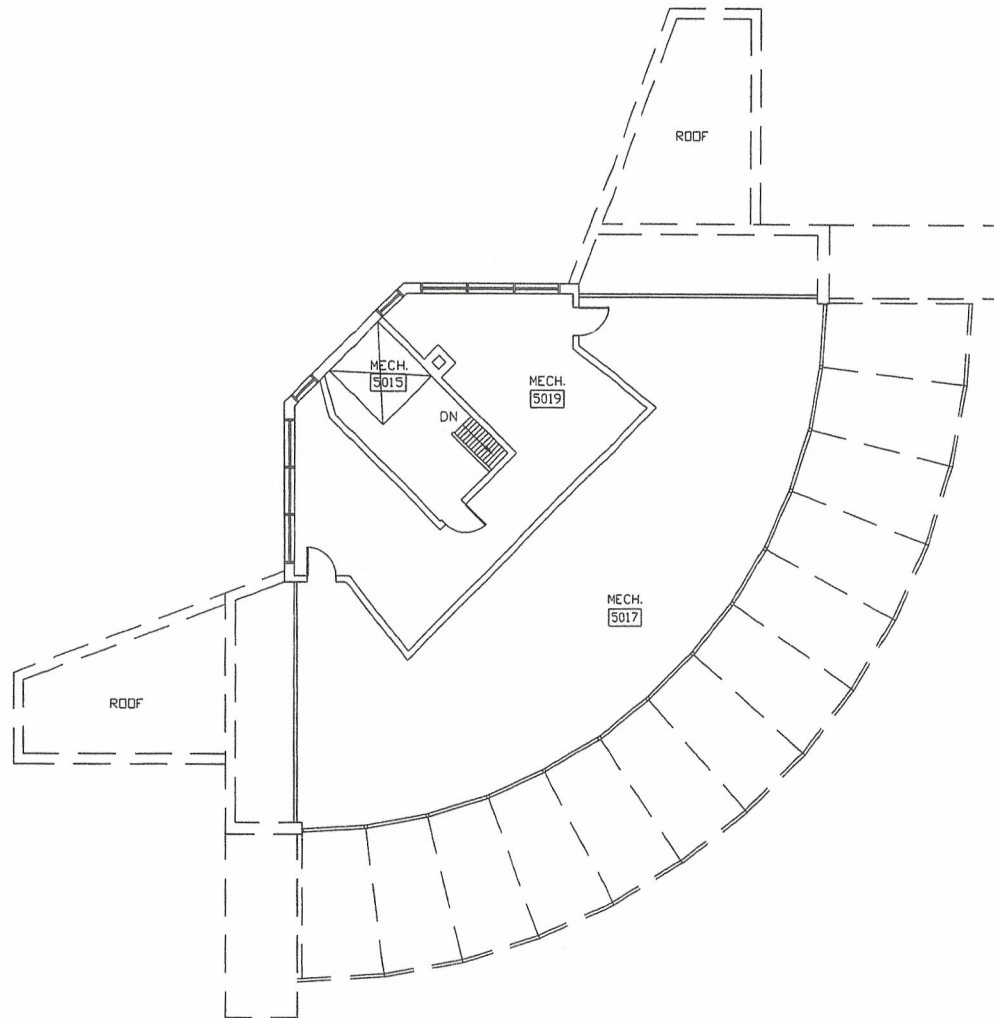
PENTHOUSE



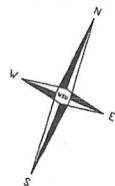
Disclaimer:  
The Wayne State University Facilities Planning and Management  
Department has created this drawing for informational purposes only.  
These drawings were created using AutoCAD from AutoSketch and  
may contain errors. The user assumes all responsibility for the accuracy  
and content of this drawing. The user assumes all responsibility for  
including responsible attorney's fees, arising from the use of these drawings.







SCIENCE HALL  
BUILDING #005  
PENTHOUSE FLOOR



Disclaimer:

The Wayne State University, Facilities Planning and Management makes these documents available on an 'as is' basis. These Drawings were created using AutoCAD from AutoDesk and are accurate for Space Management, 'Floor Plan' use. The users will hold harmless WSU, its officers, agents, and employees from damages or cost, including reasonable attorney's fees, arising from the use of these drawings.

# Wayne State University Substandard Communication Cabling Building Audit Spreadsheet

Room Number	Voice			Data			Notes/Comments
	CAT3	CAT 5	CAT6	CAT 3	CAT 5	CAT6	
2	-	-	-	-	-	-	No Access
12	0	0	0	0	0	0	
13	0	0	0	0	0	0	
16	0	0	1	0	0	1	
16.1	0	0	0	0	0	0	
18	0	0	0	0	0	0	
19	0	0	0	0	0	0	
18.1	0	0	0	0	0	0	
22	0	0	0	0	0	0	
25	1	0	0	1	0	0	
25.1	1	0	0	1	0	0	
27	0	0	0	0	0	0	
27.1	0	0	0	0	0	0	
29	0	0	0	0	0	0	
31	1	0	0	1	0	0	
28	0	0	0	0	0	3	
33	1	0	0	1	0	0	
33.1	0	0	0	0	0	0	
33.2	0	0	0	0	0	0	
33.3	0	0	0	0	0	0	
33.4	0	0	0	0	0	0	
34	2	0	0	2	0	0	
41	1	0	0	1	0	0	
41.1	1	0	0	1	0	0	
41.2	0	0	0	0	0	0	
45	0	0	0	0	0	0	
45.1	0	0	0	0	0	0	
48	0	0	0	0	0	0	

Totals 8 0 1 8 0 4

# Wayne State University Substandard Communication Cabling Building Audit Spreadsheet

Room Number	Voice			Data			Notes/Comments
	CAT3	CAT 5	CAT6	CAT 3	CAT 5	CAT6	
1001	0	0	1	0	0	2	
1001.1	0	0	0	0	0	0	
1002	0	0	1	0	0	2	
1014	0	0	0	0	0	0	
1010	0	0	0	0	0	0	
1015	0	0	0	0	0	0	
1019	0	0	0	0	0	0	
1020	0	0	0	0	0	0	
1024	0	0	0	0	0	0	
1027	1	0	0	0	0	1	
1028	1	0	0	0	0	1	
1035	0	0	0	0	0	0	
1038	0	0	0	0	0	0	
1039	0	0	0	0	0	1	
1040	1	0	0	0	0	1	
1040.1	0	0	0	0	0	0	
1049	0	0	0	0	0	0	
1109	0	0	3	0	0	1	
1117	0	0	3	0	0	1	
1125	0	0	3	0	0	1	
1216	1	0	0	1	0	0	
1218	0	0	0	0	0	0	
Totals	4	0	11	1	0	11	

# Wayne State University Substandard Communication Cabling Building Audit Spreadsheet

Room Number	Voice			Data			Notes/Comments
	CAT3	CAT 5	CAT6	CAT 3	CAT 5	CAT6	
2003	1	0	0	1	0	1	No Access
2004	0	0-	1	0	0	3	
2008	0	0	0	0	0	0	
2003.1	0	0	0	0	0	0	
2012	1	0	0	0	0	0	
2015	0	0	0	0	0	0	
2009	0	0	2	0	0	2	
2018	0	0	1	0	0	2	
2019	0	0	0	0	0	0	
2022	-	-	-	-	-	-	
2024	0	0	0	0	0	0	
2025	0	0	2	0	0	2	
2027	1	0	0	0	0	1	
2028	0	0	1	0	0	2	
2028.1	0	0	0	0	0	0	
2028.2	0	0	0	0	0	0	
2035	0	0	0	0	0	0	
2038	0	0	1	0	0	1	
2039	1	0	0	0	0	1	
2046	0	0	0	0	0	1	
2049	0	0	0	0	0	0	
2050	0	0	0	0	0	0	
2223	0	0	0	0	0	0	
Totals	4	0	8	1	0	16	

# Wayne State University Substandard Communication Cabling Building Audit Spreadsheet

Room Number	Voice			Data			Notes/Comments
	CAT3	CAT 5	CAT6	CAT 3	CAT 5	CAT6	
3001	0	0	0	0	0	0	
3002	1	0	0	1	0	1	
3002.1	1	0	0	1	0	0	
3003	1	0	0	1	0	1	
3003.1	0	0	0	0	0	0	
3008	0	0	0	0	0	0	
3009	2	0	0	2	0	0	
3009.1	0	0	0	0	0	0	
3009.2	2	0	0	1	0	0	
3009.3	1	0	0	1	0	0	
3009.4	1	0	0	1	0	0	
3009.5	0	0	0	0	0	0	
3009.6	2	0	0	2	0	0	
3010	0	0	0	0	0	0	
3012	1	0	0	0	0	0	
3016	1	0	0	1	0	0	
3016.1	2	0	0	2	0	0	
3022	0	0	0	0	0	0	
3027	1	0	0	1	0	0	
3027.1	1	0	0	1	0	0	
3028	0	0	0	0	0	0	
3033	1	0	0	1	2	0	
3037	1	0	0	1	0	0	
3040	1	0	0	1	0	0	
3040.1	0	0	0	0	0	0	
3043	0	0	0	0	0	0	
3049	0	0	0	0	0	0	
3049.1	0	0	0	0	0	0	

Totals            20        0        0        18        2        2

# Wayne State University Substandard Communication Cabling Building Audit Spreadsheet

Room Number	Voice			Data			Notes/Comments
	CAT3	CAT 5	CAT6	CAT 3	CAT 5	CAT6	
3023	1	0	0	1	0	0	
3023.1	1	0	0	1	0	0	
3025	1	0	0	1	0	1	
3025.1	0	0	0	0	0	0	
3025.2	1	0	0	1	0	0	
3219	1	0	0	1	0	0	
3219.1	0	0	0	0	0	0	
3219.2	1	0	0	1	0	0	
3219.3	1	0	0	1	0	0	
3219.4	2	0	0	2	0	0	
3219.5	5	0	0	5	1	0	
3215	0	0	0	0	0	0	
3216	1	0	0	1	0	0	
3217	1	0	0	1	0	0	
3218	1	0	0	1	0	0	
3224	0	0	0	0	0	0	
3225	0	0	0	0	0	0	
Totals	17	0	0	17	1	1	



## Wayne State University Substandard Communication Cabling Building Audit Spreadsheet

Room Number	Voice			Data			Notes/Comments
	CAT3	CAT 5	CAT6	CAT 3	CAT 5	CAT6	
5017	2	0	0	2	0	0	
5019	0	0	0	0	0	0	
Totals	2	0	0	2	0	0	