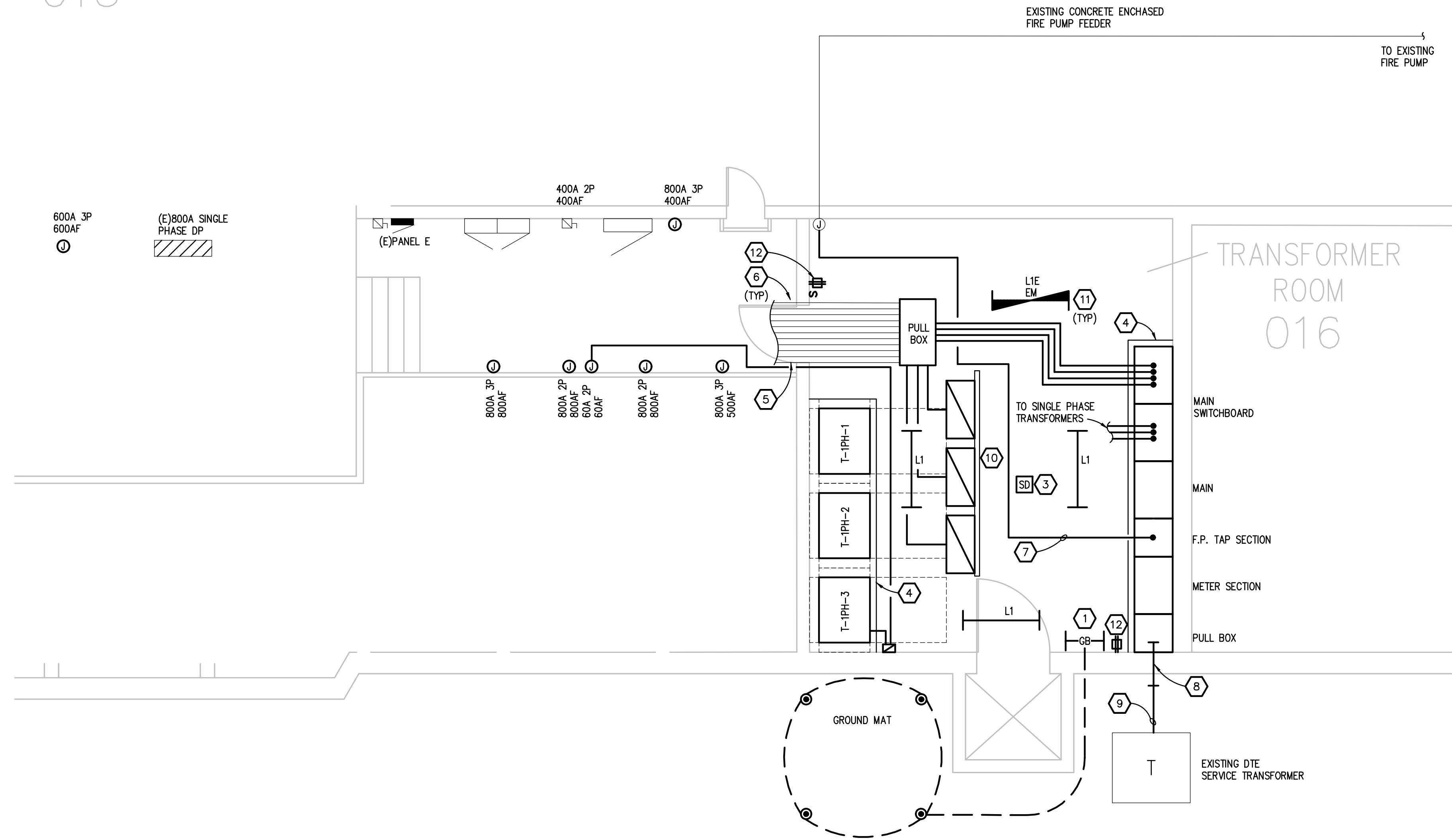
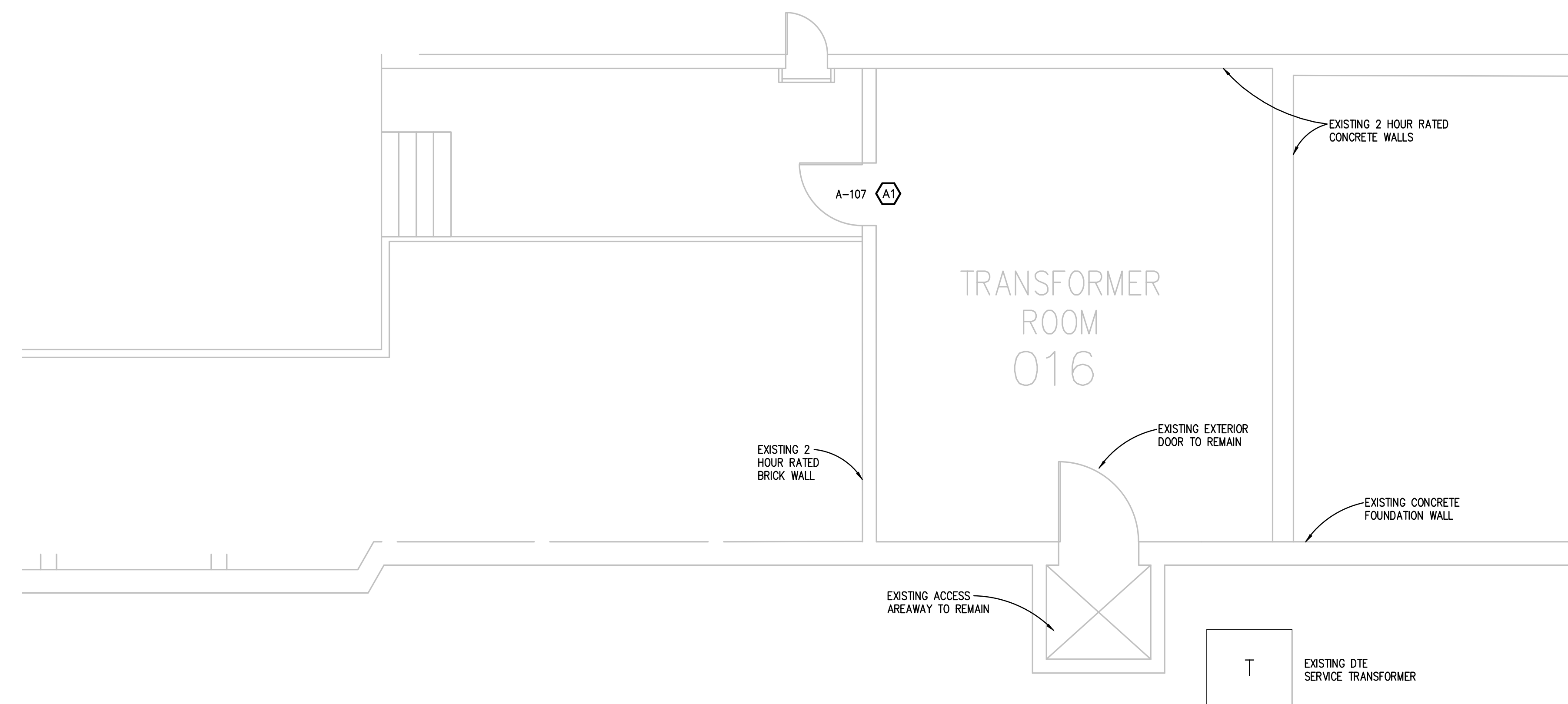


THE FOLLOWING DIMENSION EQUALS ONE INCH WHEN PRINTED TO SCALE.

MECH  
015



4  
E1.1  
**ENLARGED ELECTRICAL NEW WORK PLAN**  
SCALE: 1/4" = 1' - 0"



5  
E1.1  
**ENLARGED ARCHITECTURAL NEW WORK PLAN**  
SCALE: 1/4" = 1' - 0"

**GENERAL NOTES:**

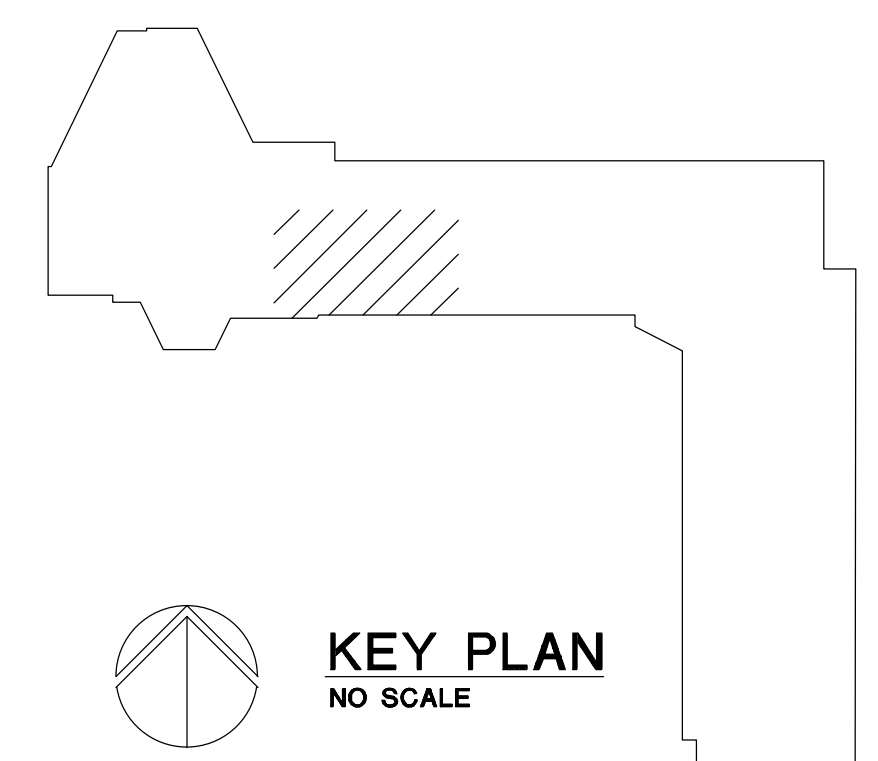
1. THESE DRAWINGS REPRESENT THE GENERAL EXTENT AND ARRANGEMENT OF SYSTEMS, BUT ARE NOT TO BE CONSIDERED FABRICATION DRAWINGS. COORDINATE WITH OTHER TRADES, AND PROVIDE EACH SYSTEM COMPLETE, INCLUDING ALL NECESSARY COMPONENTS, FITTINGS, AND OFFSETS.
2. INSTALL SYSTEMS SUCH THAT REQUIRED CLEARANCE AND SERVICE ACCESS SPACE IS PROVIDED AROUND ALL MECHANICAL AND ELECTRICAL EQUIPMENT, AND AROUND ANY COMPONENTS WHICH REQUIRE SERVICE ACCESS.
3. PROVIDE SUPPLEMENTARY STEEL AS REQUIRED FOR THE PROPER SUPPORT OF ALL SYSTEMS.
4. TRANSFORMER SECONDARY CONDUCTORS SHALL BE SIZED IN ACCORDANCE WITH TRANSFORMER CIRCUIT SIZING SCHEDULE SHOWN ON "ELECTRICAL STANDARD SCHEDULES DRAWING" UNLESS OTHERWISE NOTED.
5. ALL FIRE ALARM DEVICES SHALL BE COMPATIBLE WITH EXISTING SIEMENS FIRE ALARM SYSTEM. PROVIDE NECESSARY COMPONENTS, MODULES, ETC. AS REQUIRED FOR A FULLY FUNCTIONAL SYSTEM. RE-TEST AND CERTIFY EXISTING FIRE ALARM SYSTEM AT COMPLETION OF PROJECT.

**CONSTRUCTION KEY NOTES:**

1. REFER TO SECONDARY SERVICE ENTRANCE GROUNDING DETAIL.
2. NEW GROUND MAT.
3. EXTEND EXISTING FIRE ALARM BRANCH CIRCUIT TO NEW SMOKE DETECTOR AS REQUIRED.
4. PROVIDE 4" CONCRETE HOUSE KEEPING PAD.
5. ROUTE NEW CONDUCTORS THROUGH EXISTING CONDUIT TO EXISTING DISCONNECTS AND DISTRIBUTION PANELS AS REQUIRED.
6. PROVIDE FIRE PROOFING AROUND EXISTING CONDUITS ABOVE DOOR AS REQUIRED.
7. DISCONNECT TEMPORARY FIRE PUMP FEEDER FROM EXISTING DTE SERVICE TRANSFORMER AND RECONNECT TO NEW FIRE PUMP TAP SECTION. ROUTE FIRE PUMP FEEDER THROUGH NEW LADDER TRAY. CUT BACK EXCESS CONDUCTORS AS REQUIRED.
8. CORE EXISTING WALL FOR NEW SERVICE FEED AS REQUIRED. PROVIDE LINK SEAL AS REQUIRED.
9. PROVIDE (1) 4" C TO EXISTING SERVICE TRANSFORMER AS REQUIRED. ROUTE NEW CONDUIT WITH THE EXISTING (3) 4" C ALREADY STUBBED OUT OF THE SERVICE TRANSFORMER. TERMINATE NEW SERVICE FEEDER AT EXISTING DTE TRANSFORMER. COORDINATE REQUIREMENTS WITH DTE.
10. PROVIDE SUPPLEMENTAL STEEL SUPPORT AS REQUIRED.
11. EXTEND EXISTING LIGHTING BRANCH CIRCUIT AS REQUIRED.
12. EXTEND NEAREST 120V RECEPTACLE BRANCH CIRCUIT AS REQUIRED.

**ARCHITECTURAL KEY NOTES:**

- A1. REMOVE AND REPLACE EXISTING HOLLOW METAL DOOR AND FRAME.



**KEY PLAN**  
NO SCALE

06/25/2019  
07/09/2019

REVISION  
ACTION REVIEW  
ADDENDUM 2

5145 Livemore, Suite 100,  
Tel: 248-879-5566 Fax: 248-979-2007  
www.PeterBassoAssociates.com  
PBA Project No. 20181022

**PBA**  
Peter Basso Associates Inc  
CONSULTING ENGINEERS

**WAYNE STATE UNIVERSITY**

PROJECT TITLE  
STATE HALL  
SWITCH BOARD  
WSU PROJECT NO. 016-284939

SHEET TITLE  
ARCHITECTURAL AND  
ELECTRICAL ENLARGED PLANS

DATE  
6/25/2019  
ISSUE  
BIDS

SHEET No.

**AE3.2**