

STUCKY VITALE ARCHITECTS
27172 WOODWARD AVENUE
ROYAL OAK, MI 48067-0925
P. 248.546.6700
F. 248.546.8454
WWW.STUCKYVITALE.COM

STATEMENT OF INTELLECTUAL PROPERTY:
THE IDEAS, CONCEPTS, DRAWINGS AND THOUGHTS CONVEYED HEREIN ARE
THE INTELLECTUAL PROPERTY OF STUCKY VITALE ARCHITECTS. THIS SET OF
DRAWINGS, IN WHOLE OR IN PART, MAY NOT BE REPRODUCED, WITHOUT
THE WRITTEN CONSENT OF STUCKY VITALE ARCHITECTS. THIS INFORMATION
IS PROTECTED UNDER U.S. COPYRIGHT LAW. ALL RIGHTS RESERVED.
Consultants

Seal:

Project :
WSU- DETROIT-
UGL-W360 ACADEMIC
ENGAGEMENT HUB
5155 GULLEN MALL
DETROIT, MI 48202

Key Plan:

DEMOLITION PLAN NOTES

- ALL DEMOLITION WORK REQUIRED IS NOT NECESSARILY LIMITED TO WHAT IS SHOWN ON THE DEMOLITION PLANS. THE INTENT IS TO REMOVE ALL MECHANICAL, ELECTRICAL, AND ARCHITECTURAL ITEMS AS REQUIRED TO FACILITATE NEW CONSTRUCTION.
- COORDINATE SCOPE AND EXTENT OF DEMOLITION WORK WITH NEW WORK PLANS AND DETAILS.
- ALL WALLS, DOORS, FRAMES, AND RELATED HARDWARE ASSEMBLIES DESIGNATED AS "TO BE REMOVED" (SHOWN AS DASHED LINES) SHALL BE COMPLETELY REMOVED AND DISPOSED OF AS DESIGNATED BY OWNER/TENANT. ALL EXISTING WALLS NOT DESIGNATED FOR DEMOLITION SHALL BE PROTECTED FROM DAMAGE AND REMAIN "AS-IS".
- IN OCCUPIED BUILDINGS, ANY CONSTRUCTION BEYOND 48 HOURS MUST BE ISOLATED WITH HARD BARRIER WALL (1 HR. RATED), PER BUILDING CODE. 1 HOUR FIRE RATED PLASTIC BARRIER MAY BE USED, VERIFY WITH LOCAL A/HJ. PROVIDE ANY/ALL DUST CONTROL AND INFECTION CONTROL MEASURES TO ISOLATE ALL WORK TO PROJECT AREA.
- PHASED CONSTRUCTION MAY BE REQUIRED, FINAL NUMBER OF PHASES TBD BY OWNER/ ARCHITECT/ GC PRIOR TO CONSTRUCTION. CONTRACTOR PROVIDE ANY/ALL TEMP. CONSTRUCTION MEASURES AS REQUIRED BY LOCAL A/HJ (EXIT SIGNS, EMERGENCY LIGHTING, CONSTRUCTION LIGHTING, EGRESS SIGNAGE, ETC.).
- ALL EQUIPMENT, DOORS, FRAMES, RELATED HARDWARE, AND DESIGNATED ITEMS TO BE SALVAGED SHALL BE REMOVED, PROTECTED FROM DAMAGE, AND STORED FOR REUSE.
- CLEAN AND REPAIR ALL EXISTING FLOOR FINISHES AS NECESSARY.
- ALL DEMOLITION WORK SHALL BE PERFORMED IN A NEAT AND WORKMANSHIP MANNER. ALL SURFACES ADJACENT TO AND ABUTTING TO THOSE DESIGNATED "TO BE REMOVED" SHALL BE LEFT WITH A SMOOTH AND FLUSH APPEARANCE.
- THE CONTRACTOR SHALL EXERCISE ALL REQUISITE CARE NECESSARY TO ENSURE THAT ALL EQUIPMENT, MATERIALS, FINISHES AND ASSEMBLIES WHICH ARE NOT BEING REMOVED ARE PROTECTED FROM DAMAGE DURING DEMOLITION AND SUBSEQUENT CONSTRUCTION OPERATIONS.
- REFER TO MECHANICAL AND ELECTRICAL DEMOLITION DRAWINGS AND SPECIFICATIONS FOR ADDITIONAL DEMOLITION INFORMATION.
- GENERAL PRECAUTIONS SHALL BE TAKEN AS NECESSARY TO HOLD ALL DISRUPTION, DUST, DIRT, NOISE, AND DEBRIS TO A MINIMUM.
- THE CONTRACTOR SHALL COORDINATE DEMOLITION WORK WITH OWNER TO ENSURE THAT IMPACTS ON THE BALANCE OF THE BUILDING ARE HELD TO A MINIMUM.
- PREPARE ALL SURFACES TO RECEIVE THE NEW WORK AND FINISHES OF THE CONTRACT.
- THE CONTRACTOR SHALL DESIGN, PROVIDE, INSTALL AND MAINTAIN ANY AND ALL TEMPORARY BRACING AS REQUIRED TO ENSURE THE STABILITY OF THE BUILDING ASSEMBLY AND/OR ANY SYSTEMS AND/OR SUB-ASSEMBLIES AND/OR SYSTEMS APPURTENANT THERETO UNTIL SAID ASSEMBLY AND/OR SUB-ASSEMBLIES ARE COMPLETE, SELF-SUPPORTING AND/OR STABLE.

KEYNOTE - DEMOLITION LEGEND

KEYNOTE	KEYNOTE DESCRIPTION
D1	REMOVE EXISTING STOREFRONT SYSTEM, DOOR, AND DOOR FRAME. CONTRACTOR TO COORDINATE SALVAGE WITH OWNER. PATCH AND PAINT AS NECESSARY.
D2	PROTECT EXISTING FLOORING (VCT, CARPET, SHEET VINYL, ETC.) RUBBER WALL BASE, AND MILLWORK DURING CONSTRUCTION
D3	MODIFY EXISTING FLOORING AS REQUIRED FOR NEW OFFICE WALLS. EXISTING FLOORING TO BE SALVAGED AND REUSED. SEE DETAIL 4/G002 FOR FURTHER INFORMATION. SEE NEW WORK PLANS FOR WALL LOCATIONS @ DIMENSIONS.
D4	EXISTING MILLWORK TO BE COMPLETELY REMOVED. EXISTING CARPET TO REMAIN. PATCH AND REPAIR AS NECESSARY.
D5	EXISTING FLOOR CORES TO BE DEMOLISHED. CONTRACTOR TO FILL WITH CONCRETE, LEVELER, ADHESIVE AND CARPET TO MATCH EXISTING TYPE AND PATTERN.
D6	EXISTING PARTIAL HEIGHT WALL TO BE REMOVED. PATCH AND PAINT AS NECESSARY.
D7	WSU TO REMOVE ART IN CONSTRUCTION AREAS. CONTRACTOR TO PATCH AND PAINT AS NECESSARY.

DEMOLITION PLAN LEGEND

EXISTING

- EXISTING SMOKE SEPARATION TO REMAIN
- EXISTING METAL STUD PARTITION TO REMAIN
- EXISTING CMU PARTITION TO REMAIN
- EXISTING CONCRETE WALL TO REMAIN
- EXISTING DOOR TO REMAIN.
- AREA NOT IN CONTRACT (NIC)

DEMO

- DEMO SMOKE SEPARATION
- DEMO 1 HOUR FIRE SEPARATION
- DEMO 2 HOUR FIRE SEPARATION
- DEMO 3 HOUR FIRE SEPARATION
- DEMO METAL STUD PARTITION
- DEMO CMU PARTITION
- DEMO CONCRETE WALL
- DEMO DOOR

PROJECT ALTERNATE PRICING:

- ALT #1: CONTRACTOR TO PRICE OUT REPLACING CARPET IN ALL NEW OFFICES TO MATCH CPT-1.
- ALT #2: CONTRACTOR TO PRICE OUT CONFERENCE ROOM BUILD OUT. INCLUDES NEW WALLS, DOORS, FURNITURE, AND FINISHES.
- ALT #3: CONTRACTOR TO PROVIDE PRICING ON REPLACING ALL 2X4 CEILING LIGHTS IN OPEN STUDY AREA WITH LED FIXTURES TO MATCH NEW FIXTURES IN OFFICES.
- ALT #4: CONTRACTOR TO PRICE OUT PROVIDING FINAL DESIGN, PRINT, AND INSTALL ON THE RECEPTION GLASS WALL.
- ALT #5: CONTRACTOR TO PROVIDE PRICING ON PAINTING EXISTING WALLS OF OPEN STUDY AREA.
- ALT #6: REPLACE GYP. WALL AND PUNCHED WINDOW WITH ALL GLASS WALL FLOOR TO CEILING

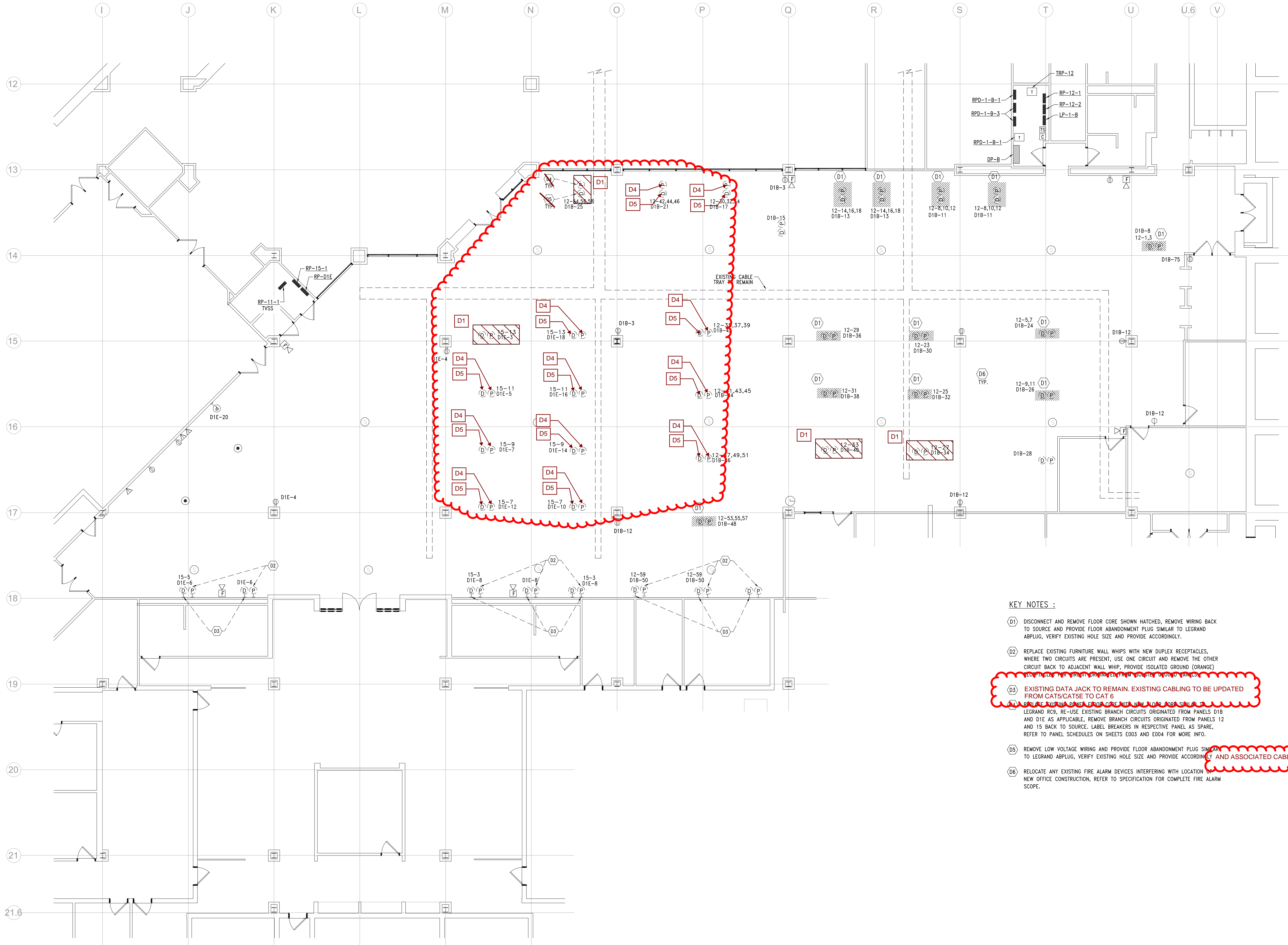
NOTE:
CONTRACTOR RESPONSIBLE FOR PAINTING AND PATCHING WALLS
AND CEILINGS IN EXISTING AREAS WITHIN SCOPE OF WORK THAT ARE
DAMAGED.

Drawn by :
JML,CRB
Checked by :
ARR
Sheet Title :
ARCHITECTURAL DEMOLITION
PLANS

Project No. :
2023.111

Sheet No. :
AD100

DO NOT SCALE DRAWINGS
© 2022 Stucky Vitale Architects



1
ED210
1/8" = 1'-0"

DEMOLITION POWER PLAN - LEVEL 1

KEY NOTES :

- (D1) DISCONNECT AND REMOVE FLOOR CORE SHOWN HATCHED, REMOVE WIRING BACK TO SOURCE AND PROVIDE FLOOR ABANDONMENT PLUG SIMILAR TO LEGRAND ABPLUG, VERIFY EXISTING HOLE SIZE AND PROVIDE ACCORDINGLY.
- (D2) REPLACE EXISTING FURNITURE WALL WHIPS WITH NEW DUPLEX RECEPTACLES, WHERE TWO CIRCUITS ARE PRESENT, USE ONE CIRCUIT AND REMOVE THE OTHER CIRCUIT BACK TO ADJACENT WALL WHIP, PROVIDE ISOLATED GROUND (ORANGE) INSULATION FOR CIRCUIT BRANCHES FROM SOURCE TO OUTLET PANELS.
- (D3) EXISTING DATA JACK TO REMAIN. EXISTING CABLING TO BE UPDATED FROM CAT5/CAT6 TO CAT 6
- (D4) REPLACE EXISTING FLOOR CORE WITH NEW FLOOR CORE SIMILAR TO LEGRAND RC9, RE-USE EXISTING BRANCH CIRCUITS ORIGINATED FROM PANELS D1B AND D1E AS APPLICABLE, REMOVE BRANCH CIRCUITS FROM PANELS 12 AND 15 BACK TO SOURCE, LABEL BREAKERS IN RESPECTIVE PANEL AS SPARE, REFER TO PANEL SCHEDULES ON SHEETS E003 AND E004 FOR MORE INFO.
- (D5) REMOVE LOW VOLTAGE WIRING AND PROVIDE FLOOR ABANDONMENT PLUG SIMILAR TO LEGRAND ABPLUG, VERIFY EXISTING HOLE SIZE AND PROVIDE ACCORDINGLY AND ASSOCIATED CABLING TO CLOSET.
- (D6) RELOCATE ANY EXISTING FIRE ALARM DEVICES INTERFERING WITH LOCATION OF NEW OFFICE CONSTRUCTION, REFER TO SPECIFICATION FOR COMPLETE FIRE ALARM SCOPE.



STUCKY VITALE ARCHITECTS
27172 WOODWARD AVENUE
ROYAL OAK, MI 48067-0925
P. 248.546.6700
F. 248.546.8454
WWW.STUCKYVITALE.COM

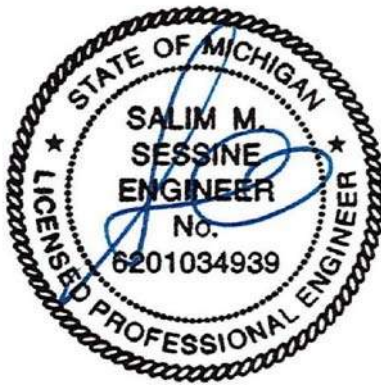
STATEMENT OF INTELLECTUAL PROPERTY:
THE IDEAS, CONCEPTS, DRAWINGS AND THOUGHTS CONTAINED HEREIN ARE THE INTELLECTUAL PROPERTY OF STUCKY VITALE ARCHITECTS. THIS SET OF DRAWINGS, IN WHOLE OR IN PART, MAY NOT BE REPRODUCED, COPIED, OR TRANSMITTED IN ANY FORM OR BY ANY MEANS, WITHOUT THE WRITTEN CONSENT OF STUCKY VITALE ARCHITECTS. THIS INFORMATION IS PROTECTED UNDER U.S. COPYRIGHT LAW, ALL RIGHTS RESERVED.

Consultants



180 HIGH OAK ROAD
BLOOMFIELD HILLS, MI 48304
11248125811610
112481258119368

Seal:



Project :
WSU- DETROIT- UGL
1ST FLOOR STUDENT
REFRESH

5155 GULLEN MALL,
DETROIT, MI 48202

Key Plan:
5155 GULLEN MALL,
DETROIT MI 48202

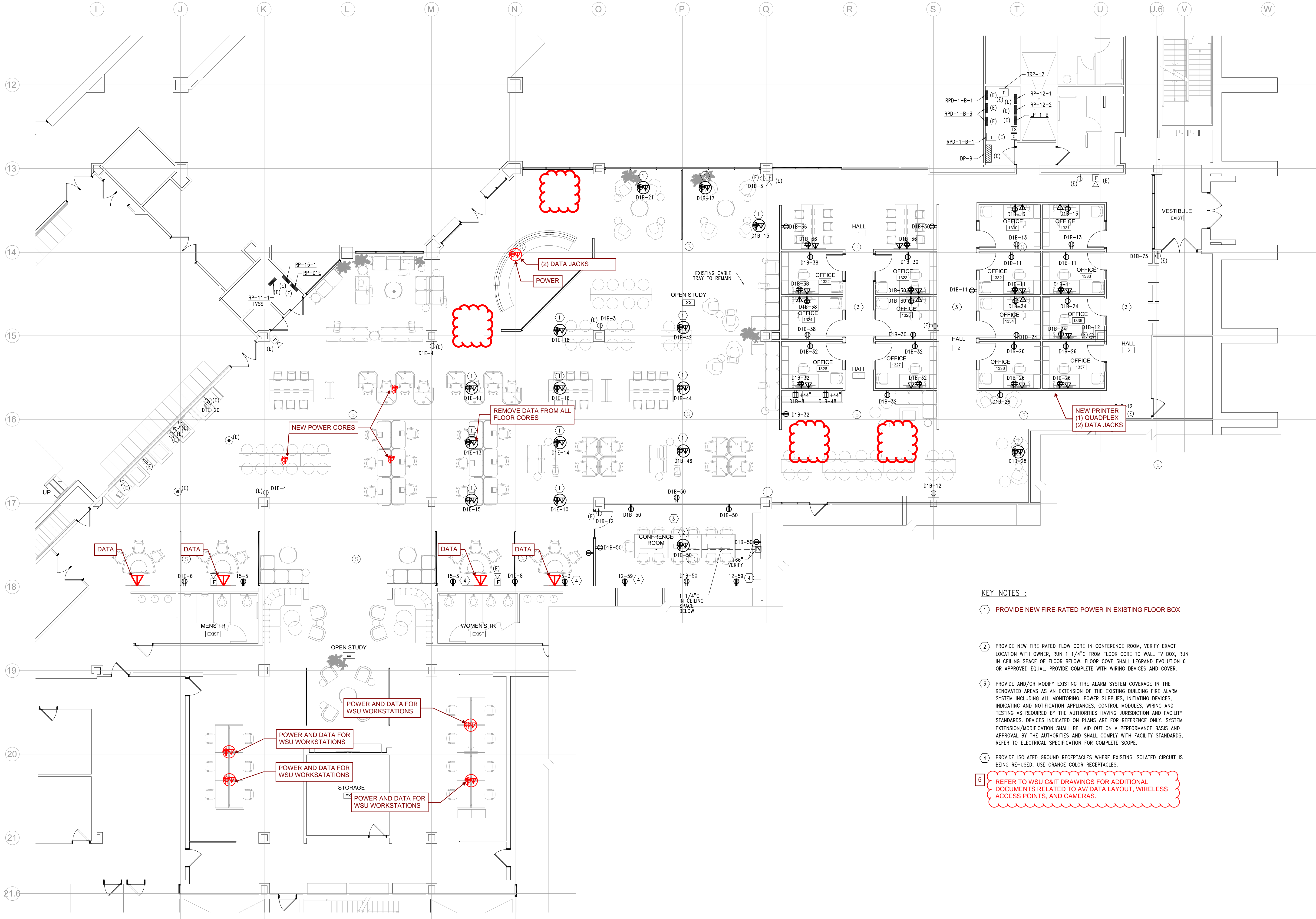
Issued for
BIDS 09/15/2023
ADDENDUM #1 09.28.23
ADDENDUM #4 10.11.23

Drawn by :
LZ
Checked by :
WZ
Sheet Title :
DEMOLITION POWER PLAN -
LEVEL 1

Project No. :
2023.111
Sheet No. :
ED210

DO NOT SCALE DRAWINGS
© 2022 Stucky Vitale Architects

H:\ACAD\FILES\84184040-WSU Undergrad Library\CAD\ELEC\84040-E210-Power.dwg Thu, 14 Sep 2023 - 11:08am



KEY NOTES :

- 1 PROVIDE NEW FIRE-RATED POWER IN EXISTING FLOOR BOX
- 2 PROVIDE NEW FIRE RATED FLOW CORE IN CONFERENCE ROOM, VERIFY EXACT LOCATION WITH OWNER, RUN 1 1/4" FROM FLOOR CORE TO WALL TV BOX, RUN IN CEILING SPACE OF FLOOR BELOW. FLOOR COVE SHALL LEGRAND EVOLUTION 6 OR APPROVED EQUAL, PROVIDE COMPLETE WITH WIRING DEVICES AND COVER.
- 3 PROVIDE AND/OR MODIFY EXISTING FIRE ALARM SYSTEM COVERAGE IN THE RENOVATED AREAS AS AN EXTENSION OF THE EXISTING BUILDING FIRE ALARM SYSTEM INCLUDING ALL MONITORING, POWER SUPPLIES, INITIATING DEVICES, INDICATING AND NOTIFICATION APPLIANCES, CONTROL MODULES, WIRING AND TESTING AS REQUIRED BY THE AUTHORITIES HAVING JURISDICTION AND FACILITY STANDARDS. DEVICES INDICATED ON PLANS ARE FOR REFERENCE ONLY. SYSTEM EXTENSION/MODIFICATION SHALL BE LAID OUT ON A PERFORMANCE BASIS AND APPROVAL BY THE AUTHORITIES AND SHALL COMPLY WITH FACILITY STANDARDS, REFER TO ELECTRICAL SPECIFICATION FOR COMPLETE SCOPE.
- 4 PROVIDE ISOLATED GROUND RECEPTACLES WHERE EXISTING ISOLATED CIRCUIT IS BEING RE-USED, USE ORANGE COLOR RECEPTACLES.
- 5 REFER TO WSU C&IT DRAWINGS FOR ADDITIONAL DOCUMENTS RELATED TO AV/ DATA LAYOUT, WIRELESS ACCESS POINTS, AND CAMERAS.



STUCKY VITALE ARCHITECTS
27172 WOODWARD AVENUE
ROYAL OAK, MI 48067-0925
P. 248.546.6700
F. 248.546.8454
WWW.STUCKYVITALE.COM

STATEMENT OF INTELLECTUAL PROPERTY:
THE IDEAS, CONCEPTS, DRAWINGS AND THOUGHTS COVERED HEREIN ARE THE INTELLECTUAL PROPERTY OF STUCKY VITALE ARCHITECTS. THIS SET OF DRAWINGS, IN WHOLE OR IN PART, MAY NOT BE REPRODUCED, WITHOUT THE WRITTEN CONSENT OF STUCKY VITALE ARCHITECTS. THIS INFORMATION IS PROTECTED UNDER U.S. COPYRIGHT LAW. ALL RIGHTS RESERVED.

Consultants



180 HIGH OAK ROAD
BLOOMFIELD HILLS, MI 48304
11248125811610
112481258116308

Seal:



Project :
WSU- DETROIT- UGL
1ST FLOOR STUDENT
REFRESH

5155 GULLEN MALL,
DETROIT, MI 48202

Key Plan:
5155 GULLEN MALL,
DETROIT MI 48202

Issued for
BIDS 09/15/2023
ADDENDUM #1 09.28.23
ADDENDUM #4 10.11.23

Drawn by :
LZ
Checked by :
WZ
Sheet Title :
POWER PLAN - LEVEL 1

Project No. :
2023.111
Sheet No. :
E210



STUCKY VITALE ARCHITECTS
27172 WOODWARD AVENUE
ROYAL OAK, MI 48067-0925
P. 248.546.6700
F. 248.546.8454
WWW.STUCKYVITALE.COM

STATEMENT OF INTELLECTUAL PROPERTY:
THE IDEAS, CONCEPTS, DRAWINGS AND THOUGHTS CONVEYED HEREIN ARE
THE INTELLECTUAL PROPERTY OF STUCKY VITALE ARCHITECTS. THIS SET OF
DRAWINGS, IN WHOLE OR IN PART, MAY NOT BE REPRODUCED, WITHOUT
THE WRITTEN CONSENT OF STUCKY VITALE ARCHITECTS. THIS INFORMATION
IS PROTECTED UNDER U.S. COPYRIGHT LAW. ALL RIGHTS RESERVED.

Consultants

Seal:

Project :
WSU- DETROIT-
UGL-W360 ACADEMIC
ENGAGEMENT HUB
5155 GULLEN MALL
DETROIT, MI 48202

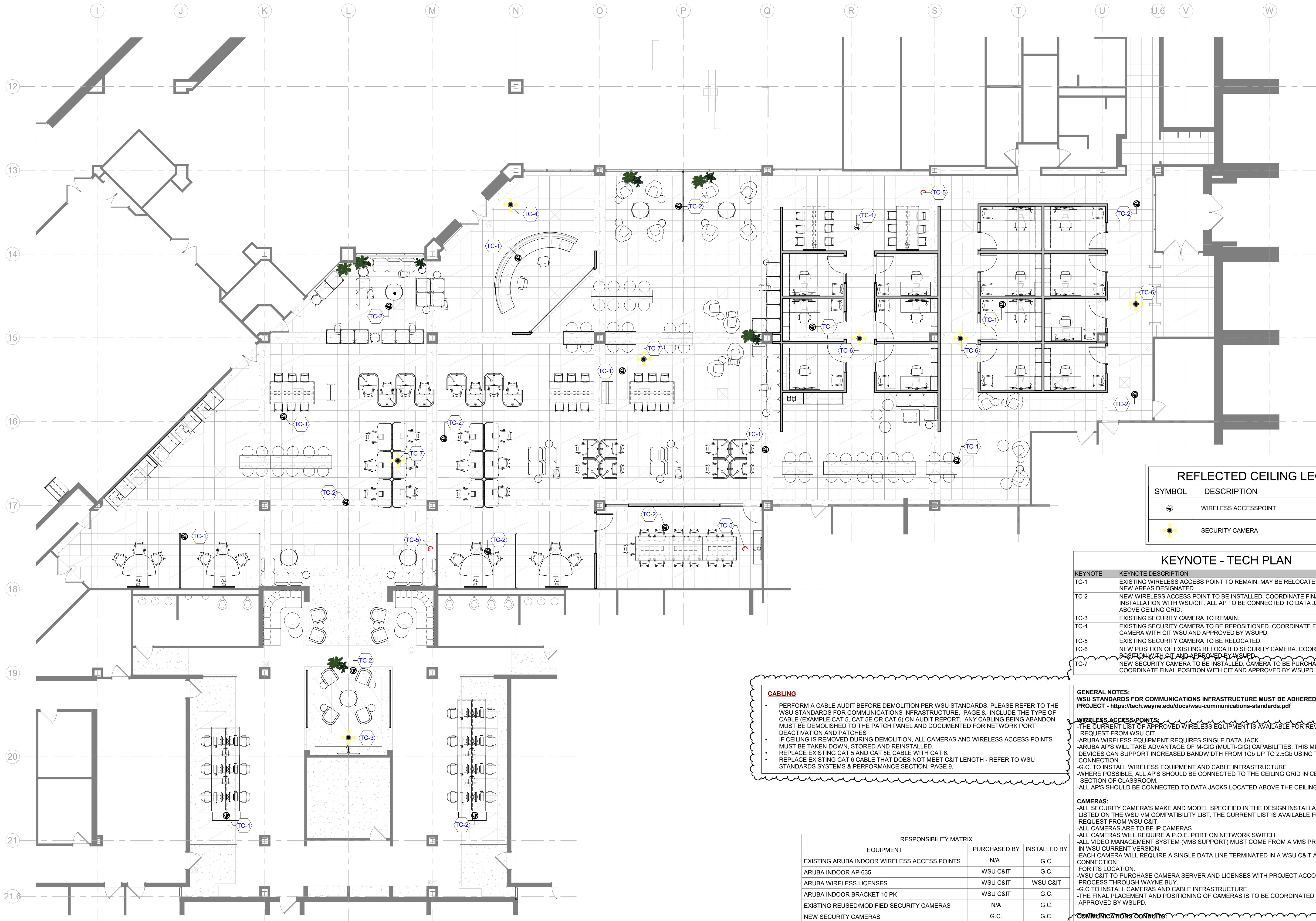
Key Plan:

Issued for
ADDENDUM #3 10.05.23
ADDENDUM #4 10.11.23

Drawn by :
JML
Checked by :
ARR
Sheet Title :
ARCHITECTURAL
TECHNOLOGY PLAN

Project No. :
2023.111

Sheet No. :
TE001



REFLECTED CEILING LEGEND		
SYMBOL	DESCRIPTION	CODE
	WIRELESS ACCESSPOINT	
	SECURITY CAMERA	

KEYNOTE - TECH PLAN	
KEYNOTE	KEYNOTE DESCRIPTION
TC-1	EXISTING WIRELESS ACCESS POINT TO REMAIN. MAY BE RELOCATED TO ACCOMMODATE NEW AREAS DESIGNATED.
TC-2	NEW WIRELESS ACCESS POINT TO BE INSTALLED. COORDINATE FINAL POSITION AND INSTALLATION WITH WSU/CIT. ALL AP TO BE CONNECTED TO DATA JACKS LOCATED ABOVE CEILING GRID.
TC-3	EXISTING SECURITY CAMERA TO REMAIN.
TC-4	EXISTING SECURITY CAMERA TO BE REPOSITIONED. COORDINATE FINAL POSITION OF CAMERA WITH CIT WSU AND APPROVED BY WSUPD.
TC-5	EXISTING SECURITY CAMERA TO BE RELOCATED.
TC-6	NEW POSITION OF EXISTING RELOCATED SECURITY CAMERA. COORDINATE FINAL POSITION WITH CIT AND APPROVED BY WSUPD.
TC-7	NEW SECURITY CAMERA TO BE INSTALLED. CAMERA TO BE PURCHASED BY G.C. COORDINATE FINAL POSITION WITH CIT AND APPROVED BY WSUPD.

GENERAL NOTES:
WSU STANDARDS FOR COMMUNICATIONS INFRASTRUCTURE MUST BE ADHERED TO BY THE PROJECT - <https://tech.wayne.edu/docs/wsuc-communications-standards.pdf>

WIRELESS ACCESS POINTS:
-THE CURRENT LIST OF APPROVED WIRELESS EQUIPMENT IS AVAILABLE FOR REVIEW UPON REQUEST FROM WSU CIT.
-ARUBA WIRELESS EQUIPMENT REQUIRES SINGLE DATA JACK
-ARUBA AP'S WILL TAKE ADVANTAGE OF M-GIG (MULTI-GIG) CAPABILITIES. THIS MEANS THAT NEWER DEVICES CAN SUPPORT INCREASED BANDWIDTH FROM 1Gb UP TO 2.5Gb USING THE SAME PHYSICAL CONNECTION.
-G.C. TO INSTALL WIRELESS EQUIPMENT AND CABLE INFRASTRUCTURE
-WHERE POSSIBLE, ALL AP'S SHOULD BE CONNECTED TO THE CEILING GRID IN CENTER MOST SECTION OF CLASSROOM.
-ALL AP'S SHOULD BE CONNECTED TO DATA JACKS LOCATED ABOVE THE CEILING TILES.

CAMERAS:
-ALL SECURITY CAMERA'S MAKE AND MODEL SPECIFIED IN THE DESIGN INSTALLATION MUST BE LISTED ON THE WSU VM COMPATIBILITY LIST. THE CURRENT LIST IS AVAILABLE FOR DESIGN UPON REQUEST FROM WSU C&IT.
-ALL CAMERAS ARE TO BE IP CAMERAS
-ALL CAMERAS WILL REQUIRE A P.O.E. PORT ON NETWORK SWITCH.
-ALL VIDEO MANAGEMENT SYSTEM (VMS SUPPORT) MUST COME FROM A VMS PROVIDED CERTIFIED IN WSU CURRENT VERSION.
-EACH CAMERA WILL REQUIRE A SINGLE DATA LINE TERMINATED IN A WSU C&IT APPROVED CONNECTION FOR ITS LOCATION.
-WSU C&IT TO PURCHASE CAMERA SERVER AND LICENSES WITH PROJECT ACCOUNT NUMBER AND PROCESS THROUGH WAYNE BUY.
-G.C. TO INSTALL CAMERAS AND CABLE INFRASTRUCTURE.
-THE FINAL PLACEMENT AND POSITIONING OF CAMERAS IS TO BE COORDINATED WITH CIT AND APPROVED BY WSUPD.

COMMUNICATIONS CONDUITS:
-ALL COMMUNICATIONS CONDUITS IN THE (14) NEW OFFICES MUST FOLLOW WSU STANDARDS FOR COMMUNICATIONS INFRASTRUCTURE, PAGE 27-29.
-CONDUITS MUST HAVE A 90-DEGREE BEND AT THE TOP IF GOING INTO CEILING SPACE.
-SUBMITTALS MUST BE PROVIDED TO CIT FOR APPROVAL PER THE STANDARDS, PAGE 26 - BEFORE ANY LOW VOLTAGE WORK BEGINS.
-LOW VOLTAGE INSTALLER CERTIFICATIONS MUST BE PROVIDED PER THE STANDARDS

CABLING
• PERFORM A CABLE AUDIT BEFORE DEMOLITION PER WSU STANDARDS. PLEASE REFER TO THE WSU STANDARDS FOR COMMUNICATIONS INFRASTRUCTURE, PAGE 8. INCLUDE THE TYPE OF CABLE (EXAMPLE CAT 5, CAT 5E OR CAT 6) ON AUDIT REPORT. ANY CABLING BEING ABANDON MUST BE DEMOLISHED TO THE PATCH PANEL AND DOCUMENTED FOR NETWORK PORT DEACTIVATION AND PATCHES
• IF CEILING IS REMOVED DURING DEMOLITION, ALL CAMERAS AND WIRELESS ACCESS POINTS MUST BE TAKEN DOWN, STORED AND REINSTALLED.
• REPLACE EXISTING CAT 5 AND CAT 5E CABLE WITH CAT 6.
• REPLACE EXISTING CAT 6 CABLE THAT DOES NOT MEET C&IT LENGTH - REFER TO WSU STANDARDS SYSTEMS & PERFORMANCE SECTION, PAGE 9.

RESPONSIBILITY MATRIX		
EQUIPMENT	PURCHASED BY	INSTALLED BY
EXISTING ARUBA INDOOR WIRELESS ACCESS POINTS	N/A	G.C
ARUBA INDOOR AP-635	WSU C&IT	G.C.
ARUBA WIRELESS LICENSES	WSU C&IT	WSU C&IT
ARUBA INDOOR BRACKET 10 PK	WSU C&IT	G.C.
EXISTING REUSED/MODIFIED SECURITY CAMERAS	N/A	G.C.
NEW SECURITY CAMERAS	G.C.	G.C.