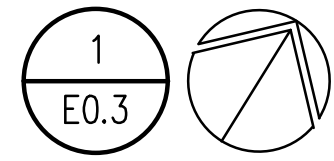
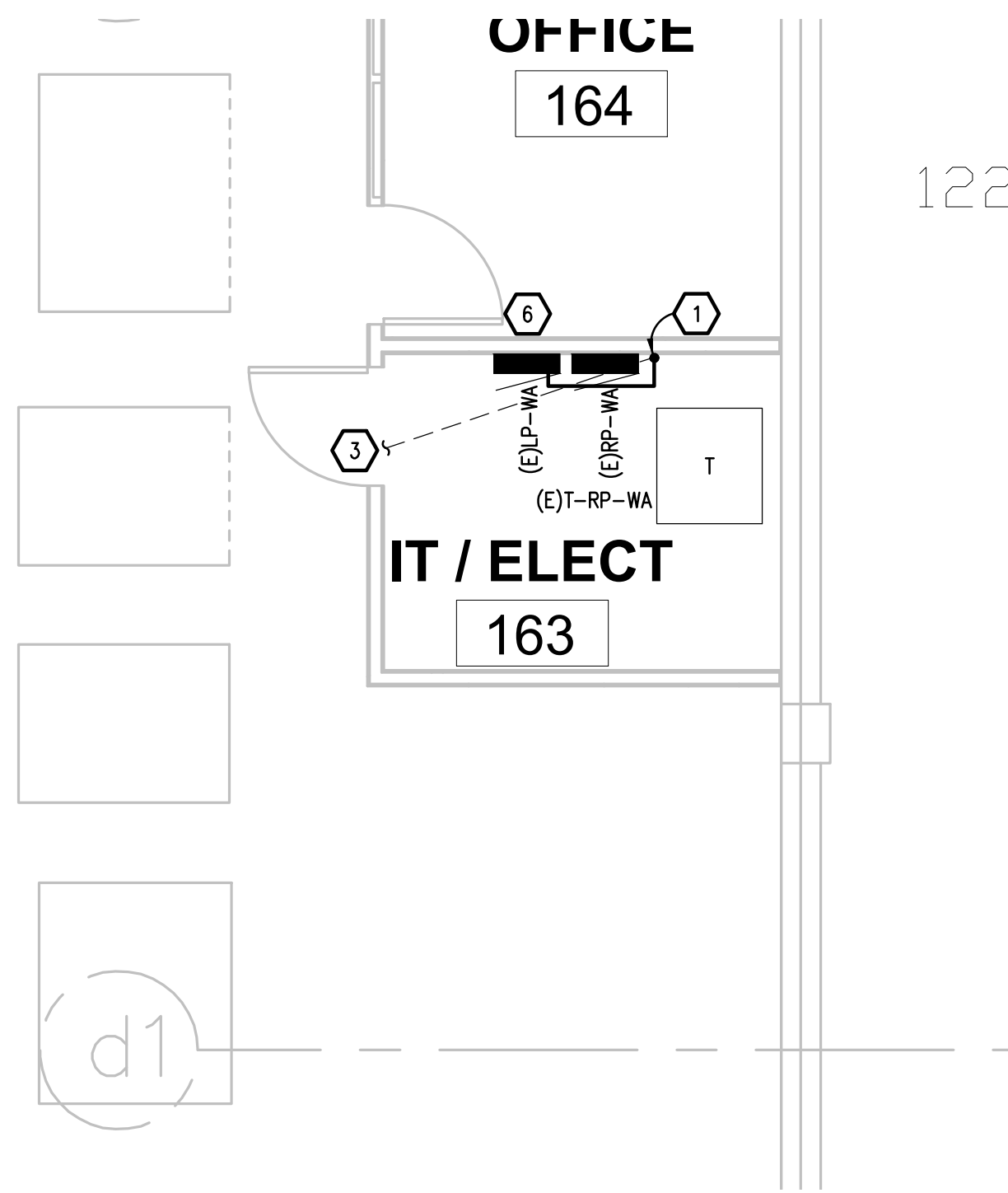
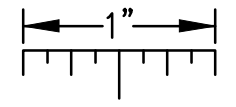
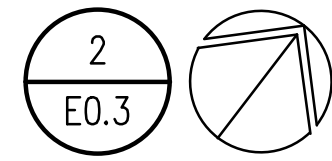
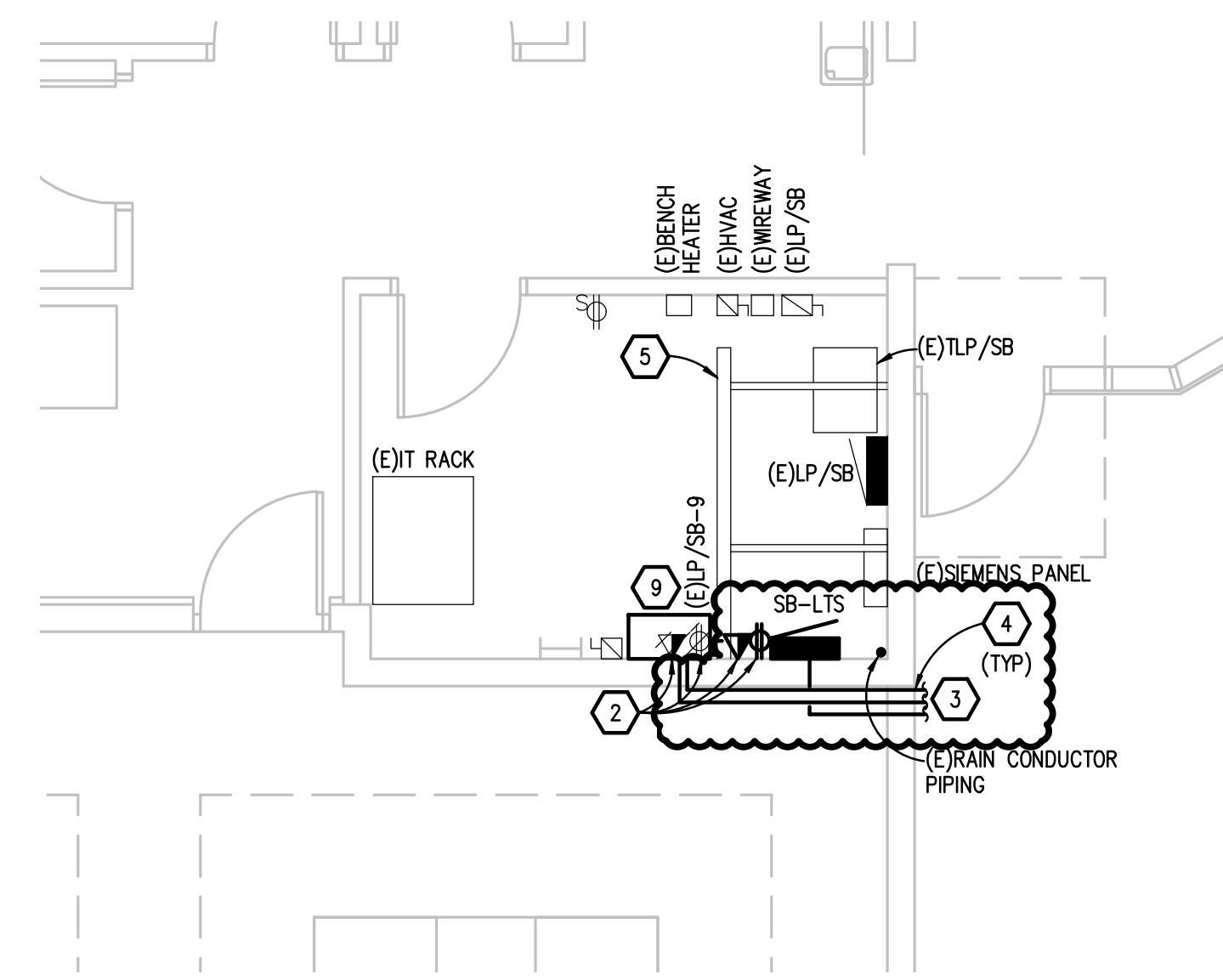


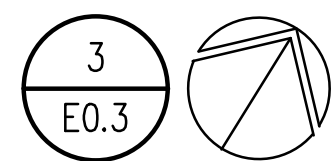
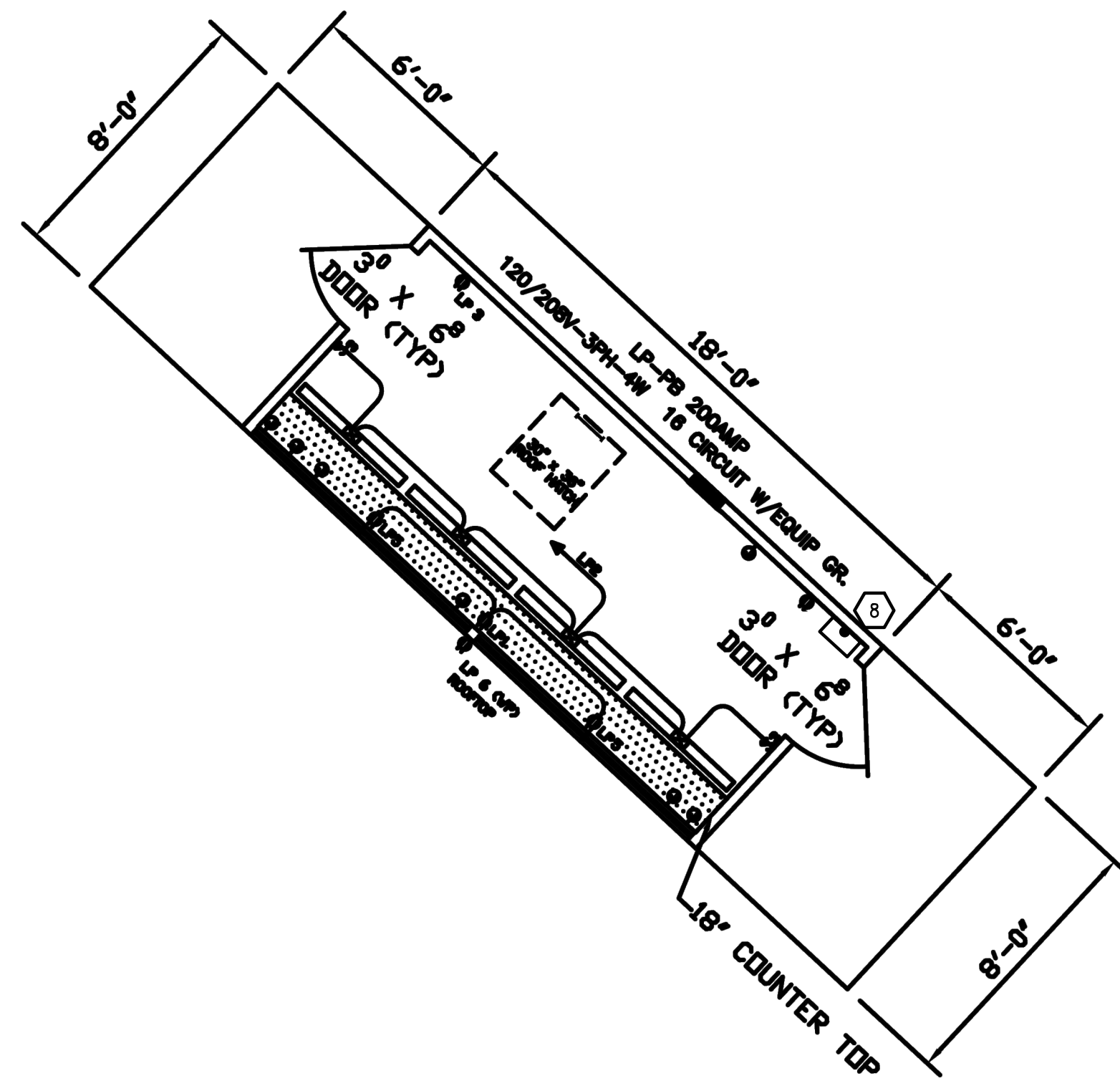
THE FOLLOWING DIMENSION EQUALS ONE INCH WHEN PRINTED TO SCALE.



ELECTRICAL ROOM ENLARGED PLAN
SCALE: 1/4" = 1' - 0"



ELECTRICAL ENLARGED PLAN
SCALE: 1/4" = 1' - 0"



PRESSBOX ENLARGED PLAN
SCALE: 1/4" = 1' - 0"

ELECTRICAL GENERAL NOTES:

1. THESE DRAWINGS REPRESENT THE GENERAL EXTENT AND ARRANGEMENT OF SYSTEMS, BUT ARE NOT TO BE CONSIDERED FABRICATION DRAWINGS. COORDINATE WITH OTHER TRADES, AND PROVIDE EACH SYSTEM COMPLETE, INCLUDING ALL NECESSARY COMPONENTS, FITTINGS, AND OFFSETS.
2. INSTALL SYSTEMS SUCH THAT REQUIRED CLEARANCE AND SERVICE ACCESS SPACE IS PROVIDED AROUND ALL MECHANICAL AND ELECTRICAL EQUIPMENT, AND AROUND ANY COMPONENTS WHICH REQUIRE SERVICE ACCESS.
3. PROVIDE SUPPLEMENTARY STEEL AS REQUIRED FOR THE PROPER SUPPORT OF ALL SYSTEMS.

CONSTRUCTION KEY NOTES:

1. EXTEND EXISTING 2-1/2" STUB UP TO (E)LP-WA AS REQUIRED.
2. RELOCATE EXISTING DATA AND RECEPTACLE TO MAKE ROOM FOR NEW MUSCO CONTROL AND MONITORING CABINET AS REQUIRED.
3. CONTINUATION ON E0.3.
4. CORE EXISTING WALL FOR SB-LTS FEEDER AND MUSCO BRANCH CIRCUITS AS REQUIRED.
5. EXISTING STEEL STRUCTURE ABOVE.
6. PROVIDE NEW 100A CIRCUIT BREAKER IN EXISTING PANELBOARD. REMOVE EXISTING SINGLE POLE CIRCUIT BREAKERS TO MAKE SPACE AS REQUIRED.
7. FIRE PROOF PENETRATION AS REQUIRED. PROVIDE UL LISTING OF FIRE PROOFING ON INSIDE WALL. FIRE PROOFING IS TO BE INSPECTED BY THE WSU FIRE MARSHALL.
8. MUSCO TOUCH SCREEN COMMUNICATION CABINET FURNISHED BY MUSCO CONTRACTOR INSTALLED. COORDINATE FINAL LOCATION OF CABINET WITH OWNER PRIOR TO INSTALL. STUB UP COMMUNICATION CONDUIT AT FINAL LOCATION OF COMMUNICATION CABINET TO MUSCO CONTROL AND MONITORING CABINET IN ELECTRICAL ROOM 100.
9. CONTROL AND MONITORING CABINET FURNISHED BY MUSCO CONTRACTOR INSTALLED. PROVIDE 120V CIRCUIT POWER FROM SPARE CIRCUIT BREAKER IN (E)LP-SB AS REQUIRED.

REVISION
ADDENDUM 1
03/04/2020

5345 Livernois, Suite 100
Troy, Michigan 48068-3276
Tel: 248-879-5666 Fax: 248-879-0077
www.PeterBassoAssociates.com
PBA Project No. 2020.0008



PROJECT TITLE
WSU 099- SOFTBALL LIGHTING

WSU Project No. 099-330083
1300 W. Warren Ave, Detroit, MI 48208

SHEET TITLE
ENLARGED PLANS

DATE
02/14/2020
ISSUE
BIDS

SHEET No.

E5.1

Not For Construction