



Division of Finance and Business Operations

Procurement & Strategic Sourcing
5700 Cass Avenue, suite 4200
Detroit, Michigan 48202
(313) 577-3734
FAX (313) 577-3747

January 12, 2018

**Addendum #5 for Request for Proposal
For Campus Health Clinic Relocation: Project 122-293203
Dated January 2, 2018**

The Addendum must be acknowledged on your lump sum bid.

NOTE: You must have attended a prebid conference in order to be eligible to bid on a particular project. Receipt of minutes or addenda without being at a prebid conference does not qualify your company to bid.

Please find the following questions and clarifications with regards to the above RFP opportunity.

1. Question: Regarding the Wayne State University project: drawing A5-03, elevation 1/A102; has a note that states "(4) perforated metal canopy by landlord". Above that note another note reads "(3) awning signs - 9" high letters". As a sign vendor are we to quote the whole "awning" or are we to quote only the 9" high letters that attach to the "canopy"?

Answer: **SEE RESPONSE TO QUESTION #23 IN ADDENDUM #3. THE AWNING (CANOPY) IS PROVIDED BY THE LANDLORD. QUOTE ONLY THE 9" HIGH LETTERS TO ATTACH TO THE METAL CANOPY.**

2. Can you provide a Section cut of Exterior window sill of Corian Caribbean at exterior windows For the resin wall panels, what is the thickness of Lumicor mounted to walls 1/4" or 3/8"?

Answer: **1/4" AS LISTED ON IN SPECIFICATION SECTION 10 20 00-4. SECTION CUT WILL BE PROVIDED WITH ADDENDUM #5 ISSUE.**

3. Detail 23/ A5-03 shows the ALS-5 using the Unistrut 3300 as a vertical support standard - what is to be used to attach it to the shelves and side's?

Answer: **SPECIFICATION SECTION 06 41 16, PAGE 6, SECTION 2.7 DESCRIBES THE WALL SHELVING. PROVIDE UNISTRUT HARDWARE THAT ALLOWS THE SHELVING TO BE ATTACHED WITH BOLTS.**

4. Could we use KV85 standards with 85ANO24" heavy duty brackets in lieu of?

Answer: **KV85 STANDARDS ARE ACCEPTABLE. BRACKET IS NOT ACCEPTABLE. A SUBSTITUTION FOR A BRACKET SIMILAR TO THE DETAIL WILL BE CONSIDERED.**

5. Drawing A2-00 Please clarify: The demising wall of the build out space, shown at the right end of the space, is a wall that is already in place?

Answer: **CORRECT.**

6. If not, did the existing "white shell" sprinkler protection take this wall's location into consideration and as such, has already properly spaced sprinkler heads in their relationship to this wall, on the "white shell" side of it?

Answer: It has been decided that Shambaugh, the base building subcontractor, will supply a 3" main stubbed off at the demising wall. The Health Clinic contractor is responsible for installing a complete fire suppression system connected to that 3" main.

7. Does the scope of fire protection for the build out require any consideration be given to revisions to the sprinkler system head spacing on the "white shell" side, as a result of the introduction of this demising wall.

Answer: It has been decided that Shambaugh, the base building subcontractor, will supply a 3" main stubbed off at the demising wall. The Health Clinic contractor is responsible for installing a complete fire suppression system connected to that 3" main.

13. Question: Does the mechanical engineer have an Insulation application schedule for HW pipe and duct? 20 07 00.1.4 and 1.5 says insulation materials and thicknesses are scheduled on the drawings, but none of the mechanical drawings show either schedule.

Answer: **HW insulation is indicated in the ABOVEGROUND PLUMBING PIPE & ACCESSORY INSULATION APPLICATION SCHEDULE, ductwork is not insulated.**

14. Question: Ref detail 13/G-03: This detail show insulation on both sides of walls that extend above ceiling only. Is the ceiling insulation to cover the entire ceiling, or a certain distance from the face of wall?

Answer: **DETAIL 13/G-03 CLEARLY DIMENSIONS THE CEILING INSULATION REQUIREMENT. "2'-0" MIN ACOUSTIC INSULATION" EACH SIDE OF THE PARTITION.**

18. Question: Please advise if it is acceptable to use alternate manufacturers for the swing doors, sliding window and sliding doors. We plan on using the following manufacturers due to pricing and availability issues experienced with the specified manufacturers:
- a. Interior Vestibule swing doors/sidelites – Tubelite, Inc. 4500 Series framing with medium stile door.
 - b. Interior horizontal by-passing window – CRL Daisy Pass-Thru Assembly.
 - c. Interior sliding doors – U.S. Aluminum Series 2000 Narrow-stile sliding entrance door.

Answer: **LISTED PRODUCTS ARE ACCEPTABLE.**

19. Please advise on required glass types at sliding window and sliding door, where specified as "Linen" Frosted Privacy Glass. I could not locate any part numbers for this in the spec, so we would like to use 1/4" clear tempered as a base with an alternate for film:
- a. 3M Fasara SH2LNCR Linen Crystal

Answer: **FILM NOT ACCEPTABLE. GLASS TYPES FOR THE SLIDING WINDOWS AND SLIDING DOORS ARE SPECIFIED IN INTERIOR SLIDING GLASS DOORS SPECIFICATION SECTION 08 32 13 PAGE 3, 2.2 COMPONENTS G. GLASS.**

20. Question: Regarding glass/glazing, one supplier was wondering if the Linen Frosted Privacy Tempered Glass is frosted glass or a vinyl film applied to the glass? I cannot find any clarification in the specs. I am told it is better to just use an acid etched glass if possible. Please advise.

Answer: **SPECIFICATION SECTION 08 32 13 STATES THAT THE LINEN PATTERN IS CAST ON THE BACK OF THE GLASS. THE LINEN PATTERN WAS SELECTED FROM THE SPACE PLUS CUT SHEET THAT WAS INCLUDED IN THE SPECIFICATION BOOK, THIS SHOWS THE LINEN GLASS TYPE.**

21. Question: Can you please clarify what type of material R-1 is. The finish legend shows it as a 24" x 24" tile. The specs show it to be roll goods (49'2" x 4') at 2mm. Which is correct?

Answer: **SEE RESPONSE TO QUESTION #2 IN ADDENDUM #3.**

22. Question: Are you stating you want an alternate price to provide the branch lines that would serve the tenant build out space off the mains that Schambaugh will have provided, thereby foregoing the need for Schambaugh to provide upright protection to your white shell, prior to the build out?

Answer: It has been decided that Shambaugh, the base building subcontractor, will supply a 3" main stubbed off at the demising wall. The Health Clinic contractor is responsible for installing a complete fire suppression system connected to that 3" main.

IMPORTANT- This is an addendum which MUST be acknowledged on your bid form

We will require two copies each of your lump sum proposals, vendor qualification questionnaire and your bid bond documents.

All questions concerning this project must be emailed to: **Robert Kuhn**, Procurement & Strategic Sourcing. Email: **ac6243@wayne.edu**, and copy **Leiann Day**, **Associate Director of Procurement**, at **leiann.day@wayne.edu**.

Do not contact either FP&M or the Design Firm directly as this may result in disqualification of your proposal.

Thank you for interest shown in working with Wayne State University.

Robert Kuhn
Sr. Buyer

CC: **Fran Ahern, Allen Gigliotti** (Project Manager), **Leiann Day**, **Associate Director of Procurement**, Attendee list.



iDesign – Addendum No . 5

To: All Bidders

CC: T. Allen Gigliotti
Wayne State University
Design & Construction Services
5454 Cass Avenue
Detroit, Mi 48202
allen.g@wayne.edu
Phone: 313-577-7658

From: Rosanna Brueckner
iDesign Solutions, LLC
1042 N Milford Rd.
Milford, Mi 48381
Email: rbrueckner@iDesign-solutions.info
Phone: 248-440-7310 ext. 7

Addendum Number: # 5

Project: WSU Campus Health Center
Location : 5235 Anthony Wayne Drive, Detroit, Mi
Project #: 122-293203 iDesign #1156-9
Date: 01-26-18

This addendum forms part of and modifies the Construction Bid Documents dated 12-14-2017. The following revisions shall be incorporated and shall take precedence over any conflicting part of the original construction bid documents. Bidder shall acknowledge receipt in the addendum as per the bidding instructions. NOTE: Nothing in this Addendum should affect pricing.

Item 1. Architectural Addendum

Sheet #A4-01, Finish Schedule and Details

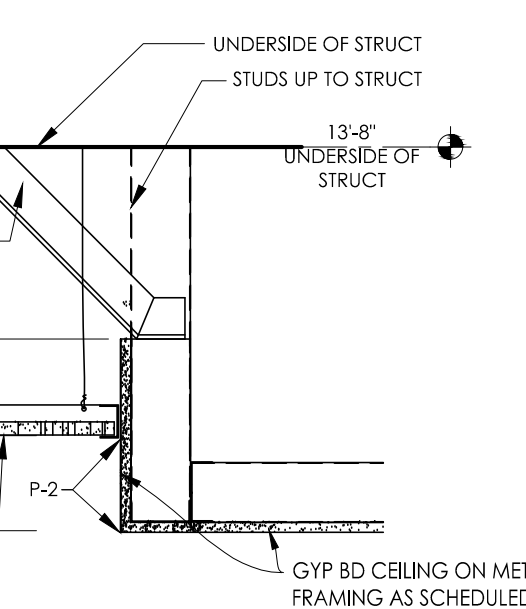
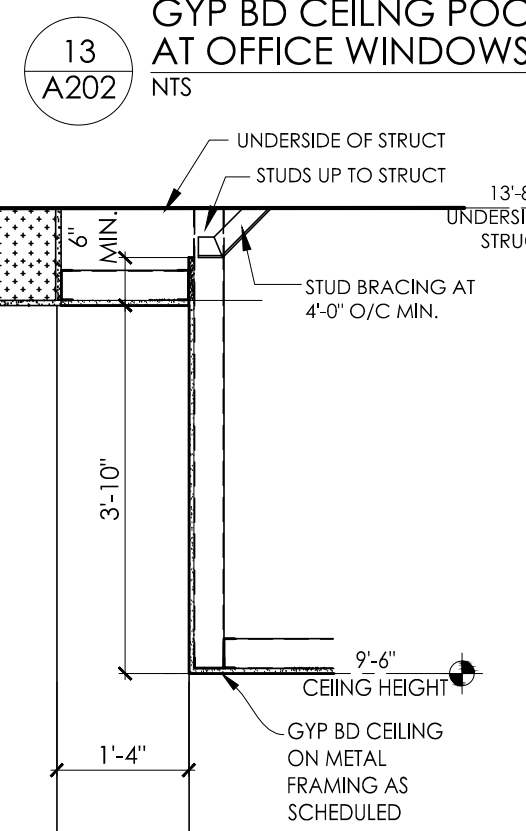
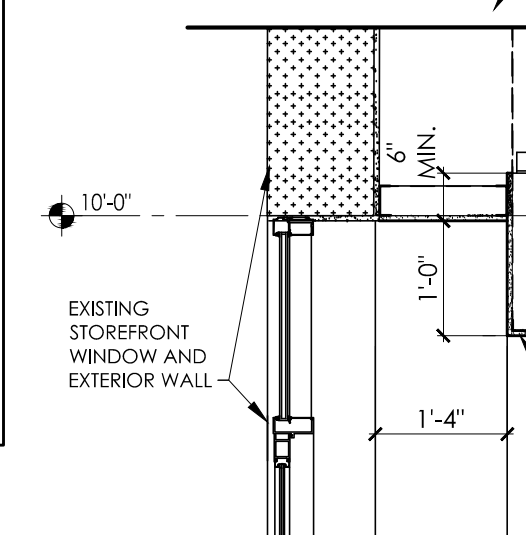
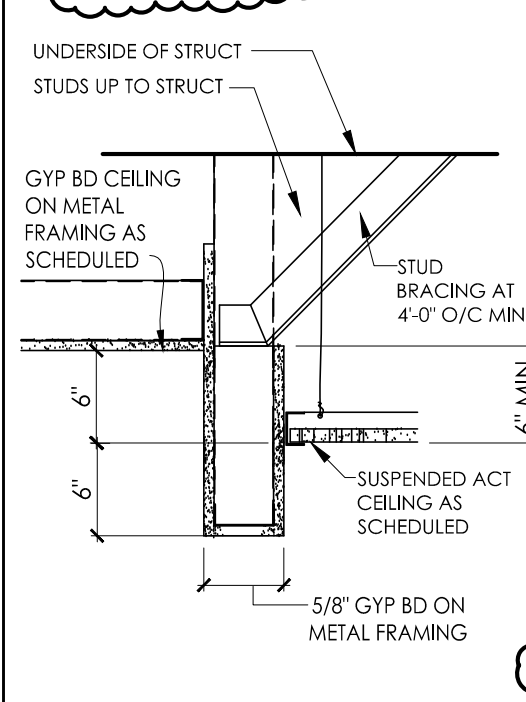
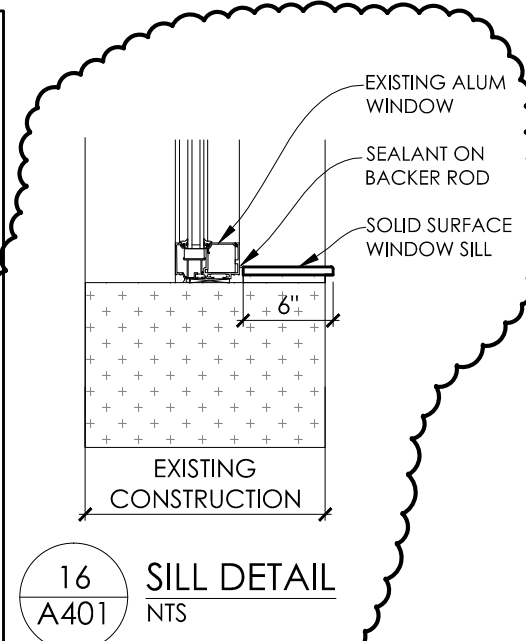
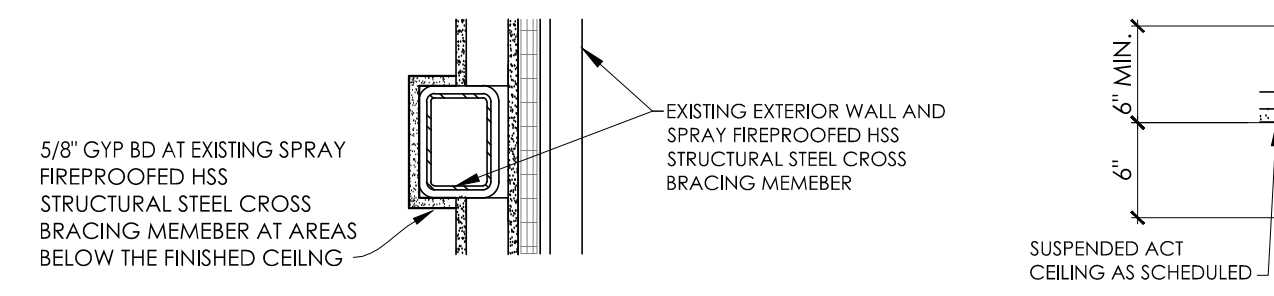
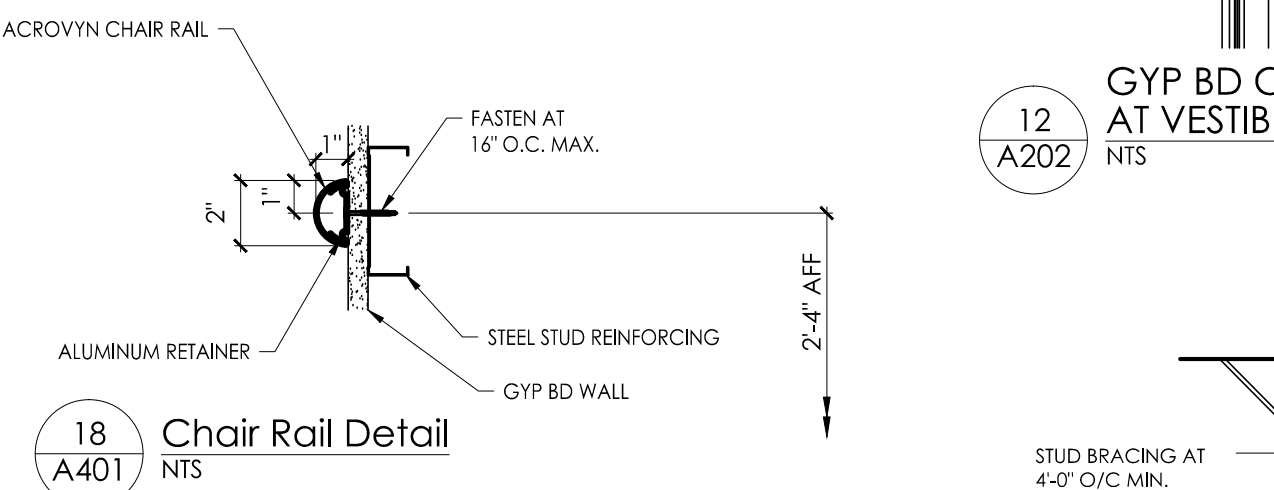
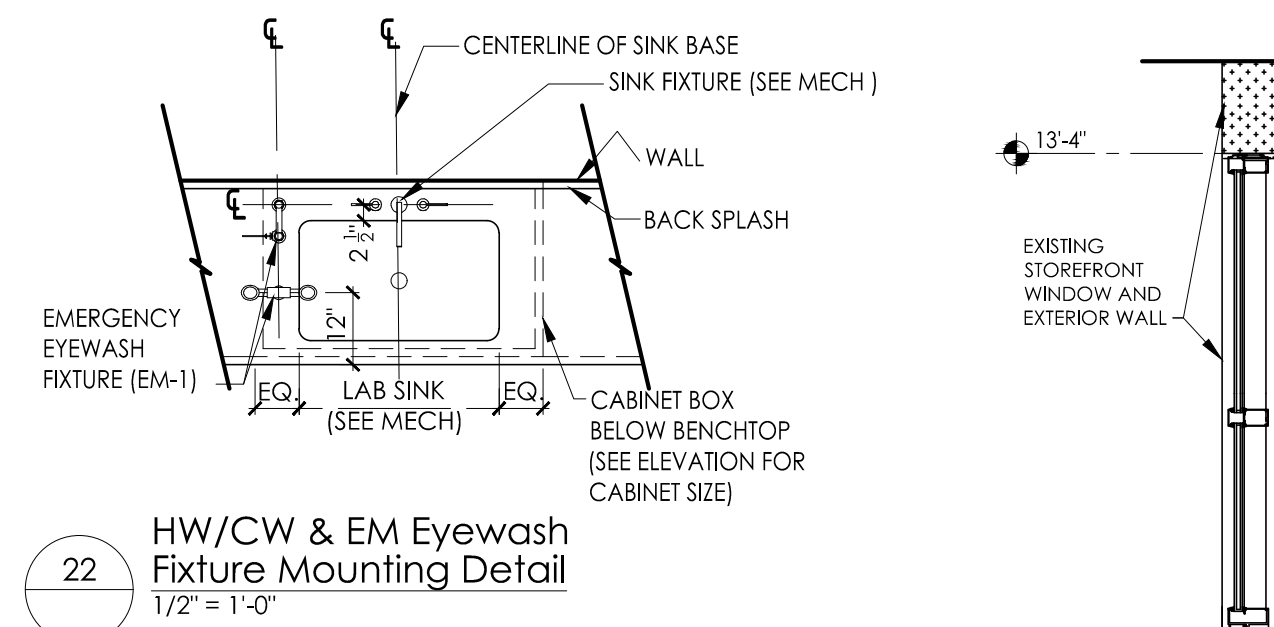
Description: Added detail 16/A4-01 at exterior window sill.

TYPICAL ABBREVIATIONS

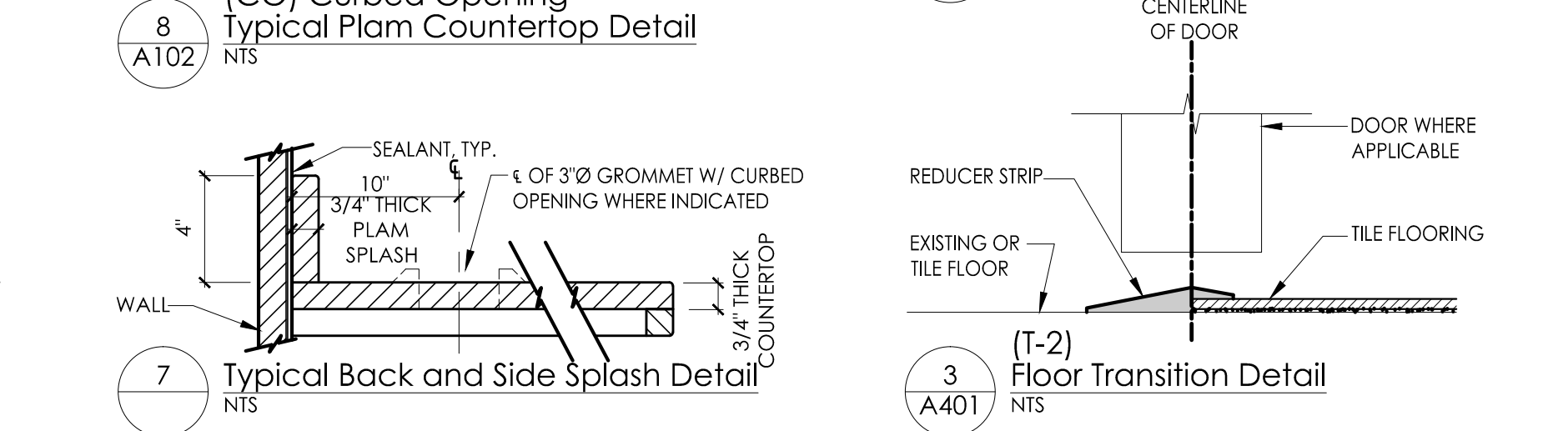
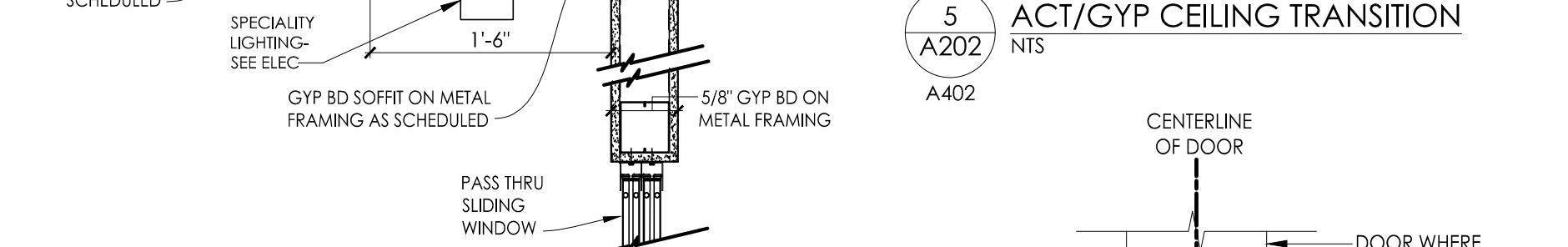
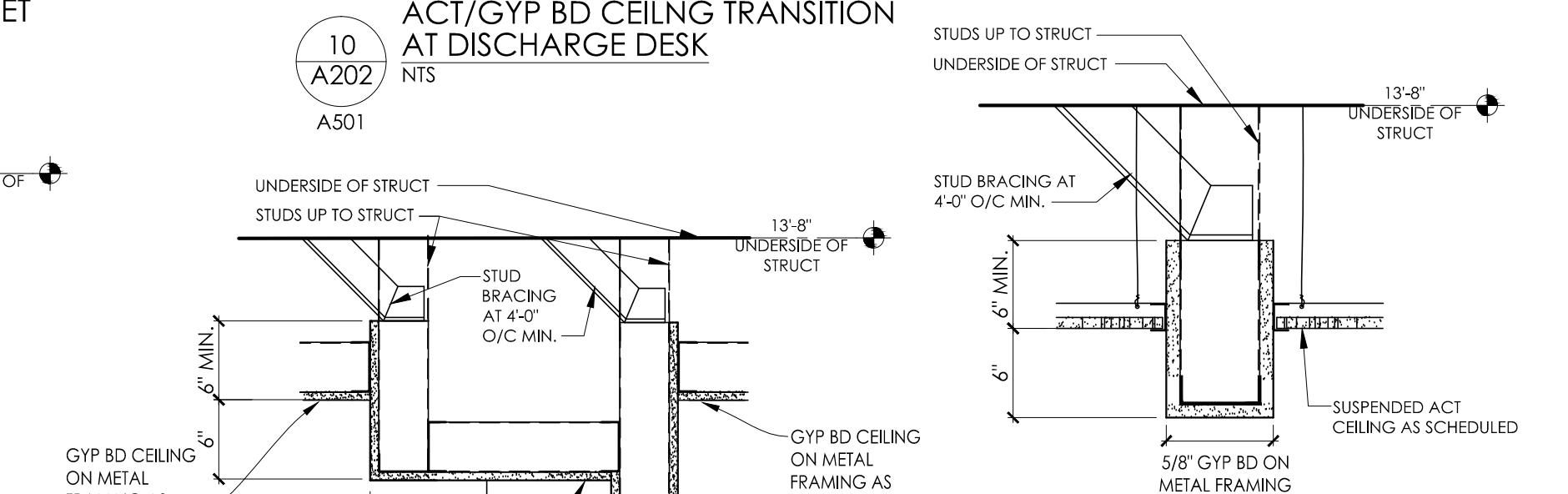
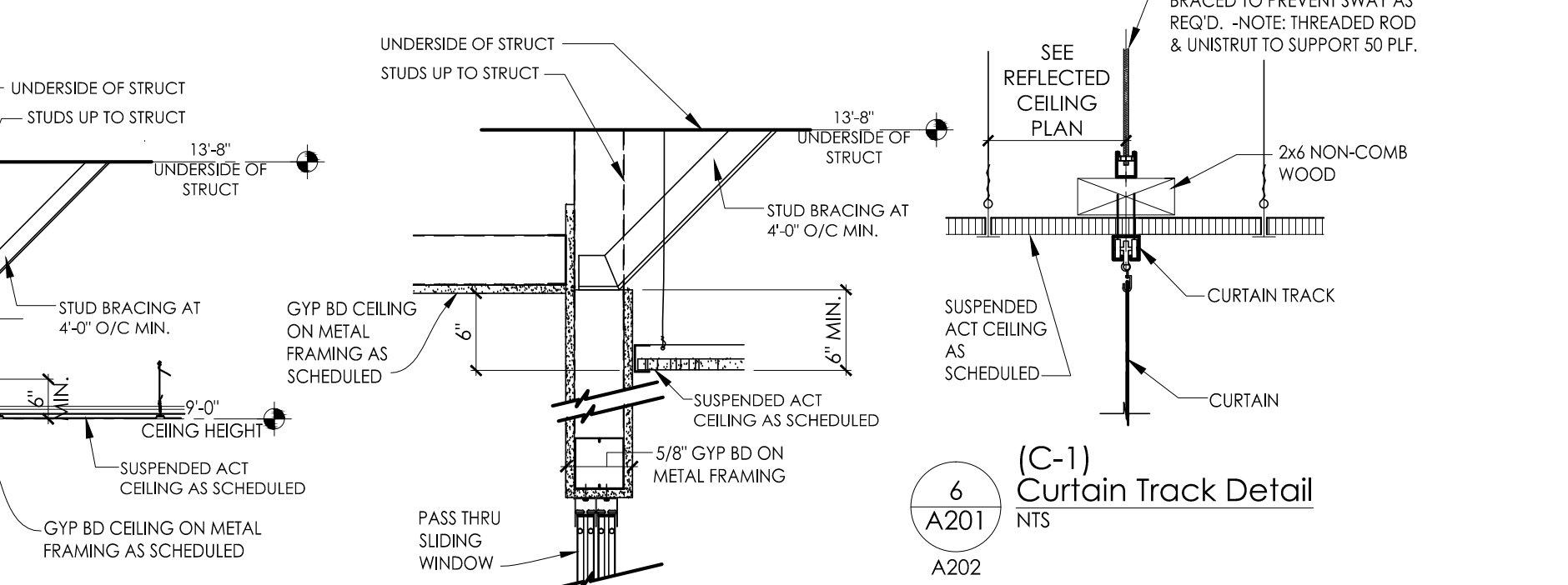
A	AIR (15 PSI)	LS	LAB SINK
Ar	ARGON GAS	MD	MICRO DYNAMICS
AFM	ATOMIC FORCE MICROSCOPE	MM	MONITOR MOUNT/ or MATERIALS MECHANIC
ALS	ALCOVE	MTIC	MECHANICAL TESTING CORE
ALS	ADJUSTABLE SHELVES	MRL	MAIN RESEARCH LAB
AT	AIR TABLE	MT	MOVEABLE TABLE
ADJ	ADJUSTABLE	MW	MODULAR WALL
BSC	BIO- SAFETY CABINET	N2	NITROGEN
CA	COMPRESSED AIR (100 PSI) or COMPUTER ACCESSORY	NIC	NOT IN CONTRACT
		NTS	NOT TO SCALE
CAB	CABINET	OC	ON CENTER
CC	GAS CYLINDER CABINET	O.F.C.I.	OWNER FURNISHED/CONTRACTOR INSTALLED
CH	CANOPY HOOD	O.F.O.I.	OWNER FURNISHED/OWNER INSTALLED
C.F.C.I.	CONTRACTOR FURNISHED/CONTRACTOR INSTALLED	OH	OPPOSITE HAND
CHWR	CHILLED WATER RETURN	OSH	OVERHEAD SERVICE CARRIER
CHWS	CHILLED WATER SUPPLY	OT	OPTICS TABLE
CL	CENTER LINE	OTOS	OPTICS TABLE OVERHEAD SHELF
CO2	CARBON DIOXIDE	OSS	OVERHEAD SHELVING SYSTEM
COL	COLUMN	O2	OXYGEN
CR	CARD READER/ or CYLINDER RESTRAINT	P	PHENOLIC RESIN
CS	CUPSINK	Pair	PURIFIED AIR
CSP	CEILING SERVICE PANEL	PE	PEGBOARD
CW	COLD WATER	PART	PARTIAL
CYL	CYLINDER	PBCV	PARTIAL BYPASS CONSTANT VOLUME
C2H2	ACETYLENE	PC	PERSONAL COMPUTER
C2H4	ETHYLENE	PE	POINT EXHAUST
CH4	METHANE	PL	PROCEDURE LIGHT
CV	CONSTANT VOLUME	PLAM	PLASTIC LAMINATE (CHEMICAL RESISTANT)
D	DATA OUTLET/ or DEPTH	PROC	PROCEDURE
DI	DEIONIZED WATER	PSI	POUNDS PER SQUARE INCH
DIA	DIAMETER	PWR	POWER
DH	DRENCH HOSE	RFVBRW	REDUCED FACE VELOCITY- RESTRICTED BYPASS
DMB	DRY MARKER BOARD	RFVCV	VARIABLE VOLUME
DR	DISTILLATION RACK (INSIDE FUMEHOOD)/ or DOOR	REF	REDUCED FACE VELOCITY- CONSTANT VOLUME
E	EPOXY RESIN	RGW	REFRIGERATOR
EC	EXHAUST CONNECTION	RG	REAGENT GRADE WATER
EL	ELEVATION	RG	REAGENT GRADE
EN	ENTRY	RM	ROOM
EO	EQUIPMENT OPENING	RS	REVERSE OSMOSIS WATER
EP	ELECTRICAL PANEL	RO	STANDY POWER
ER	ENVIRONMENTAL ROOM	S	SERVICE CHASE
ES	EMERGENCY SHOWER STATION	SS	SCULLERY SINK
EMS	EMERGENCY STATION; COMBINATION EYEWASH & SHOWER	SF	SINK FUTURE/ or SERVICE FITTING
ESG	ELECTRIC STEAM GENERATOR	SF6	SULFUR HEXAFLUORIDE
EW	EYEWASH	SG	SPECIAL GAS
EXH	EXHAUST	SIM	SIMILAR
EXIST	EXISTING	SK	SINK
F	FILLER	SP	SPRAYER
FD	FLOOR DRAIN	STSL	STAINLESS STEEL
FE	FIRE EXTINGUISHER	ST	STERILIZER
FED	FUME EXTRACTOR DEVICE	SVC	SERVICE CABINET
FH	FUMEHOOD	T	TELEPHONE OUTLET/ or THIMBLE CONNECTION FOR BSC
FLAM	FLAMMABLE	TC	TALL CABINET/ or TISSUE CULTURE TABLE SYSTEM/ or TALL SHELVING
FRZ	FREEZER	TS	TYPICAL
G	NATURAL GAS	TW	TEMPERED WATER
GFI	GROUND FAULT INTERRUPTER	UC	UNDER COUNTER
GR	GROMMET	UCR	UNDER COUNTER REFRIGERATOR
GWD	GLASS WASHER/DRYER	UCW	UNDER COUNTER WASHER
H2	HYDROGEN	ULV	ULTRA LOW VIBRATION
HB	HOSE BIB	UON	UNLESS OTHERWISE NOTED
He	HELIUM GAS	US	UNISTRUT SUPPORT SERVICE CARRIER
HRS	HOSE REEL STATION	V	VOLTAGE OR VACUUM
HW	HOT WATER	VAC	VACUUM
HWS	HAND WASH SINK	VAC	VACUUM
ICE	ICE FLAKER	VDC	VOICE DATA OUTLET
INC	INCUBATOR	WC	WALL CABINET
IS	ILLUMINATED SIGN	WD	WALL DRAIN
KO	KNEE OPENING	WFH	WALK-IN FUME HOOD
L	LOCK	WIRE	WIRE SHELVING
LA	LAB AIR (15 PSI)	WPH	WALL-MOUNTED EMERGENCY PHONE
LC	LAB COAT RACK	WW	WIRE WAY
LN	LIQUID NITROGEN		

EMERGENCY SAFETY EQUIPMENT FIXTURES SCHEDULE

ID	SYMBOL	DESCRIPTION	SPECIFICATION
EM-1		EMERGENCY EYE WASH & DRENCH HOSE, DECK MOUNTED (@ SINK)	WATERSAVER EW1028VB



KEY	MATERIAL	MANUFACTURER, STYLE AND COLOR
C-1	CURTAIN	HEALTHCARE CURTAINS, 11'-0" WIDE, STYLE: VEGAS, COLOR: DUNE, SEE FINISH PLAN SHEETS A3-01 AND A3-02 FOR LOCATIONS
CPT-1	CARPET	TANDUS FLOORING, 24'X24" TILE, QUARTER TURN INSTALL, STYLE: STREET LIFE 03973, COLOR: PIER 40 36107
CR-1	CHAIR RAIL	ACROVYN, STYLE: FR-270N AND COLOR: 378 BRUSHED NICKEL, SEE FINISH SCHEDULE FOR LOCATION, SEE DETAIL 18/A4-01
CT-1	CERAMIC TILE	FLORIDA TILE, 12'X24" TILE, 1/2 BRICK OFFSET INSTALL, STYLE: RHYME, COLOR: SILVER MELODY
CT-2	CERAMIC TILE	FLORIDA TILE, ALTO MOSAIC WALL TILE, STYLE: RHYME, COLOR: ROMAN
RT-1	RUBBER TILE	NORA, STYLE: NORAPLAN LONA, COLOR: 4913
RT-1	PORCELAIN TILE	AEQUA, 8'X32" TILE, 1/3 BRICK OFFSET INSTALL, STYLE: CIRRUS, COLOR: GREY
B-1	RESILIENT BASE	BASE THROUGHOUT, AROUND ALL FIXED MILLWORK. (4" RESILIENT COVE), JOHNSONITE COLOR: 23 VAPOR GREY
B-2	PORCELAIN TILE	AEQUA, 8'X32" TILE, STYLE: CIRRUS, COLOR: GREY
B-3	CERAMIC TILE	FLORIDA TILE, 12'X24" TILE, STYLE: RHYME, COLOR: SILVER MELODY
P-1	PAINT	SHERWIN WILLIAMS COLOR: RICE PADDY SW 4414 FINISH: LATEX EGGSHELL FOR ALL ROOMS EXCEPT TOILET ROOMS TO BE LATEX SEMI-GLOSS
P-2	PAINT	SHERWIN WILLIAMS COLOR: HEARTS OF PALM SW 4415 FINISH: LATEX EGGSHELL FOR ALL ROOMS EXCEPT TOILET ROOMS TO BE LATEX SEMI-GLOSS SEE FINISH PLAN SHEETS A3-01 AND A3-02, INTERIOR ELEVATION SHEET A5-02 & REFLECTED CEILING PLAN SHEET A2-02 FOR LOCATIONS
P-3	PAINT	ALL GYP BD CEILINGS, COLOR: BENJAMIN MOORE, WINTER WHITE, FINISH: LATEX FLAT
P-4	PAINT	PAINT HM DOORS & FRAMES, COLOR: BENJAMIN MOORE, MOONSHINE, FINISH: ENAMEL OIL SATIN
ACT-1	ACOUSTIC CEILING TILE	ACOUSTIC CEILING TILE THROUGHOUT. (COLOR: WHITE, SIZE: 2'X2'X3/4")
ACT-2	ACOUSTIC CEILING TILE	NOISE REDUCTION ACOUSTIC CEILING TILE. (COLOR: WHITE, SIZE: 2'X2'X3/4")
ACG-1	ACOUSTIC CEILING GRID	CEILING GRID THROUGHOUT. (COLOR: WHITE, SIZE: 5/16")
SH-1	WINDOW SHADE	DRAPER, BOTTOM UP FLEX SHADES, STYLE: GREENSCREEN EVOLVE COLOR: WIND, 5% OPENNESS SEE FINISH PLAN SHEETS A3-01 AND A3-02 AND FINISH SCHEDULE FOR LOCATIONS
SH-2	WINDOW SHADE	DRAPER, FIXED FRAME BLACK OUT SHADES, MERMET FLOCKE COLOR: 06.08 SAHEL 0% OPENNESS SEE FINISH PLAN SHEETS A3-01 AND A3-02 AND FINISH SCHEDULE FOR LOCATIONS
WS-1	WINDOW SILL	CORIAN, STYLE/COLOR: CARRIBEAN SEE FINISH PLAN SHEETS A3-01 AND A3-02 FOR LOCATIONS, SEE 16/A4-01 FOR DETAIL
RAP-1	RESIN ACCENT PANEL	LUMICOR, STYLE/COLOR: NATURALS COASTAL FINISH: MATTE DECOR DIRECTION: VERTICAL NO FADE 3/4"X1/2" STANDOFF SUPPORT SEE FINISH PLAN SHEETS A3-01 AND A3-02, INTERIOR ELEVATION SHEET A5-02 AND FINISH SCHEDULE FOR LOCATIONS
FM-1	ENTRY MAT	8'-0" X 4'-0" CARPET TYPE MAT SEE FINISH PLAN SHEETS A3-02 AND FINISH SCHEDULE FOR LOCATION



ARCHITECTURAL FINISH SCHEDULE													
RM NO.	ROOM NAME	FLOOR		BASE		WALL		ACCENT WALL		CEILING		REMARKS	
		MAT.	FINISH	MAT.	FINISH	MAT.	FINISH	MAT.	FINISH	MAT.	FINISH		HEIGHT
1100	VESTIBULE	P. TILE	PT-1	P. TILE	B-2	GYP BD	PAINT (P-1)	GYP BD	-	GYP BD	PAINT (P-3)	9'-6"	EM-1, SH-1, T-1 SEE 4/A401
1101	WAITING ROOM	CARPET	CPT-1	RESIL	B-1	GYP BD	PAINT (P-1)	GYP BD	PAINT (P-2)	GYP BD	PAINT (P-3)	9'-0"	CR-1, SH-1, T-1 SEE 4/A401
1102	RECEPTION DESK	CARPET	CPT-1	RESIL	B-1	GYP BD	PAINT (P-1)	GYP BD	PAINT (P-2)	GYP BD	PAINT (P-3)	9'-6"	RAP-1
1103	DISCHARGE DESK	CARPET	CPT-1	RESIL	B-1	GYP BD	PAINT (P-1)	GYP BD	PAINT (P-2)	GYP BD	PAINT (P-3)	9'-6"	T-1 SEE 4/A401
1104	PATIENT INTERVIEW	RT	RT-1	RESIL	B-1	GYP BD	PAINT (P-1)	GYP BD	PAINT (P-2)	ACT	ACT-2/ACG-1	9'-0"	SH-2, T-1 SEE 4/A401
1105	CORRIDOR	RT	RT-1	RESIL	B-1	GYP BD	PAINT (P-1)	GYP BD	-	ACT	ACT-1/ACG-1	9'-0"	
1106	MEDICAL ASSISTANT	RT	RT-1	RESIL	B-1	GYP BD	PAINT (P-1)	GYP BD	PAINT (P-2)	ACT	ACT-2/ACG-1	9'-0"	
1107	EXAM	RT	RT-1	RESIL	B-1	GYP BD	PAINT (P-1)	GYP BD	PAINT (P-2)	ACT	ACT-2/ACG-1	9'-0"	SH-2
1108	EXAM	RT	RT-1	RESIL	B-1	GYP BD	PAINT (P-1)	GYP BD	PAINT (P-2)	ACT	ACT-2/ACG-1	9'-0"	SH-2
1109	CORRIDOR	RT	RT-1	RESIL	B-1	GYP BD	PAINT (P-1)	GYP BD	-	ACT	ACT-1/ACG-1	9'-0"	
1110	NURSE STATION	RT	RT-1	RESIL	B-1	GYP BD	PAINT (P-1)	GYP BD	PAINT (P-2)	ACT	ACT-1/ACG-1	9'-0"	RAP-1
1111	EXAM	RT	RT-1	RESIL	B-1	GYP BD	PAINT (P-1)	GYP BD	PAINT (P-2)	ACT	ACT-2/ACG-1	9'-0"	SH-2
1112	HUDDLE/CONSULT	RT	RT-1	RESIL	B-1	GYP BD	PAINT (P-1)	GYP BD	PAINT (P-2)	ACT	ACT-2/ACG-1	9'-0"	
1113	EXAM	RT	RT-1	RESIL	B-1	GYP BD	PAINT (P-1)	GYP BD	PAINT (P-2)	ACT	ACT-2/ACG-1	9'-0"	SH-2
1114	CORRIDOR	RT	RT-1	RESIL	B-1	GYP BD	PAINT (P-1)	GYP BD	-	ACT	ACT-1/ACG-1	9'-0"	
1115	EXAM	RT	RT-1	RESIL	B-1	GYP BD	PAINT (P-1)	GYP BD	PAINT (P-2)	ACT	ACT-2/ACG-1	9'-0"	SH-2
1116	EXAM	RT	RT-1	RESIL	B-1	GYP BD	PAINT (P-1)	GYP BD	PAINT (P-2)	ACT	ACT-2/ACG-1	9'-0"	
1117	BF PATIENT TOILET RM	CT	CT-1	CT	B-3	GYP BD	PAINT (P-1)	GYP BD	PAINT (P-2)	GYP BD	PAINT (P-3)	9'-0"	T-2 SEE 3/A401
1118	CORRIDOR	RT	RT-1	RESIL	B-1	GYP BD	PAINT (P-1)	GYP BD	-	ACT	ACT-1/ACG-1	9'-0"	
1119	DIRTY LAB	RT	RT-1	RESIL	B-1	GYP BD	PAINT (P-1)	GYP BD	-	ACT	ACT-1/ACG-1	9'-0"	
1120	BF PATIENT TOILET RM	CT	CT-1	CT	B-3	GYP BD	PAINT (P-1)	GYP BD	PAINT (P-2)	GYP BD	PAINT (P-3)	9'-0"	T-2 SEE 3/A401
1121	JANITOR CLOSET	RT	RT-1	RESIL	B-1	GYP BD	PAINT (P-1)	GYP BD	-	GYP BD	PAINT (P-3)	9'-0"	
1122	OUTREACH STORAGE	CARPET	CPT-1	RESIL	B-1	GYP BD	PAINT (P-1)	GYP BD	PAINT (P-2)	ACT	ACT-1/ACG-1	9'-0"	SH-1, T-1 SEE 4/A401
1123	DELIVERIES CORRIDOR	RT	RT-1	RESIL	B-1	GYP BD	PAINT (P-1)	GYP BD	-	ACT	ACT-1/ACG-1	9'-0"	
1124	SM OFFICE	CARPET	CPT-1	RESIL	B-1	GYP BD	PAINT (P-1)	GYP BD	PAINT (P-2)	ACT	ACT-2/ACG-1	9'-0"	SH-1
1125	MANAGER OFFICE	CARPET	CPT-1	RESIL	B-1	GYP BD	PAINT (P-1)	GYP BD	PAINT (P-2)	ACT	ACT-2/ACG-1	9'-0"	T-1 SEE 4/A401
1126	CLEAN LAB	RT	RT-1	RESIL	B-1	GYP BD	PAINT (P-1)	GYP BD	-	ACT	ACT-1/ACG-1	9'-0"	SH-2
1127	EXAM	RT	RT-1	RESIL	B-1	GYP BD	PAINT (P-1)	GYP BD	PAINT (P-2)	ACT	ACT-2/ACG-1	9'-0"	
1128	EXAM	RT	RT-1	RESIL	B-1	GYP BD	PAINT (P-1)	GYP BD	PAINT (P-2)	ACT	ACT-2/ACG-1	9'-0"	
1129	CORRIDOR	RT	RT-1	RESIL	B-1	GYP BD	PAINT (P-1)	GYP BD	-	ACT	ACT-1/ACG-1	9'-0"	
1130	EXAM	RT	RT-1	RESIL	B-1	GYP BD	PAINT (P-1)	GYP BD	PAINT (P-2)	ACT	ACT-2/ACG-1	9'-0"	SH-2
1131	EXAM	RT	RT-1	RESIL	B-1	GYP BD	PAINT (P-1)	GYP BD	PAINT (P-2)	ACT	ACT-2/ACG-1	9'-0"	
1132	LG OFFICE	CARPET	CPT-1	RESIL	B-1	GYP BD	PAINT (P-1)	GYP BD	PAINT (P-2)	ACT	ACT-2/ACG-1	9'-0"	SH-1
1133	LG OFFICE	CARPET	CPT-1	RESIL	B-1	GYP BD	PAINT (P-1)	GYP BD	PAINT (P-2)	ACT	ACT-2/ACG-1	9'-0"	SH-1
1134	LG OFFICE	CARPET	CPT-1	RESIL	B-1	GYP BD	PAINT (P-1)	GYP BD	PAINT (P-2)	ACT	ACT-2/ACG-1	9'-0"	SH-1
1135	CORRIDOR	CARPET	CPT-1	RESIL	B-1	GYP BD	PAINT (P-1)	GYP BD	-	ACT	ACT-1/ACG-1	9'-0"	T-2 SEE 3/A401
1136	LG OFFICE	CARPET	CPT-1	RESIL	B-1	GYP BD	PAINT (P-1)	GYP BD	PAINT (P-2)	ACT	ACT-2/ACG-1	9'-0"	SH-1
1137	LG OFFICE	CARPET	CPT-1	RESIL	B-1	GYP BD	PAINT (P-1)	GYP BD	PAINT (P-2)	ACT	ACT-2/ACG-1	9'-0"	SH-1
1138	WORKSTATION	CARPET	CPT-1	RESIL	B-1	GYP BD	PAINT (P-1)	GYP BD	PAINT (P-2)	ACT	ACT-1/ACG-1	9'-0"	
1139	IT	RT	RT-1	RESIL	B-1	GYP BD	PAINT (P-1)	GYP BD	-	GYP BD	PAINT (P-3)	9'-10"	T-1 SEE 4/A401
1140	ELEC	RT	RT-1	RESIL	B-1	GYP BD	PAINT (P-1)	GYP BD	-	THR GYP BD	PAINT (P-3)	9'-10"	T-1 SEE 4/A401
1141	MECH	RT	RT-1	RESIL	B-1	GYP BD	PAINT (P-1)	GYP BD	-	EXP	-	-	T-1 SEE 4/A401
1142	SM OFFICE	CARPET	CPT-1	RESIL	B-1	GYP BD	PAINT (P-1)	GYP BD	PAINT (P-2)	ACT	ACT-2/ACG-1	9'-0"	SH-1
1143	SM OFFICE	CARPET	CPT-1	RESIL	B-1	GYP BD	PAINT (P-1)	GYP BD	PAINT (P-2)	ACT	ACT-2/ACG-1	9'-0"	
1144	CORRIDOR	CARPET	CPT-1	RESIL	B-1	GYP BD	PAINT (P-1)	GYP BD	-	ACT	ACT-1/ACG-1	9'-0"	
1145	BF STAFF TOILET ROOM	CT	CT-1	CT	B-3	GYP BD	PAINT (P-1)	GYP BD	PAINT (P-2)	GYP BD	PAINT (P-3)	9'-0"	T-1 SEE 4/A401
1146	FILES/OFFICE STORAGE	CARPET	CPT-1	RESIL	B-1	GYP BD	PAINT (P-1)	GYP BD	PAINT (P-2)	ACT	ACT-2/ACG-1	9'-0"	
1147	CONFERENCE ROOM	CARPET	CPT-1	RESIL	B-1	GYP BD	PAINT (P-1)	GYP BD	PAINT (P-2)	ACT	ACT-2/ACG-1	9'-8" 9'-0"	
1148	SM OFFICE	CARPET	CPT-1	RESIL	B-1	GYP BD	PAINT (P-1)	GYP BD	PAINT (P-2)	ACT	ACT-2/ACG-1	9'-0"	SH-1
1149	SM OFFICE	CARPET	CPT-1	RESIL	B-1	GYP BD	PAINT (P-1)	GYP BD	PAINT (P-2)	ACT	ACT-2/ACG-1	9'-0"	SH-1
1150	CORRIDOR	CARPET	CPT-1	RESIL	B-1	GYP BD	PAINT (P-1)	GYP BD	-	ACT	ACT-1/ACG-1	9'-0"	
1151	SM OFFICE	CARPET	CPT-1	RESIL	B-1	GYP BD	PAINT (P-1)	GYP BD	PAINT (P-2)	ACT	ACT-2/ACG-1	9'-0"	SH-1
1152	BREAK ROOM	RT	RT-1	RESIL	B-1	GYP BD	PAINT (P-1)	GYP BD	PAINT (P-2)	ACT	ACT-2/ACG-1	9'-0"	SH-1

