

# MATTHAEI ACADEMIC RESOURCE CENTER RENOVATION

5101 John C Lodge Fwy,  
Detroit, MI 48202

## ARCHITECT

STUCKY VITALE ARCHITECTS  
27172 WOODWARD AVENUE  
ROYAL OAK, MICHIGAN 48067  
(248) 546-6700

## MECH/PLUMB/ELEC ENGINEER

MA ENGINEERING  
180 HIGH OAK RD  
BLOOMFIELD HILLS, MI 48304  
(248) 258-1610

### PROJECT INFORMATION

**WSU PROJECT NUMBER: 080-349977**

#### PROJECT DESCRIPTION

RENOVATION OF EXISTING ACADEMIC RESOURCE CENTER IN MATTHAEI BUILDING INTO STUDENT ATHLETE LOUNGE.

#### APPLICABLE CODES

2015 MICHIGAN REHABILITATION CODE FOR EXISTING BUILDINGS (MRC)  
2015 MICHIGAN MECHANICAL CODE (MMC)  
2015 MICHIGAN ENERGY CODE (MEC)  
2013 ANSI/ASHRAIES 90.1  
2011 NATIONAL ELECTRICAL CODE (NEC)  
2009 ICC A117.1  
2015 NFPA 101 LIFE SAFETY CODE

#### BARRIER FREE REQUIREMENTS:

2010 ADA STANDARDS FOR ACCESSIBLE DESIGN (DOJ)  
MBC-2009, CHAPTER 11  
ICC / ANSI 117.1 - 2006, EXCEPT SECTION 611 & 707

#### CHAPTER 3 - USE AND OCCUPANCY CLASSIFICATION

ORIGINAL MATTHAEI - EDUCATION: E  
2012 ADDITION - BUSINESS: B

### SHEET DESIGNATION

DRAWINGS ARE NUMBERED ACCORDING TO THE FOLLOWING CONVENTIONS:

A001

DISCIPLINE  
DESIGNATOR

G GENERAL  
LS LIFE SAFETY  
AD ARCHITECTURAL  
DEM DEMOLITION  
A ARCHITECTURAL  
P PLUMBING  
M MECHANICAL  
E ELECTRICAL

DRAWING SEQUENCE NUMBER

DRAWING TYPE DESIGNATOR

0 GENERAL, LEGENDS  
1 PLANS  
2 REFLECTED CEILING PLANS  
3 EXTERIOR ELEVATIONS  
4 SECTIONS  
5 VERTICAL CIRCULATION (PLANS & SECTIONS)  
6 ENLARGED PLANS AND INTERIOR ELEVATIONS  
7 INTERIOR AND MILLWORK DETAILS  
8 FREE SECTION  
9 DOOR AND WINDOW SCHEDULES AND DETAILS

SHEET INDEX - GENERAL			
DWG #	DRAWING NAME	ISSUED FOR	DATE
G001	COVER SHEET, GENERAL INFORMATION, DRAWING INDEX	BID / PERMIT	07.07.22
G002	STANDARD MOUNTING HEIGHTS, PARTITION TYPES AND DETAILS	BID / PERMIT	07.07.22
DRAWINGS: 2			

SHEET INDEX - LIFE SAFETY			
DWG #	DRAWING NAME	ISSUED FOR	DATE
LS110	CODE INFORMATION AND FLOOR LIFE SAFETY PLAN - EGRESS PLANS	BFS RESPONSE	08.29.22
DRAWINGS: 1			

SHEET INDEX - ARCHITECTURAL			
DWG #	DRAWING NAME	ISSUED FOR	DATE
AD100	ARCHITECTURAL DEMOLITION PLANS	BULLETIN #1	08.24.22
A110	FIRST LEVEL NEW CONSTRUCTION AND RCP	BFS RESPONSE	08.29.22
A610	INTERIOR ELEVATIONS AND ENLARGED PLANS FIRST LEVEL	BFS RESPONSE	08.29.22
DRAWINGS: 3			

SHEET INDEX - MECHANICAL			
DWG #	DRAWING NAME	ISSUED FOR	DATE
M000	MECHANICAL SYMBOLS LIST, INDEX,	BID / PERMIT	07.07.22
M100	DEMOLITION & NEW WORK	BID / PERMIT	07.07.22
DRAWINGS: 2			

SHEET INDEX - ELECTRICAL			
DWG #	DRAWING NAME	ISSUED FOR	DATE
E001	ELECTRICAL LEGEND, SHEET INDEX AND SPECIFICATION	BID / PERMIT	07.07.22
ED001	DEMOLITION PLANS	BID / PERMIT	07.07.22
E100	ELECTRICAL PLANS	BID / PERMIT	07.07.22
DRAWINGS: 3			

SHEET INDEX - FIRE PROTECTION			
DWG #	DRAWING NAME	ISSUED FOR	DATE
F100	FIRST LEVEL NEW WORK FIRE PROTECTION PLAN	BID / PERMIT	07.07.22
DRAWINGS: 1			

NOTE:  
THESE CONSTRUCTION DRAWINGS WERE PREPARED FOR COMPLIANCE WITH THE MICHIGAN CONSTRUCTION CODES IN EFFECT AT THE TIME OF PERMIT SUBMITTAL. ALL ENGINEERS, CONTRACTORS AND SUPPLIERS INVOLVED WITH THIS PROJECT SHALL COMPLY WITH THE SAME CODES. ISSUED AND APPROVED CODE MODIFICATIONS AND/OR CITY CODE AUTHORITY CONSTRUCTION BOARDS OF APPEALS RULINGS AND WHENEVER REQUIRED SHALL PROVIDE SHOP DRAWINGS AND SUBMITTALS CLEARLY DESCRIBING COMPLIANCE TO THE REGISTERED DESIGN PROFESSIONAL IN RESPONSIBLE CHARGE FOR REVIEW AND APPROVAL.

### MATERIAL LEGEND

#### HATCH PATTERNS

	EARTH
	SAND
	GRAVEL FILL
	CONCRETE
	MASONRY
	GROUT
	MORTAR
	STEEL
	STAINLESS STEEL
	RIGID INSULATION
	GYPSUM BOARD
	CEMENT BOARD

#### TYPICAL DETAIL SYMBOLS

	STEEL MEMBER
	SPRAY ON FIREPROOFING
	HARDWOOD
	PLYWOOD
	CONTINUOUS BLOCKING
	SHIM
	BATT INSULATION
	SEALANT WITH BACKER ROD

#### PARTITION PLAN DESIGNATIONS

	SMOKE SEPARATION
	1 HOUR FIRE SEPARATION
	2 HOUR FIRE SEPARATION
	3 HOUR FIRE SEPARATION
	METAL STUD PARTITION
	CMU PARTITION
	CONCRETE WALL

### SYMBOL LEGEND

	ENLARGED CALLOUT TAG
	INTERIOR ELEVATION TAG
	EXTERIOR ELEVATION TAG
	DETAIL NUMBER
	VIEW TITLE
	VIEW SCALE
	SHEET NUMBER

ROOM NAME	ROOM TAG
ROOM NAME	101

FLOOR NAME	LEVEL REFERENCE
ELEV. 100'-0"	

DATUM WORKPOINT
0.0

COLUMN GRIDS
NUMBERS DESIGNATE VERTICAL COLUMN LINES
LETTERS DESIGNATE HORIZONTAL COLUMN LINES
SQUARE DESIGNATE EXISTING COLUMN GRID

DOOR TAGS
NEW DOOR TAG DESIGNATION
EXISTING DOOR TAG DESIGNATION (ONLY IF EXISTING DOOR TO BE MODIFIED)

PARTITION TAG
2C3-Y6

KEYNOTE TAG
?

EQUIPMENT TAG
?

### ABBREVIATION LEGEND

&	AND
@	AT
CL	CENTERLINE
ACCESS.	ACCESSIBILITY
ACOUS.	ACOUSTICAL
ACT	ACOUSTICAL CEILING TILE
AD	AREA DRAIN
ADJ	ADJUSTABLE
AL	ALUMINUM
ASPH.	ASPHALT
BD.	BOARD
BLK.	BLOCKING
BR	BRICK
CAB.	CABINET
CEM.	CEMENT
CER.	CERAMIC
CFMF	COLD FORMED METAL FRAMING
C.J.	CONTROL JOINT
CLG	CEILING
CLKG.	CAULKING
CLR.	CLEAR
COL.	COLUMN
CONC.	CONCRETE
CONT.	CONTINUOUS
CORR.	CORRIDOR
OPT	CARPET
D.F.	DRINKING FOUNTAIN
DET.	DETAIL
DIA.	DIAMETER
DIM.	DIMENSION
DN.	DOWN
D.O.	DOOR OPENING
DR.	DOOR
DWR.	DRAWER
D.S.	DOWN SPOUT
DSP	DRY STAND PIPE
DWG.	DRAWING
EAC	EACH
E.J.	EXPANSION JOINT
EL	ELEVATION
ELEC.	ELECTRICAL
ELEV.	ELEVATOR
E.O.S./E.O.S.	EDGE OF SLAB
E.O.D./E.O.D.	EDGE OF DECK
EP	ELECTRICAL PANEL
EPX	EPOXY
EQ.	EQUAL
ECPM	EQUIPMENT
EXIST./EX	EXISTING
EXT.	EXTERIOR
FA	FIRE ALARM
FD	FLOOR DRAIN
FON	FOUNDATION
FE	FIRE EXTINGUISHER
FEC	FIRE EXTINGUISHER CABINET
FHC	FIRE HOSE CABINET
FIN	FINISH
FL	FLOOR
FPR	FIREPROOF
FRP	FIBERGLASS REINFORCED PANEL
F.S.	FULL SIZE
FT.	FOOT OR FEET
FTG.	FOOTING
FUR	FURRING
GA.	GAUGE
GALV.	GALVANIZED
GFRC.	GLASS FIBER REINFORCED CONCRETE
GL.	GLASS
GYP.	GYPSUM
H.B.	HOSE BIBB
H.C.	HOLLOW CORE
HDWE	HARDWARE
HM	HOLLOW METAL
HORIZ.	HORIZONTAL
INSUL	INSULATION
JC	JANITOR'S CLOSET
LT	LIGHT
LVT	LUXURY VINYL TILE
MAX	MAXIMUM
MECH	MECHANICAL
MTL	METAL
MFR.	MANUFACTURER
MIN.	MINIMUM
MISC.	MISCELLANEOUS
M.O.	MASONRY OPENING
NIC	NOT IN CONTRACT
NTS	NOT TO SCALE
O/C	ON CENTER
OFC	OFFICE
OPP	OPPOSITE
PL	PLATE
PLAM	PLASTIC LAMINATE
PNT	PAINT
PLYWD	PLYWOOD
RD	ROOF DRAIN
RCP	REFLECTED CEILING PLAN
RQD	REQUIRED
SC	SOLID CORE
SCHED	SCHEDULE
SIM	SIMILAR
SPEC	SPECIFICATIONS
SQ	SQUARE
S.S.	STAINLESS STEEL
SS	SOLID SURFACE
ST	STONE
STD	STANDARD
STL	STEEL
STOR	STORAGE
SUSP	SUSPENDED
SYM	SYMMETRICAL
TRD	TREAD
T.O.C.	TOP OF CURB
T&G	TONGUE AND GROOVE
THK	THICK
T.O.P.	TOP OF PARAPET
TA	TOILET ACCESSORY
TV	TELEVISION
T.O.W.	TOP OF WALL
T.O.S./T.O.S.	TOP OF STEEL
TYP.	TYPICAL
UN.O.	UNLESS NOTED OTHERWISE
VCT	VINYL COMPOSITION TILE
VERT.	VERTICAL
VEST	VESTIBULE
VF	VINYL FLOORING
W/	WITH
WB	WALL BASE
W.C.	WATER CLOSET
WC	WALLCOVERING
WD	WOOD
W/O	WITHOUT
WSCT.	WAINSCOT
WT.	WEIGHT

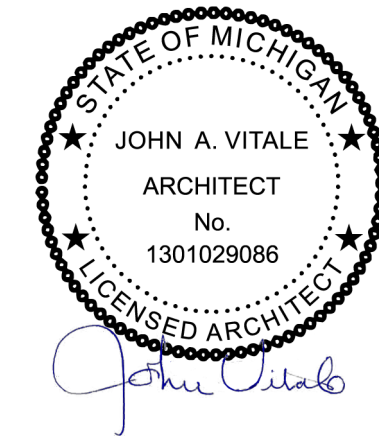


STUCKY VITALE ARCHITECTS  
27172 WOODWARD AVENUE  
ROYAL OAK, MI 48067-0925  
P. 248.546.6700  
F. 248.546.8454  
WWW.STUCKYVITALE.COM

STATEMENT OF INTELLECTUAL PROPERTY:  
THE IDEAS, CONCEPTS, DRAWINGS AND THOUGHTS CONVEYED HEREIN ARE THE INTELLECTUAL PROPERTY OF STUCKY VITALE ARCHITECTS. THIS SET OF DRAWINGS, IN WHOLE OR IN PART, MAY NOT BE REPRODUCED, WITHOUT THE WRITTEN CONSENT OF STUCKY VITALE ARCHITECTS. THIS INFORMATION IS PROTECTED UNDER U.S. COPYRIGHT LAW, ALL RIGHTS RESERVED.

Consultants

Seal:

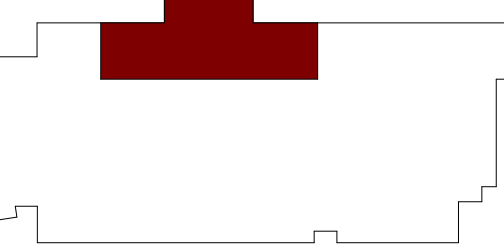
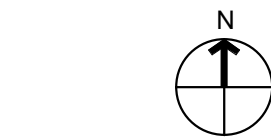


Project :

MATTHAEI ACADEMIC  
RESOURCE CENTER  
RENOVATION

5101 John C Lodge Fwy,  
Detroit, MI 48202

Key Plan:



Issued for

BID / PERMIT 07.07.22

Drawn by :

SVA

Checked by :

JAV, MJB, AJD

Sheet Title :

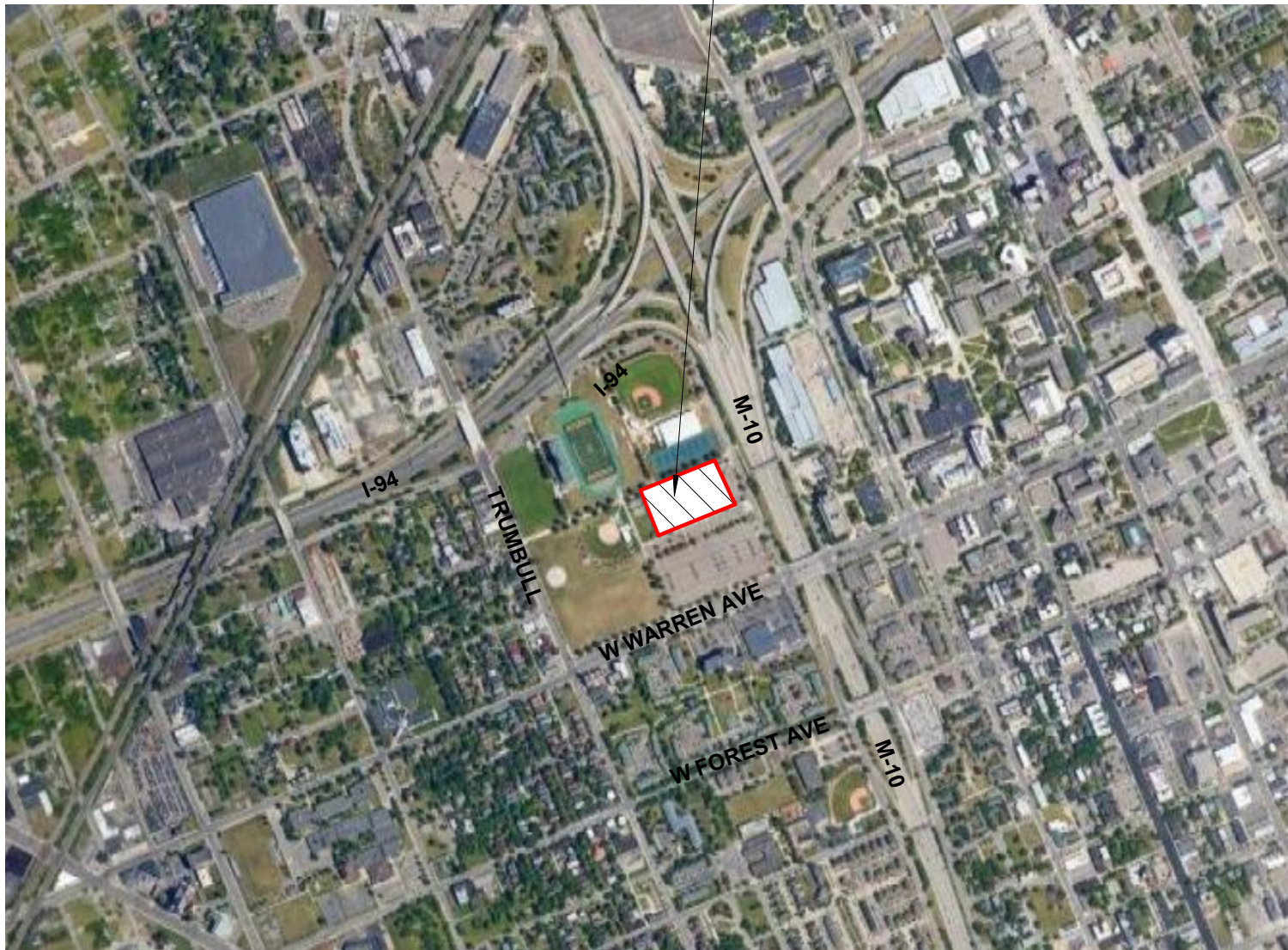
COVER SHEET, GENERAL  
INFORMATION, DRAWING  
INDEX

Project No. :

2022.038

Sheet No. :

G001



LOCATION MAP  
6" = 1'-0"



LIFE SAFETY SYMBOL LEGEND

EXIT TRAVEL DISTANCE

EXIT LIGHT (SHADING INDICATES LIGHTED FACE)

EXIT 01	COMPONENT NAME
0	MAXIMUM CALCULATED OCCUPANT CAPACITY
330	PROVIDED EGRESS WIDTH (INCHES)
66"	COMPONENT TYPE
0.2"	COMPONENT CAPACITY FACTOR
0"	CALCULATED EGRESS WIDTH
0"	OCCUPANT LOAD

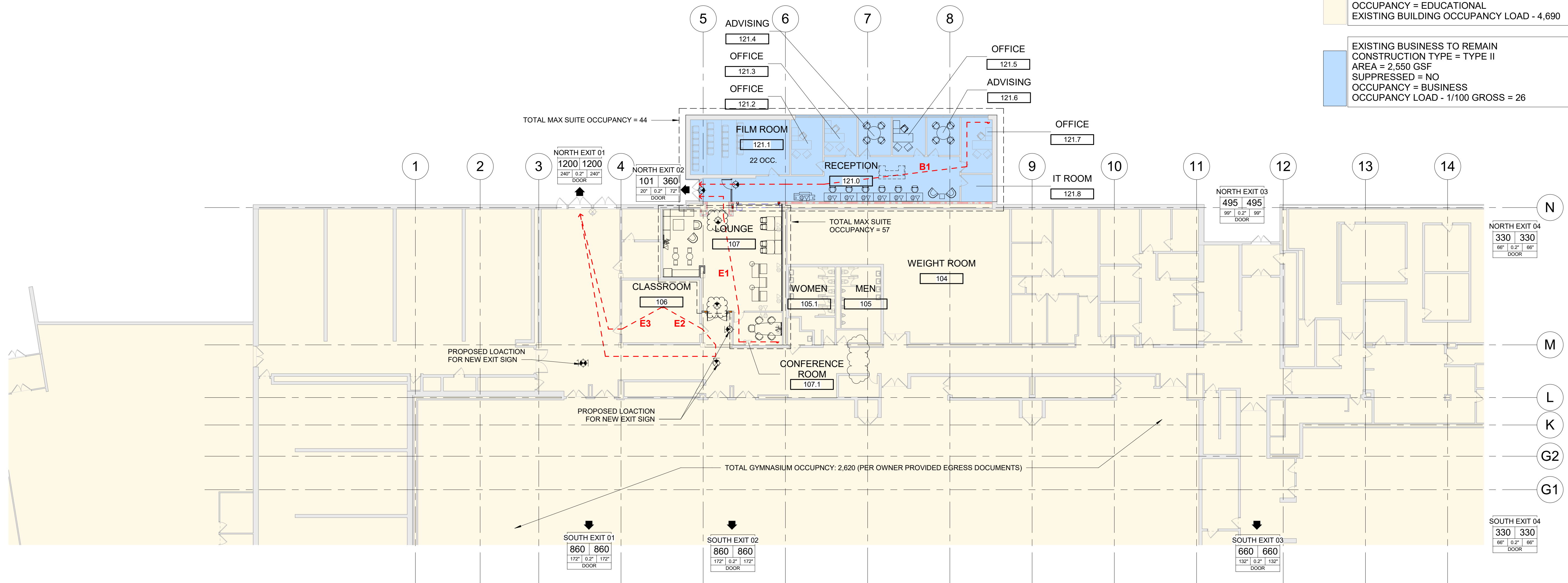
EGRESS TRAVEL DISTANCE SCHEDULE

Egress Path	Travel Distance
B1	101' - 8"
E1	63' - 8"
E2	101' - 0"
E3	54' - 3"

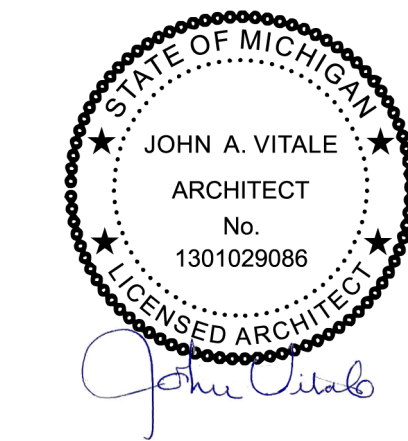
EXISTING EDUCATIONAL BUILDING OCCUPANT LOAD	= 4,690
EXISTING BUSINESS + EDUCATIONAL OCCUPANT LOAD	= 101
TOTAL FACILITY OCCUPANT LOAD	= 4,791
TOTAL OCCUPANT EGRESS CAPACITY PROVIDED	= 5,095

EXISTING EDUCATIONAL TO REMAIN  
CONSTRUCTION TYPE = TYPE II  
AREA = 108,500 SF  
SUPPRESSED = NO  
OCCUPANCY = EDUCATIONAL  
EXISTING BUILDING OCCUPANCY LOAD - 4,690

EXISTING BUSINESS TO REMAIN  
CONSTRUCTION TYPE = TYPE II  
AREA = 2,550 GSF  
SUPPRESSED = NO  
OCCUPANCY = BUSINESS  
OCCUPANCY LOAD - 1/100 GROSS = 26



Seal:

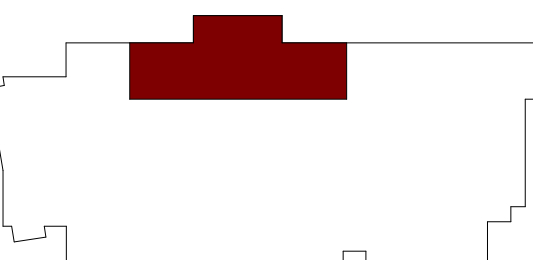


Project :

MATTHAEI ACADEMIC  
RESOURCE CENTER  
RENOVATION

5101 John C Lodge Fwy,  
Detroit, MI 48202

Key Plan:



Issued for

BID / PERMIT 07.07.22  
BFS RESPONSE 08.29.22

Drawn by :

Author

Checked by :

Checker

Sheet Title :

CODE INFORMATION AND  
FLOOR LIFE SAFETY PLAN -  
EGRESS PLANS

Project No. :

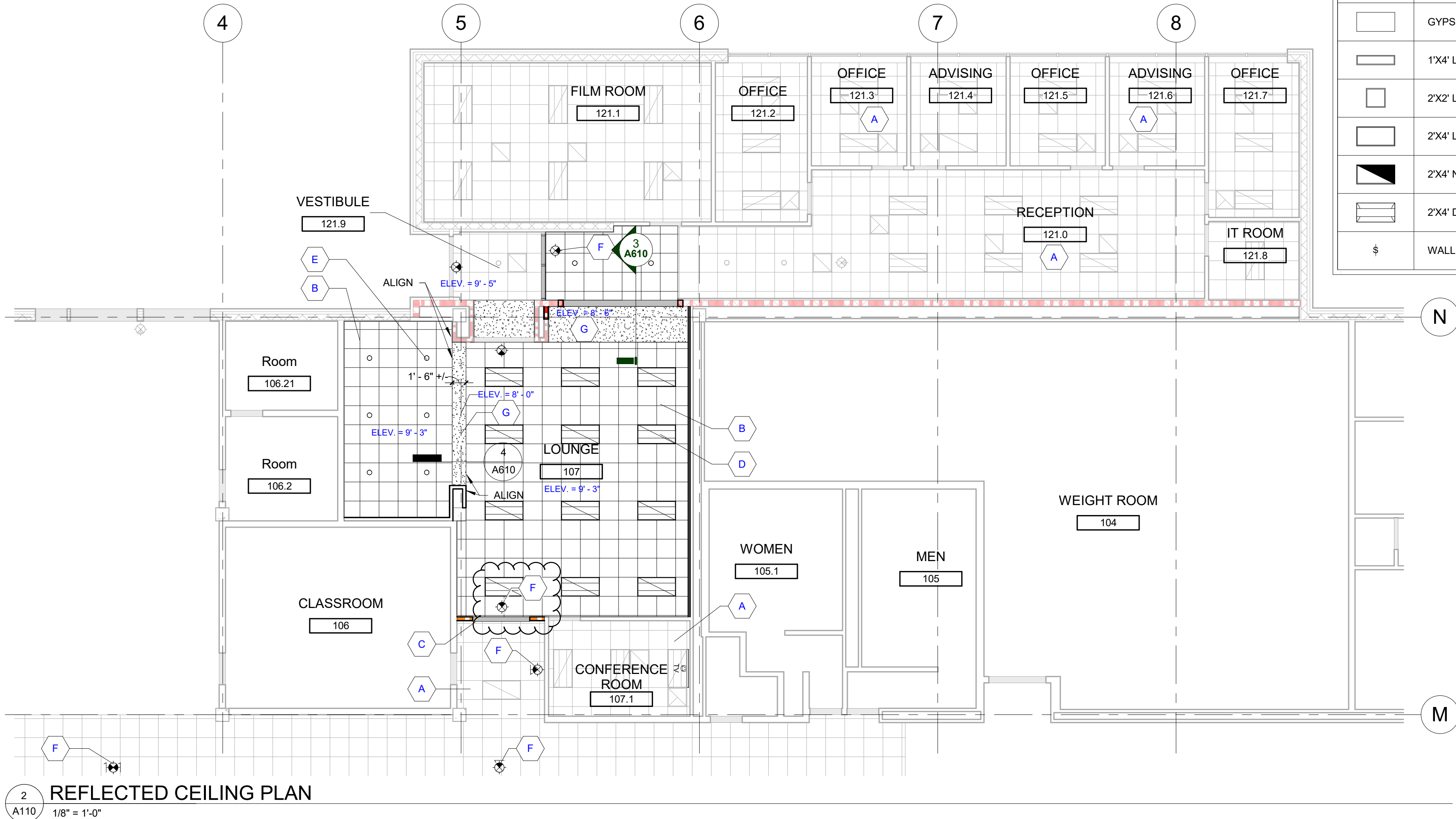
2022.038

Sheet No. :

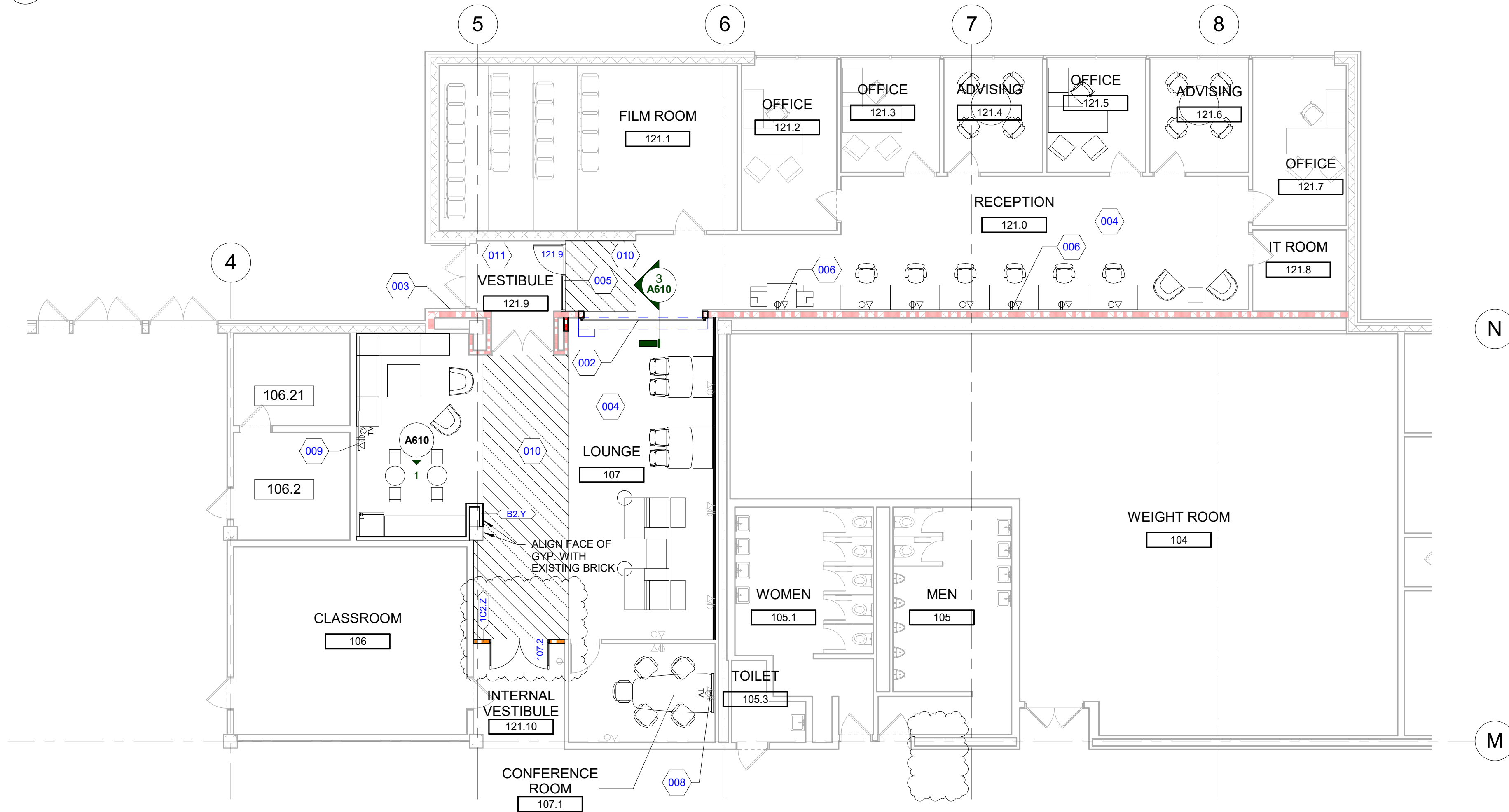
LS110

DO NOT SCALE DRAWINGS  
© 2022 Stucky Vitale Architects





2 REFLECTED CEILING PLAN  
A110 1/8" = 1'-0"



1 CONSTRUCTION PLAN  
A110 1/8" = 1'-0"

REFLECTED CEILING LEGEND					
SYMBOL	DESCRIPTION	SYMBOL	DESCRIPTION	SYMBOL	DESCRIPTION
	ACOUSTIC CEILING TILE SYSTEM PER SCHEDULE AND/OR SPECIFICATIONS		RECESSED DOWNLIGHT FIXTURE		RETURN AIR GRILL
	GYPSUM BOARD CEILING AND/OR SOFFIT		WALL WASHING LIGHT FIXTURE		EXHAUST AIR GRILL
	1'X4' LIGHT FIXTURE		WALL SCONCE FIXTURE		SMOKE DETECTOR
	2'X2' LIGHT FIXTURE		UNDER CABINET LIGHT FIXTURE		FIRE SUPPRESSION HEAD
	2'X4' LIGHT FIXTURE		EMERGENCY LIGHT FIXTURE W/ BATTERY SUPPLY		SPEAKER
	2'X4' NIGHT LIGHT FIXTURE		EXIT LIGHT (SHADING INDICATES LIGHTED FACE)		ELEVATION ABOVE FINISHED FLOOR
	2'X4' DIRECT/INDIRECT LIGHT FIXTURE		ACCESS PANEL - COORDINATE FINAL LOCATION WITH MEP		EXISTING FIXTURE TO REMAIN
	WALL SWITCH		SUPPLY AIR DIFFUSER		EXISTING FIXTURE TO BE RELOCATED

#### GENERAL RCP NOTES

- CONTRACTOR TO CENTER ALL CEILING MOUNTED ITEMS (i.e., RECESSED LIGHT FIXTURES, SMOKE DETECTORS, FIRE SUPPRESSION HEADS) WITHIN THE ASSOCIATED CEILING TILE AS SHOWN. COORDINATE FINAL LOCATION WITH THE APPROPRIATE MECHANICAL, ELECTRICAL, FIRE ALARM, AND FIRE SUPPRESSION DRAWINGS AS REQUIRED.
- CONTRACTOR SHALL VERIFY IN FIELD IF DESIGNATED CEILING HEIGHTS IN ROOMS AREA, POSSIBLE, IF NOT, MAXIMIZE CEILING HEIGHTS AND NOTIFY ARCHITECT, ENGINEER OR PROJECT MANAGER OF ANY DISCREPANCY.
- SPRINKLER HEADS SHOWN FOR REFERENCE ONLY. DESIGN-BUILD FIRE PROTECTION CONTRACTOR SHALL BE RESPONSIBLE FOR FINAL LOCATIONS, QUANTITY, TYPE AND FULL FIRE PROTECTION DESIGN. FIRE PROTECTION SYSTEM SHALL BE IN ACCORDANCE WITH ALL APPLICABLE LOCAL, STATE AND FEDERAL CODES AND BUILDING STANDARDS INCLUDING NFPA 101 LIFE SAFETY CODE (SPECIFICALLY CHAPTER 20).
- CONTRACTOR SHALL PROVIDE ACOUSTIC SOUND BATT INSULATION ABOVE THE ENTIRE CEILING IN THE FOLLOWING ROOMS (TYPICAL UNO): TOILET ROOMS, OFFICES, RECEPTION AREAS, EXAM ROOMS AND CONFERENCE ROOMS.
- CONTRACTOR TO PROVIDE DENS ARMOR PLUS WALL BOARD (MOISTURE RESISTANT) IN ALL CEILING AREAS AND WALLS OF TOILET ROOMS AND VESTIBULES (TYPICAL UNO).
- ACCESS PANELS TO BE INDEPENDENTLY MOUNTED. DO NOT SUPPORT ON CEILING TILE GRID ASSEMBLY. SUPPORT FROM STRUCTURE ABOVE ONLY. COORDINATE SIZE, QUANTITY AND LOCATIONS WITH ARCHITECTURAL AND MECHANICAL DRAWINGS. IF NOT SHOWN, CONTRACTOR TO PROVIDE WHERE REQUIRED AND COORDINATE FINAL LOCATIONS IN FIELD WHERE REQUIRED PER MEP EQUIPMENT AND DRAWINGS.
- PROVIDE EXTERIOR MOUNTED EMERGENCY EGRESS LIGHT AT ALL EXTERIOR EXITS AS REQUIRED BY CODE, BATTERY BACK-UP AND MOUNTED 36" ABOVE DOOR UNO.
- SOFFITS ABOVE UPPER CABINETS SHALL BE 16" DEEP AND SHALL BE CONSTRUCTED OF 5/8" GYPSUM BOARD ON 3 5/8" METAL FRAMING AT 16" OC (TYPICAL UNO).
- REFER TO WALL TYPES FOR WALLS THAT PENETRATE CEILINGS.
- REFER TO MECHANICAL HVAC PLANS FOR DIFFUSER / GRILLE SIZES.
- FOR LIGHT FIXTURE TYPES SEE ELECTRICAL LIGHTING PLANS.
- REFER TO DIMENSIONS ON REFLECTED CEILING PLAN TO LOCATE / LAYOUT CEILING GRID AND LIGHT FIXTURES.

#### GENERAL PLAN NOTES

- THIS DRAWING IS DIAGRAMMATIC AND SHOULD BE USED TO DETERMINE THE DESIGN INTENT. THE CONTRACTOR IS RESPONSIBLE FOR THE COMPLETE SET OF WORK AS INDICATED AND SHALL FIELD VERIFY ALL WORK. COORDINATE ALL DRAWINGS / NEW WORK AND SHALL NOTIFY ARCHITECT IMMEDIATELY OF ANY DISCREPANCIES IN THE DOCUMENTS BEFORE PROCEEDING. FAILURE TO DO SO WILL RESULT IN THE CONTRACTOR TAKING FULL RESPONSIBILITY AND LIABILITY FOR SAID DISCREPANCIES.
- ALL DIMENSIONS ARE SHOWN FROM FINISH FACE TO FINISH FACE OF PARTITION UNLESS OTHERWISE NOTED.
- WALL THICKNESS ARE NOMINAL NOT ACTUAL DIMENSIONS. SEE WALL SCHEDULE FOR ACTUAL DIMENSIONS.
- ALL WOOD, INCLUDING BLOCKING, USED ON THE PROJECT SHALL BE FIRE RETARDANT TREATED.
- ALL WORK SHALL BE DONE IN ACCORDANCE WITH ALL LOCAL, STATE, COUNTY CODE REGULATIONS, O.S.H.A., AND THE AMERICAN WITH DISABILITIES ACT (ADA). REFER TO THE CODE PLAN FOR MORE INFORMATION.
- PROVIDE POSITIVE SLOPE TO ALL FLOOR DRAINS WHILE KEEPING FLOOR LEVEL AT WALL BASE CONDITION.
- PROVIDE TRANSITION STRIPS AT EACH CHANGE IN FLOOR FINISH MATERIALS.
- PAINT, PATCH AND REPAIR THE FOLLOWING TO MATCH EXISTING MATERIALS: FLOOR, WALL, AND CEILING SURFACES AS REQUIRED ADJACENT TO AREAS BEING DEMOLISHED. REFER TO DEMOLITION DRAWINGS FOR MORE INFORMATION.
- REINFORCE WALL AND PROVIDE BLOCKING AS REQUIRED TO SUPPORT WALL CABINETS AND COUNTERTOPS.
- THE CONTRACTOR SHALL PROVIDE AND INSTALL WALL REINFORCING FOR INSTALLATION OF ACCESSORIES, COAT RACKS, CHART RACKS, CASEWORK, AND OTHER WALL MOUNTED ITEMS.
- CLEAN AND REPAIR ALL EXISTING FLOOR FINISHES AS NECESSARY.
- ALL EXPOSED PIPES, DUCTS, AND CONDUIT TO BE PAINTED TO MATCH EXISTING.
- PROVIDE CONTROL JOINTS IN GYPSUM BOARD PARTITIONS AT 30'-0" O.C. MAXIMUM AND AS INDICATED IN THE CONTRACT DOCUMENTS.
- COORDINATE WITH OWNER'S EQUIPMENT SUPPLIER FOR INSTALLATION REQUIREMENTS / LOCATIONS OF FLOOR / WALL / CEILING MOUNTED ITEMS; IE. CAMERAS, TV'S, SPEAKERS, SENSORS, SECURITY WIRING, VAULTS, ATMS.
- CONTRACTOR SHALL CONDUCT A ROUGH ELECTRICAL INSPECTION WITH OWNER, PRIOR TO ENCLOSING WALLS, FOR THE PURPOSE OF CONFIRMING ALL J-BOX LOCATIONS FOR POWER, DATA, VOICE, SWITCH, THERMOSTAT, ETC.
- CONTRACTOR TO FILL ANY AND ALL EQUIPMENT PENETRATIONS OR DEPRESSIONS INTO OR THROUGH THE EXISTING SLAB THAT WILL NOT BE UTILIZED TO FEED NEW EQUIPMENT (I.E. ABANDONED FLOOR CORES, IMPRESSION FROM PREVIOUS EQUIPMENT FLOOR PLATE REMOVAL). PENETRATIONS SHALL BE FILLED WITH NON-SHRINK GROUT. THE SIDES OF ANY EXISTING OPENINGS SHALL BE MODIFIED/TAPERED SO THAT THEY ARE WIDER AT THE TOP THAN AT THE BOTTOM. FOR LARGE OPENINGS, PROVIDE ONE (1) #5 BAR 2" UP FROM BOTTOM OF HOLE.
- A TACTILE SIGN STATING 'EXIT' AND COMPLYING WITH ICC-A117.1 SHALL BE PROVIDED ADJACENT TO EACH DOOR TO AN AREA OF REFUGE, AN EXTERIOR AREA FOR ASSISTED RESCUE, AN EXIT STAIRWAY, AN EXIT RAMP, AN EXIT PASSAGEWAY, AND THE EXIT DISCHARGE.
- PROVIDE PERMANENT MIN 3-INCH HIGH CONTRASTING COLOR MARKING AND IDENTIFICATION AT ALL FIRE WALLS, FIRE BARRIERS, FIRE PARTITIONS, SMOKE BARRIERS, SMOKE PARTITIONS OR ANY OTHER WALL REQUIRED TO HAVE PROTECTED OPENINGS OR PENETRATIONS WITHIN 15 FEET AT THE END OF EACH WALL, AND NOT EXCEEDING 30 FEET MAXIMUM HORIZONTAL INTERVALS. MINIMUM 2 LOCATIONS EACH WALL. TYPICAL FOR ACCESSIBLE CONCEALED FLOOR, FLOOR-CEILING, OR ATTIC SPACES PER CODE (MBC 703.7)
- CONTRACTOR TO COORDINATE WITH FURNITURE VENDOR ON FURNITURE SPECIFICATIONS, LAYOUT, AND INSTALL.

RCP KEYNOTE LEGEND	
KEYNOTE	KEYNOTE DESCRIPTION
A	EXISTING CEILING SYSTEM. SUPPORT STRUCTURE AND LIGHTS TO REMAIN. COORDINATE NEW MECHANICAL DIFFUSER AND RETURN GRILLS AS INDICATED ON MECHANICAL DOCUMENTS.
B	NEW ACOUSTIC CEILING GRID TO BE INSTALLED, TYP.
C	MODIFY EXISTING CEILING SYSTEM AS REQUIRED FOR NEW PARTITION.
D	NEW 2X4 LIGHTS TO BE INSTALLED, TYP.
E	NEW 6" DOWN LIGHTS TO BE INSTALLED, TYP.
F	NEW CEILING MOUNTED EXIT SIGNS TO BE INSTALLED.
G	NEW 8'-0" SOFFIT TO BE INSTALLED.

NEW CONSTRUCTION KEYNOTE LEGEND	
KEYNOTE	KEYNOTE DESCRIPTION
002	NEW 2HR FIRE CURTAIN - BOD: OVERHEAD DOOR COMPANY FIREKING 634 STRUCTURAL SUPPORT MAY BE REQUIRED.
003	OWNER TO INSTALL SECURITY HARDWARE (CARD ACCESS). CONTRACTOR RESPONSIBLE FOR CONDUIT AND JUNCTION BOX INSTALLATION. FIELD VERIFY IF DOOR NEEDS TO BE MODIFIED FOR SECURITY HARDWARE INSTALLATION.
004	OWNER TO PROVIDE 175 SF OF CARPETING IN LOUNGE. COORDINATE WITH OWNER ON LOCATION OF EXISTING CARPET. CONTRACTOR RESPONSIBLE FOR ORDERING DIFFERENCE IN QUANTITY AND INSTALLATION OF NEW CARPET.
005	PARTITION WALL AND EGRESS DOOR TO BE INSTALLED BETWEEN VESTIBULE AND OFFICE AREA.
006	NEW (1) DUPLEX POWER AND (1) DATA IN WALL PER DESK AND COPIER TO BE INSTALLED BY CONTRACTOR. SEE ELECTRICAL FOR FURTHER INFORMATION.
008	NEW LOCATION OF TV SALAGED FROM RECEPTION.
009	NEW TV MOUNTED TO WALL. POWER AND DATA TO BE INSTALLED BEHIND.
010	CARPET TO BE INSTALLED OVER EXISTING QUARRY TILE. SKIM UNDERLAYMENT TO PROVIDE MINIMAL SLOPE TO ADDRESS TRANSITION HEIGHT DIFFERENCE.
011	QUARRY TILE TO REMAIN IN VESTIBULE 121.9. PROVIDE TRANSITION STRIP AT INTERIOR DOORS TO ADJACENT CARPET.

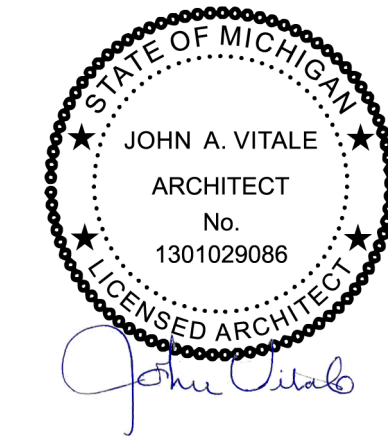


STUCKY VITALE ARCHITECTS  
27172 WOODWARD AVENUE  
ROYAL OAK, MI 48067-0925  
P. 248.546.6700  
F. 248.546.8454  
WWW.STUCKYVITALE.COM

STATEMENT OF INTELLECTUAL PROPERTY:  
THE IDEAS, CONCEPTS, DRAWINGS AND THOUGHTS CONVEYED HEREIN ARE THE INTELLECTUAL PROPERTY OF STUCKY VITALE ARCHITECTS. THIS SET OF DRAWINGS, IN WHOLE OR IN PART, MAY NOT BE REPRODUCED, WITHOUT THE WRITTEN CONSENT OF STUCKY VITALE ARCHITECTS. THIS INFORMATION IS PROTECTED UNDER U.S. COPYRIGHT LAW. ALL RIGHTS RESERVED.

Consultants

Seal:

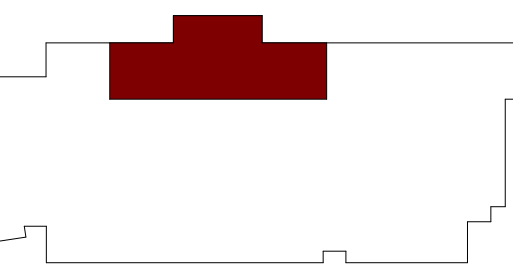
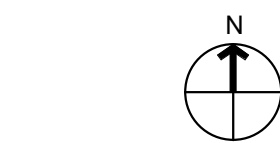


Project:

MATTHAEI ACADEMIC  
RESOURCE CENTER  
RENOVATION

5101 John C Lodge Fwy,  
Detroit, MI 48202

Key Plan:



Issued for

BID / PERMIT 07.07.22  
BULLETIN #1 08.24.22  
BFS RESPONSE 08.29.22

Drawn by:

ARR

Checked by:

ARR

Sheet Title:

FIRST LEVEL NEW  
CONSTRUCTION AND RCP

Project No.:

2022.038

Sheet No.:

A110



LIST OF MATERIALS																
06410 - ARCHITECTURAL CASEWORK				09650 - RESILIENT FLOORING				09910 - PAINT								
PL-1	PLASTIC LAMINATE MANUFACTURER: WILSONART MODEL: STANDARD HPL PRODUCT #: 15504 COLOR: CHARCOAL VELVET FINISH: TRACELESS FINISH LOCATION: REFER TO FINISH PLAN FOR EXACT LOCATION CONTACT:			CT-1	CARPET MANUFACTURER: MATCH EXISTING COLOR: STEEL MATCH EXISTING LOCATION: LOUNGE		PT-1	INTERIOR FIELD PAINT MANUFACTURER: SHERWIN WILLIAMS COLOR: REPOSE GRAY FINISH: EGG-SHELL LOCATION: REFER TO FINISH PLAN FOR EXACT LOCATION								
					RB-1			15000 - ELECTRICAL								
09510 - SUSPENDED ACOUSTICAL CEILING																
ACT-1	ACOUSTIC CEILING TILE MANUFACTURER: ARMSTRONG COLLECTION: ULTIMA COLOR: WHITE SIZE: 2 X 2 EDGE: SQUARE LAY IN EDGE GRID PROFILE: KEEP EXISTING (WARREN) LOCATION: SEE RCP FOR MORE DETAIL NOTE: WHEN EXISTING GRID IS PRESENT, MATCH WHEN POSSIBLE															

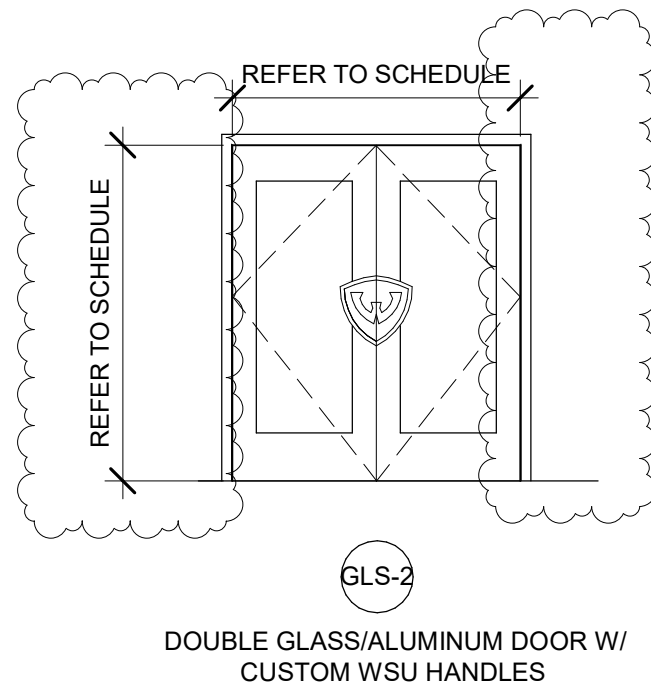
**DOOR HARDWARE GENERAL NOTES:**

- Hardware Set 1 – Push Pull Set [Always Unlocked] + Closer Stop**  
(Requires min. 4" stiles, 6" top rail and 10" bottom rail)

- Hardware Set 2** – Rim Panic w/ Pull Trim [Lock / Unlock] + Closer Stop  
(Requires min. 4" stiles, 6" top rail and 10" bottom rail)

- 
- 0' - 5"
- REFER TO CEILING PLAN  
ALIGN BULKHEAD WITH FIRE CURTAIN HOUSING
- NEW 2HR FIRE CURTAIN -  
BOD: OVERHEAD DOOR  
COMPANY FIREKING 634.  
COORDINATE TIE-IN WITH  
EXISTING FACILITY FIRE  
ALARM SYSTEM.  
COORDINATE WITH OWNER  
FACILITY MANAGEMENT  
GROUP.
- EXISTING MASONRY PARTITION.  
PROVIDE STRUCTURAL  
SUPPORT HEADER AS  
REQUIRED FOR NEW OPENING.  
VERIFY REQUIREMENTS WITH  
ARCHITECT UPON EXPOSURE  
OF EXISTING PARTITION  
CONSTRUCTION.
- VERIFY OPENING REQUIREMENTS WITH MANUFACTURER
- Level 1  
0' - 0"

NUMBER	ROOM NAME	DOOR SIZE		HDWE SET	DOOR				THRESHOLD TYPE	FRAME			FIRE RATING	DETAILS		REMARKS
		WIDTH	HEIGHT		TYPE	MATERIAL	FINISH	GLASS		MATERIAL	FINISH	GLASS		HEAD	JAMB	
Level 1																
107.2	LOUNGE	6' - 0"	7' - 0"	1	GLS-2	ALUM	PFN	GL-2	PER MNF.	ALUM	PFN	-	20	6/A610	7/A610	COORDINATE CUSTOM DOOR HANDLE DESIGN WITH OWNER. PROVIDE FIRE RATED CERAMIC GLASS AS REQUIRED FOR 20MIN. RATING.
121.9	VESTIBULE	3' - 0"	7' - 0"	2	GLS-1	ALUM	PFN	GL-1	PER MNF.	ALUM	PFN	GL-	NA	6/A610	7/A610	



4 BULKH  
A610 1 1/2" = 1'-0"

3 FIRE C  
A610 1 1/2" = 1'-0"

2 BASE  
A610  $1\frac{1}{2}'' = 1'-0''$

1 LOUN  
A610 1/2" = 1'-0"



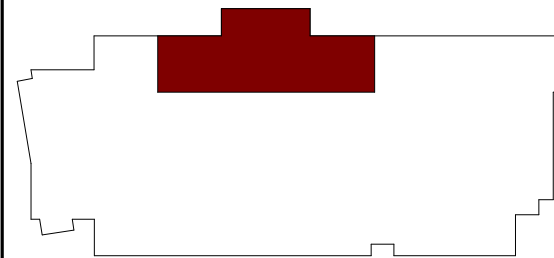
## Consultants

Seal:



5101 John C Lodge Fwy,  
Detroit, MI 48202

Key Plan:



Issued for

BID / PERMIT	07.07.22
BFS RESPONSE	08.29.22

Drawn by :

Author

Checked by :

## Checke

Sheet Title :

INTERIOR ELEVATIONS AND  
ENLARGED PLANS FIRST  
LEVEL

Project No. :

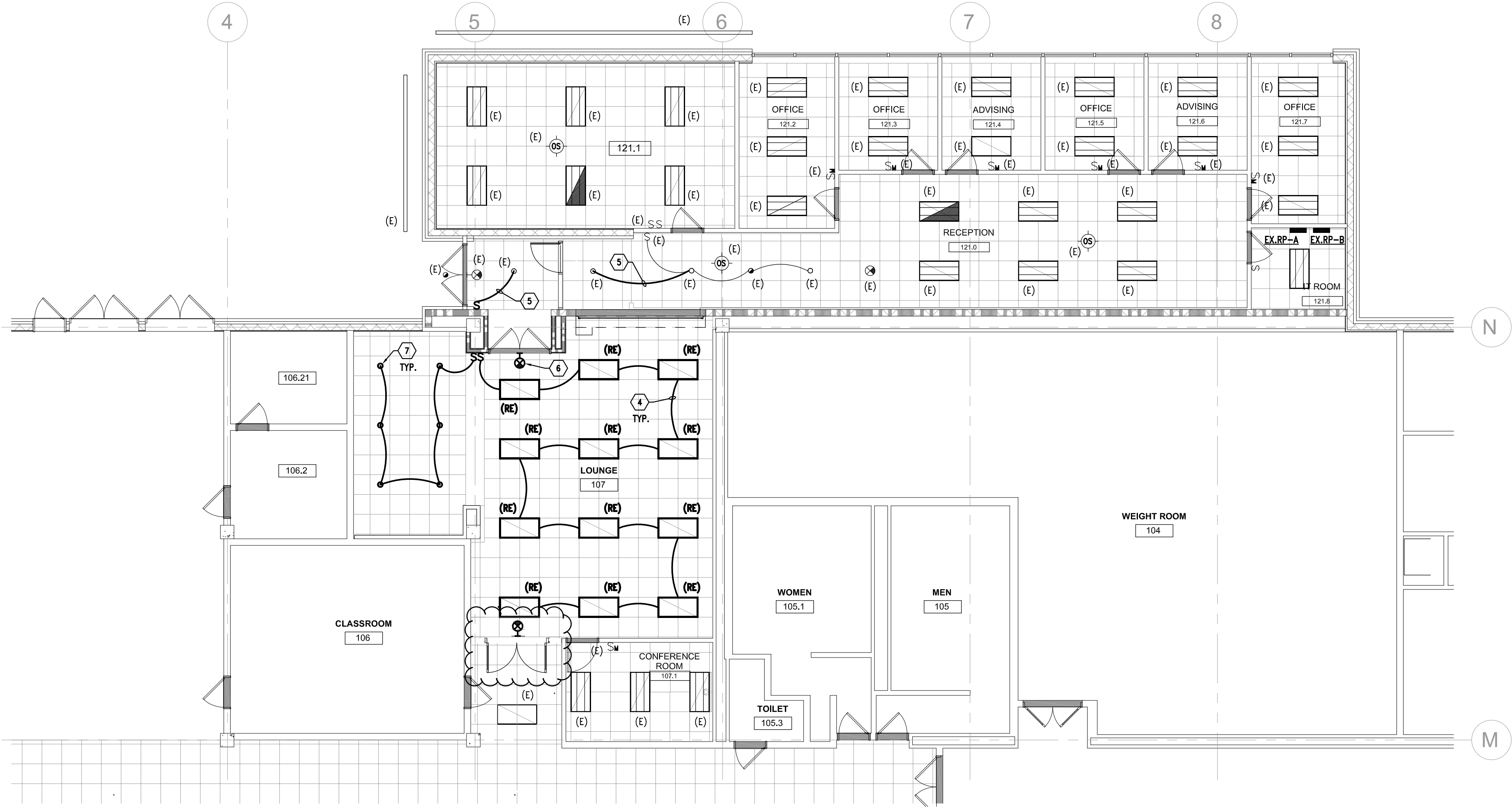
2022.038

Sheet No. :

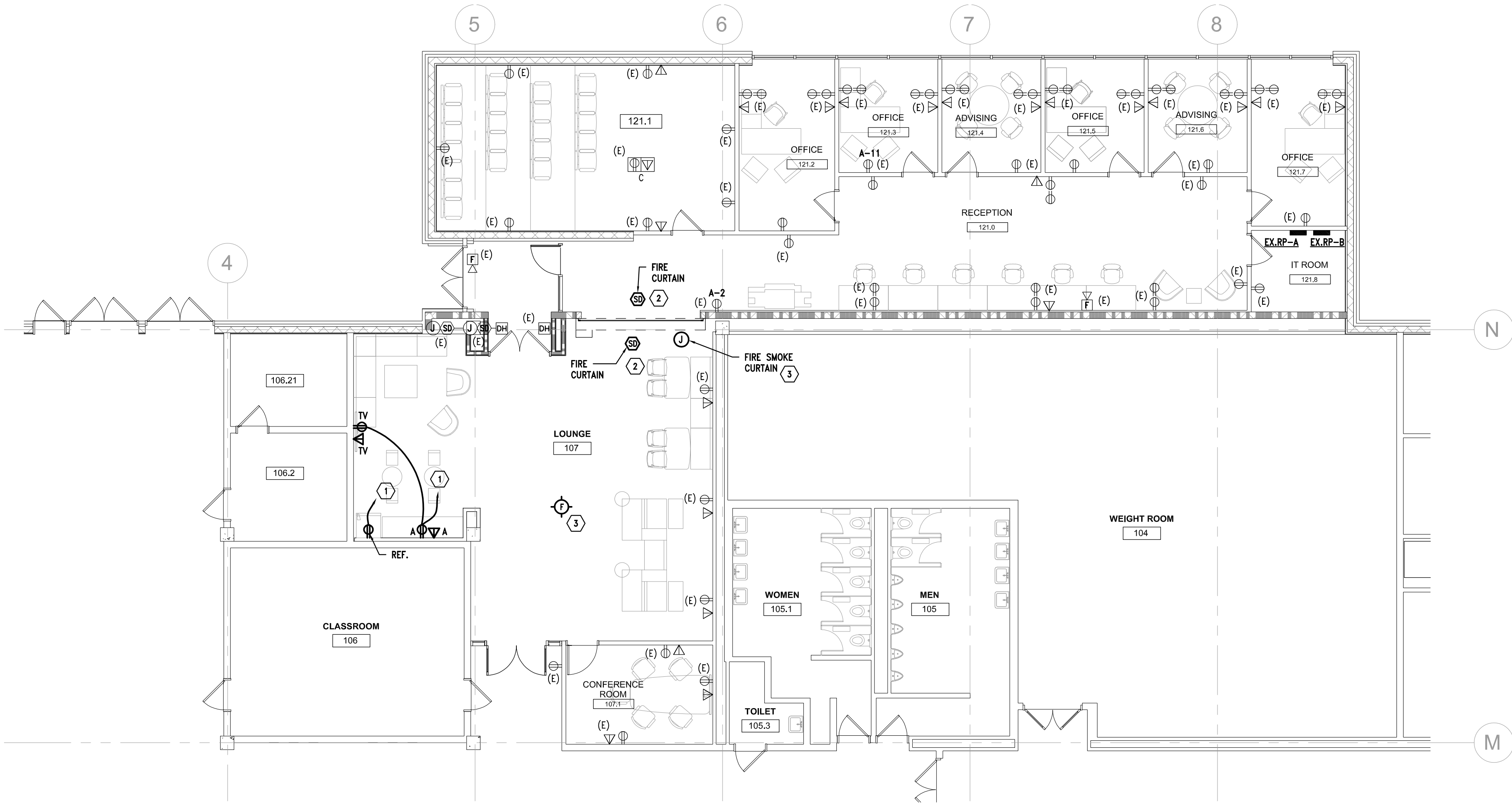
A610

DO NOT SCALE DRAWINGS





2 LIGHTING PLAN  
1/8" = 1'-0"



1 POWER PLAN  
1/8" = 1'-0"

KEY NOTES :

- 1 PROVIDE SEPARATE 20A-120V-1P CIRCUIT FROM NEAREST AVAILABLE PANEL. VERIFY PANEL LOCATION.
- 2 CONNECT TO BUILDING FIRE ALARM SYSTEM PER BUILDING FIRE ALARM SYSTEM VENDOR'S DIRECTION.
- 3 FIRE CURTAIN, PROVIDE SEPARATE (1)20A-120V-1P LIFE SAFETY CIRCUIT FROM NEAREST AVAILABLE SOURCE. VERIFY SOURCE LOCATION IN FIELD.
- 4 CONNECT TO EXISTING LIGHTING CIRCUIT.
- 5 REWORK SWITCHING AS INDICATED.
- 6 PROVIDE EXIT LIGHT FIXTURE TO MATCH EXISTING-VERIFY INFIELD. CONNECT TO NEAREST AVAILABLE LIFE SAFETY LIGHTING CIRCUIT.
- 7 RECESSED 6" DIAMETER LED DOWNLIGHT WITH LENS, 2000 LUMENS, 3500°K, 80CRI, 0-10V DIMMING, MULTI-VOLT DRIVER. GOTHAM EVO-6 OR APPROVED EQUAL.



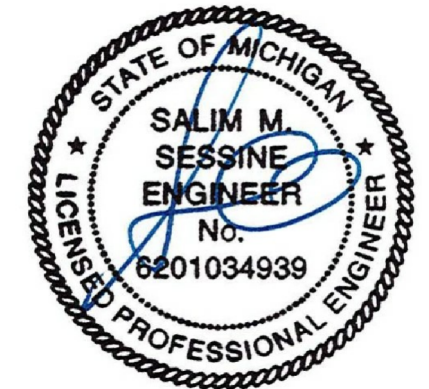
STUCKY VITALE ARCHITECTS  
27172 WOODWARD AVENUE  
ROYAL OAK, MI 48067-0925  
P. 248.546.6700  
F. 248.546.8454  
WWW.STUCKYVITALE.COM

STATEMENT OF INTELLECTUAL PROPERTY:  
THE IDEAS, CONCEPTS, DRAWINGS AND THOUGHTS CONVEYED HEREIN ARE THE INTELLECTUAL PROPERTY OF STUCKY VITALE ARCHITECTS. THIS SET OF DRAWINGS, IN WHOLE OR IN PART, MAY NOT BE REPRODUCED, WITHOUT THE WRITTEN CONSENT OF STUCKY VITALE ARCHITECTS. THIS INFORMATION IS PROTECTED UNDER U.S. COPYRIGHT LAW, ALL RIGHTS RESERVED.

Consultants



Seal:

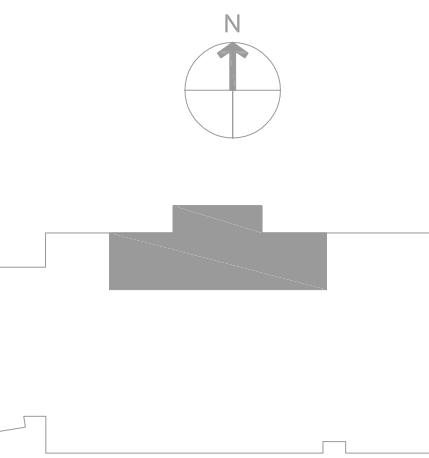


Project :

MATTHAEI ACADEMIC  
RESOURCE CENTER  
RENOVATION

5101 John C Lodge Fwy,  
Detroit, MI 48202

Key Plan:



Issued for

BID / PERMIT 07.07.22  
BFS RESPONSE 08.29.22

Drawn by :

SM

Checked by :

MJM

Sheet Title :

ELECTRICAL PLANS

Project No. :

2022.038

Sheet No. :

E100